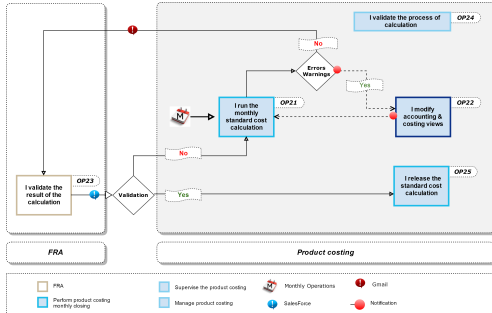


I release the standard cost calculation

Process: **Product Costing**

Responsibility area: **Perform product costing monthly closing**

The costing should be marked and the release scheduled after validation of the FRA on D-1 - 12pm




Guideline


The FRA must send by D-1 - 12pm its validation

Check Point

After completing the first 4 steps, the plant controller should analyze if the standard prices are correct and correct eventual errors. The next steps "Marking" and "Release" are only performed after plant controller approval. Before the marking, the first 4 steps can always be executed as much times as needed and must be repeated after controllers corrections to confirm that the errors were solved.


! You can go to the step "Marking" when you receive the approval of the FRA

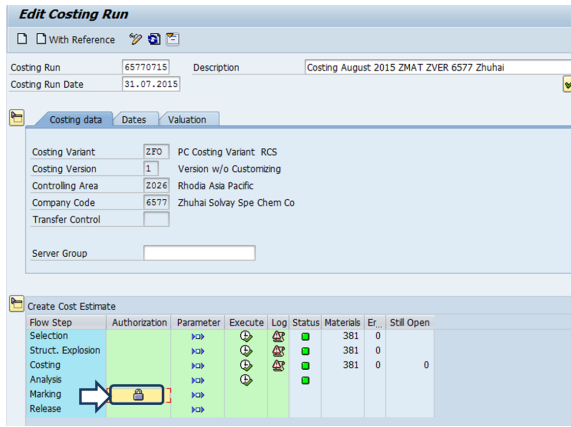
All error  & warning

messages  are cleared (in some cases it is not possible to clear warning messages but at least a deep analysis must be performed)

Flow Step	Authorization	Parameter	Execute	Log	Status	Materials	Er.	Still Open
Selection						381	0	
Struct. Explosion						381	0	
Costing						381	0	0
Analysis								
Marking								
Release								

STEP 1

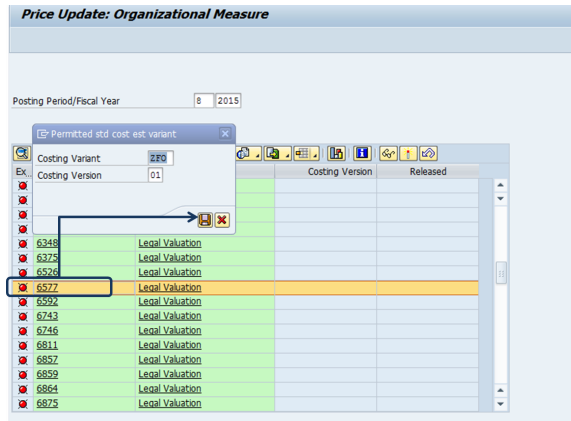
Click on the icon  column « Authorization » / line « Marking » to unlock the padlock.





STEP 2

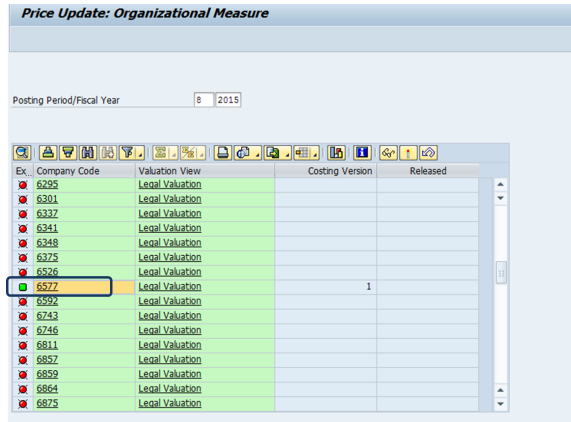
All the company appear: when there is a green square, the padlock is open, if the square is red, the padlock is closed.

Click on the company code you want to open and save 




There is a green square  the costing in the company 6577 can be marked & released


Go back by clicking 

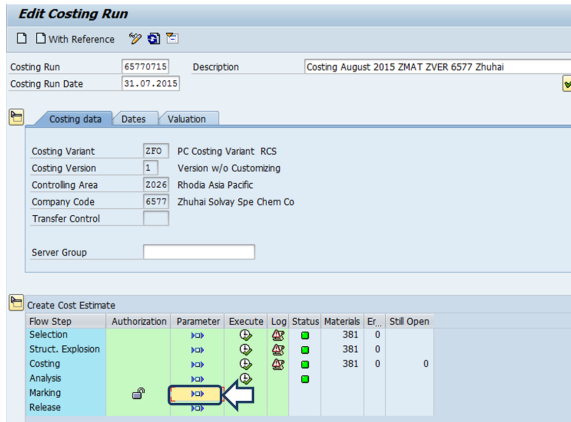


STEP 3

The padlock is open 



The cycle can continue with the marking.

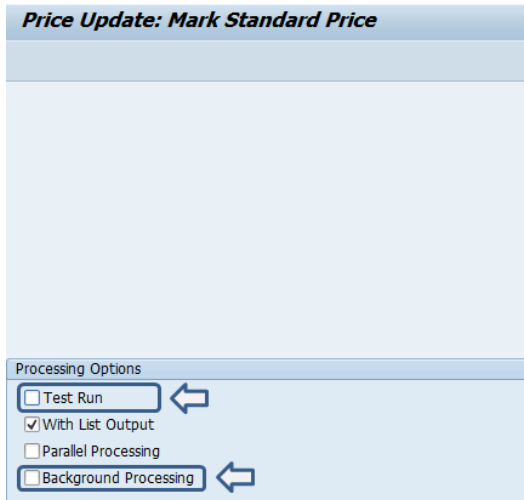
Click on the icon  of column **Parameter** on the line **Marking**.





STEP 4

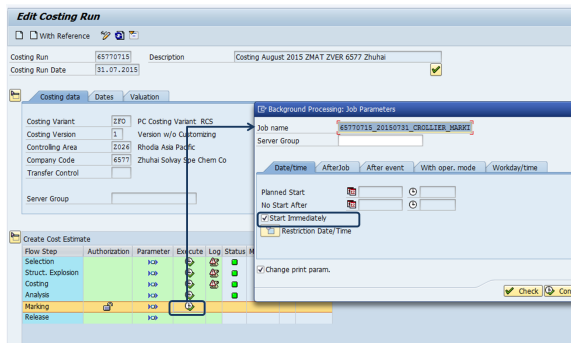
1. Uncheck the test mode.
2. Uncheck "Background Processing"


Save  and go back by clicking 

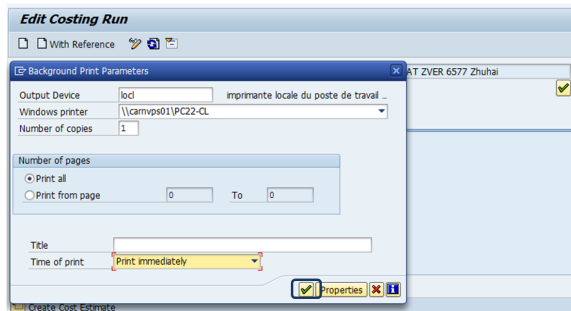


STEP 5


1. Click on  in the column **Execute** / line **Marking**
2. Check Start Immediately
3. Click on  **Confirm**



The screen "Background Print Parameters" appear, click on 



STEP 6

 **After the Marking step is finished, all the materials should be valued.**

Flow Step	Authorization	Parameter	Execute	Log	Status	Materials	Er.	Still Open
Selection			<input type="checkbox"/>			7007	0	
Struct. Explosion			<input type="checkbox"/>			7007	0	
Costing			<input type="checkbox"/>			7007	0	0
Analysis			<input type="checkbox"/>					
Marking			<input checked="" type="checkbox"/>			7006	0	1
Release			<input type="checkbox"/>					

We should not have materials "still open".

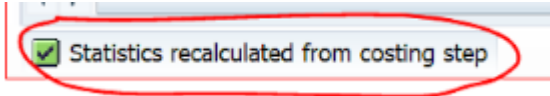
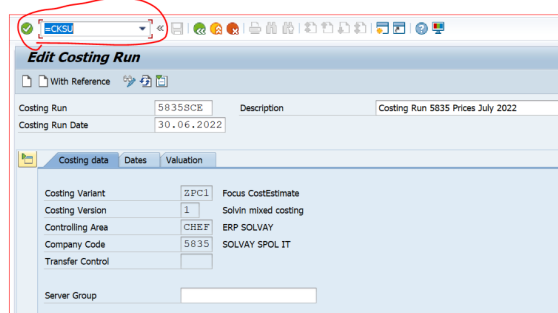
Still Open" Materials?

1. Go to CK40N (Edit mode), of the respective Costing run 5835SCE & Date

2. Enter the =CKSU in T-CODE command bar

3. Press enter.

Then, this message will appear and the error will be resolved.




NOTE:

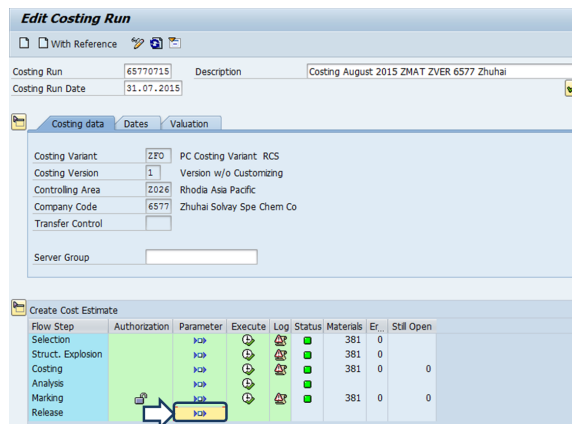
If you have errors, you must identify them by checking the "Log".

The errors should be checked and rectified if possible in the current month. To avoid the same to happen on the next costing run.

STEP 1



The cycle continues with the

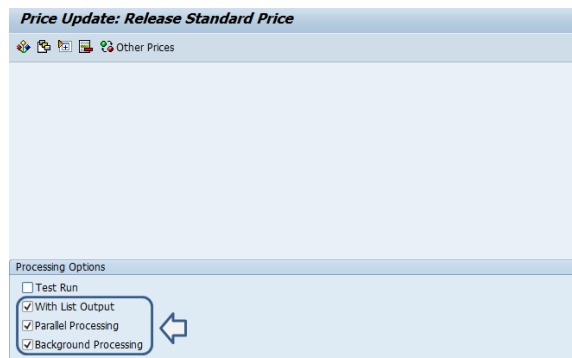
validation. Click on the icon  in the column **Parameter** / line **Release**




STEP 2

1. Uncheck the test mode.
2. Check "with list output"
3. Check "Background Processing"
4. Check Parallel Processing

Save  and go back by clicking 



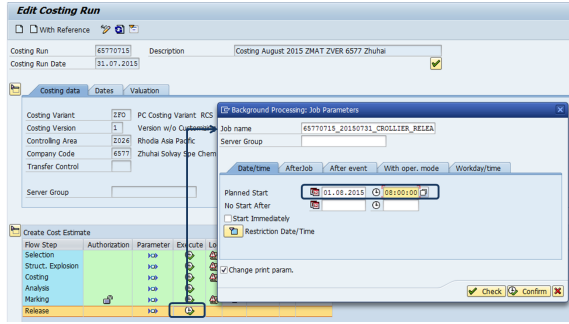
STEP 3

1. Click on  in the column **Execute** / line **Rel**

ease"

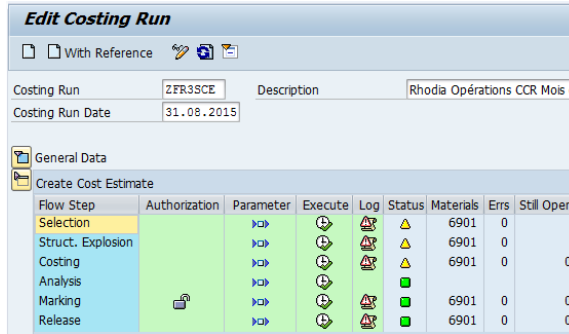
2. Enter the starting date and time

The costing is planned to be released the **1st day of the month during the night**. The time depends on the company code.



STEP 4


- Check at D1 if the job run:
 - In **SM37**;
 - And inside of **CK40N** in Log.

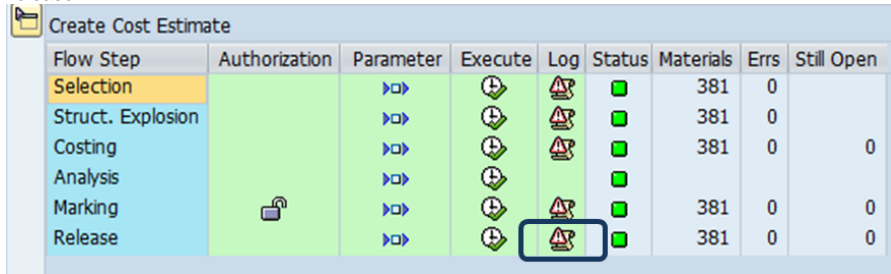


On D1, the first thing to do is to check that the costing run was released during the night

STEP 1

Open the costing run using the message in the CK40N

Click on  in the column « Log » / line « Release »



STEP 2

Check that all cost estimates were updated successfully.

