

OP.054

I update a statistical key figures (quantities)

Process: [Costing Model Architecture](#)

Responsibility area: [Maintain cycles](#)

Scope

Frequency

References

- [OP.054](#)
- [OP.054](#)

Attachments

N/A

xx << I update a statistical key figures (quantities) >> xx

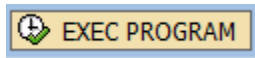
Guideline

I receive a request to update a statistical key figures (quantities)
In PF2

STEP 1

Enter transaction **Z1K_ACTUAL** in the transaction field of main menu.

Click on the line **Z1K_ULKB21** and then in EXEC PROGRAM



CO MENU for EXCEL FILE upload

INFO for PROGRAM | EXEC PROGRAM | Download Example

Menu of the program to UPLOAD ACTUAL postings

```
XXXX XX XXXXX X X XXXX X
X X X   X X X X X
XXXX X   X X X XXXX X
X X XXX X XXXX X X XXXX
```

Click on a line to select the program and choose a function (icon on top of page):

- INFO to display the program documentation
- EXEC to run the program
- Download to download an example of the EXCEL file
a window asks you for a file name and creates an excel file on your PC then you can open the file to see the example

Z1K_ULKB21	Upload Activity Type posting on Ctr/WBS/Order/Network
Z1K_ULKB21_DE	Upload Activity Type posting on Ctr/WBS/Order/Operation/Network
Z1K_UPLOAD_RATIOS	Upload ACTUAL Statistical Ratio Postings (KB31)
Z1K_ULKB11	Upload ACTUAL Reposting (KB11)
Z1K_ULKB11_ORDER	Upload ACTUAL Reposting (KB11) SENDER=ORDER

STEP 2

Enter a document date and define the following fields:

- **Test Run:** X - test mod (the file is check but no Batch Input or Postings are generated) / (space) – Real mode.

- **File name:** To enter the location (in order to search please execute to access the search screen).;

- **BTCI Name:** Batch Input Name reference: ZBKB21_CCCode;

- **Online:** E - Direct Posting in SAP (allowing only the display of errors); / (space) – Creates Batch-Input session

- **Controlling Area:** CHEF;

- **Screen VARIANT:** SAP09;



Press Execute

UPLOAD Activity type postings from excel (KB21)

TESTRUN

X' --> Test run (Check input file but NO POSTINGS)

File name

BTCI Name

ONLINE

* SPACE --> Create Batch-Input session
* E --> Direct POSTING; Display ERRORS only

Controlling Area

Screen variant

Note

No document date/Posting Date is requested in the screen as the information is retrieved by the txt file contents (first column of the template).

Upload file

After execution a message box requiring the upload file will be displayed.

STEP 3

The program generates a batch input session for transaction KB21N.

Go to transaction SM35;

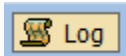
Select the session and process it;

Note

In case of more complex files (containing more data and line to be processed) the system might generate more than one Batch Input session for the same upload

Document posted

In the BTCI session processed, it's possible to find the document number of the posting done. Mark the line and see Log



Batch Input: Log Overview

Display Analyze session

Log information

Session QueueID: 09101412023526161504 Sess.name: ZBKB21_0001
Created on: 14.10.2009 Created by: PT400083

Log Overview

Date	Time	Sess.name	Session status	User	Queue ID	Appl.server
14.10.2009	12.07.20	ZBKB21_0001	Processed	PT400083	09101412023526161504	sflsapr3

Batch Input Log for Session ZBKB21_0001

Choose

Log attributes

Name: ZBKB21_0001 Queue ID: 09101412023526161507 User: PT400083
Created on: 14.10.2009 TemSe ID: BDCL6362616150795607 Details

Time	Message	Transact.	Index
12:14:05	Session ZBKB21_0001 is being processed by user PT400083 in mode...		0
12:14:08	Document is posted under number: 511823761	KB21	1
12:14:11	Transaction was processed successfully	KB21	1
12:14:11	Processing statistics		0
12:14:11	1 transactions read		0
12:14:11	1 transactions processed		0
12:14:11	0 transactions with errors		0
12:14:11	0 transactions deleted		0
12:14:11	Batch input processing ended		0

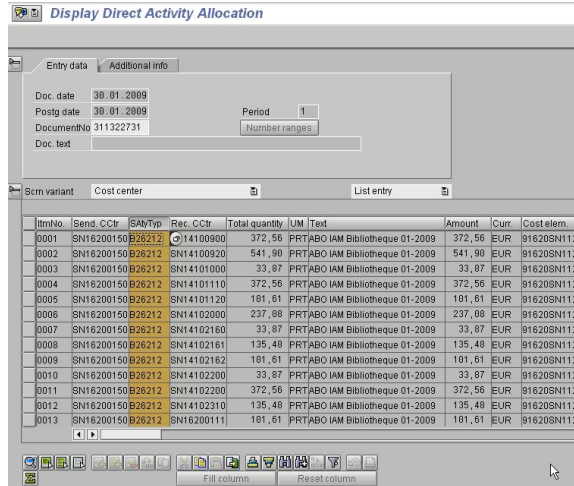
STEP 4

Run transaction KB21N and enter the document number previously collected;



Note

You can also check CO objects receivers using report ZACT running transaction GR55.



Workflow history

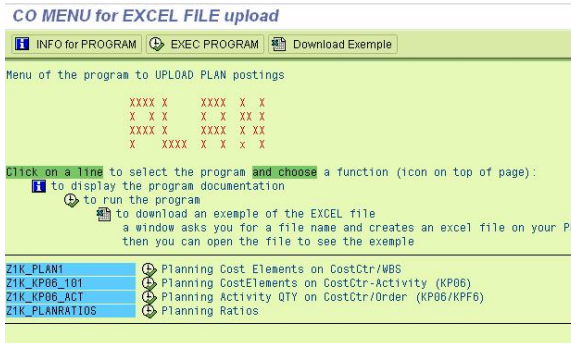
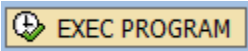
This view shows the 5 most recent entries. The complete workflow log is available from the 'Document Activity' menu item.

Sept 11, 2025	Actor	Type	Activity	Version
Published	CHANSRI, Surachet	Edit	updated the page at 3:53 pm	
Jun 13, 2016	Sylvain Michel Alexandre Pingont	State	changed state to Published at 2:02 pm (Space Initialization)	v2
Draft	Sylvain Michel Alexandre Pingont	State	gave <i>Approvers</i> approval at 2:02 pm	
		State	changed state to Draft at 2:02 pm	v2
Mar 22, 2016	ROLLIER, Charlotte	Edit	updated the page at 3:20 pm	
		Edit	created the page at 3:05 pm	

STEP 1

Enter transaction Z1K_PLANNING in the transaction field of main menu.

Then click on line Z1K_PLANRATIOS and EXEC PROGRAM



STEP 2

To process the upload you must fill all the required fields:

Controlling area - CHEF

Fiscal Year – “The year that you want to upload the Budget Figures”

Period From – Starting period

To period – Ending period

Plan parameters - C0-01 (Cost accounting - general)

Version – 0 (Plan/Act – Version)

You must flag **Replace** if you want to proceed with the upload of new figures or add values if you sum them to the existing one



Afterwards continue with accessing the next screen

! Upload file

After execution a message box requiring the upload file will be displayed.

i Troubleshooting

While uploading the file if you retrieve the error "*Record not Uploaded*" go to TXT file and replace the commas by points

I notify the requester

CO UPLOAD PLAN Statistical RATIOS

File NAME

Controlling area

Fiscal year

Period from

To period

Plan parameters

Version

Currency

REPLACE

ADD Values

STORNO

CO UPLOAD PLAN Statistical RATIOS

CO UPLOAD PLAN Statistical RATIOS

Upload fichier OK

Nombre de records : 153

Comma instead of point	record NOT uploaded	2010Z2HCT08M131000009,00	9,00
Comma instead of point	record NOT uploaded	2010Z2HCT08M162000002,00	2,00
Comma instead of point	record NOT uploaded	2010Z2HCT08M162001002,00	2,00
Comma instead of point	record NOT uploaded	2010Z2HCT08M1620011012,00	12,00
Comma instead of point	record NOT uploaded	2010Z2HCT08M162001122,00	2,00
Comma instead of point	record NOT uploaded	2010Z2HCT08M162001202,00	2,00
Comma instead of point	record NOT uploaded	2010Z2HCT08M162002001,00	1,00
Comma instead of point	record NOT uploaded	2010Z2HCT08M1620110012,41	12,41
Comma instead of point	record NOT uploaded	2010Z2HCT08M162011504,00	4,00
Comma instead of point	record NOT uploaded	2010Z2HCT08M162020231,00	1,00
Comma instead of point	record NOT uploaded	2010Z2HCT08M162020918,42	8,42