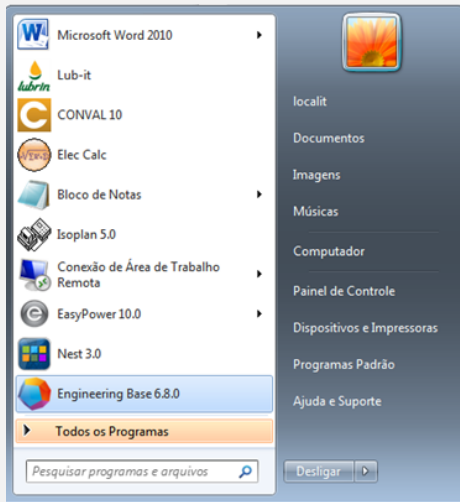


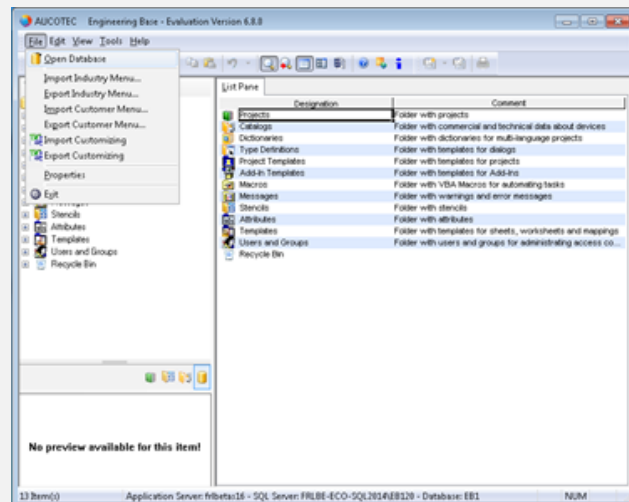
1. How to change Database Server

1. How to change Database Server

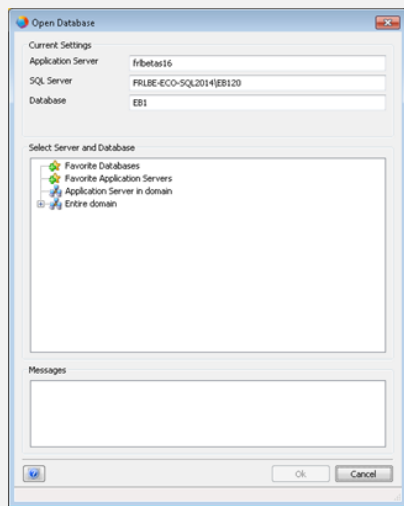
In order to configure Engineering Base to connect to the definite Database Server instead of the Test Server, follow through these instructions:



- From the Start Menu, open “**Engineering Base 6.8.0**”.



- Click “**File > Open Database**”.

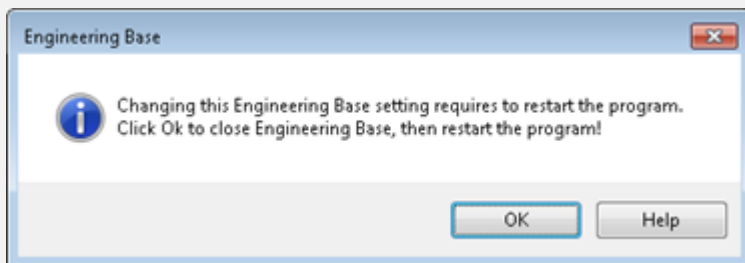


- Change the Settings on the form according to the following:

Application Server: #####

SQL Server: #####

Database: #####



- Click "OK".
- Close the program and then open it again. It should now connect to the definite server.