

CK40N - Calculate the standard cost estimate

i The monthly calculation of the cost estimate starts with four steps. Run every month since D-6 until D-2 or D-1 depends of each company. In order to continue for the other steps we need the approval from all controllers.

STEP 1

The date of the first day of the cycle appears. To avoid any problems, calculation must remain until 31.12.9999.

The cycle starts with the selection of the materials that are costed. Click on



in the column « Parameter » / line « Selection »

STEP 2

A new screen appears

1. Click on beside Material Type
2. Enter the Material type :
 - ZMAT : Finished product & RM & SF
 - ZVER : Packaging

and execute


STEP 3

In the same screen update the plants:

1. Click on beside Plant
2. In tab Exclude single values
3. Add the plants from SQ00 in tab excludes

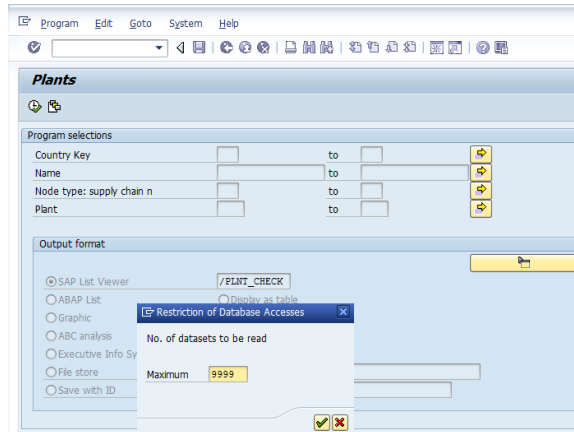
STEP 4

To remove Trading Plants (Négoce /NDIR) from WP1 Costing Run the following selections must be performed:

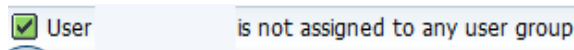
1. Go to **SQ00**, user group "**Costing**", choose the Query "**PLANTS**" and execute 
2. In case you get an error message saying that your User is not assigned to any User Group, go to Environment -> Work areas and choose Standard area. After go to Edit -> Other User Group -> Costing.
3. Select Layout **/PLNT_CHECK** and confirm for your scope if Plants listed are excluded from **CK40N** parameters.

Conclusion : The Plants should be included/added to the already existing exclude list in CK40N (do not delete the Plants already in the List).

1



2



3

Plnt	Name 1	Rg	Region (State, Provi)	Cty	Nty	House number and street
7375	ZFR3 / Négoce BE			BE		
7330	ZFR3 / Négoce DE			DE	DC	
8107	ZFR3 / Négoce ES			ES		
7329	ZFR3 / Négoce FR	93	SEINE-ST-DENIS	FR	DC	
7360	ZFR3 / Négoce GB			GB	DC	
7390	ZFR3 / Négoce Hors UE			Q1	DC	
7353	ZFR3 / Négoce IT	MI	MILANO	IT	DC	VIA MILANO 78/80
7331	ZFR3 / Négoce NL			NL	DC	
7380	ZFR3 / Négoce UE			EU	DC	

STEP 5

Check Background Processing

and save

Unknown Attachment

The message "Values of variant xxxx" appears

Go back by clicking

Costing Run: Selection - Change Parameters

Variant Attributes

Selection Using Material Master

Material Number to

Low-Level Code to

Material Type ZMAT to

Plant to

Selection Using Reference Costing Run

Costing Run

Costing Run Date

Selection Using Selection List

Selection List

Select Configured Mats Only

Always Recost Material

Processing Opts

Background Processing

Print Log

Values of variant 65770715735811 saved

STEP 6

1. Click on in the column « Execute » / line « Selection »
2. Check Start Immediately
3. Click on

Unknown Attachment

Edit Costing Run

With Reference

Costing Run Description

Costing Run Date

Costing data Dates Valuation

Costing Variant PC Costing Variant RCS

Costing Version Version w/o Customizing

Controlling Area Rhoda Asia Pacific

Company Code Zhuhai Solvay Spe Chem Co

Transfer Control

Server Group

Create Cost Estimate

Flow Step Authorization Parameter Execute Log Status Materials Er Still Open

Selection

Struct. Explosion

Costing

Analysis

Marking

Release

Background Processing Job Parameters

Job name

Server Group

Date/time AfterJob After event With oper. mode Workday/time

Planned Start

No Start After

Start Immediately

Restriction Date/Time

Change print param.

Check Confirm

STEP 1

The cycle continues by the determination of quantities. Click on

the icon of column **Parameter** on the line **Struct explosion**.

Edit Costing Run

With Reference

Costing Run Description

Costing Run Date

Costing data Dates Valuation

Costing Variant PC Costing Variant RCS

Costing Version Version w/o Customizing

Controlling Area Rhoda Asia Pacific

Company Code Zhuhai Solvay Spe Chem Co

Transfer Control

Server Group

Create Cost Estimate

Flow Step Authorization Parameter Execute Log Status Materials Er Still Open

Selection

Struct. Explosion

Costing

Analysis

Marking

Release

STEP 2

A new screen appears

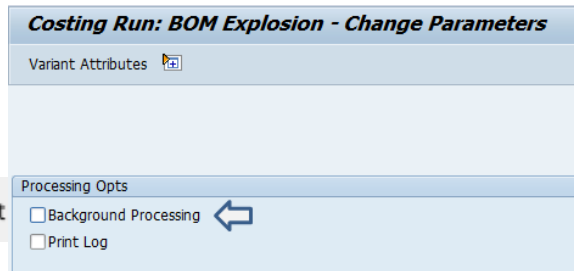
- Uncheck **Background processing** and save

? Unknown Attachment

A message appears : "values of variant xxxx saved"

- Go back by clicking

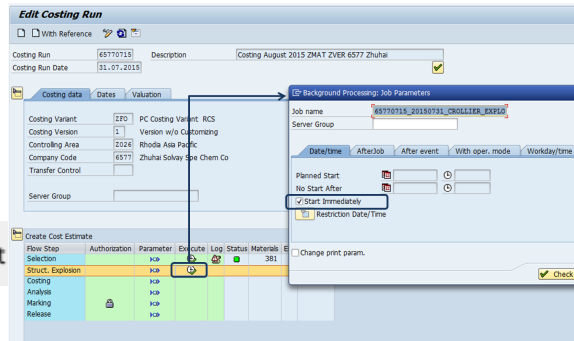
? Unknown Attachment



STEP 3

1. Click on  in the column **Execute** / line **Struct explosion**
2. Check **Start Immediately**
3. Click on

? Unknown Attachment



STEP 4

Click on

? Unknown Attachment

until the job is finished: the icon

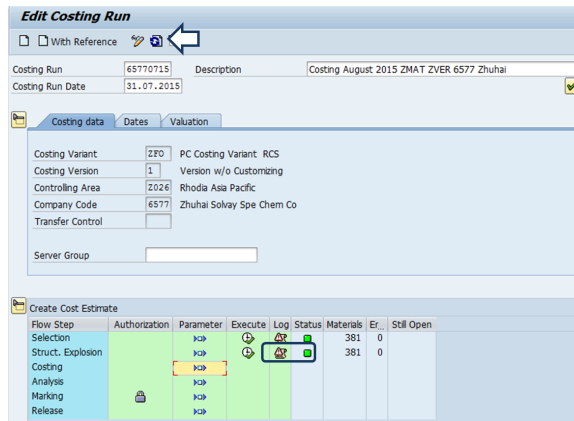
? Unknown Attachment

appears in the column log with a status



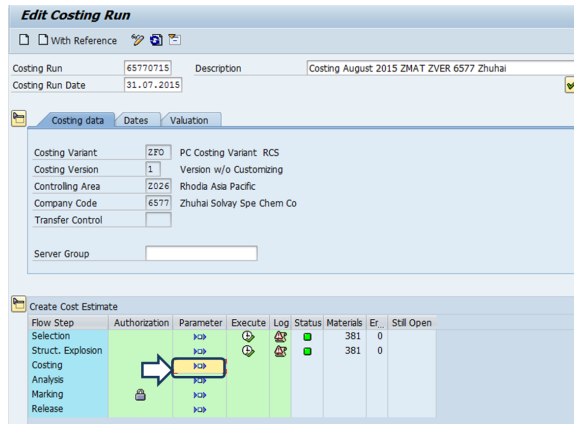
? Unknown Attachment

or



STEP 1

The cycle continues by the costing. Click on the icon of column **Parameter** on the line **Costing**.



STEP 2

A new screen appears

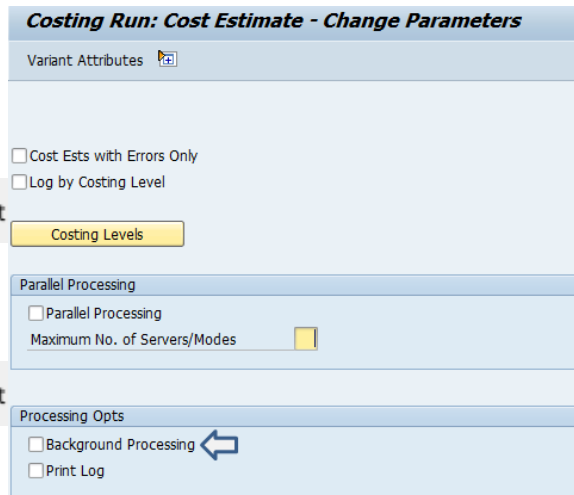
- Uncheck **Background processing** and save

? Unknown Attachment


A message appears : "values of variant xxxx saved"

- Go back by clicking

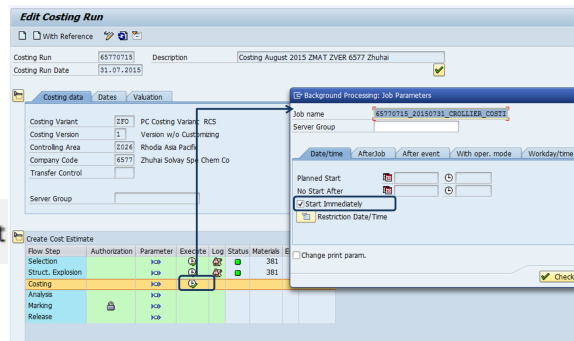
? Unknown Attachment



STEP 3

1. Click on  in the column **Execute** / line **Costing**
2. Check **Start Immediately**
3. Click on

? Unknown Attachment



STEP 4

1. Click on

? Unknown Attachment

until the job is finished: the icon

? Unknown Attachment

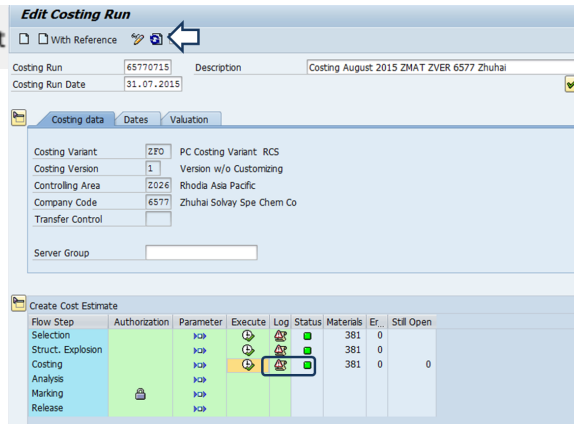
appears in the column log

with a status 

? Unknown Attachment




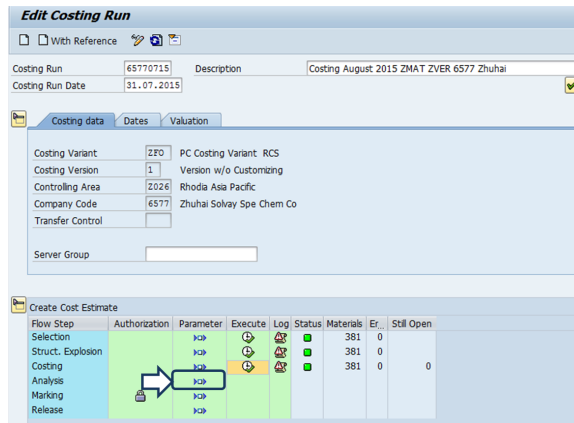
OR



STEP 1

The cycle continues with the analysis of the calculation:

Click on the icon  of column **Parameter** / line **Analysis**

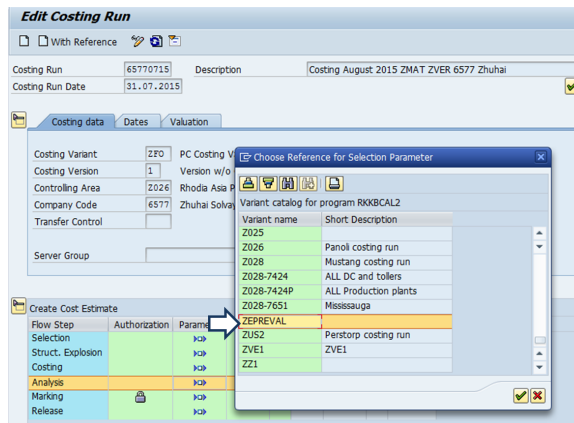


STEP 2

A new screen appears

Select your variant according to your company.

- Select the variant "ZEPREVAL" for example.



STEP 3

A new screen appears

1. Enter the currency = 1 (currency of the company)
2. Layout: **SAP03** (It has to be created previously by the user)

Save

? Unknown Attachment

A message appears : "values of variant xxxx saved"

- Go back by clicking

Unknown Attachment

STEP 4

Click on in the column **Execute / line Analysis**

STEP 5

The report is displayed with the list of material codes & plants

- $A = F / D =$ Variation in %
- $B = C \times F =$ Anticipated revaluation
- $C =$ Total stock (quantity)
- $D =$ Standard costing M
- $E =$ Standard costing M+1
- $F = E - D =$ Costing variation

The report must be saved in excel by

clicking on

STEP 6

Check **Spreadsheet**

Enter the folder & the file name and

Generate

