
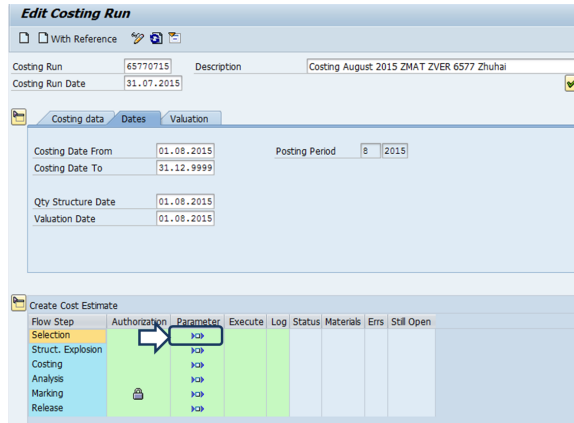


Costing Run - 1-Selection

STEP 1


The date of the first day of the cycle appears. To avoid any problems, calculation must remain until 31.12.9999.


The cycle starts with the selection of the materials that are costed. Click on  in the column « Parameter » / line « Selection »

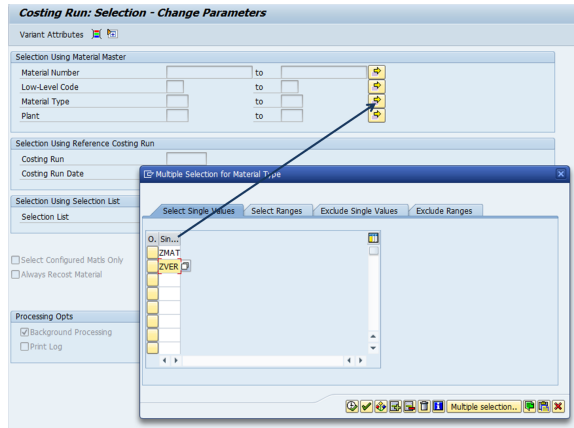


STEP 2

A new screen appears


1. Click on  beside Material Type
2. Enter the Material type :
 - **ZMAT** : Finished product & RM & SF
 - **ZVER** : Packaging

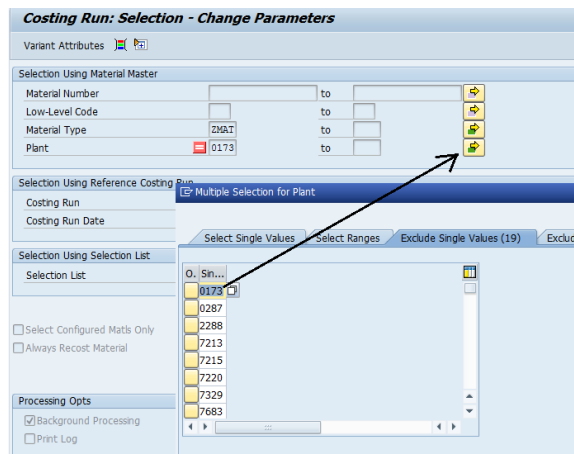
and execute 



STEP 3


In the same screen update the plants:

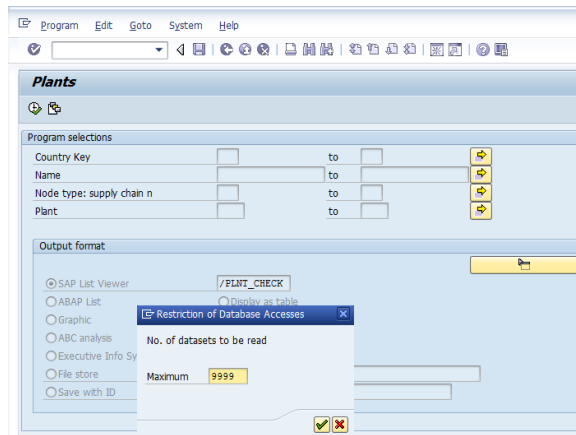
1. Click on  beside Plant
2. In tab Exclude single values
3. Add the plants from **SQ00** in tab excludes



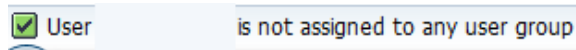
STEP 4

To remove Trading Plants (Négoce /NDIR) from WP1 Costing Run the following selections must be performed:

1. Go to **SQ00**, user group "**Costing**", choose the Query "**PLAN TS**" and execute 
2. In case you get an error message saying that your User is not assigned to any User Group, go to Environment -> Work areas and choose Standard area. After go to Edit -> Other User Group -> Costing.
3. Select Layout **/PLNT_CHECK** and confirm for your scope if Plants listed are excluded from **CK40N** parameters.



2



Conclusion: The Plants should be included/added to the already existing exclude list in CK40N (do not delete the Plants already in the List).

3

