
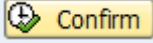
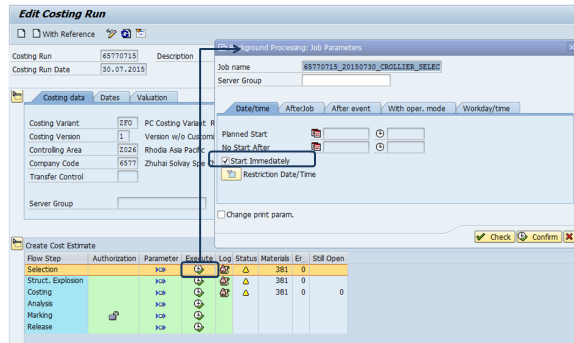


# CK40N - Recalculate the standard cost estimates


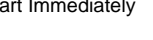
If corrective actions have been taken, the costing run must be re executed

## STEP 1

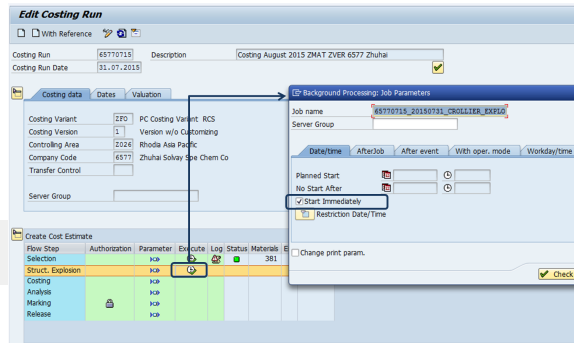
1. Click on  in the column « Execute » / line « Selection »
2. Check Start Immediately
3. Click on 





## STEP 2

1. Click on  in the column « Execute » / line « Struct explosion »
2. Check Start Immediately
3. Click on 

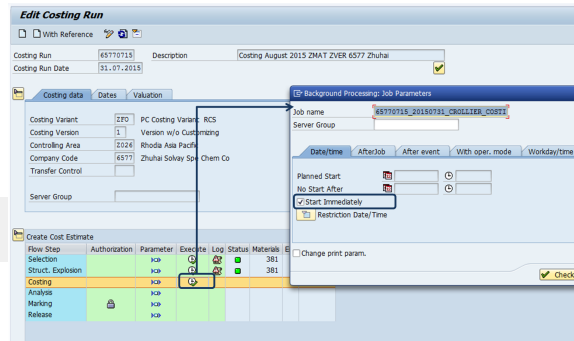
? Unknown Attachment




## STEP 3

1. Click on  in the column « Execute » / line « Costing »
2. Check Start Immediately
3. Click on 

? Unknown Attachment



## STEP 4

Click on  in the column « Execute » / line « Analysis »

