





Costing Run - 5-Marking

 You can go to the step "Marking" when you receive the approval of the FRA

All error  & warning  messages are cleared (in some cases it is not possible to clear warning messages but at least a deep analysis must be performed)

| Flow Step | Authorization | Parameter | Execute | Log | Status | Materials | Er. | Still Open |
|-------------------|---------------|-----------|---------|-----|--------|-----------|-----|------------|
| Selection | | | | | | 381 | 0 | |
| Struct. Explosion | | | | | | 381 | 0 | |
| Costing | | | | | | 381 | 0 | 0 |
| Analysis | | | | | | | | |
| Marking | | | | | | | | |
| Release | | | | | | | | |

STEP 1

Click on the icon  column « Authorization » / line « Marking » to unlock the padlock.

Edit Costing Run

With Reference

Costing Run: 65770715 Description: Costing August 2015 ZMAT ZVER 6577 Zhuhai
 Costing Run Date: 31.07.2015

Costing data | Dates | Valuation

Costing Variant: 2F0 PC Costing Variant: RCS
 Costing Version: 1 Version w/o Customizing
 Controlling Area: 2026 Rhodia Asia Pacific
 Company Code: 6577 Zhuhai Solvay Spe Chem Co
 Transfer Control:
 Server Group:

| Flow Step | Authorization | Parameter | Execute | Log | Status | Materials | Er. | Still Open |
|-------------------|---------------|-----------|---------|-----|--------|-----------|-----|------------|
| Selection | | | | | | 381 | 0 | |
| Struct. Explosion | | | | | | 381 | 0 | |
| Costing | | | | | | 381 | 0 | 0 |
| Analysis | | | | | | | | |
| Marking | | | | | | | | |
| Release | | | | | | | | |

STEP 2

All the company appear: when there is a green square, the padlock is open, if the square is red, the padlock is closed.


Click on the company code you want to open and save 

Price Update: Organizational Measure

Posting Period/Fiscal Year: 8 2015

Permitted std cost est variant

| Ex. | Costing Variant | Costing Version | Released |
|-----|-----------------|-----------------|----------|
| | 2F0 | 01 | |
| | 6348 | Legal Valuation | |
| | 6375 | Legal Valuation | |
| | 6526 | Legal Valuation | |
| | 6577 | Legal Valuation | |
| | 6592 | Legal Valuation | |
| | 6743 | Legal Valuation | |
| | 6746 | Legal Valuation | |
| | 6811 | Legal Valuation | |
| | 6857 | Legal Valuation | |
| | 6859 | Legal Valuation | |
| | 6864 | Legal Valuation | |
| | 6872 | Legal Valuation | |

There is a green square  the costing in the company 6577 can be marked & released


Go back by clicking 

Price Update: Organizational Measure

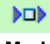
Posting Period/Fiscal Year: 2015

| Ex. | Company Code | Valuation View | Costing Version | Released |
|------|--------------|-----------------|-----------------|----------|
| 6295 | | Legal Valuation | | |
| 6301 | | Legal Valuation | | |
| 6337 | | Legal Valuation | | |
| 6341 | | Legal Valuation | | |
| 6348 | | Legal Valuation | | |
| 6375 | | Legal Valuation | | |
| 6526 | | Legal Valuation | | |
| 6577 | | Legal Valuation | 1 | |
| 6592 | | Legal Valuation | | |
| 6743 | | Legal Valuation | | |
| 6746 | | Legal Valuation | | |
| 6811 | | Legal Valuation | | |
| 6857 | | Legal Valuation | | |
| 6859 | | Legal Valuation | | |
| 6864 | | Legal Valuation | | |
| 6875 | | Legal Valuation | | |

STEP 3

The padlock is open 

The cycle can continue with the marking.

Click on the icon  of column **Parameter** on the line **Marking**.

Edit Costing Run

With Reference

Costing Run: 65770715 Description: Costing August 2015 ZMAT ZVER 6577 Zhuhai

Costing Run Date: 31.07.2015

Costing data | Dates | Valuation

Costing Variant: ZFO PC Costing Variant: RCS

Costing Version: 1 Version w/o Customizing

Controlling Area: 2026 Rhodia Asa Pacific

Company Code: 6577 Zhuhai Solvay Spe Chem Co

Transfer Control:



Server Group:

Create Cost Estimate

| Flow Step | Authorization | Parameter | Execute | Log | Status | Materials | Er | Still Open |
|-------------------|---------------|-----------|---------|-----|--------|-----------|----|------------|
| Selection | | | | | | 381 | 0 | |
| Struct. Explosion | | | | | | 381 | 0 | |
| Costing | | | | | | 381 | 0 | 0 |
| Analysis | | | | | | | | |
| Marking | | | | | | | | |
| Release | | | | | | | | |

STEP 4

1. Uncheck the test mode.
2. Uncheck **"Background Processing"**

Save  and go back by clicking 

Price Update: Mark Standard Price

Processing Options



Test Run

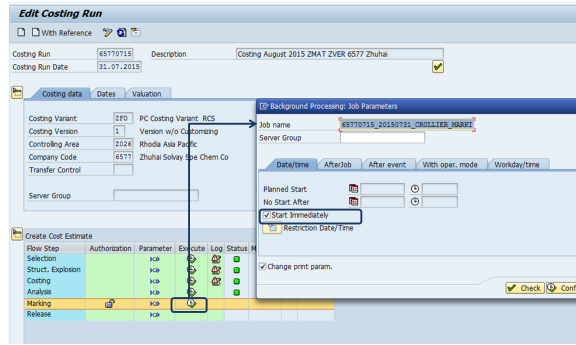
With List Output


Parallel Processing

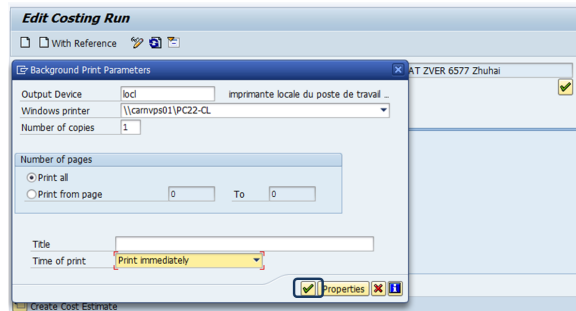
Background Processing

STEP 5


1. Click on  in the column **Execute** / line **Marking**
2. Check Start Immediately
3. Click on  **Confirm**



The screen "Background Print Parameters" appear, click on 



STEP 6

 After the Marking step is finished, all the materials should be valuated.

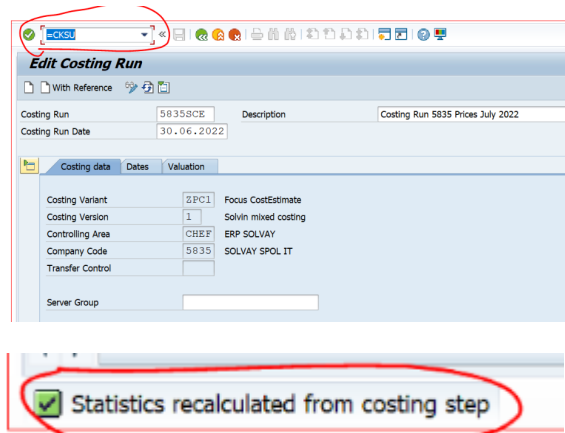
| Flow Step | Authorization | Parameter | Execute | Log | Status | Materials | Er. | Still Open |
|-------------------|---------------|-----------|--------------------------|-----|--------|-----------|-----|------------|
| Selection | | | <input type="checkbox"/> | | 7007 | 0 | | |
| Struct. Explosion | | | <input type="checkbox"/> | | 7007 | 0 | | |
| Costing | | | <input type="checkbox"/> | | 7007 | 0 | | |
| Analysis | | | <input type="checkbox"/> | | | | | |
| Marking | | | <input type="checkbox"/> | | 7006 | 0 | | 1 |
| Release | | | <input type="checkbox"/> | | | | | |

We should not have materials "still open".

Still Open" Materials?

1. Go to CK40N (Edit mode), of the respective Costing run 5835SCE & Date
2. Enter the =CKSU in T-CODE command bar
3. Press enter.

Then, this message will appear and the error will be resolved.



NOTE:

If you have errors, you must identify them by checking the "Log".

The errors should be checked and rectified if possible in the current month. To avoid the same to happen on the next costing run.