

# CK382 - Material does not exist in withdrawal plant



Material in plant is specially procured. The special procurement key points to withdrawal plant. However, material does not exist in this plant.

## Example

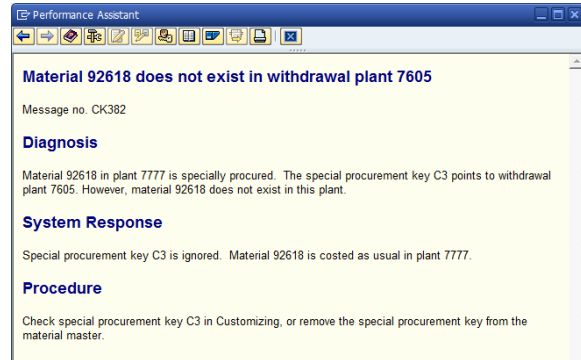
Material 92618 in plant 7777 is specially procured. The special procurement key C3 points to withdrawal plant 7605. However, material 92618 does not exist in this plant.

## Procedure



Check the special procurement key with MM03 and request its modification to the person who is maintaining the view MRP2

=> The message doe



### STEP 1

- Use transaction **MM03**
- Enter the material code and

Enter ↵

### Display Material (Initial Screen)

Select View(s) Org. Levels Data

Material 92618

### STEP 2

- Select the view **"MRP2"** and

Enter ↵

### Display Material (Initial Screen)

Select View(s) Select View(s)

View  
MRP 1  
MRP 2  
MRP 3  
MRP 4  
General Plant Data / Storage 1  
General Plant Data / Storage 2

View selection only on request

Org. Levels  Data  Default Setting

### STEP 3

- Enter the plant code and

Enter ↵

### Display Material (Initial Screen)

Select View(s) Org. Levels Data

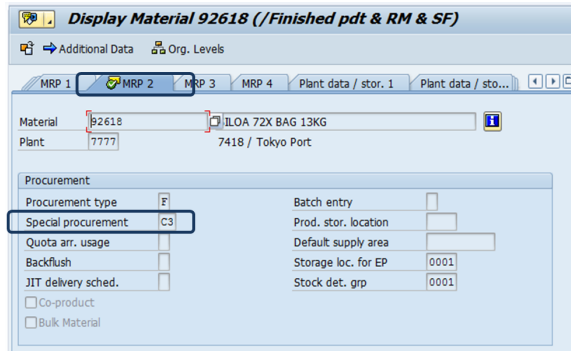
Organizational levels  
Plant 7777 ZFR3 St. Fons  
Stor. Location  
Valuation type

Org. levels/profiles only on request


Select View(s)  Default Setting

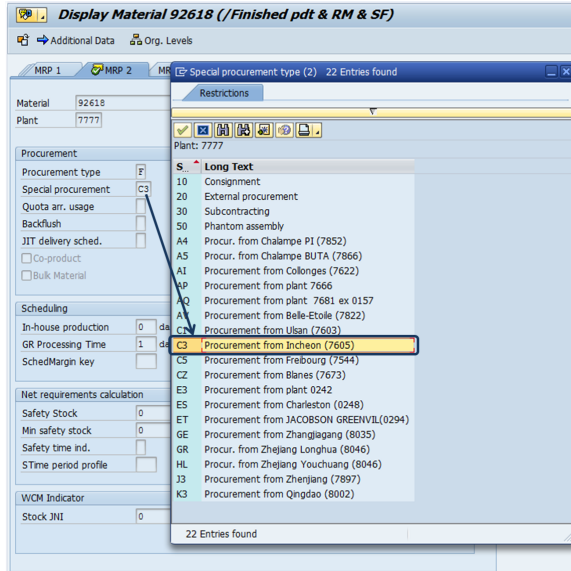
### STEP 4

- The special procurement code is **C3**





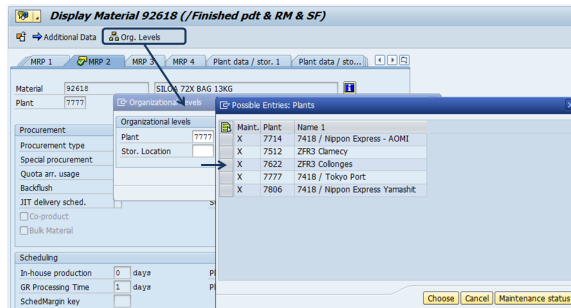
**STEP 5**

- Click on the code and  to have the description of the code
- The code **C3** means that the material 92618 comes from the plant **7605** Incheon



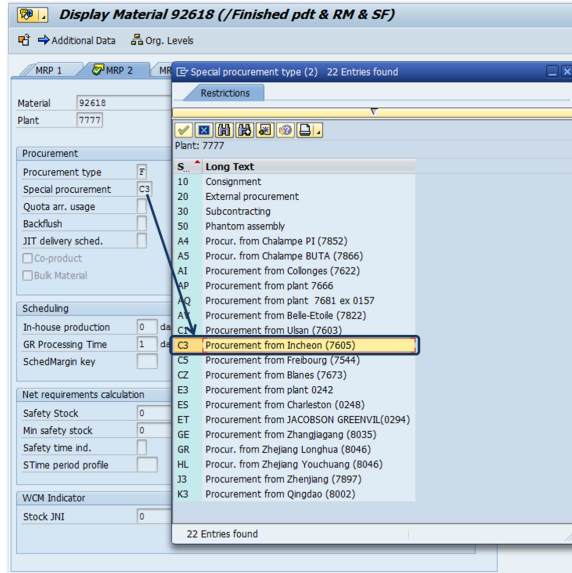
**STEP 1**

- Use transaction **MM03**
- Click  **Org. Levels** to display the organization level and click  beside the plant code
- The list of plants is displayed => The material code 92618 exists in 5 plants
- If the material 92618 is not produced in the plant 7777 is can be procured externally or in another plant in WP1 listed below :
  - 7512 ZFR3 Clamecy
  - 7622 ZFR3 Collonges
  - 7714 7418 / Nippon Express - AOMI
  - 7806 7418 / Nippon Express Yamashit



STEP 2

- The existing procurement code **C3** should be removed or replaced as it refers to a plant 7605 Incheon in which the material code 92618 was not created



A wrong procurement code does not prevent from releasing the costing. Nonetheless it should be updated in order to ensure the accuracy of the calculation of the integrated margin in BW