

# CK858 - No suitable or valid production version



The system established that, in the MRP view for material x in plant p, the quantity structure should be selected through the production versions.

When the material was costed, entries were made for the BOM and/or routing. However, the system could not determine either a suitable or a valid production version

## Example

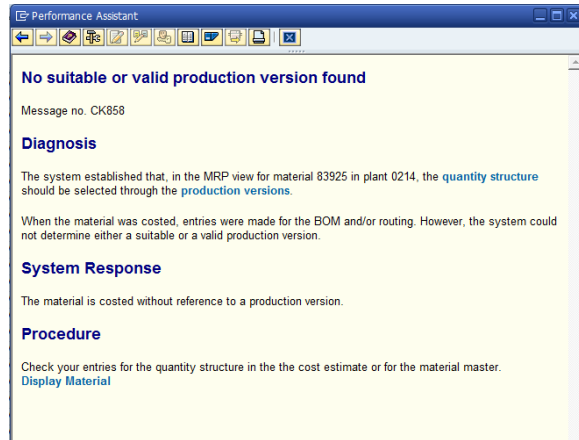
The system established that, in the MRP view for material 97861 in plant 7991, the quantity structure should be selected through the production versions

When the material was costed, entries were made for the BOM and/or routing. However, the system could not determine either a suitable or a valid production version

## Procedure



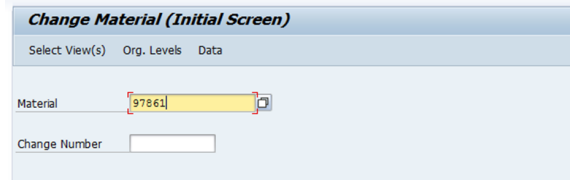
Enter a status Z1 in the view costing of the master data of the material code with transaction MM02 until the production version is created or updated



### STEP 1

- Use transaction **MM02**
- Enter the material code and

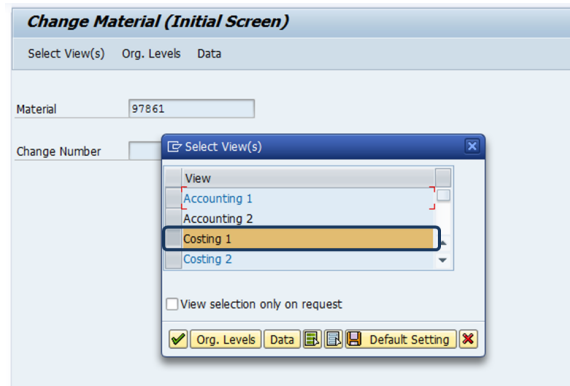
Enter ↵



### STEP 2

- Select the view "**Costing 1**" and

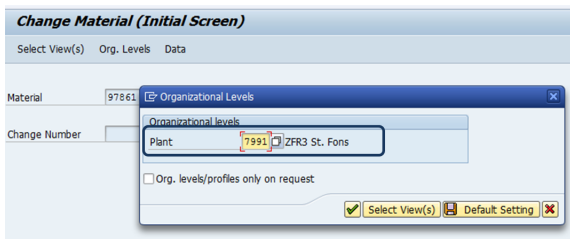
Enter ↵




### STEP 3


- Enter the plant code and

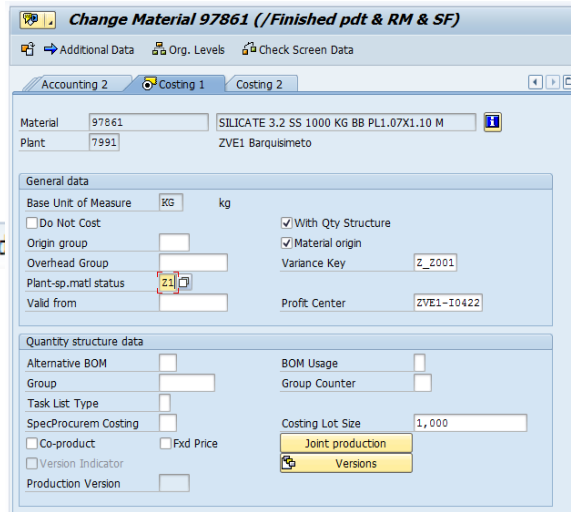
Enter ↵



STEP 4

- Enter the status **Z1** in the field Plant-sp.matl status and save 
- A message confirms the change

 Material 97861 changed



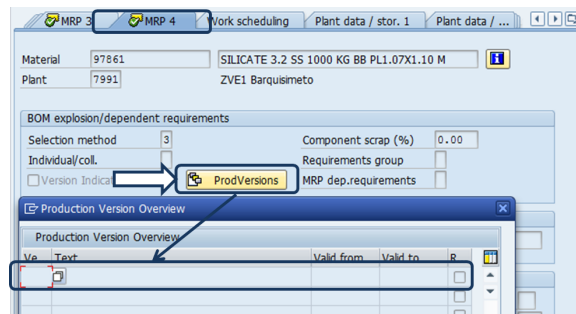
## Workflow history

This view shows the 5 most recent entries. The complete workflow log is available from the 'Document Activity' menu item.

Jun 13, 2016	Actor	Type	Activity	Version
Published	Sylvain Michel Alexandre Pingont	State	changed state to Published at 2:02 pm (Space Initialization)	v12
Draft	Sylvain Michel Alexandre Pingont	State	gave Approvers approval at 2:02 pm	
		State	changed state to Draft at 2:02 pm	v12
From Jul 24, 2015 to Feb 09, 2016				
	Alexandra Lepercq and ROLLIER, Charlotte	Edit	multiple updates from Alexandra Lepercq and R, Charlotte	ROLLIE
	ROLLIER, Charlotte	Edit	created the page at 7:28 pm	

### What happens if the issue is not solved and the costing released ?

- You can check if the material code has a production version in the material master data of the code 97861 in plant 7991 with the transaction MM03 in the view MRP4
- The field is blank; it confirms that the cost estimate cannot be calculated



- You can check the impact on the costing when there is no production version available

=> In this example the costing is not complete: there is only one a raw material but no activities. The costing is not correct.

Material: 97861 SILICATE 3.2 SS 1000 KG BB PL1.07X1.10 M  
 Plant: 7991

Costing Data | Dates | Qty Struct. | Valuation | History | Costs

BOM Data: BOM: 00063691, Usage: 1, Alternative: 1  
 Routing Data: Task List Type: , Group: , Group Counter:   
 Production Version:

Itemization for material 97861 in plant 7991

Item	Resource	Resource (Text)	Quantity	Un	Total Value	COCr
1	7991 97817	SODIUM SILICATE R=3.4 SOLID BULK	1,000	KG	6,466.46	VEF
<b>Material</b>					<b>= 6,466.46</b>	<b>VEF</b>
					<b>= 6,466...</b>	<b>VEF</b>