

CK382 - Material does not exist in withdrawal plant



Material in plant is specially procured. The special procurement key points to withdrawal plant. However, material does not exist in this plant.

Example

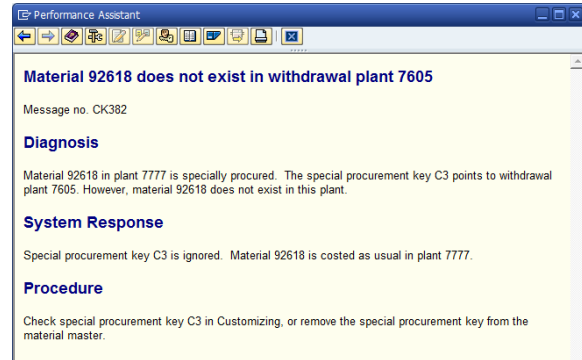
Material 92618 in plant 7777 is specially procured. The special procurement key C3 points to withdrawal plant 7605. However, material 92618 does not exist in this plant.

Procedure



Check the special procurement key with MM03 and request its modification to the person who is maintaining the view MRP2

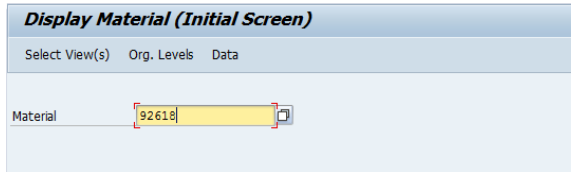
=> The message doe



STEP 1

- Use transaction **MM03**
- Enter the material code and

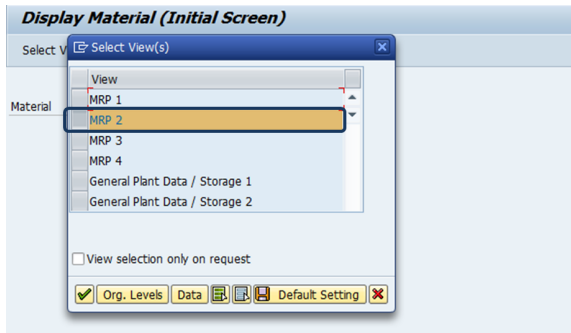
Enter ↵



STEP 2

- Select the view "**MRP2**" and

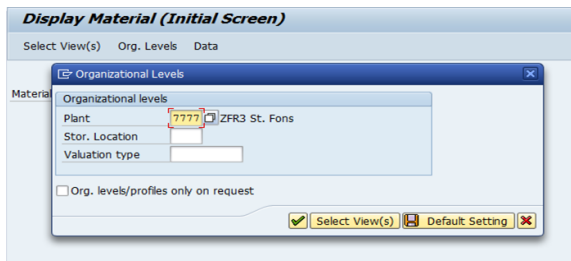
Enter ↵



STEP 3

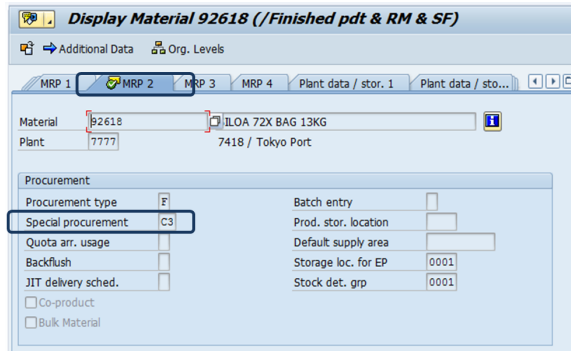
- Enter the plant code and

Enter ↵




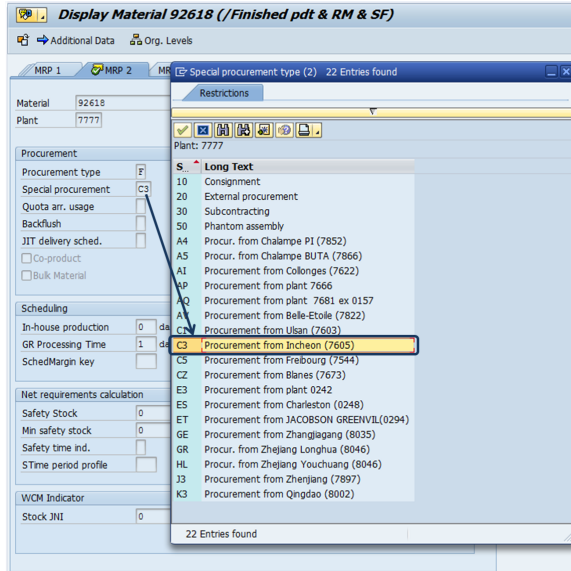
STEP 4

- The special procurement code is **C3**





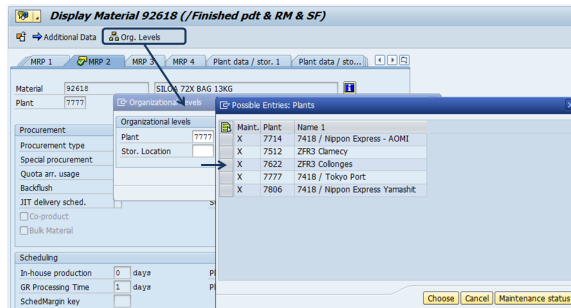
STEP 5

- Click on the code and  to have the description of the code
- The code **C3** means that the material 92618 comes from the plant **7605** Incheon



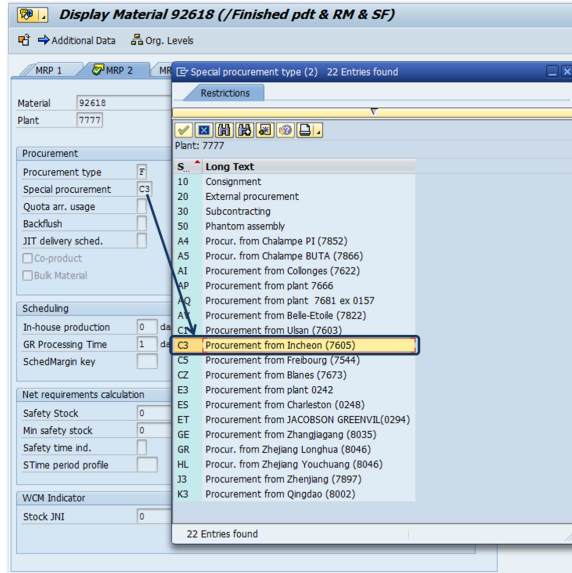
STEP 1

- Use transaction **MM03**
- Click  **Org. Levels** to display the organization level and click  beside the plant code
- The list of plants is displayed => The material code 92618 exists in 5 plants
- If the material 92618 is not produced in the plant 7777 is can be procured externally or in another plant in WP1 listed below :
 - 7512 ZFR3 Clamecy
 - 7622 ZFR3 Collonges
 - 7714 7418 / Nippon Express - AOMI
 - 7806 7418 / Nippon Express Yamashit



STEP 2

- The existing procurement code **C3** should be removed or replaced as it refers to a plant 7605 Incheon in which the material code 92618 was not created



A wrong procurement code does not prevent from releasing the costing. Nonetheless it should be updated in order to ensure the accuracy of the calculation of the integrated margin in BW