


# KSV1 - Create Actual Distribution Cycle

## STEP 1

Use transaction code : KSV1

 Create Actual Distribution Cycle : Initial Screen

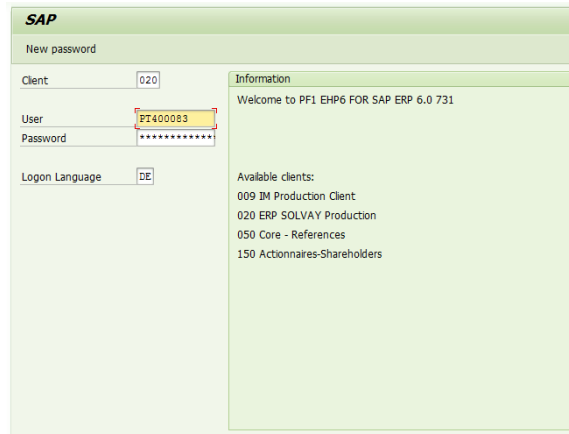
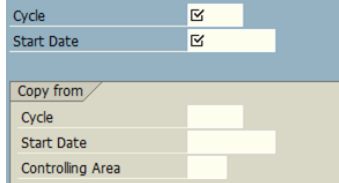
### Remark

Distribution allocations are used to the primary costs of a cost center. The information about the original cost element will be transferred to the receiver.


### ERP Client Languages

When creating an Distribution Allocation, the texts must be added also in the other language ERP (both cycle name and segment name and description). To do that you must logoff, enter in the language requested (e.g. DE), and modify (KSV2) the Distribution Allocation, adding the names and descriptions in the local language.

## Create Actual Distribution Cycle: Initial Screen



## STEP 2

Enter the cycle code and the starting date and 

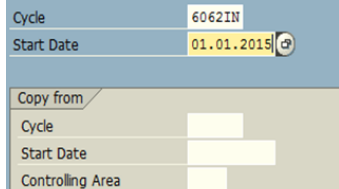
### Validity Date

The starting date determines the earliest validity date of the cycle. If a similar cycle already exists you can make a copy from the reference cycle and modify it afterwards. You can display the existing cycles by selecting the match code.

### Codification Rules

[Assessment cycles Rules](#)

## Create Actual Distribution Cycle: Initial Screen



For the name codification consider CCC CDV where CCCC is the company code and for DV is for Distribution Cycles, whenever a company is harmonized on SYMPA standards.

**STEP 3**

1. Enter the validity date (to last day of the year)
2. Enter the description of the cycle
3. Check the Indicator "Iterative"
4. Check the Field Groups "Object Currency"

**STEP 4**

Click **Attach segment**

**Segment Name**

Segment Name according to Assessment Allocations Rules should be equal to Sender Cost Center inside the segment (exceptions: Insurance Allocations as driver is the type of insurance cost and therefore Segment Name = Cost Element codification).

**STEP 5**

**Enter the segment code and description**

Update the tab "Segment Header" :

1. Assessment Cost element or Allocation structure
2. Sender values:
  - Sender rule = Posted amounts
  - Share in % = 100 %
3. Receiver tracing factor for Insurance & IAS19 :
  - Receiver rule : Variable portions
  - Var.portion type : Actual Statistical Key Figures
  - Scale Neg. Tracing Factors : No scaling

**STEP 6**

**Update the tab "Senders/Receivers"**

1. Enter a cost center or a group of cost center (group in the standard hierarchy)
2. Enter a cost element or a group of cost element (in the hierarchy ZRCS-CNP). It is not necessary when an allocation structure is used
3. Enter the receiving cost center or group of cost centers

Controlling Area: 2026 Rhodia Asia Pacific  
 Cycle: 6062III Corporate Insurance Cycle  
 Segment Name: 98300259 D&O/EPL Liability  Lock indicator

Segment Header Senders/Receivers Sender Values Receiver Tracing Factor

| Sender       | From          | To | Group    |
|--------------|---------------|----|----------|
| Cost Center  | 6062-5998 (1) |    |          |
| Cost Element | 98300259 (2)  |    |          |
| Receiver     |               |    | 6062 (3) |
| Order        |               |    |          |
| Cost Center  |               |    | 6062     |
| Cost Object  |               |    |          |
| WBS Element  |               |    |          |

**STEP 7**

**Go to the tab "Sender Values"**

No change needed

Controlling Area: 2026 Rhodia Asia Pacific  
 Cycle: 6062III Corporate Insurance Cycle  
 Segment Name: 98300259 D&O/EPL Liability  Lock indicator

Segment Header Senders/Receivers Sender Values Receiver Tracing Factor

Sender values  
 Share in %: 100.00  
 Actual value origin  Plan value origin

Selection criteria  
 From to Group  
 Version

**STEP 8**

**i** Only when the Variable portions => Actual Statistical Key Figures have been chosen in the tab "Segment Header"

Go to the tab "Receiver Tracing Factor" & enter the **Stat. Key fig.**

Controlling Area: 2026 Rhodia Asia Pacific  
 Cycle: 6062III Corporate Insurance Cycle  
 Segment Name: 98300259 D&O/EPL Liability  Lock indicator

Sender Values Receiver Tracing Factor Receiver Weighting Factors

Tracing Factor  
 Var. portion type: Actual Statistical Key Figures  
 Scale Neg. Tracing Factors: No scaling

Selection Criteria  
 From to Group  
 Stat. key fig.: LIAB (1)  
 Activity Type

**STEP 9**

**Go to the tab "Receiver Weighting Factors"**

Enter the receivers depending on the receiver tracing factor chosen in the tab "Segment Header" :

=> It should not be necessary to update this tab when a statistical key figure is used

| Receivers | Factor per |
|-----------|------------|
| Cost Ctr  | 100        |
| 6062-5003 | 100        |
| 6062-5008 | 100        |
| 6062-5009 | 100        |
| 6062-5010 | 100        |
| 6062-5011 | 100        |
| 6062-5012 | 100        |
| 6062-5013 | 100        |
| 6062-5014 | 100        |
| 6062-5015 | 100        |
| 6062-5016 | 100        |
| 6062-5017 | 100        |

**STEP 10**

Create a new segment by clicking

Attach segment

STEP 11

### Create Cycle Run Group

**!** Cycle Run Group  
Codification Rules

[Cycle Run Group Rules](#)

To proceed with Cycle Run Group creation please follow the next documentation:

[KSUx KSVx KEUx - Create a cycle run group](#)

STEP 12

Save 

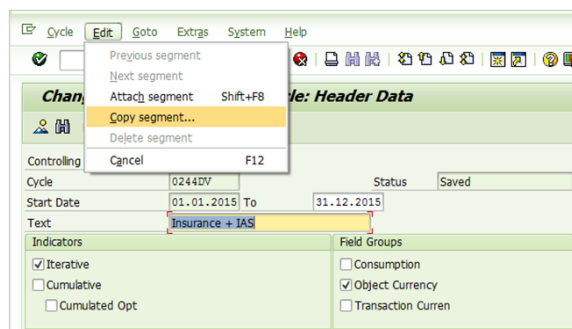
STEP 13

### Create segments with reference

Enter the name of the segment you want to copy from and define a name for the new segment. Press

Continue

Now you can modify the appended segment.



**!** Receiver Cost Center Modified

When the receiver cost center is modified, the **Factor per** inside the **Receiver Weighting Factors**

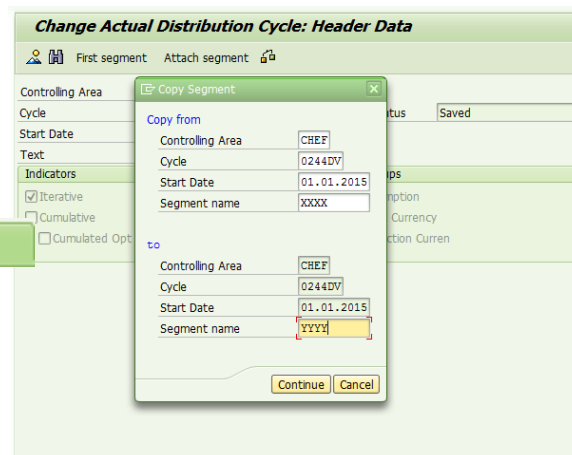
**Receiver Weighting Factors**

is deleted by the system and a new percentage must be entered.

**✓** Total Factor Percentage

Total of Factor Percentage after the change should total 100:

Factor per



STEP 14

**Change segment in other language**

The new segment is firstly created with connection language "EN". If the name of the segment should also appear in another language, logoff, enter in the language requested (e.g. DE), and change (KSV2) the segment name in the local language.

The screenshot shows the SAP login interface. At the top, the SAP logo is visible. Below it, the text "New password" is displayed. The main area contains several input fields: "Client" with the value "020", "User" with the value "PF1400083", "Password" with masked characters, and "Logon Language" with the value "DE". To the right of these fields is an "Information" panel. The information panel contains the text "Welcome to PF1 EHP6 FOR SAP ERP 6.0 731" and a list of "Available clients": "009 IM Production Client", "020 ERP SOLVAY Production", "050 Core - References", and "150 Actionnaires-Shareholders".