

# Aroma Supply Chain Dashboard

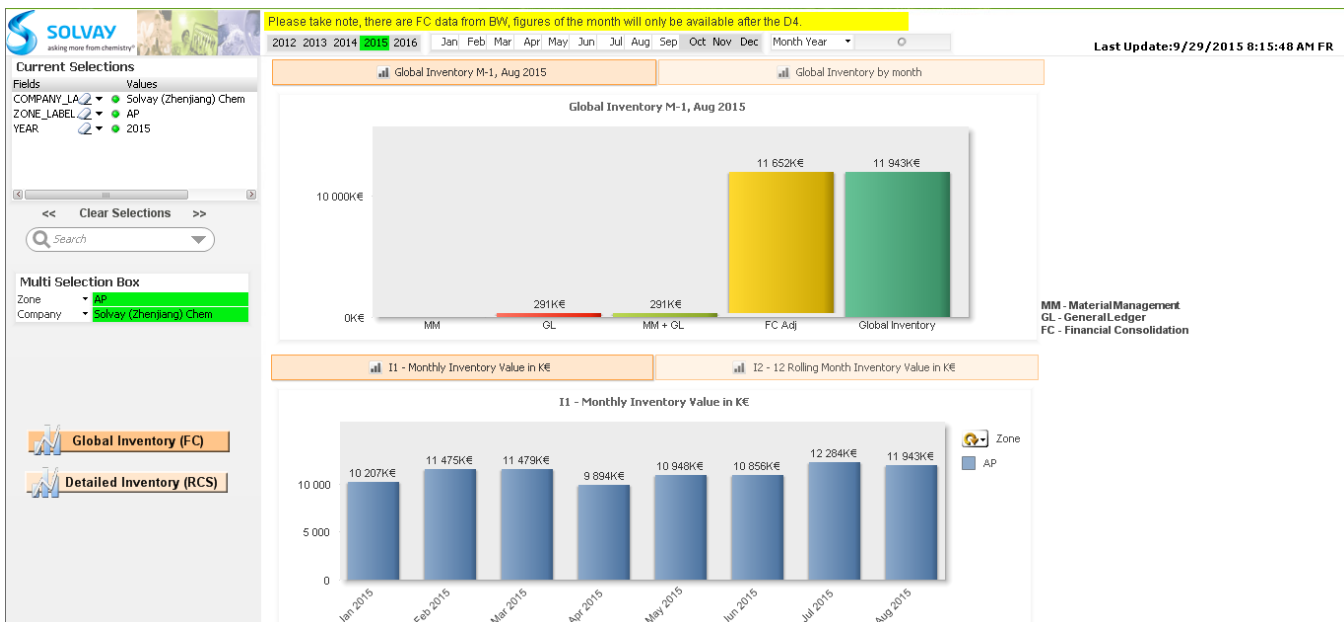
## A dashboard dedicated to GBU Aroma Performance.

In this dashboard, 8 types of information can be obtained directly from each tabs.

Tab name	Purpose
KPIs Definitions	Reasons for OTIF / Non-OTIF
Inventory Level	Inventory on a Monthly / Quarterly / Global level / Monthly / 12 months rolling
Logistic & Packaging Costs	Display Logistic / Packaging cost based on Monthly / 12 months rolling
OTIF-C	Statistics display of OTIF records Monthly / Quarterly against type mode of transportation
Non OTIF-C	Breakdown reasons for not complying with OTIF
CCR	Link to SMART Complaint Dashboard (requires authorization)
Sales Plan Accuracy	Sales trend of Actual versus Forecast on a 1-month / 3-month / 6-month scale by Material
Production Plan Accuracy	Production volume Plan versus Actual with 1 month comparison by Material
Schedule Adherence	Schedule adherence matrices displayed by Material

### Inventory Level tab

A typical graphical chart depicts the inventory based on the selection criteria is shown once the tab is clicked on.



To refine the search, please define the selection criteria:-

- Zone
- Company

**Multi Selection Box**

Zone     ▼ AP

Company ▼ Solvay (Zhenjiang) Chem

- Date / Month  
Click on the desired Year and Month. Once selected, it will appeared as Green.

2012 2013 2014 **2015** 2016    Jan Feb Mar Apr May Jun Jul Aug Sep Oct Nov Dec    Month Year ▾

- Once the criteria are selected, it will appeared under the **Current Selections** option box. Graphs will be automatically refreshed based on the criteria selected.

**Current Selections**

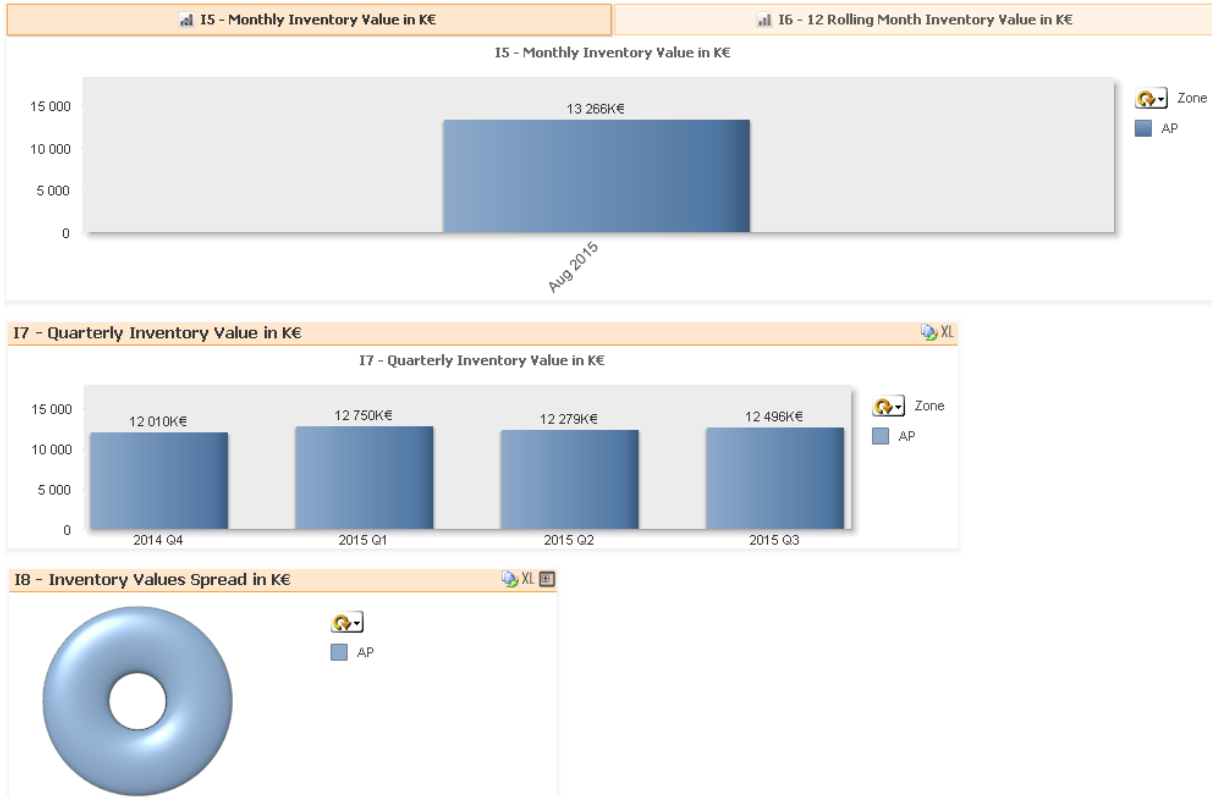
Fields	Values
COMPANY_LA	Solvay (Zhenjiang) Chem
ZONE_LABEL	AP
YEAR	2015

Within the page, 2 types of graphs can be presented.

- Global Inventory (FC)  **Global Inventory (FC)**  
Data are presented with reference to Financial Consolidate (FC) system.

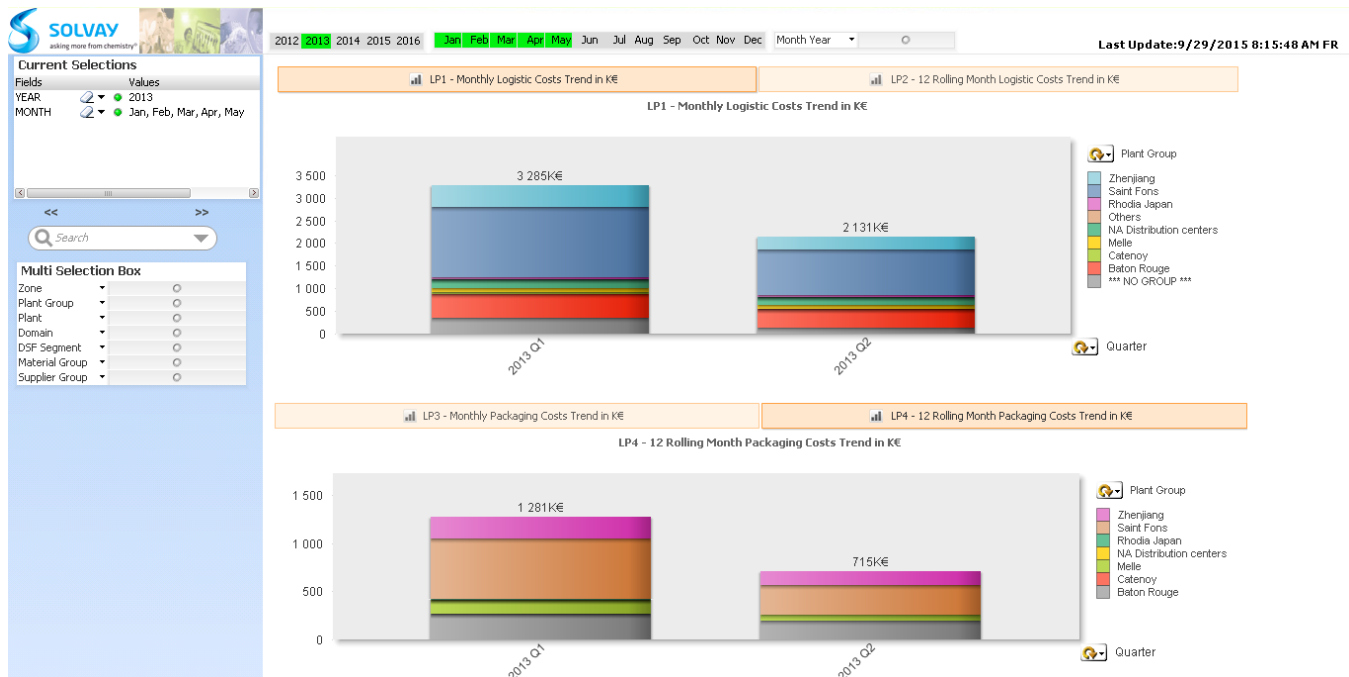


- Detailed Inventory (RCS)  **Detailed Inventory (RCS)**  
Data are presented with reference to Rhodia Core System (RCS).



## Logistic and Packaging Costs Tab

A graph showing the Logistic and Packaging cost based on criteria selected.



To refine the search, please define the selection criteria:-

- Zone
- Plant Group

- Plant
- Domain
- DSF Segment
- Material Group
- Supplier Group

**Multi Selection Box**

Zone	▼	<input type="radio"/>
Plant Group	▼	<input type="radio"/>
Plant	▼	<input type="radio"/>
Domain	▼	<input type="radio"/>
DSF Segment	▼	<input type="radio"/>
Material Group	▼	<input type="radio"/>
Supplier Group	▼	<input type="radio"/>

- Once the criteria are selected, it will appear under the **Current Selections** option box. Graphs will be automatically refreshed based on the criteria selected.

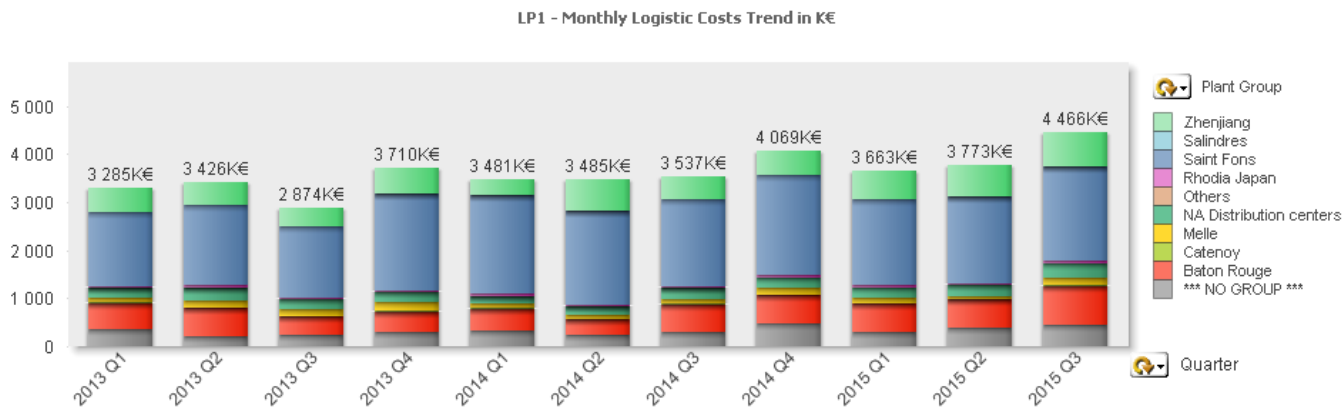
**Current Selections**

Fields	Values
PLANT_LABEL	7811 Zhenjiang
ZONE_LABEL	AP
YEAR	2013
MONTH	Jan, Feb, Mar, Apr, May


- Toggle between the 4 indicators below to view on any of the selections shown:-

- To view monthly Logistic Costs monthly trend, click on

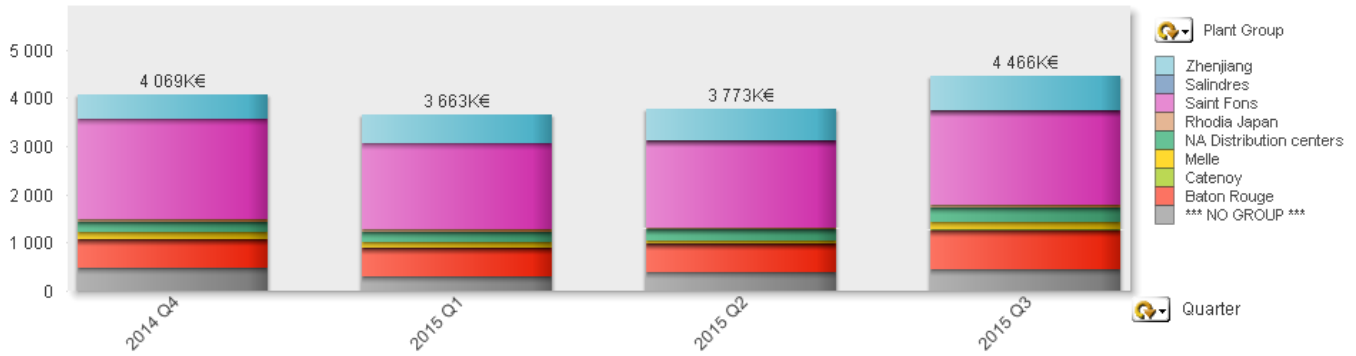
 LP1 - Monthly Logistic Costs Trend in K€



- To view logistics cost in 12 month rolling trend, click on

 LP2 - 12 Rolling Month Logistic Costs Trend in K€

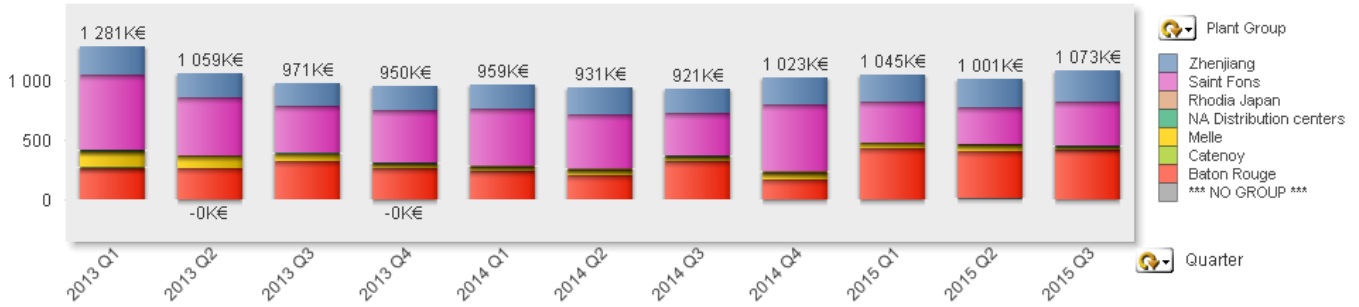
LP2 - 12 Rolling Month Logistic Costs Trend in K€



To view on packaging monthly trend, click on

[LP3 - Monthly Packaging Costs Trend in K€](#)

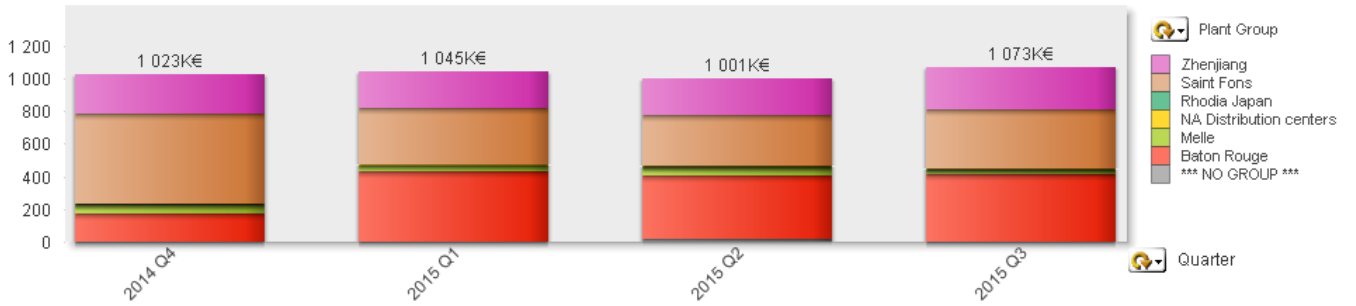
LP3 - Monthly Packaging Costs Trend in K€



To view packaging cost on a 12 monthly rolling trend, click on

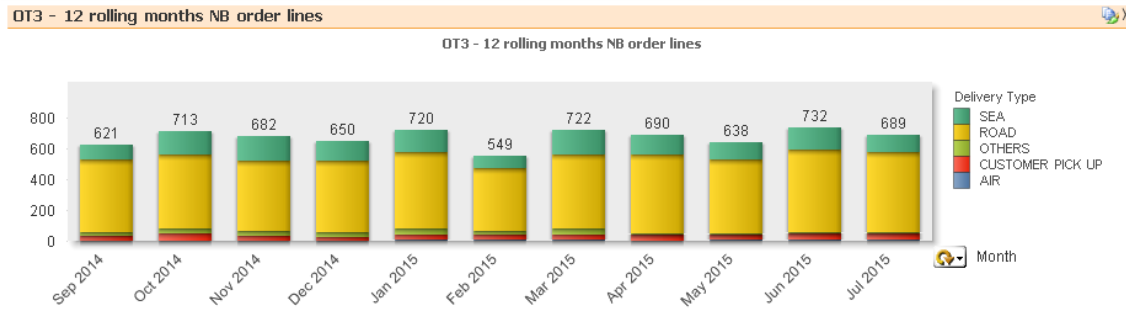
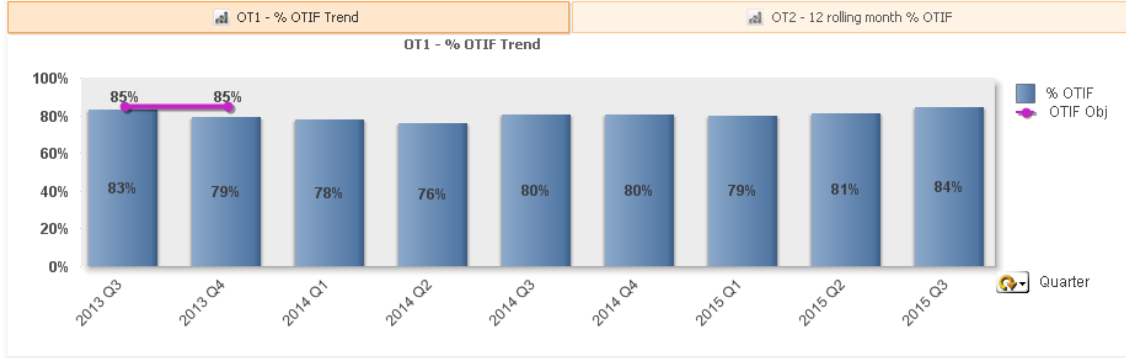
[LP4 - 12 Rolling Month Packaging Costs Trend in K€](#)

LP4 - 12 Rolling Month Packaging Costs Trend in K€



## OTIF-C Tab

Under OTIF-C tab, graphs showing OTIF trend based on selected criteria chosen.



To refine the search, please define the selection criteria:-

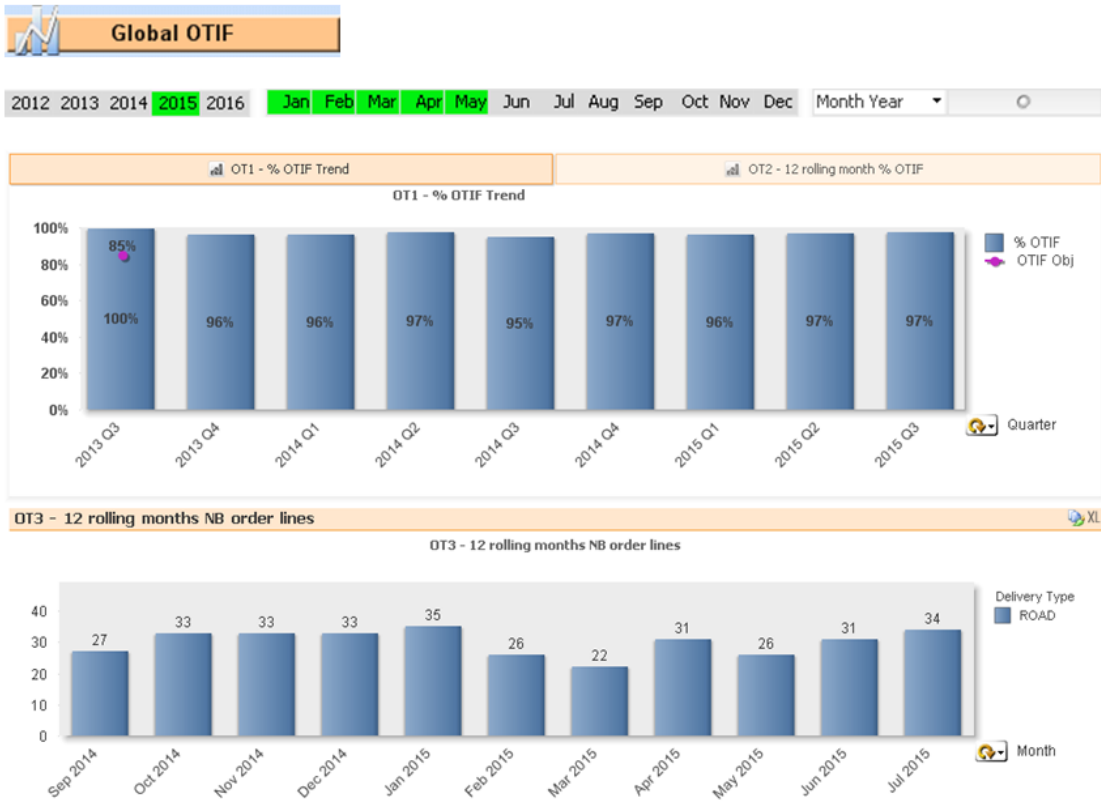
- Zone
- Plant Group
- Plant
- Segment
- Main Product
- Material
- Customer Zone
- Customer Country
- Customer
- Sales Organisation
- Non OTIF Causes

Multi Selection Box		
Plant Zone	▼	<input type="radio"/>
Plant Group	▼	<input checked="" type="radio"/>
Plant	▼	<input type="radio"/>
Segment	▼	<input type="radio"/>
Main Product	▼	<input type="radio"/>
Material	▼	<input type="radio"/>
Customer Zone	▼	<input type="radio"/>
Customer Co...	▼	<input type="radio"/>
Customer Group	▼	<input type="radio"/>
Customer	▼	<input type="radio"/>
Sales Organis...	▼	<input type="radio"/>
Delivery Type	▼	<input type="radio"/>
Non OTIF Ca...	▼	<input type="radio"/>

- Once the criteria are selected, it will appeared under the **Current Selections** option box. Graphs will be automatically refreshed based on the criteria selected.

Current Selections	
Fields	Values
SALES_ORG_ID BEL	SOLVAY JAPAN, LTD
PLANT_GRP	NOT Asia Tollers, Kem One, Salindres

- Within the tab, 3 different option of graphs are provided.
  - Click on the **Global OTIF** icon to view the OTIF information on a global scale.  
Select desired **Year / Month** (shown in green) before data extraction.

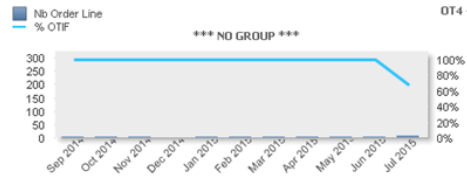


- Click on **OTIF by Plant** icon. The graphs will display OTIF information with respect to the Plants.  
Select desired **Year / Month** (shown in green) before data extraction.

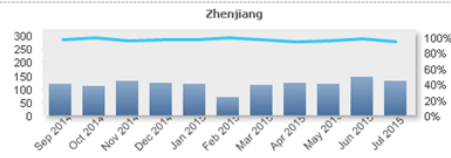
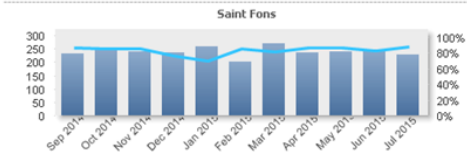
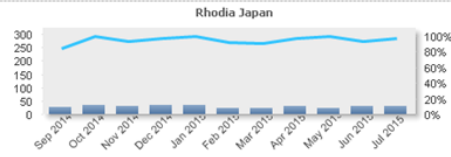
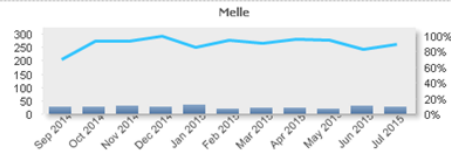
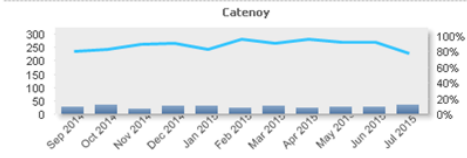
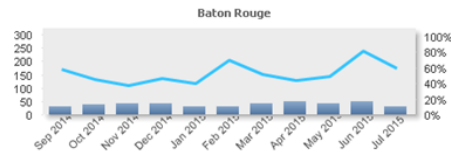
## OTIF by Plant

2012 2013 2014 2015 2016 Jan Feb Mar Apr May Jun Jul Aug Sep Oct Nov Dec Month Year

OT4 - Nb Order Line



OT4 - Nb Order Line



- To view OTIF data in detailed, click on the **Detailed OTIF** icon. Select desired **Year / Month** (shown in green) before data extraction.

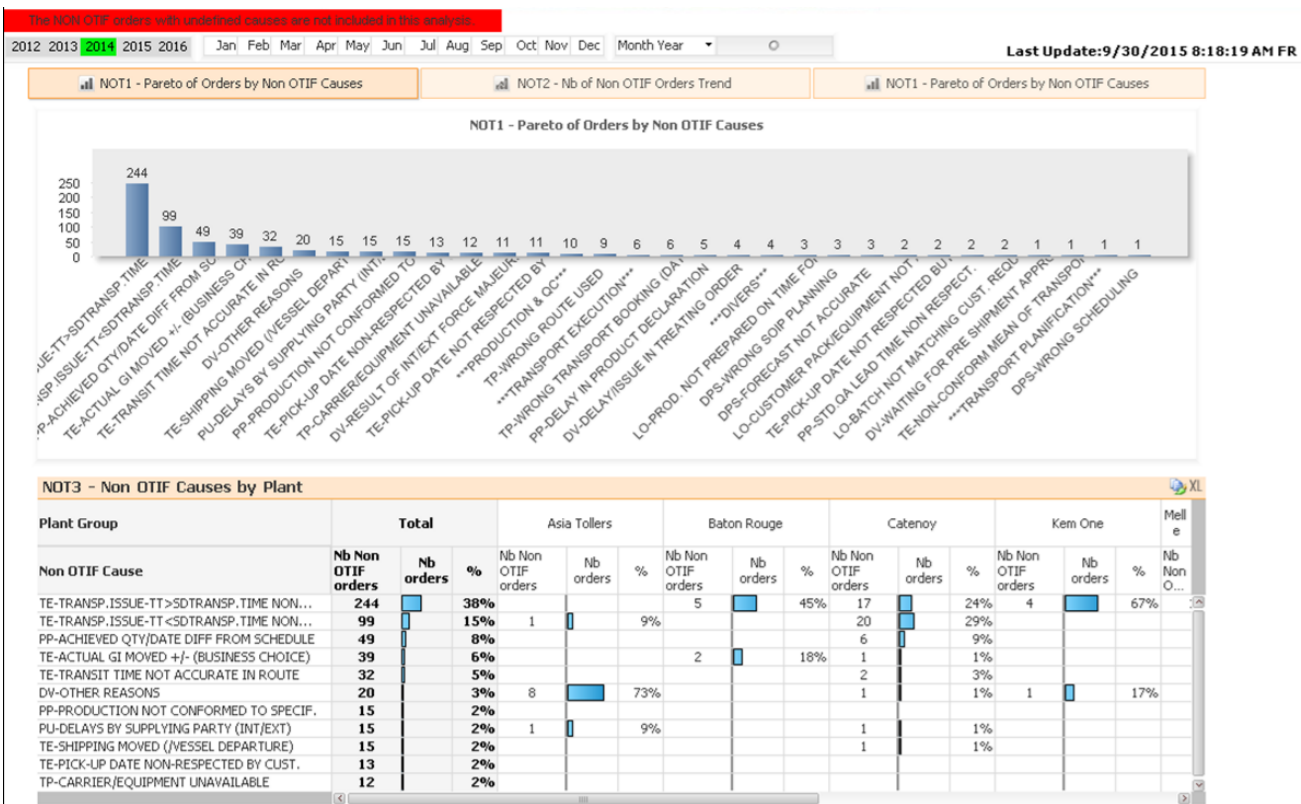
2012 2013 2014 2015 2016 Jan Feb Mar Apr May Jun Jul Aug Sep Oct Nov Dec Month Year

OT5 - Detailed OTIF

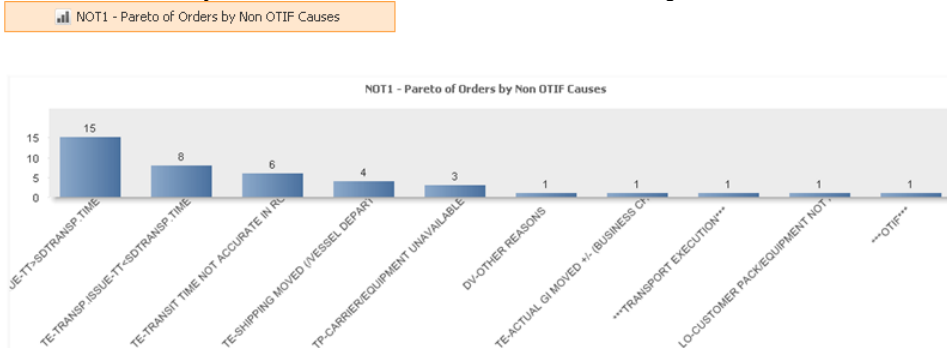
Plant Group	Month	Total	Jan 2015	Feb 2015	Mar 2015	Apr 2015	May 2015
<b>Total</b>	Nb order line	<b>3,319</b>	<b>720</b>	<b>549</b>	<b>722</b>	<b>690</b>	<b>638</b>
	Nb non OTIF	<b>695</b>	<b>153</b>	<b>99</b>	<b>157</b>	<b>161</b>	<b>125</b>
	% OTIF	<b>79%</b>	<b>79%</b>	<b>82%</b>	<b>78%</b>	<b>77%</b>	<b>80%</b>
*** NO GROUP	Nb order line	<b>10</b>	2	2	1	2	3
***	Nb non OTIF	<b>0</b>	0	0	0	0	0
	% OTIF	<b>100%</b>	100%	100%	100%	100%	100%
Baton Rouge	Nb order line	<b>193</b>	30	30	42	48	43
	Nb non OTIF	<b>96</b>	18	9	20	27	22
	% OTIF	<b>50%</b>	40%	70%	52%	44%	49%
Catenoy	Nb order line	<b>133</b>	30	24	31	23	25
	Nb non OTIF	<b>12</b>	5	1	3	1	2
	% OTIF	<b>91%</b>	83%	96%	90%	96%	92%
Melle	Nb order line	<b>116</b>	34	20	21	22	19
	Nb non OTIF	<b>10</b>	5	1	2	1	1
	% OTIF	<b>91%</b>	85%	95%	90%	95%	95%
NA Distribution centers	Nb order line	<b>992</b>	213	181	222	208	168
	Nb non OTIF	<b>333</b>	43	57	77	92	64
	% OTIF	<b>66%</b>	80%	69%	65%	56%	62%
Rhodia Japan	Nb order line	<b>134</b>	34	24	22	30	24
	Nb non OTIF	<b>5</b>	0	2	2	1	0
	% OTIF	<b>96%</b>	100%	92%	91%	97%	100%
Saint Fons	Nb order line	<b>1,204</b>	259	200	269	236	240
	Nb non OTIF	<b>220</b>	78	29	50	32	31
	% OTIF	<b>82%</b>	70%	86%	81%	86%	87%
Zhenjiang	Nb order line	<b>537</b>	118	68	114	121	116
	Nb non OTIF	<b>19</b>	4	0	3	7	5
	% OTIF	<b>96%</b>	97%	100%	97%	94%	96%

## Non OTIF-C Tab

In the **Non OTIF-C** tab, it detailed the various reasons contributing to non OTIF and its breakdown percentage.



- 2 types of graphs are further presented in the tab.
  - Pareto of Orders by Non OTIF Causes** : Breakdown of order counts against OTIF reasons.



- Nb of Non OTIF Order Trend** : Number of non OTIF orders by month or quarter



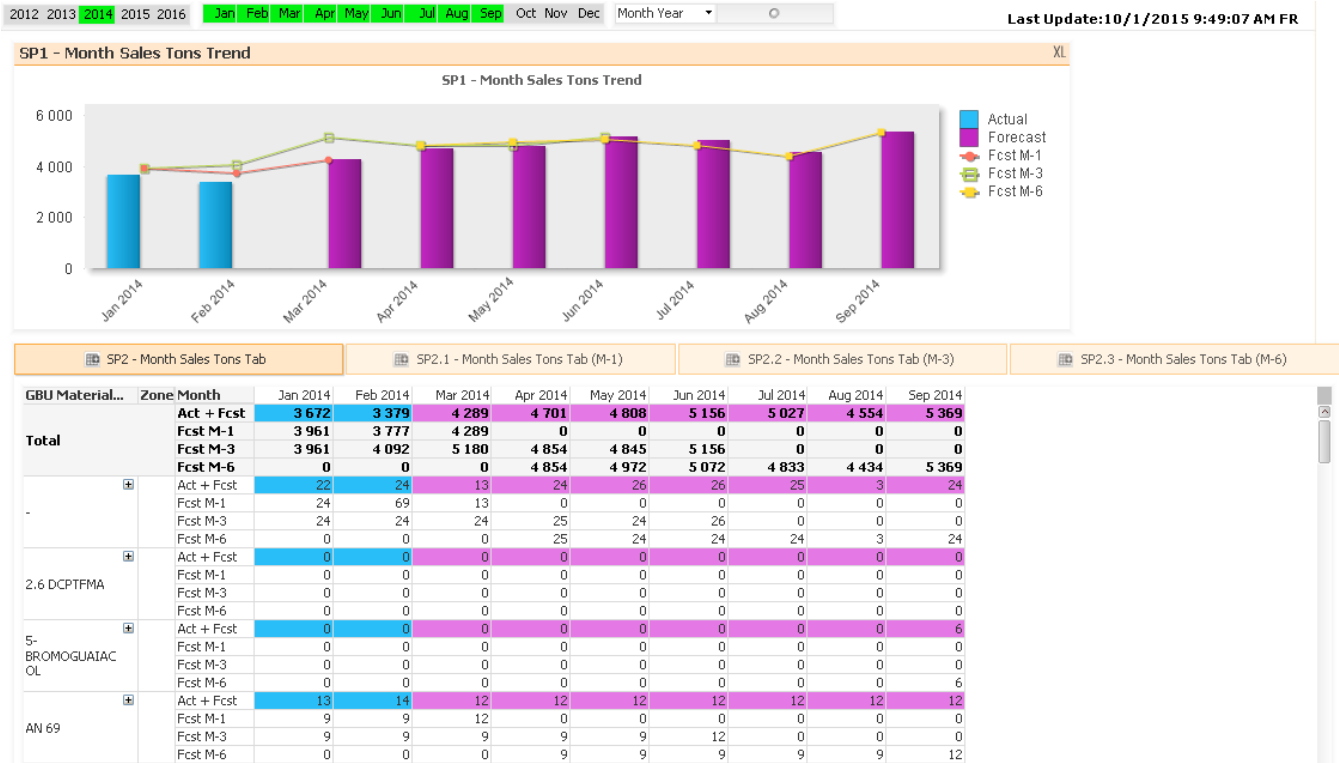
A link will be redirected to **Complaint CCR Dashboard**.

## Sales Plan Accuracy Tab

In this tab, a graph showing the trend between Actual and Forecast quantity against the data selected is displayed.

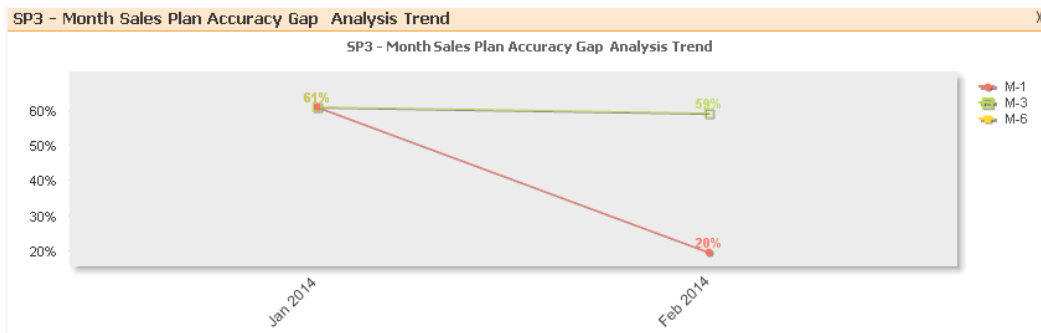


This is similar to clicking the icon located on the lower left hand side of the page.



When the icon (located on the lower left hand side of the page) is clicked, it showed sales plan accuracy gap analysis trend of 1/3/6 month.

Data extracted are at material group level. Change the **Year / Month** (in green) according to desired selection.



SP4 - Month Sales Plan Accuracy Tab			Jan 2014				Feb 2014			Mar 2014			Apr 2014
GBU Material Group	Zone	Sub-Zone	M-1	M-3	M-6	M-1	M-3	M-6	M-1	M-3	M-6	M-1	
<b>Total</b>	<b>Total</b>		61%	61%	-	20%	59%	-	-	-	-	-	
ANISOLE	AP	<b>Total</b>	-	-	-	100%	-	-	-	-	-	-	
		NEA	-	-	-	100%	-	-	-	-	-	-	
CATECHOL	AP	<b>Total</b>	64%	64%	-	59%	78%	-	-	-	-	-	
		CHINA	64%	64%	-	59%	78%	-	-	-	-	-	
		INDIA	68%	68%	-	72%	94%	-	-	-	-	-	
		NEA	-	-	-	-	43%	-	-	-	-	-	
		SEA	-	-	-	-	-	-	-	-	-	-	
CDFA	AP	<b>Total</b>	-	-	-	-	-	-	-	-	-	-	
		CHINA	-	-	-	-	-	-	-	-	-	-	
		NEA	-	-	-	-	-	-	-	-	-	-	

To refine the search, please define the selection criteria:-

- Zone
- Sub-zone
- GBU Material Group
- Segment

**Multi Selection Box**

Zone ▼ **AP**

Sub-Zone ▼

GBU Material... ▼

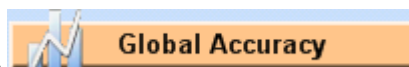
Segment ▼

- Once the criteria are selected, it will appeared under the **Current Selections** option box. Graphs will be automatically refreshed based on the criteria selected.

**Current Selections**

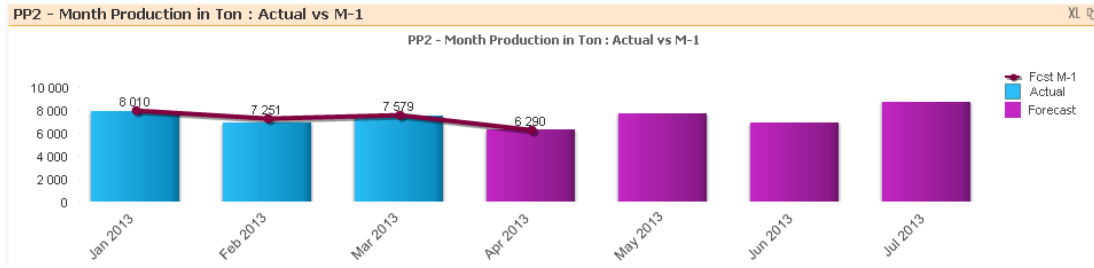
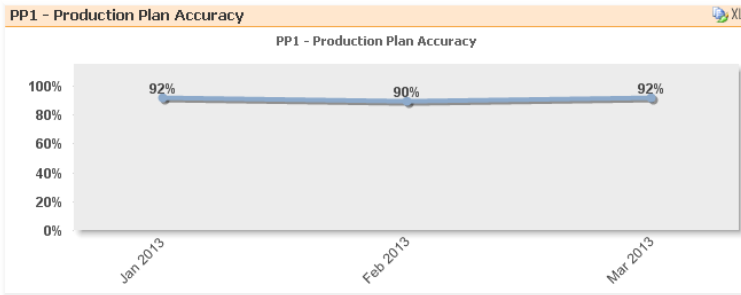
Fields	Values
ZONE_LABEL	AP
YEAR	2014
MONTH	NOT Oct, Nov, Dec

## Production Plan Accuracy Tab



In the main tab, 3 information are displayed. This is similar to clicking the corner of the page.

Select desired Year / Month (shown in green) before extracting the data.



PP3 - Month Production in Ton : Actual vs M-1 Details

GBU Material	Material	PLANT_LABEL	Month	Jan 2013	Feb 2013	Mar 2013	Apr 2013	May 2013	Jun 2013	Jul 2013
<b>Total</b>			Act + Fcst	7 881	6 886	7 484	6 290	7 655	6 866	8 666
			M-1	8 010	7 251	7 579	6 290	0	0	0
	PC Flakes	7811 Zhenjiang	Act + Fcst	954	844	924	840	840	705	933
			M-1	903	813	882	840	0	0	0
CATECHOL	PC Molten	7424 Baton Rouge	Act + Fcst	674	590	738	747	827	747	881
			M-1	792	747	774	747	0	0	0
		ZFR3 St. Fons	Act + Fcst	990	869	1 061	167	999	934	961
			M-1	956	858	1 021	167	0	0	0

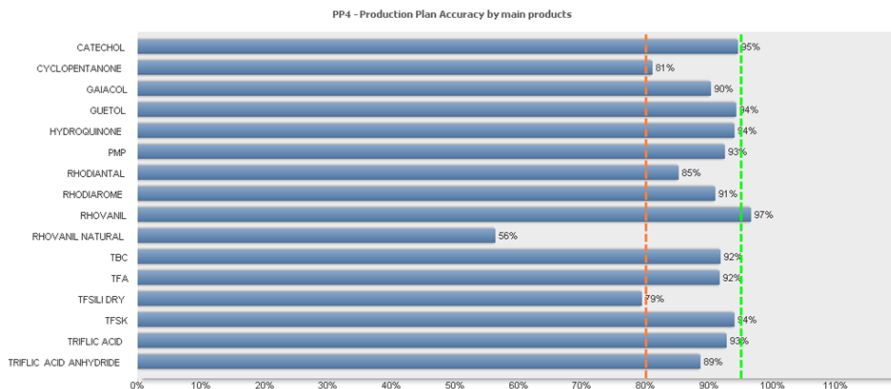
- **PP1 - Production Plan Accuracy**
  - Graph of Production Plan against month selected
- **PP2 - Month Production in Ton : Actual vs M-1**
  - Graph of Actual production vs Forecast M-1 (in ton) against month selected
- **PP3 - Month Production in Ton : Actual vs M-1 Details**
  - Statistical data displayed in detailed

**Main Product Accuracy**

When the icon is clicked, 2 types of graphs will be displayed.

- **PP4 - Production Plan Accuracy by main products**

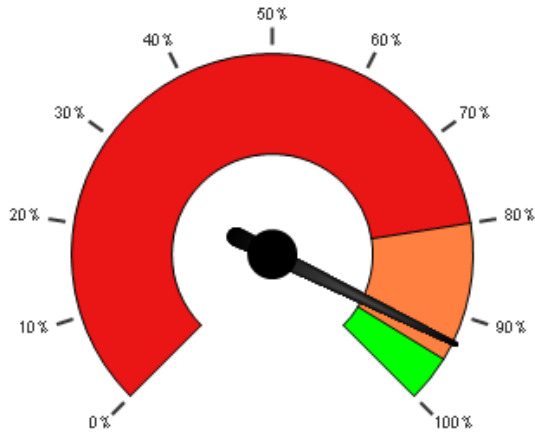
PP4 - Production Plan Accuracy by main products



PP5 - Production Plan Accuracy overview

- When the icon is clicked, the dashboard graph will be reflected instead.

PP5 - Production Plan Accuracy overview



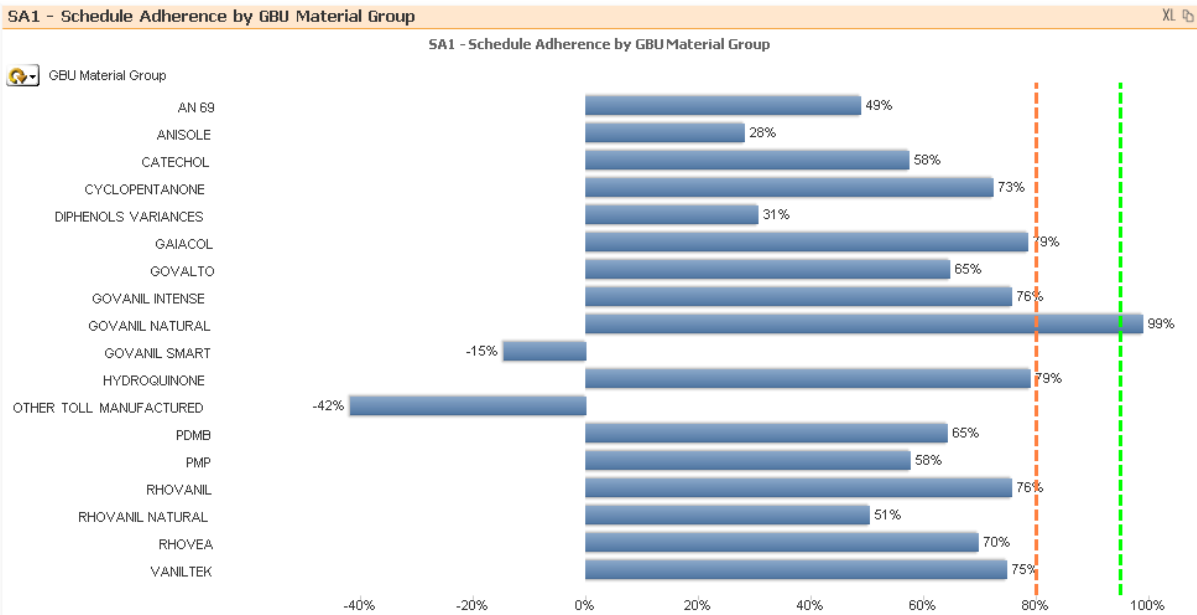
**Schedule Adherence Tab**

In this tab, bar chart of material group against schedule adherence are displayed. This is similar to clicking the



icon.

2012 2013 2014 2015 2016 Jan Feb Mar Apr May Jun Jul Aug Sep Oct Nov Dec Month Year  Last Update: 10/1/2015 9:49:07 AM FR




When the icon is clicked, a set of statistical data with Plant / GBU Material Group / Material Plant are displayed.

Select desired Year / Month (shown in green) on the date menu bar before extracting the data.

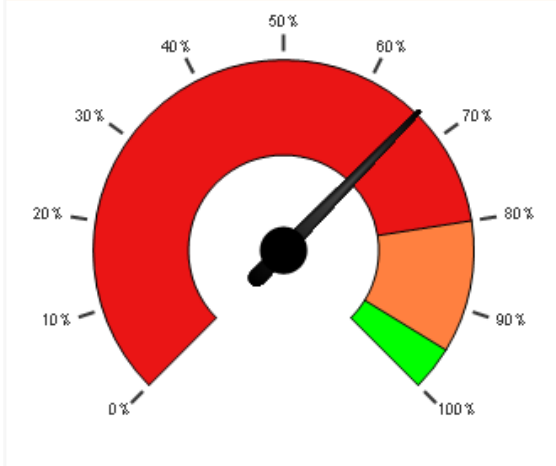
SA2 - Schedule Adherence by Material Plant Details

Week	Plant	GBU Material Group	Material Plant	Planned Prod Fixed	Actual Prod	SA %		
<b>Total</b>				<b>11 149 680</b>	<b>11 938 499</b>	<b>66%</b>		
01.2015	ZFR3 Melle	RHOVANIL NATURAL	VANILLINE BB 225 KG IMPRECIS SF	230	508	-21%	●	●
			CATECHOL FLAKES - BIG BAG LINER 1...	70 000	134 610	8%	●	●
			CATECHOL	140 000	134 610	96%	●	●
			CATECHOL MOLTEN BULK	233 051	255 553	90%	●	●
			GAIAACOL	145 950	77 700	53%	●	●
			GOVANIL INTENSE	1 248	2 286	17%	●	●
			HYDROQUINONE EXTRA PURE - 25KG...	116 000	99 455	86%	●	●
			HYDROQUINONE EXTRA PURE - BB 500...	10 000	10 000	100%	●	●
			HYDROQUINONE EXTRA PURE - BB 80...	17 600	35 200	0%	●	●
			HYDROQUINONE	162 400	166 855	97%	●	●
	ZFR3 St. Fons	HYDROQUINONE EXTRA PURE - CT 400...	17 600	21 200	80%	●	●	
		HYDROQUINONE PREMIUM A - 25KG B...	10 000	11 000	90%	●	●	
		HYDROQUINONE PREMIUM A - BB 800KG	24 000	39 200	37%	●	●	
		OTHER TOLL MANUFACTURED	2 000	0	0%	●	●	
		PMP	2 000	0	0%	●	●	
		PARAMETHOXYPHENOL MOLTEN -IBC ...	3 000	0	0%	●	●	
		RHOVANIL BB250KG/Plastic pal	3 000	0	0%	●	●	
		RHOVANIL	2 400	2 700	88%	●	●	
		RHOVANIL BOX 25KG / PAL 300KG	45 000	50 400	88%	●	●	
		RHOVANIL BOX 25KG / PAL 600KG	82 250	60 984	74%	●	●	
02.2015	ZFR3 Melle	CYCLOPENTANONE	CYCLOPENTANONE RECTIFIEE VI	54 000	0	0%	●	●
			DISTIL.CYCLOPENTANONE BULK.	25 000	24 900	100%	●	●
	ZFR3 St. Fons	RHOVANIL NATURAL	DISTIL.CYCLOPENTANONE OT MET.D...	15 200	15 200	100%	●	●
			VANILLINE BB 225 KG IMPRECIS SF	230	0	0%	●	●
			CATECHOL FLAKES - BIG BAG LINER 1...	40 000	41 570	96%	●	●
			CATECHOL FLAKES BULK INT.	80 000	41 570	52%	●	●
			CATECHOL MOLTEN BULK	233 051	231 935	100%	●	●
			GAIAACOL	145 950	126 000	86%	●	●
			GOVANIL INTENSE (INTERM) 208KG/B...	1 248	2 501	-0%	●	●
			HYDROQUINONE	52 000	78 975	48%	●	●

 **Global SA**

- When the  is clicked, a dashboard graph showing the Schedule Adherence overview is displayed.

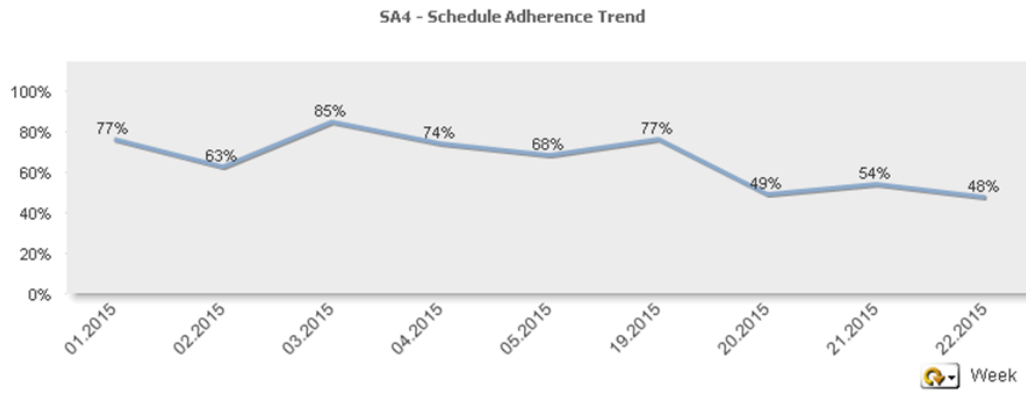
SA3 - Schedule Adherence Overview 



- At the same time, 2 other graphs can be displayed on the page.
  - SA4 - Schedule Adherence Trend

SA4 - Schedule Adherence Trend

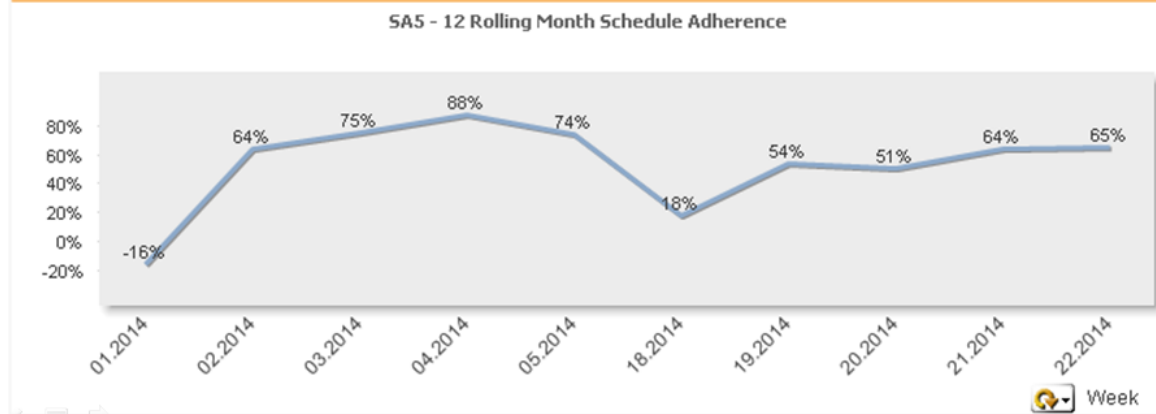
SA4 - Schedule Adherence Trend



SA5 - 12 Rolling Month Schedule Adherence

SA5 - 12 Rolling Month Schedule Adherence

SA5 - 12 Rolling Month Schedule Adherence



For more information contact [SBS Support](#)