

Tables management step-by-step

Overview

Explain how the tables can be updated within Solvay ONE.



data table vs layout table

You should use tables only to present some data. We do not recommend to use it as a layout, to just split your page design in several sections.

Table of contents

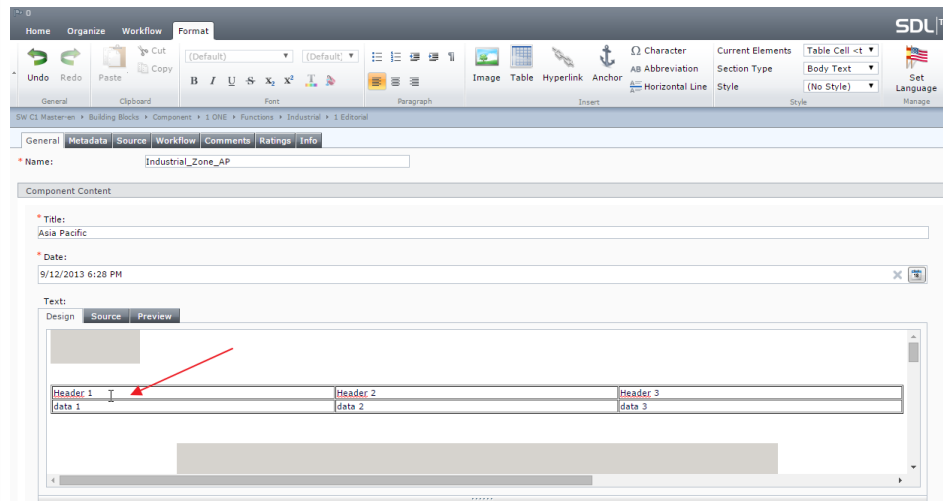
- [Overview](#)
- [Table of contents](#)
- [Step-by-step](#)
 - [Step 1: Access the Table Editor](#)
 - [Step 2: Use the Table Editor](#)
 - [Step 3: Finish Editing](#)
- [Related articles](#)
- [Can't find information?](#)

Step-by-step

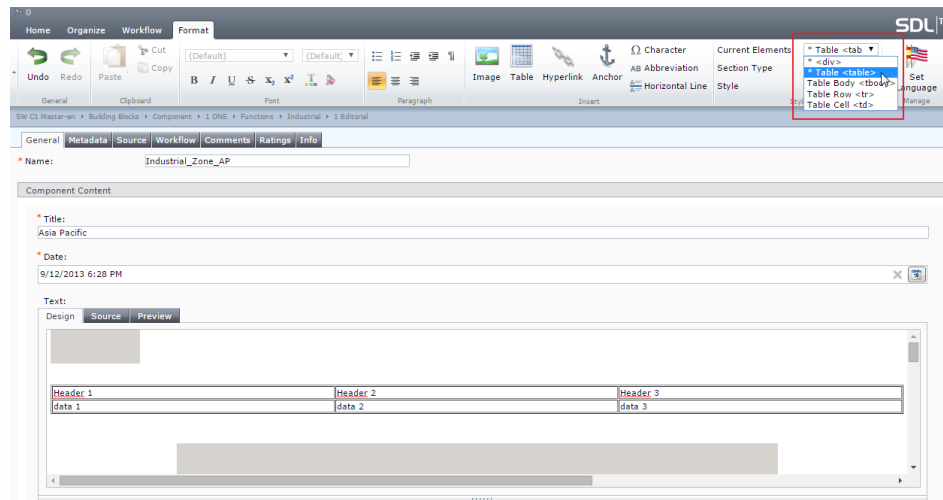
Step 1: Access the Table Editor

Open the concerned component, using the [Use the Advanced editing \(Open in form view\)](#).

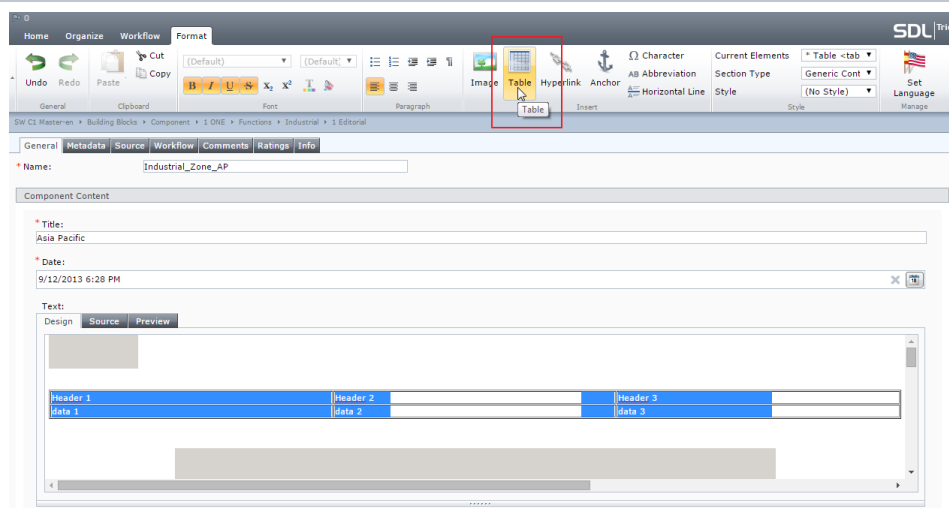
Click in any cell of the concerned table.



In the "Current Elements" list, select "** Table <table>".

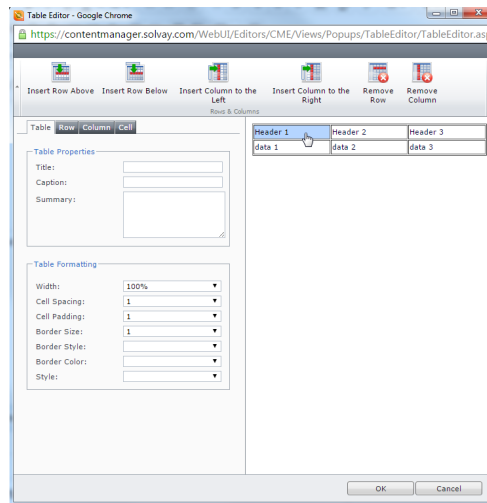


Press the "Table" button.

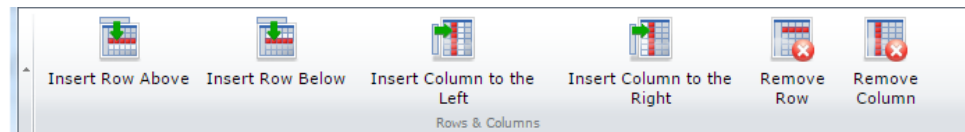


Step 2: Use the Table Editor

Click in a cell of the table.



Click one of the top buttons, to Insert or Remove rows or columns.



Use any other needed properties of this table editor.

Step 3: Finish Editing

Press "OK" to leave the Table Editor

Refer to the [Advanced editing \(open in form view\) article, steps 2 and 3](#), to properly finish the editing.

Related articles

Can't find information?

Related docs

- [Web support contact](#)