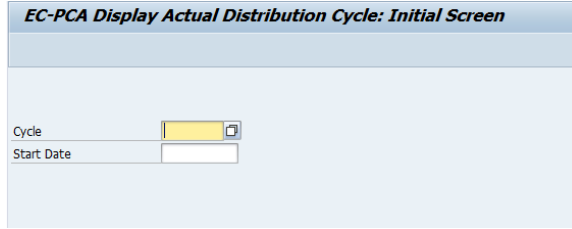


4KE3 - Display Profit Center Distribution Cycle

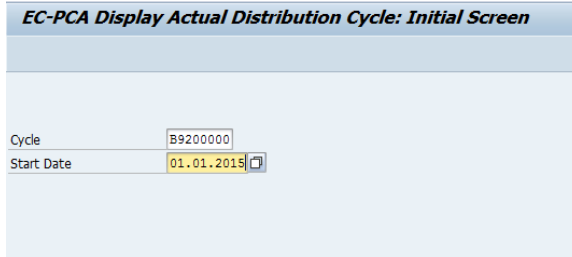
STEP 1

Start the transaction using transaction code 4KE3



STEP 2

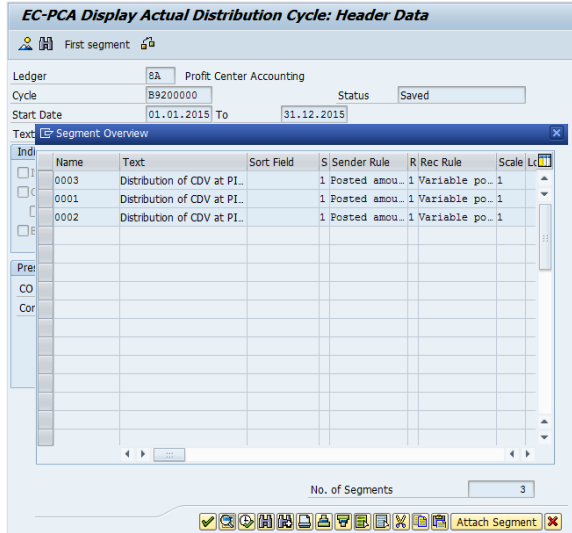
Enter the cycle code and the starting date



STEP 3

Open the Segment Overview dialog box by clicking on

By double clicking on one line you can select a segment and the details of the segment are displayed.



STEP 4

After select a segment you can use the buttons to display the next or the previous segments

