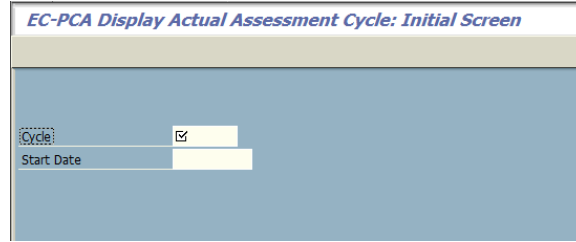


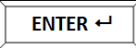
3KE3 - Display Profit Center Assessment Cycle

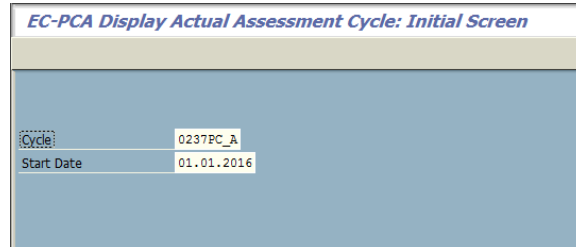
STEP 1

Start the transaction using transaction code 3KE3





STEP 2

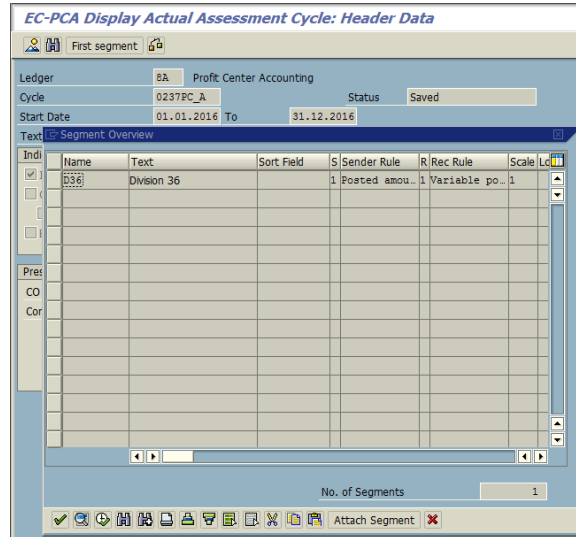
Enter the cycle code and the starting data and 





STEP 3

Open the Segment Overview dialog box by clicking on 

 By double clicking on one line you can select a segment and the details of the segment are displayed.



STEP 4

After select a segment you can use the buttons   to display the next or the previous segments

