
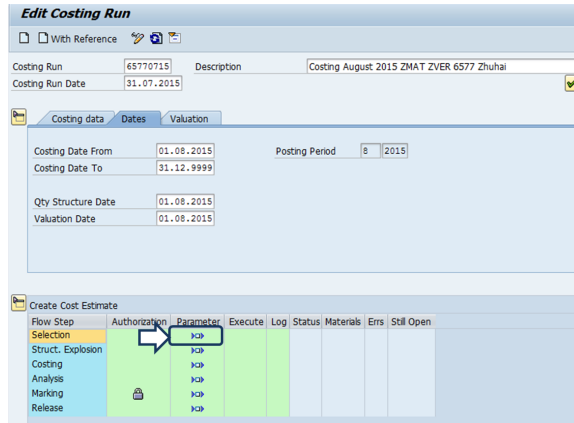


Costing Run - 1-Selection

STEP 1


The date of the first day of the cycle appears. To avoid any problems, calculation must remain until 31.12.9999.


The cycle starts with the selection of the materials that are costed. Click on  in the column « Parameter » / line « Selection »

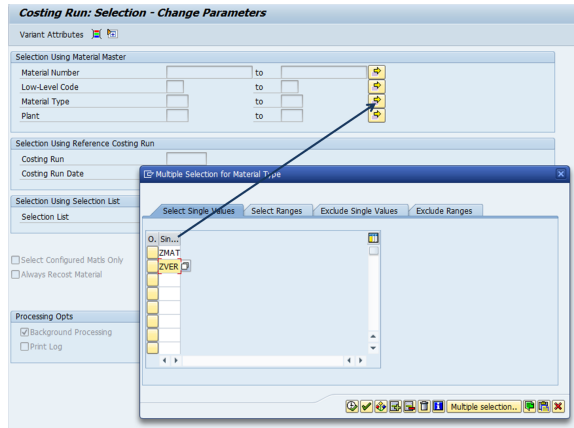


STEP 2

A new screen appears


1. Click on  beside Material Type
2. Enter the Material type :
 - **ZMAT** : Finished product & RM & SF
 - **ZVER** : Packaging

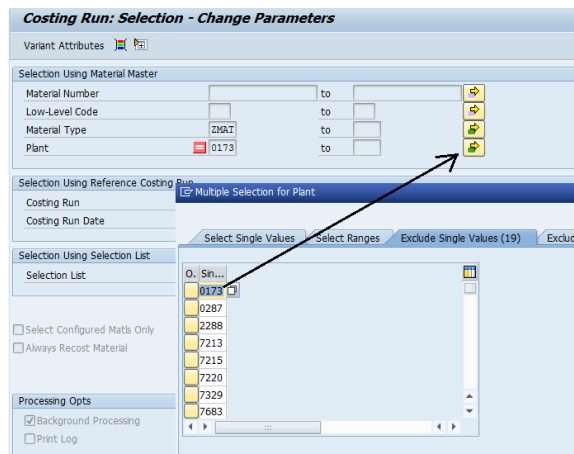
and execute 



STEP 3


In the same screen update the plants:

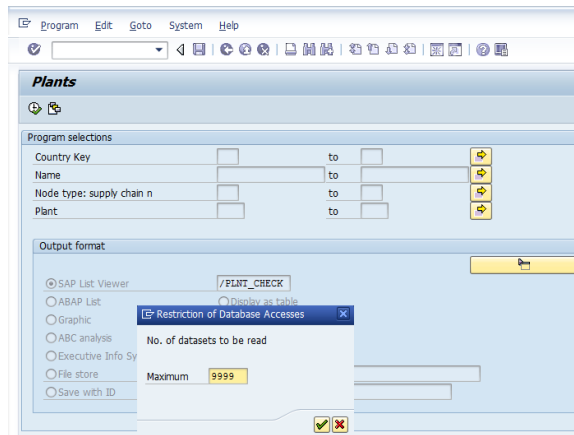
1. Click on  beside Plant
2. In tab Exclude single values
3. Add the plants from **SQ00** in tab excludes



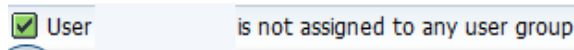
STEP 4

To remove Trading Plants (Négoce /NDIR) from WP1 Costing Run the following selections must be performed:

1. Go to **SQ00**, user group "**Costing**", choose the Query "**PLAN TS**" and execute 
2. In case you get an error message saying that your User is not assigned to any User Group, go to Environment -> Work areas and choose Standard area. After go to Edit -> Other User Group -> Costing.
3. Select Layout **/PLNT_CHECK** and confirm for your scope if Plants listed are excluded from **CK40N** parameters.



2



Conclusion: The Plants should be included/added to the already existing exclude list in CK40N (do not delete the Plants already in the List).

3

Plants


Plnt	Name 1	Rg	Region (State, Provi	Cty	Nty	House number and street
7379	ZFR3 / Négoce BE			BE		
7330	ZFR3 / Négoce DE			DE	DC	
8107	ZFR3 / Négoce ES			ES		
7329	ZFR3 / Négoce FR	93	SEINE-ST-DENIS	FR	DC	
7360	ZFR3 / Négoce GB			GB	DC	
7390	ZFR3 / Négoce Hors UE			Q1	DC	
7353	ZFR3 / Négoce IT	MI	MILANO	IT	DC	VIA MILANO 78/80
7331	ZFR3 / Négoce NL			NL	DC	
7380	ZFR3 / Négoce UE			EU	DC	

STEP 5



Check Background Processing
and save

? Unknown Attachment





The message "Values of variant xxxx" appears

Go back by clicking 

Costing Run: Selection - Change Parameters

Variant Attributes  

Selection Using Material Master

Material Number to 
 Low-Level Code to 
 Material Type 
 Plant to 

Selection Using Reference Costing Run


Costing Run
 Costing Run Date


Selection Using Selection List

Selection List



Select Configured Matis Only
 Always Recost Material

Processing Opts

Background Processing 
 Print Log

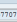
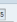
Values of variant 65770715735811 saved 

STEP 6

1. Click on  in the column « Execute » / line « Selection »
2. Check Start Immediately
3. Click on 

? Unknown Attachment

Edit Costing Run

With Reference  

Costing Run 65770715 Description Costing August 2015 ZMAT ZVER 6577 Zhuhai
 Costing Run Date 31.07.2015

Costing data Dates Valuation


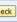
Costing Variant ZFD PC Costing Variant RCS
 Costing Version 1 Version w/o Customizing
 Controlling Area 2024 Rhoda Asia Pacific
 Company Code 6577 Zhuhai Sokay S&S Chem Co
 Transfer Control
 Server Group

Job name 65770715_20150731_0001226_00000
 Server Group

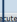

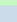


Date/time AfterJob After event With oper. mode Workday/time

Planned Start
 No Start After
 Start Immediately
 Restriction Date/Time

Change print param.

Check  Confirm 

Create Cost Estimate

Row Step	Authorization	Parameter	Execute	Log
Selection				
Struct. Explosion				
Costing				
Analysis				
Marking				
Release			