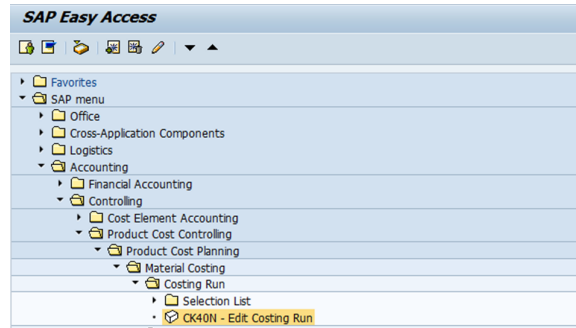
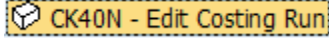


CK40N - Costing run analysis

STEP 1

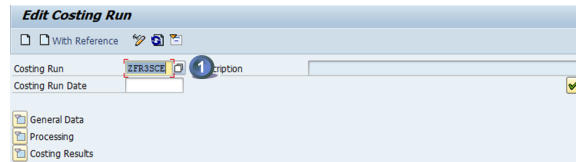
Start the transaction using the menu path or transaction code CK40N

Double-click



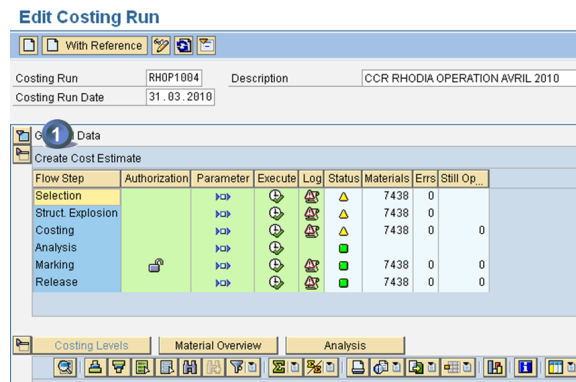
STEP 2

1. enter the costing run of the month and



STEP 3

1. Expand



STEP 4

All error messages must be cleared

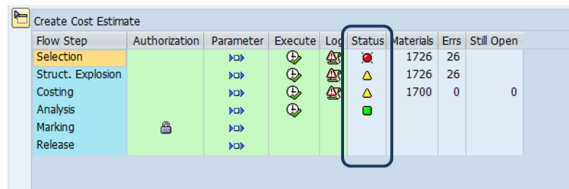
When there is a warning message, it often happens that there is a mistake in the costing. So even if it is not compulsory, it is recommended to check the warning messages and try to correct it.

Note: Sometimes, despite not having any error, some materials remain in column "Still Open". This is related with a technical issue linked to the mixed-costing materials. In order to correct the display table it's necessary to execute transaction CKSU.

STEP 1


WP1 + PF1

When there are error or warning messages, you must click on to analyse and clear them



STEP 2

WP1 + PF1

Click on  to have the list of messages

Costing Run: Selection - Log


Message log created on 26.12.2011


| Number of Messages Collected | |
|------------------------------|-----------|
| Information Messages | 1 |
| Warning Messages | 72 |
| Error Messages | 26 |
| Termination Messages | 0 |
| Total | 99 |


STEP 3

WP1 + PF1

1 - Type of message

 E Error messages, must be cleared

 W Warning messages, must be analysed and cleared as much as possible

 I Information messages

2 - Message code

3 - Plant code

4 - Material code

5 - Message description

Costing Run: Selection - Log

Log created on 26.12.2011

| Excep... | M... | M... | Plant | Material | P... | A... | Message Text |
|----------|------|------|-------|----------|------|------|--|
| ○○○ | W | 128 | 7811 | 32787 | 1 | CK | Material 32787 in plant 7811 has no accounting data |
| ○○○ | W | | | 77069 | 1 | CK | Material 77069 in plant 7811 has no accounting data |
| ○○○ | W | | | 115117 | 1 | CK | Material 115117 in plant 7811 has no accounting data |
| ○○○ | W | | 7818 | 49739 | 1 | CK | Material 49739 in plant 7818 has no accounting data |
| ○○○ | W | | 7819 | 110142 | 1 | CK | Material 110142 in plant 7819 has no accounting data |
| ○○○ | I | 172 | 7787 | 1615996 | 1 | CK | Material 1615996 in plant 7787: No cost est. exists -> ra... |
| ○○○ | E | 310 | 7714 | 68858 | 1 | CK | Material 68858 is marked for deletion |
| ○○○ | E | | | 19398 | 1 | CK | Material 19398 is marked for deletion |
| ○○○ | E | | | 40928 | 1 | CK | Material 40928 is marked for deletion |
| ○○○ | E | | | 50775 | 1 | CK | Material 50775 is marked for deletion |
| ○○○ | E | | | 66785 | 1 | CK | Material 66785 is marked for deletion |
| ○○○ | E | | | 101132 | 1 | CK | Material 101132 is marked for deletion |
| ○○○ | E | | | 101628 | 1 | CK | Material 101628 is marked for deletion |
| ○○○ | E | | 7779 | 66785 | 1 | CK | Material 66785 is marked for deletion |

STEP 4

WP1 + PF1

You can double-click on a message to have a more detailed description of the issue

Performance Assistant

Material 68858 is marked for deletion

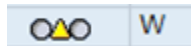
Message no. CK310

Diagnosis

Material 68858 was flagged for deletion internally. To delete this deletion flag, you have to change the indicator in the material master record.
[Change material master record](#)



- CK060 - Object was not costed
- CK249 - Cost component split for material not saved
- CK310 - Material is marked for deletion
- CK380 - No valid source of supply could be found
- CK468 - No price could be determined for subcontracting
- CK023 - No control record for Activity type CHEF/X332900700/ZZANO2 in version 000 / 2017 activity planning/qty planning
- CK354 - Material XXXX in plant YYY has material status Z4 : Material deleted
- CK430 - Missing formula in work center xxxxx
- CK862 - Material XXX in plant XXX does not contain any segment for in-house production



- CK053 - Deletion indicator set in material - plant
- CK054 - Deletion indicator set in material - valuation area
- CK080 - Material plant : BOM not active
- CK082 - Material plant: no suitable BOM found
- CK128 - Material in plant has no accounting data.
- CK382 - Material does not exist in withdrawal plant
- CK858 - No suitable or valid production version

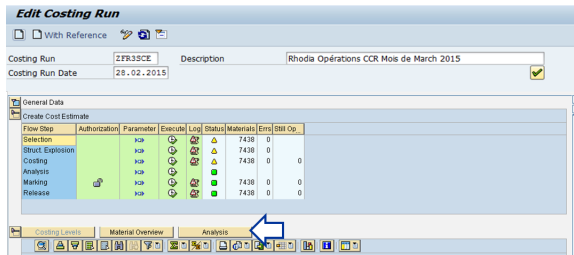
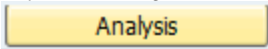
Workflow history

This view shows the 5 most recent entries. The complete workflow log is available from the 'Document Activity' menu item.

| Aug 14, 2024 | Actor | Type | Activity | Version |
|--------------|---|-------|---|---------|
| Published |  Gomes, Susana | State | changed state to Published at 1:24 pm | v13 |
| Draft |  Gomes, Susana | State | gave <i>Approvers</i> approval at 1:24 pm | |
| | | State | changed state to Draft at 1:24 pm | v13 |
| Oct 09, 2017 | | | | |
| For Review | PEREIRA DINIZ, Sandra | Edit | updated the page at 9:49 am | |
| | PEREIRA DINIZ, Sandra | State | changed state to For Review at 7:49 am | v12 |
| Jul 06, 2016 | | | | |
| Published | ROLLIER, Charlotte | State | changed state to Published at 4:12 pm | v11 |

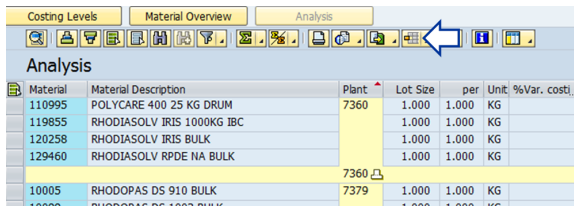
STEP 5

When errors are corrected and warning messages checked, costing analysis can begin. Click on



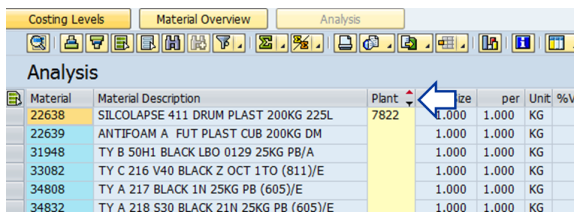
STEP 6

Select the variant. In this example, we are using the variant /IAC0102



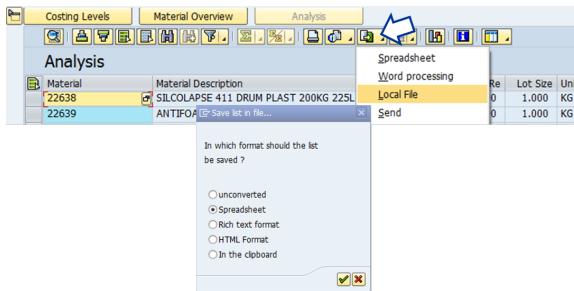
STEP 7

Filter the plant you are responsible for



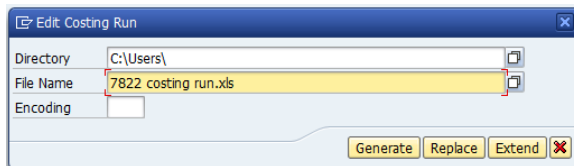
STEP 8

Save in excel : local file => spreadsheet



STEP 9

Enter the directory & the file name and generate the file



STEP 10

i All variances above a defined threshold must be commented. The threshold is defined by the FRA :

- Unit cost variance %
- Inventory revaluation value.

If the threshold is above +/- 10% at unit cost level or +/- 50 k€ at item inventory revaluation level should be authorized by RCOM.

Open the file

If:

- the unit variation is > 10% (or local threshold)
- or Anticipated reval is > 50 kEUR (or local threshold),

a deeper analysis is requested

| Material | Material description | Plant | Lot Size | per | Units | %Var. costing/MM | Anticip. reval | Total Stock | Val. MatMts | Costing RA | Var. costing/MM |
|----------|---|-------|----------|-------|-------|------------------|----------------|-------------|-------------|------------|-----------------|
| 60444 | TY A 226F NOIR 21H 25KG SP (65)E | 7822 | 1 000 | 1 000 | KG | -18,23 | | 0 | 1 990,48 | 2 353,40 | 362,92 |
| 60447 | TY A 226F NOIR 21H XXXX | 7822 | 1 000 | 1 000 | KG | -0,99 | | 0 | 1 941,18 | 1 922,04 | -19,14 |
| 60441 | MM N498 C ROUET SAC 25 KG | 7822 | 1 000 | 1 000 | KG | -2,83 | -36,34 | 167 | 7 685,96 | 7 458,91 | -227,65 |
| 60701 | TY A 226F NATUREL 25KG SP (65)E | 7822 | 1 000 | 1 000 | KG | -0,97 | -128,05 | 6 500 | 2 029,13 | 2 009,43 | -19,7 |
| 60838 | MM B650 C CANULE SAC 25 KG | 7822 | 1 000 | 1 000 | KG | -3,54 | -78,15 | 428,2 | 5 019,53 | 4 841,73 | -177,8 |
| 61075 | TY SX 11 BL NATUREL 25KG SP (65)E | 7822 | 1 000 | 1 000 | KG | | | 9 101,40 | 2 608,26 | 2 608,26 | |
| 61079 | TY SX 16 BL NATUREL OCT 110 CP8 (81)E | 7822 | 1 000 | 1 000 | KG | | | 14 893,29 | 795,75 | 795,75 | |
| 61118 | CAPROLACTAME (6%) VRAC | 7822 | 1 000 | 1 000 | KG | | | 0 | 5 157,50 | 3 422,12 | -1 735,38 |
| 64151 | MM B328 C CALECHE SAC 25 KG | 7822 | 1 000 | 1 000 | KG | 10,76 | 31,69 | 61 | 4 826,89 | 5 346,46 | 519,57 |
| 64158 | MM B338 C PRISON SAC 25 KG | 7822 | 1 000 | 1 000 | KG | 21,69 | 754,28 | 488,737 | 6 642,91 | 8 083,94 | 1 441,03 |
| 64235 | BASE DE NIGROSINE/SOLVANT NOIR 7 FUT | 7822 | 1 000 | 1 000 | KG | | | 65,624 | 2 159,92 | 4 587,65 | 2 427,73 |
| 64248 | OVYDE ZINC QUALITE NEIGE 305/5 25KG SAC | 7822 | 1 000 | 1 000 | KG | | 112,41 | | | | |

Validate the main variances in % & in value

In this example, the costing of the following materials 60444, 64151, 64158, 64235, 64248 have to be checked and validated

| Material | Material description | Plant | Lot Size | per | Units | %Var. costing/MM | Anticip. reval | Total Stock | Val. MatMts | Costing RA | Var. costing/MM |
|----------|---|-------|----------|-------|-------|------------------|----------------|-------------|-------------|------------|-----------------|
| 60444 | TY A 226F NOIR 21H 25KG SP (65)E | 7822 | 1 000 | 1 000 | KG | -18,23 | > 10 % | 0 | 1 990,48 | 2 353,40 | 362,92 |
| 60447 | TY A 226F NOIR 21H XXXX | 7822 | 1 000 | 1 000 | KG | -0,99 | | 0 | 1 941,18 | 1 922,04 | -19,14 |
| 60441 | MM N498 C ROUET SAC 25 KG | 7822 | 1 000 | 1 000 | KG | -2,83 | -36,34 | 167 | 7 685,96 | 7 458,91 | -227,65 |
| 60701 | TY A 226F NATUREL 25KG SP (65)E | 7822 | 1 000 | 1 000 | KG | -0,97 | -128,05 | 6 500 | 2 029,13 | 2 009,43 | -19,7 |
| 60838 | MM B650 C CANULE SAC 25 KG | 7822 | 1 000 | 1 000 | KG | -3,54 | -78,15 | 428,2 | 5 019,53 | 4 841,73 | -177,8 |
| 61075 | TY SX 11 BL NATUREL 25KG SP (65)E | 7822 | 1 000 | 1 000 | KG | | | 9 101,40 | 2 608,26 | 2 608,26 | |
| 61079 | TY SX 16 BL NATUREL OCT 110 CP8 (81)E | 7822 | 1 000 | 1 000 | KG | | | 14 893,29 | 795,75 | 795,75 | |
| 61118 | CAPROLACTAME (6%) VRAC | 7822 | 1 000 | 1 000 | KG | -33,65 | | 0 | 5 157,50 | 3 422,12 | -1 735,38 |
| 64151 | MM B328 C CALECHE SAC 25 KG | 7822 | 1 000 | 1 000 | KG | 10,76 | > 10 % | 61 | 4 826,89 | 5 346,46 | 519,57 |
| 64158 | MM B338 C PRISON SAC 25 KG | 7822 | 1 000 | 1 000 | KG | 21,69 | | 488,737 | 6 642,91 | 8 083,94 | 1 441,03 |
| 64235 | BASE DE NIGROSINE/SOLVANT NOIR 7 FUT | 7822 | 1 000 | 1 000 | KG | | | 65,624 | 2 159,92 | 4 587,65 | 2 427,73 |
| 64248 | OVYDE ZINC QUALITE NEIGE 305/5 25KG SAC | 7822 | 1 000 | 1 000 | KG | | 112,41 | | | | |

as the variance is above 10% or/and the revaluation above 50 k€

STEP 1

Ex : 64235 BASE DE NIGROSINE /SOLVANT NOIR 7 FUT

The MAP increased from 6 643 € to 8 083 €

- We have to validate the MAP (Moving Average Price) by checking purchase orders of the month.
- It can also help to check the purchase variance of this material (KE30) to define where does the increase come from.

| | |
|-------------|-----------|
| MAP end M-1 | MAP end M |
| 6 643 € | 8 083 € |

+ 1 441 €
+ 21,69 %

STEP 2

Display purchase orders with the transaction ME2M

Enter

- the material code & the plant
- the period

Purchasing Documents for Material

Choose...

Material: 64235 1 to

Plant: 7822 to

Purchasing organization: to

Scope of list: BEST

Selection parameters: to

Document type: to

Purchasing group: to

Item category: to

Account assignment category: to

Delivery date: 01.03.2010 2 to 31.03.2010

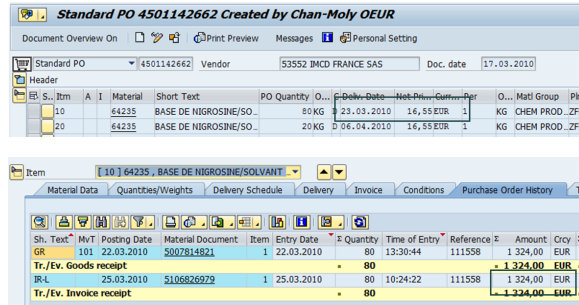
STEP 3

There is one purchase order to check.

=> Double-click on it

| PO | Type | Vendor | Name | Pgp | Order Date |
|---------|----------|--------|--------------------------------------|-------|------------|
| Item | Material | | Short Text | | Mat. Group |
| D I A | Plant | Sloc | Order Qty | Un | Net Price |
| | | | | | Curr. |
| | | | | | per Un |
| 4501142 | FR5 | 53552 | IMCD FRANCE SAS | FKK | 17.03.2010 |
| 0001 | 64235 | | BASE DE NIGROSINE/SOLVANT NOIR 7 FUT | 0451 | |
| | 7822 | FR59 | 80 KG | 16,55 | EUR |
| | | | Still to be delivered | 0 KG | 0,00 EUR |
| | | | Still to be invoiced | 0 KG | 0,00 EUR |
| 00020 | 64235 | | BASE DE NIGROSINE/SOLVANT NOIR 7 FUT | 0451 | |
| | 7822 | FR59 | 20 KG | 16,55 | EUR |
| | | | Still to be delivered | 0 KG | 0,00 EUR |
| | | | Still to be invoiced | 0 KG | 0,00 EUR |

In march, the purchase price is 16,55 € / KG



It corresponds to the price invoiced

= 1 324 € / 80 kg

= 16,55 € / kg

At the end of M-1, the MAP was 6,64 € / kg. As the purchase price of M is 16,55 € / kg, it is normal that the MAP increases in M.



If there is a mistake in the calculation of the new MAP due to an error in the purchase order, invoice price etc:

- Ask to correct the purchase order,
- If the MAP is still not correct => use the field Commercial 1 in view accounting 2 to correct it manually,
- Prepare a documentation for control IAC 01.02

Workflow history

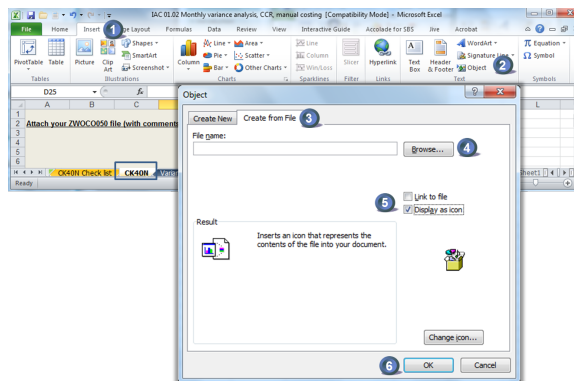
This view shows the 5 most recent entries. The complete workflow log is available from the 'Document Activity' menu item.

| Jun 13, 2016 | Actor | Type | Activity | Version |
|-----------------------------------|--|-------|--|---------|
| Published | Sylvain Michel Alexandre Pingont | State | changed state to Published at 2:02 pm (Space Initialization) | v6 |
| Draft | Sylvain Michel Alexandre Pingont | State | gave <i>Approvers</i> approval at 2:02 pm | |
| | | State | changed state to Draft at 2:02 pm | v6 |
| From Nov 20, 2015 to Feb 29, 2016 | | | | |
| | Alexandra Lepercq and ROLLIER, Charlotte | Edit | multiple updates from Alexandra Lepercq and R, Charlotte | ROLLIE |
| | ROLLIER, Charlotte | Edit | created the page at 6:05 pm | |

STEP 11

When the analysis is completed, insert the file with your comments in the file IAC 01.02 of the month (sheet "CK40N").

1. Select "insert"
2. Click on "Object"
3. Select "Create from File"
4. Click on "Browse" and select the file
5. Check "Display as icon"
6. Click on OK



Workflow history

This view shows the 5 most recent entries. The complete workflow log is available from the 'Document Activity' menu item.

| Oct 08, 2020 | Actor | Type | Activity | Version |
|--|--|-------|---|---------|
| Published | GONCALO, Ana Catarina | Edit | updated the page at 11:32 am | |
| | | State | changed state to Published at 9:32 am | v19 |
| Draft | GONCALO, Ana Catarina | State | gave <i>Approvers</i> approval at 9:32 am | |
| | | State | changed state to Draft at 9:32 am | v19 |
| Jun 13, 2016 | | | | |
| Published | Sylvain Michel Alexandre Pingont | State | changed state to Published at 2:02 pm (Space Initialization) | v18 |
| | | State | gave <i>Approvers</i> approval at 2:02 pm | |
| Draft | Sylvain Michel Alexandre Pingont | State | changed state to Draft at 2:02 pm | v18 |
| | | State | changed state to Draft at 2:02 pm | |
| From Nov 20, 2015 to Apr 05, 2016 | | | | |
| | Alexandra Lepercq and ROLLIER, Charlotte | Edit | multiple updates from Alexandra Lepercq and ROLLIER, Charlotte | |