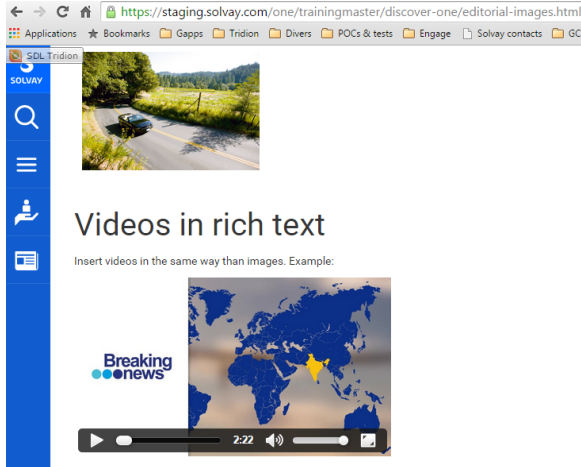


# Insert an image/video among an Editorial content

## Overview

Use it to insert a media among it rich text body. Here you can manage the display size.

Alternative: [Insert an image/video as an Editorial or Spotlight illustration](#).



## Table of contents

- [Overview](#)
- [Table of contents](#)
- [Step-by-step](#)
  - [Step 1: Place your cursor](#)
  - [Step 2: Browse and insert the media](#)
  - [Step 3: Adjust the dimension](#)
  - [Step 3: Finish editing](#)
- [Related articles](#)
- [Can't find information?](#)

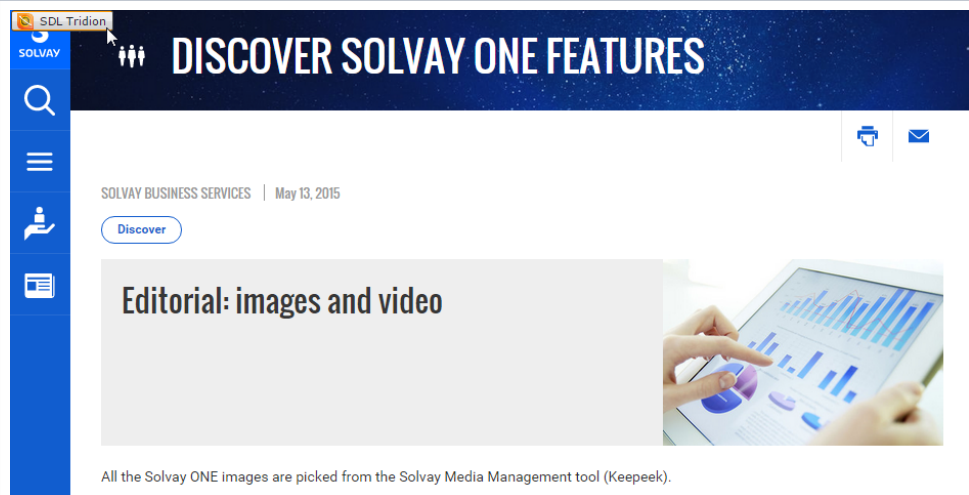
### Pre-requisite

Before to proceed, we assume that your concerned image /video is published in keepeek ([Import](#), [Locate](#), [Edit and Publish files](#), [\(Obsolete\) 2. Index](#) and [\(Obsolete\) 3. Classify](#)).

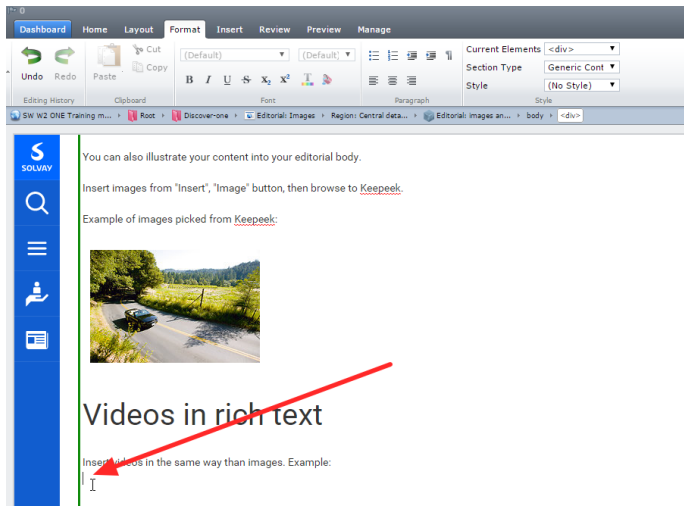
## Step-by-step

### Step 1: Place your cursor

1. If needed, activate SDL Tridion.

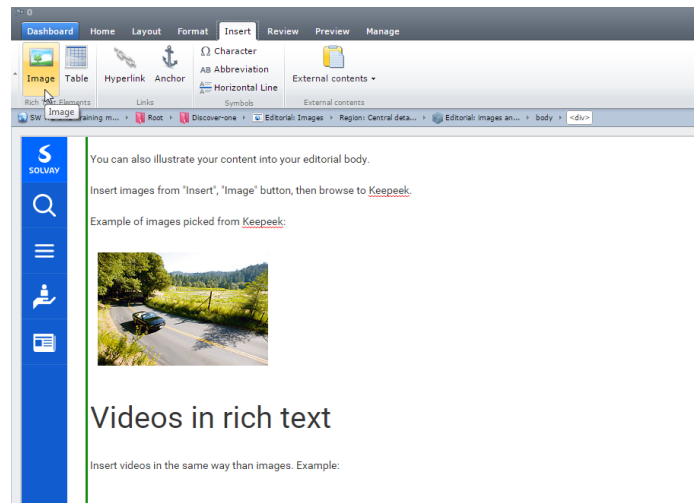


2. Click into your Editorial rich text to get the cursor where you need to insert the media.



## Step 2: Browse and insert the media

1. Reach the "Insert" toolbar tab, then press the "Image" button.

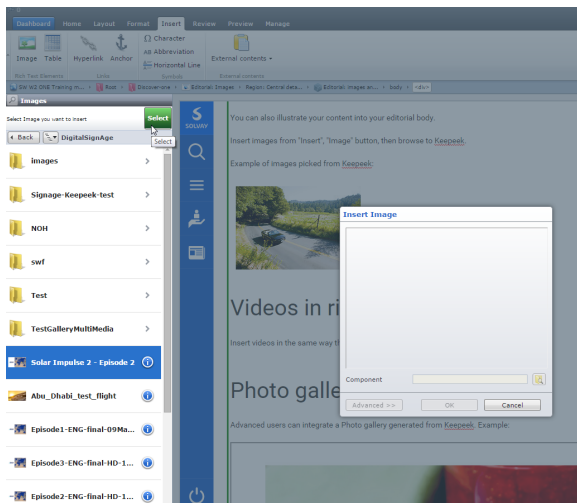


2. Browse Keepeek to the folder where is your media stored, select it then press the "Insert" button.



### Don't find your media?

See [Why can I not find the image/video I need, in spite of I identified it on Keepeek side?](#)



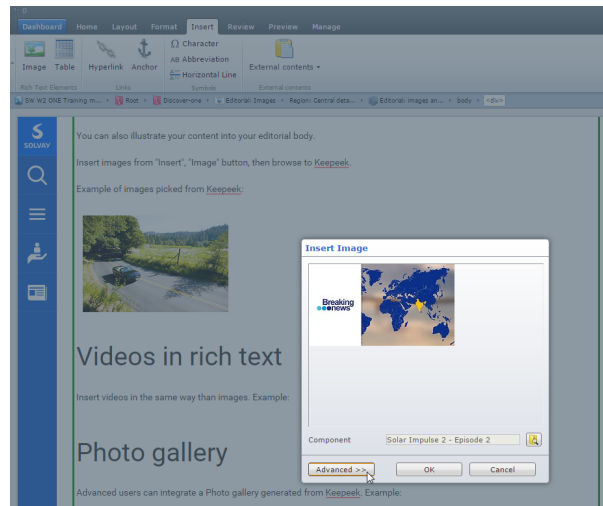
## Step 3: Adjust the dimension



### Adjust the dimension of an ever added media

To access this "Insert image" window from an ever added media, you must select it (click beside, then highlight it), then press again "Insert" > "Image", as if you wanted to insert a new media. Only the media have to be selected (nor space, nor any other character).

1. The default width and height are 224 pixels maximum. You certainly need to enlarge it. To proceed, click the "Advanced" button.



2. Adjust the Width and/or Height, then press OK



### Preserve the proportion

Before changing any value here, ensure the "Proportion" option is ticked.



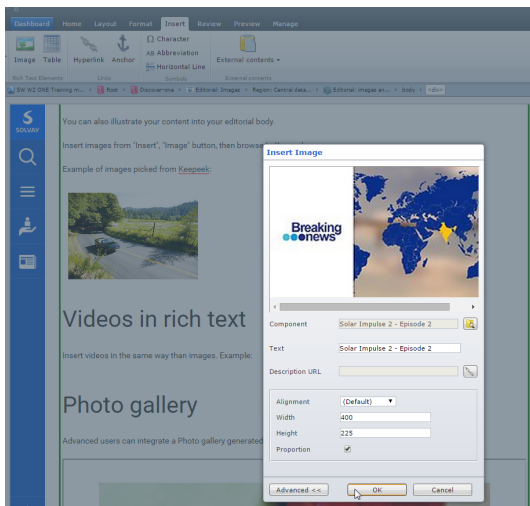
### Which width?

We recommend to use a 400px width for videos. Do not try to "fit" all of the available width: the Solvay ONE design is responsive, the available width is different on every contexts (browser window size, monitor resolution, desktop or mobile phone, etc.). In addition, the video player can be full screened at your visitors demand.



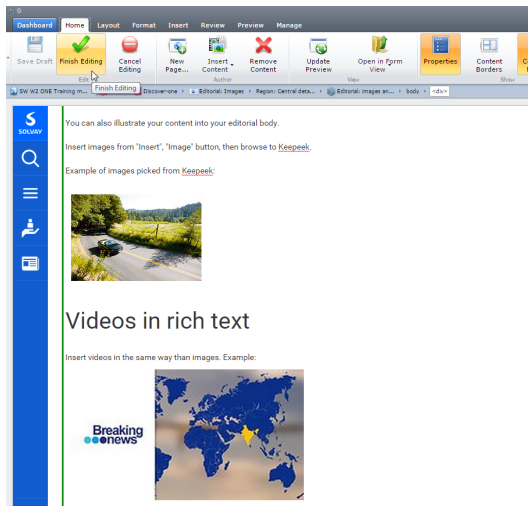
### Lots of pixels?

The media may be shaded in Edit mode, but if the media in Keepeek have a sufficient dimension (not lower than the one you choosed in Solvay ONE side), continue this process, you will see that the staging (and Live) is then asking Keepeek to provide a better quality image.

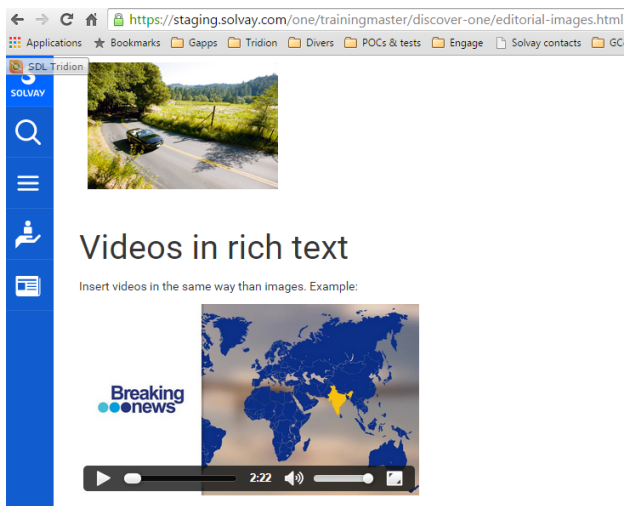


## Step 3: Finish editing

1. Press "Finish Editing" to save the change and republish it in Staging.



2. Some seconds later, press "Dashboard", then "Exit" to check the result in Staging.



## Related articles

## Can't find information?

### Related docs

- [Web support contact](#)