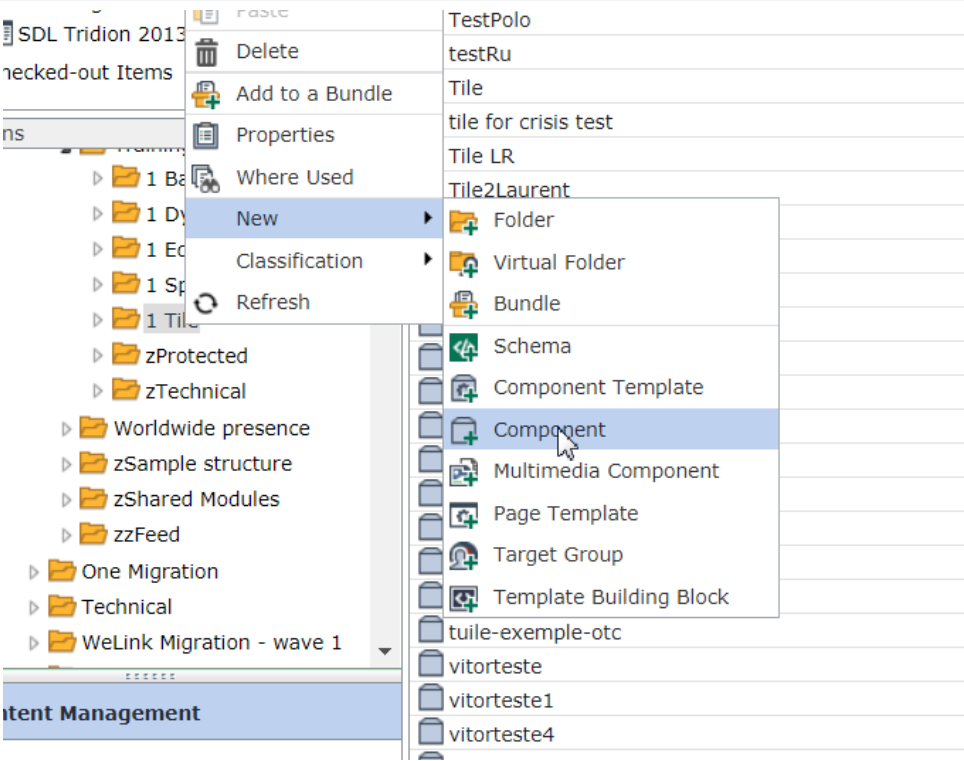
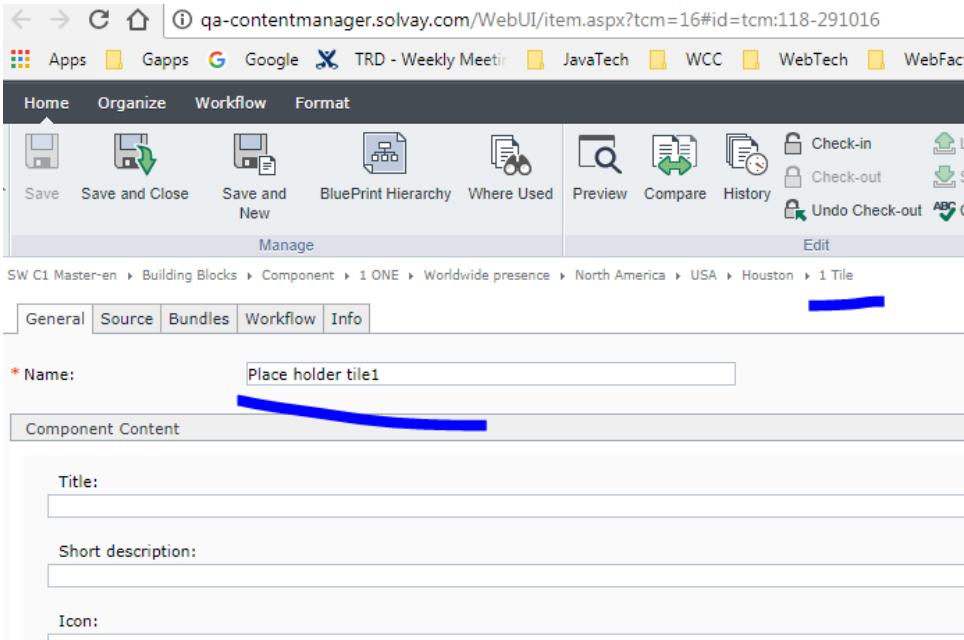


How to create a tile in BO and use them in FO(XPM):

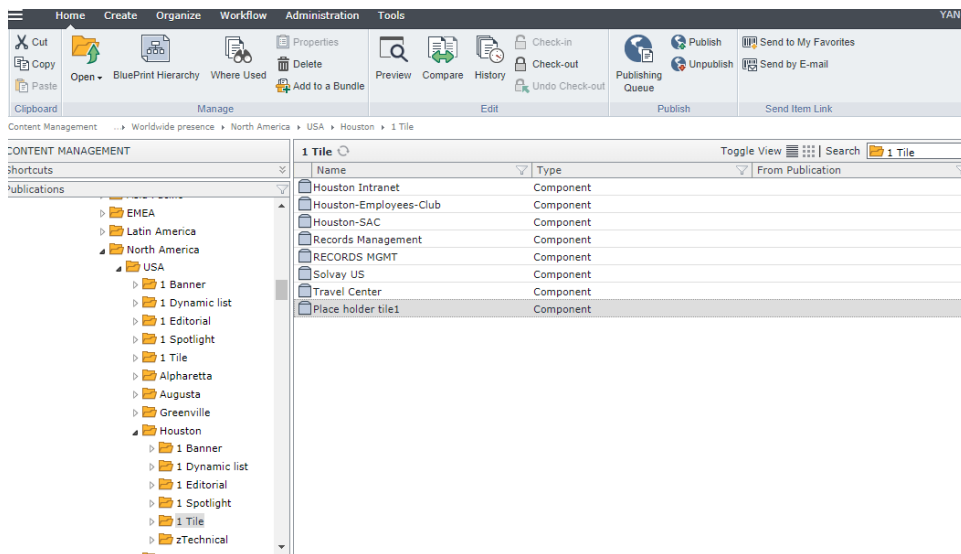
1. Open BO and navigate to your Tile folder of your space (link) (It's windows explorer like UI and i pretty sure you will not lost, the only thing you need to do is bookmark it in your browser for future access for your tile if you like to create more.



2. Use your right click and create component (tile) like you doing to create document in your google drive, just give a **name** which you needed and a **tag** to identify your space, save and close.



3. check your "Tile"



4. Continue to using your FO (XPM) ad you are doing right now but use the "Insert" rather using "Create and insert", navigate(or search) to your Tile and drag and drop your tile to your page. the wiki page (Tile - create new) clearly demonstrate how you can use the insert feature, which already covered by the User on board training.

