

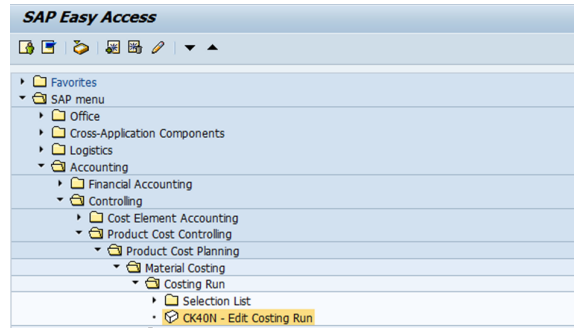
# CK40N - Create a costing run

## STEP 1

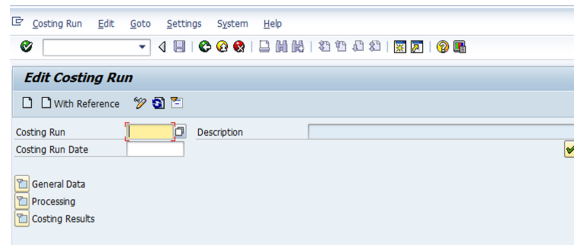
Start the transaction using the menu path or transaction code CK40N

Double-click

**CK40N - Edit Costing Run**



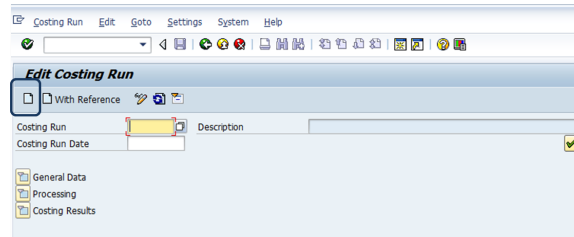
**i** Edit Costing Run : Initial Screen



## STEP 2

Create the costing run by clicking on

**? Unknown Attachment**



## STEP 3

Enter :

1. **Costing run code** : CCCCSCCE
  - CCCC = Company code
  - SCE - Standard cost estimate
2. **Description** : CCCC Name company Month Year
3. **Costing Run Date** : Last day of the month preceding the cycle
4. **Costing variant** : ZFO (ZEP in Korea, Z25 in Brazil)
5. **Costing version** : 1
6. **Controlling area**
7. **Company code**

