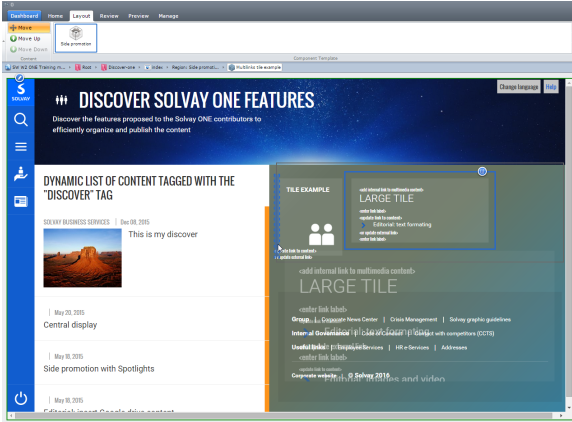


Move a component

Overview

You can move a component in a page, to place it before, after, upper or lower another component of the region, or to move it to another region (fully change its place into the page, adapting its design).

In this step-by-step guide, the example is taken on a Solvay ONE tile moving, but the process is precisely the same for any component of a page.



Example: Moving a tile from the right to the top left position

Table of contents

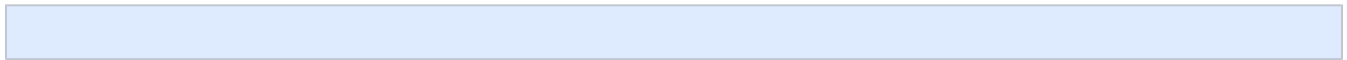
- [Overview](#)
- [Table of contents](#)
- [Step-by-step](#)
- [Related articles](#)
- [Can't find information?](#)



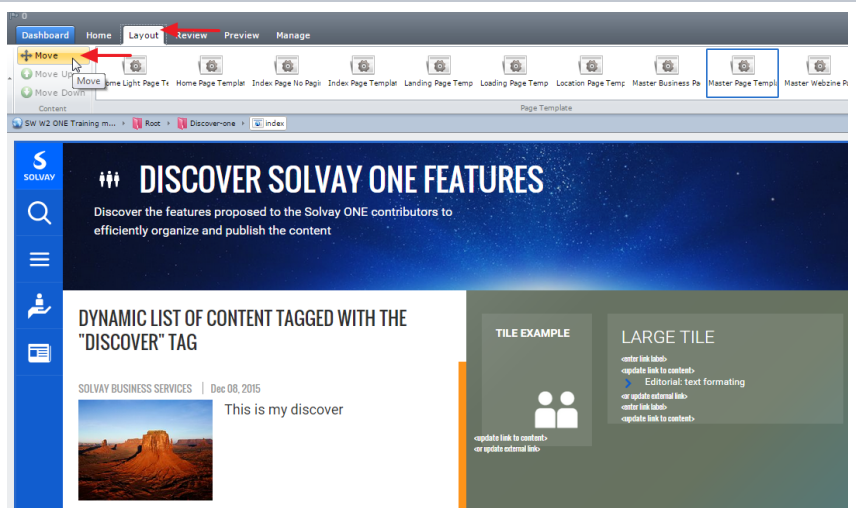
Alternative solution

An alternative solution applies well to Solvay ONE Tiles moving: [Move a component \(using Advanced page editing\)](#)

Step-by-step



1. Click the "Layout" toolbar tab, then click "Move"

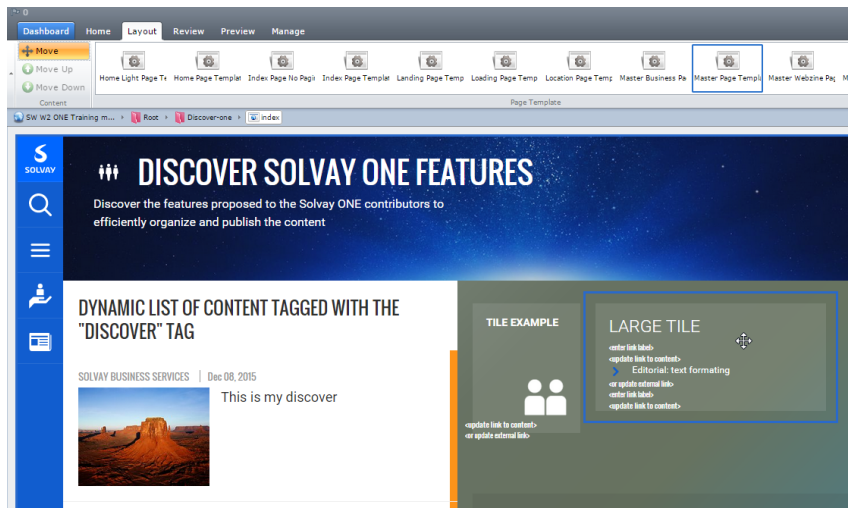


2. Hover over the component you need to move.



Pointer turns



Then your pointer should change to multi-directional arrows

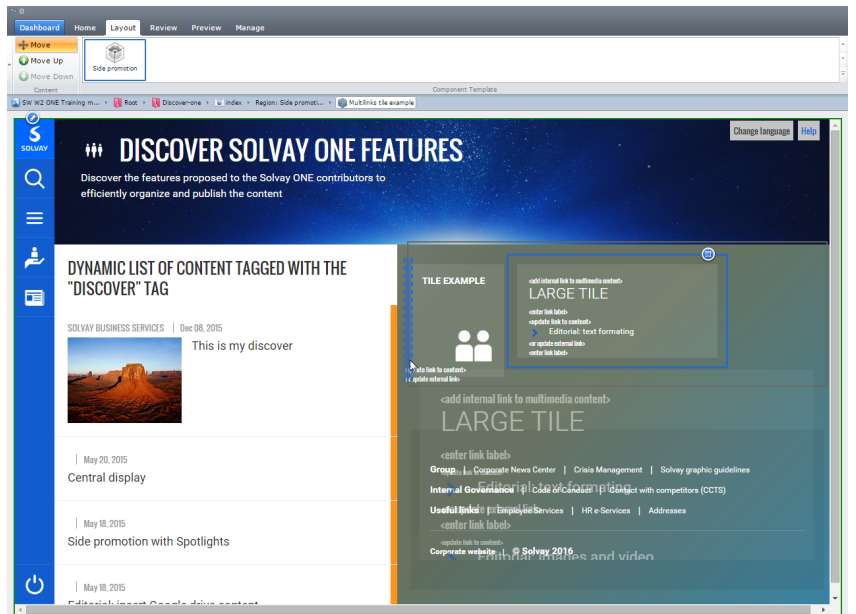


3. Drag this component, then reach an available zone to drop your component in.

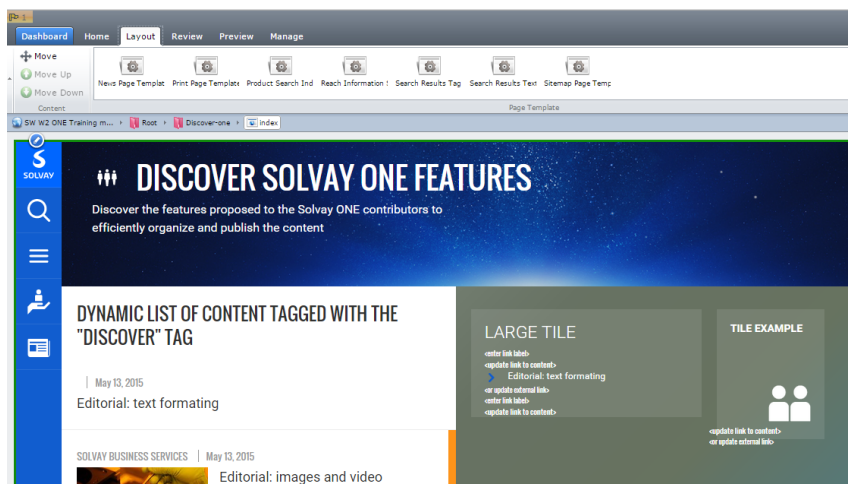


Where to drop?

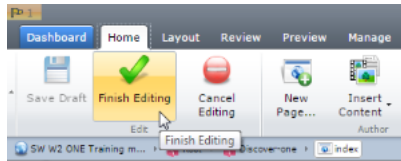
While releasing the mouse button, your pointer has to be into an available zone, turning from  to .



4. Wait for the page reloads, until it displays the component in the chosen position.



5. Click the "Home" toolbar tab, then "Finish Editing" to save your change and publish it in Staging.



Related articles

Can't find information?

Related docs

- [Web support contact](#)