

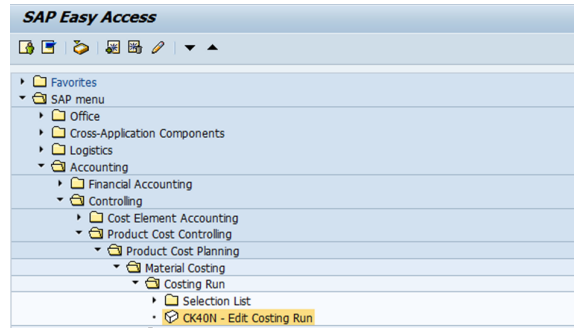
CK40N - Create a costing run

STEP 1

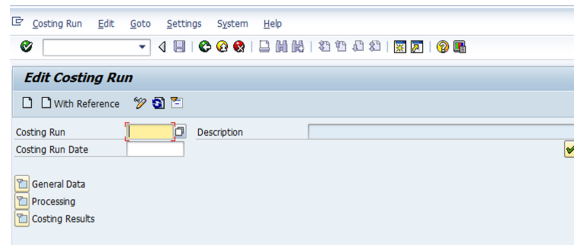
Start the transaction using the menu path or transaction code CK40N

Double-click

CK40N - Edit Costing Run



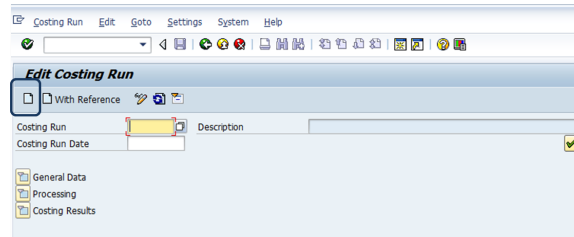
i Edit Costing Run : Initial Screen



STEP 2

Create the costing run by clicking on

? Unknown Attachment



STEP 3

Enter :

1. **Costing run code** : CCCCSCCE
 - CCCC = Company code
 - SCE - Standard cost estimate
2. **Description** : CCCC Name company Month Year
3. **Costing Run Date** : Last day of the month preceding the cycle
4. **Costing variant** : ZFO (ZEP in Korea, Z25 in Brazil)
5. **Costing version** : 1
6. **Controlling area**
7. **Company code**

