

GA717 - No receiver tracing factors defined



You specified "Fixed values", "Fixed portions", or "Fixed percentages" in determining tracing factors for receivers in cycle V1 , segment V2. However, you forgot to define these tracing factors.

Example

You specified "Fixed values", "Fixed portions", or "Fixed percentages" in determining tracing factors for receivers in cycle Z0266062-B, segment 0007. However, you forgot to define these tracing factors.

What to do ?

1. Check the definition of segment **0007** in cycle **6062-B** and define the receiver tracing factors

2. Open the cycle 6062-B, segment 7

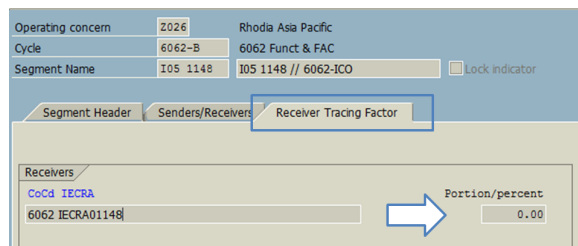
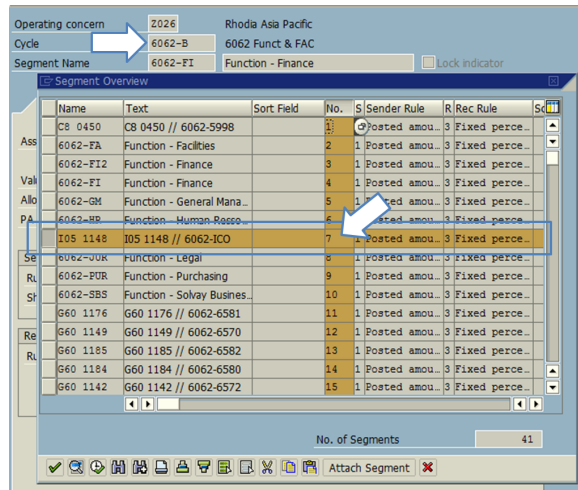
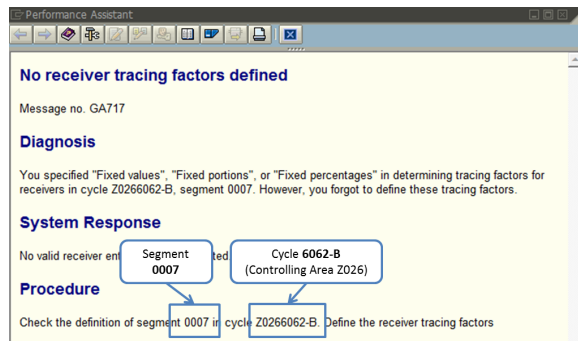
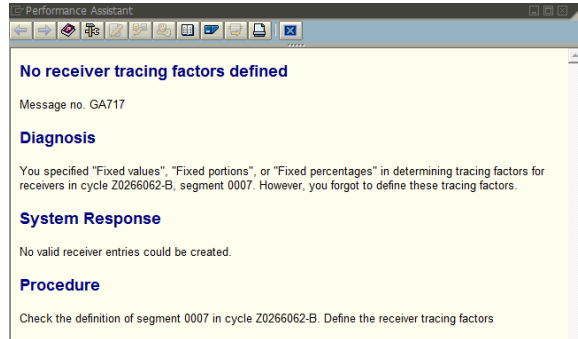
3. Go to the tab

Receiver Tracing Factor



The field Portion/percent was not informed

4. Change the Portion/percent and save



Operating concern	2026	Rhodia Asia Pacific
Cycle	6062-B	6062 Funct & FAC
Segment Name	I05 1148	I05 1148 // 6062-ICO <input type="checkbox"/> Lock indicator

Segment Header Senders/Receivers Receiver Tracing Factor

Receivers	
CoCd IECRA	Portion/percent
6062 IECRA01148	100

