

GA721 - A sender is credited by more than 100 %

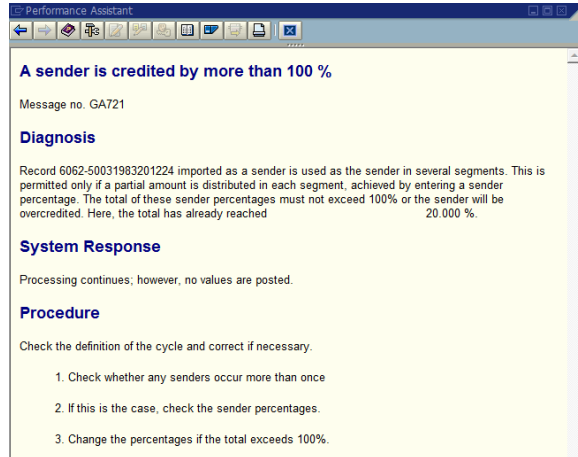


Record V1 imported as a sender is used as the sender in several segments. This is permitted only if a partial amount is distributed in each segment, achieved by entering a sender percentage.

The total of these sender percentages must not exceed 100% or the sender will be overcredited. Here, the total has already reached V2 %.

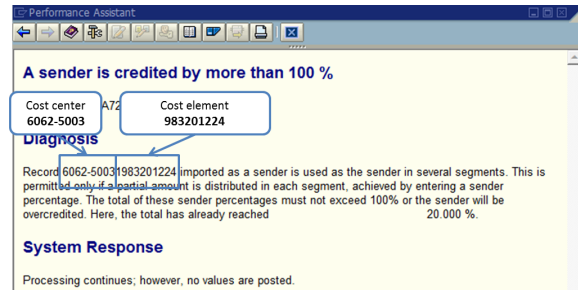
Example



Record 6062-50031983201224 imported as a sender is used as the sender in several segments. This is permitted only if a partial amount is distributed in each segment, achieved by entering a sender percentage. The total of these sender percentages must not exceed 100% or the sender will be overcredited. Here, the total has already reached 20.000 %.

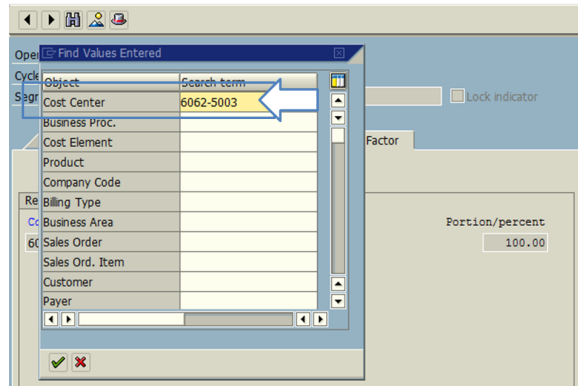


What to do ?

1. Display the settlement of the cost center **6062-5003** with the sender cost element **983201224**



2. Open the cycle and click  to find in which segment the cost center 6062-5003 is included and click 



3. The cost center is included in 2 segments & the cost element 983201224 is probably a sender cost element in both segment.

