
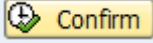
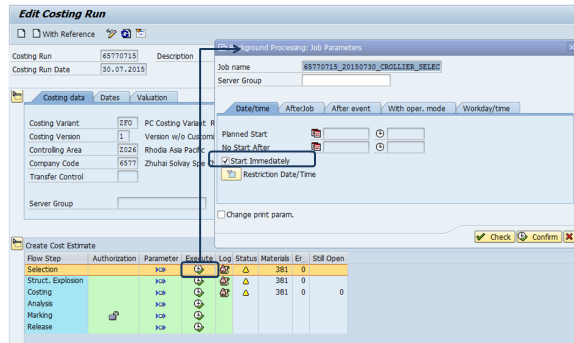


CK40N - Recalculate the standard cost estimates



If corrective actions have been taken, the costing run must be re executed

STEP 1

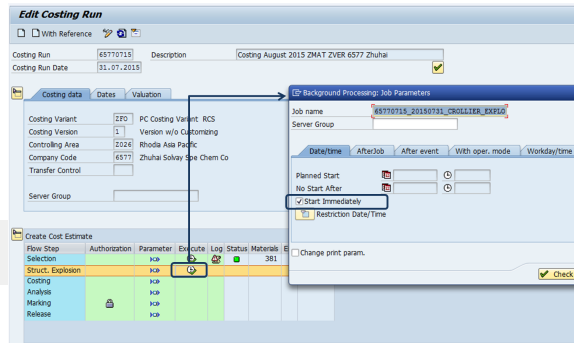
1. Click on  in the column « Execute » / line « Selection »
2. Check Start Immediately
3. Click on 





STEP 2

1. Click on  in the column « Execute » / line « Struct explosion »
2. Check Start Immediately
3. Click on 

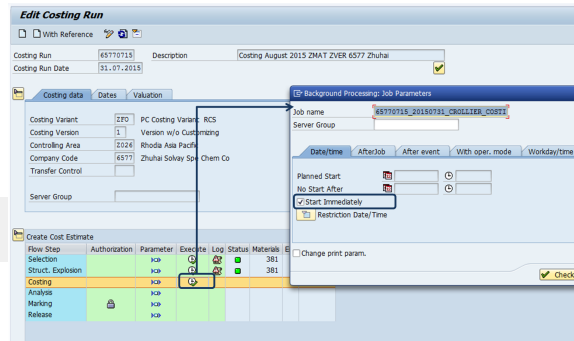
? Unknown Attachment




STEP 3

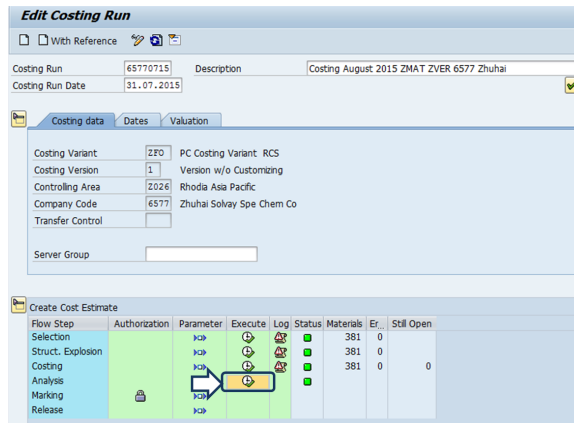
1. Click on  in the column « Execute » / line « Costing »
2. Check Start Immediately
3. Click on 

? Unknown Attachment



STEP 4

- Click on  in the column « Execute » / line « Analysis »



Workflow history

This view shows the 5 most recent entries. The complete workflow log is available from the 'Document Activity' menu item.

Jul 06, 2016	Actor	Type	Activity	Version
Published	ROLLIER, Charlotte	State	changed state to Published at 4:13 pm	v12
To be approved	ROLLIER, Charlotte	State	gave <i>Approvers</i> approval at 4:13 pm	
		State	changed expiry date to '11 Jul, 2016 04:12 pm' at 4:13 pm	
		State	changed state to To be approved at 4:12 pm	v12
For Review	ROLLIER, Charlotte	State	gave <i>Reviewers</i> approval at 4:12 pm	
		State	changed expiry date to '11 Jul, 2016 04:12 pm' at 4:12 pm	
		State	changed state to For Review at 4:12 pm	v12
Draft	ROLLIER, Charlotte	State	changed state to Draft at 4:12 pm	v12
From Sept 09, 2015 to Mar 11, 2016				
Approved	Alexandra Lepercq and ROLLIER, Charlotte	Edit	multiple updates from Alexandra Lepercq and ROLLIER, Charlotte	