
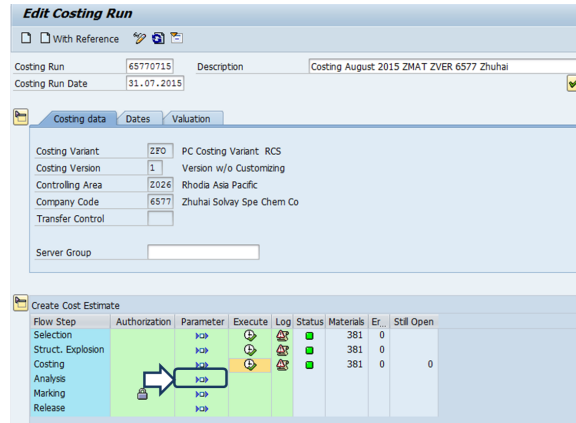


# Costing Run - 4-Analysis

## STEP 1

The cycle continues with the analysis of the calculation:

Click on the icon  of column **Parameter** / line **Analysis**

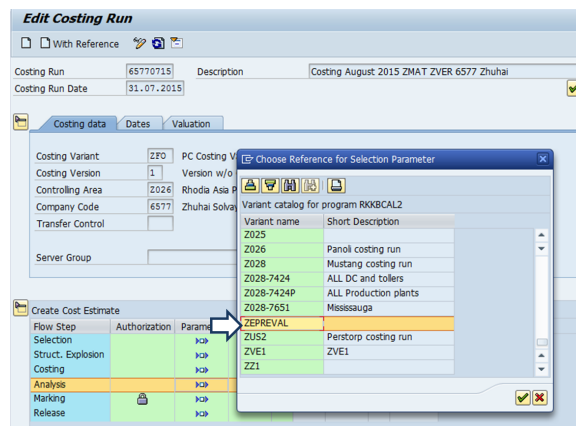


## STEP 2

A new screen appears

Select your variant according to your company.

- Select the variant "ZEPREVAL" for example.



## STEP 3

A new screen appears

1. Enter the currency = 1 (currency of the company)
2. Layout: **SAP03** (It has to be created previously by the user)

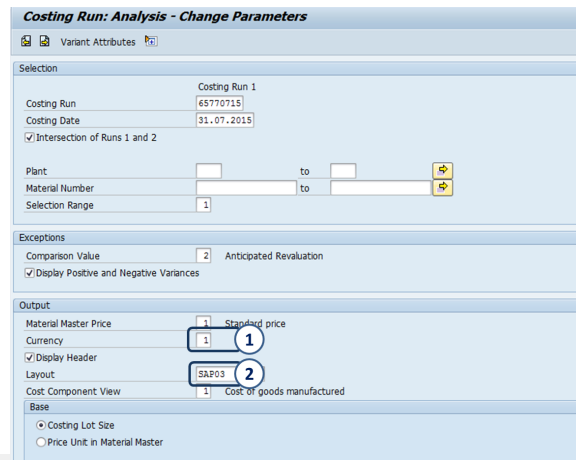
Save

 Unknown Attachment


A message appears : "values of variant xxxx saved"

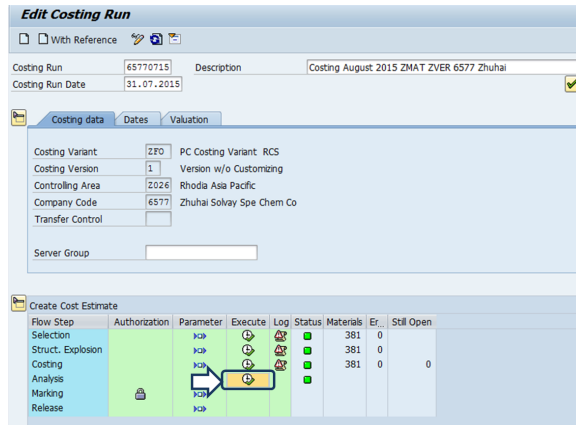
- Go back by clicking

 Unknown Attachment



## STEP 4

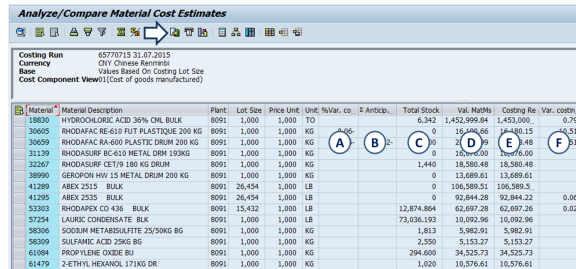
Click on  in the column **Execute /**  
line **Analysis**



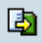
**STEP 5**

The report is displayed with the list of material codes & plants

- $A = F / D =$  Variation in %
- $B = C \times F =$  Anticipated revaluation
- $C =$  Total stock (quantity)
- $D =$  Standard costing M
- $E =$  Standard costing M+1
- $F = E - D =$  Costing variation

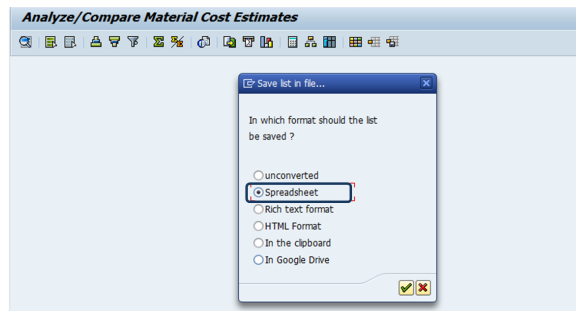


Material	Material Description	Plant	Lot Size	Price Unit	Unit	%Var.	P. Anticip.	Total Stock	Val. MatM	Costing Re	Var. cost
18630	HYDROCHLORIC ACID 36% OHL BULK	8091	1,000	1,000	TO			6,342	1,452,999.94	1,453,000.	0.79
30695	RHODAFAC RE-610 PUT PLASTIQUE 200 KG	8091	1,000	1,000	KG			0	16,246.65	14,440.15	-14.51
30659	RHODAFAC RA-600 PLASTIC DRUM 200 KG	8091	1,000	1,000	KG			0	0	1,48	1.48
31139	RHODASURF BC-610 METAL DRM 193KG	8091	1,000	1,000	KG			0	10,000.00	10,000.00	0.00
32267	RHODASURF CET79 180 KG DRUM	8091	1,000	1,000	KG			1,440	18,380.48	18,380.48	0.00
38990	GEROPON HV 15 METAL DRUM 200 KG	8091	1,000	1,000	KG			0	13,689.61	13,689.61	0.00
41289	AREX 2515 BULK	8091	26,454	1,000	LB			0	106,389.51	106,389.51	0.00
41295	AREX 2535 BULK	8091	26,454	1,000	LB			0	92,844.28	92,844.22	0.06
53303	RHODAFAC CD 436 BULK	8091	15,432	1,000	LB			12,874.864	62,697.28	62,697.26	0.02
57254	LAURIC CONDENSATE BLK	8091	1,000	1,000	LB			73,036.193	10,092.96	10,092.96	0.00
58306	SODIUM METABISULFITE 25/50KG BG	8091	1,000	1,000	KG			1,813	5,962.91	5,962.91	0.00
58309	SULFAMIC ACID 25KG BG	8091	1,000	1,000	KG			2,959	5,153.27	5,153.27	0.00
61084	PROPYLENE OXIDE BU	8091	1,000	1,000	KG			294,600	34,525.73	34,525.73	0.00
61479	2-ETHYL HEXANOL 171KG DR	8091	1,000	1,000	KG			1,020	10,576.61	10,576.61	0.00

The report will be saved in excel by clicking on 

**STEP 6**

Check **Spreadsheet**



Enter the folder & the file name and

**Generate**

