

# ZWFA21A - Determination of Lowest Value

## STEP 1

Start the transaction ZWFA21A

**i** Determination of Lowest Value: Sales price determination: initial screen

## STEP 2

1. Enter the **company code**
2. **Key date**: Last day of the month
3. **Material type**: ZMAT - Raw materials & Finished goods
4. **Valuation class**:
  - Z130 : Trading goods products
  - Z150 : Finished products
5. **Sales organisation**: All sales organisation of the company
6. **Currency type**: Useless (all data in specific table are in local currency)
7. Uncheck **Exclude Cross company delivery**

## STEP 3

1. Click on "Valuation level"
2. Check "Company code"

and enter

## STEP 4

Click on

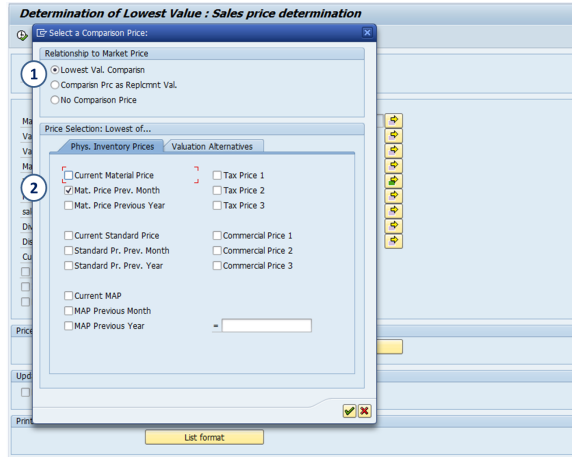
**Comparison price**

Select the relationship to Market Price = **Lowest val. Comparison**

Select the price used for the comparison:

- " Mat.Price Prev.Month " (material price previous month )

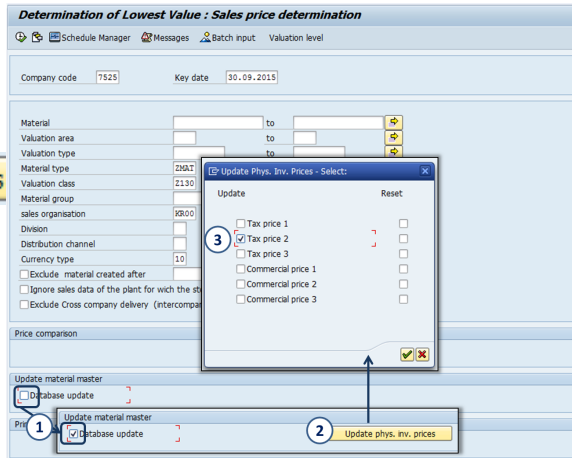
and enter



**STEP 5**

1. Check "Database update" and a new button appears.
2. Click on **Update phys. inv. prices**
3. Select "Tax price 2": field of the material master data in which the calculated price is saved

and enter



Then start the calculation by clicking on



Ignore the warning message

No material number interval entered. Please check

**Enter** ↵

by clicking on

**STEP 5**

The report is displayed

Determination of Lowest Value: Sales price determination part 2

ValA	Material	Val. Class.	Val. type	Material description	MatType	Tot. stock	Net Real value	Comparison price	Lowest price	per	Price Date	Price Source
7603	118799	Z150		TY W500A GREY 2980 500 KG BB/A	ZMAT	21,500 KG	4,092,000	3,397,332	3,397,332	/1,000	201506	COPA
7603	118950	Z150		PM01A-C32H2MX30 GREY 174NH-M 10KG BOX /A	ZMAT	200 KG	14,499,000	14,499,315	14,499,000	/1,000	201509	COPA
7603	118800	Z150		TY SX 216 V55 G-GREY 25 KG PB/A	ZMAT	1,800 KG	3,129,000	2,488,740	2,488,740	/1,000	201506	COPA
7603	119932	Z150		STABMID 24FE3 K BIG BAG 750 KG	ZMAT	38,158 TO	26,811,460	24,038,485	24,038,485	/ 10	201506	COPA
7603	119997	Z150		TY A 238SI CV28 BLACK 25 KG PB /A	ZMAT	75 KG	0,000	5,000	5,000	/1,000	201506	COPA
7603	121497	Z150		STAR AFX 216 V60 GREY 2327 25KG(ME) /A	ZMAT	00 KG	0,000	2,353	2,353	/ 1	201506	COPA
7603	124713	Z150		TY S 218 MV20 BLACK-E 750KG BB/A	ZMAT	21,000 KG	2,599	2,353	2,353	/ 1	201506	COPA
7603	125507	Z150		TY 2417IG4 BLACK 25KG(KP) PB/A	ZMAT	6,050 KG	3,972,000	2,849,472	2,849,472	/1,000	201506	COPA
7603	125508	Z150		TY C 216 V55 BLACK 25 KG PB/A	ZMAT	2,500 KG	3,008,000	2,119,186	2,119,186	/1,000	201506	COPA
7603	126165	Z150		TY SX 218L2 V50 BLACK 38N 25 KG PB/A	ZMAT	7,000 KG	3,849,000	2,716,118	2,716,118	/1,000	201506	COPA

1. **Material Master Data** & plant code
2. **Stock quantity** at the end of the month (execution date)
3. **Net Real value** most recent "net real value" on the "key date"
4. **Comparison price:** Price selected in the "comparison price" box (here "price on the previous month")
5. **Lowest price:** Lowest value of the two prices (3) & (4) followed by the price unit
6. **Price date:** Date of calculation of the price
7. **Price Source:** Origin of the price

