

# I settle Process Orders ( PP orders)

**Process:** Monthly costing and cost accounting closing

**Responsibility area:** Perform Costing Monthly Closing

- For **calculation of variances and posting**, don't forget that you have to run always the transactions in processing mode (**ZWFA76**, **KKS1**, **KKS2**, **ZWFA78**, **CO88** and **KO88**). If you ran it before in test mode, you will have to run it again in processing mode.
- For **WIP** (**ZWFAA07**, **KKAO** and **KKAX**) you have to run the transaction only in test mode, NOT in processing mode.
- For the **check of the process orders balance** (**KOC4**), it is preferable to launch it in background in order not to reduce the SAP performance for the other SAP users.
- The **error messages** that can appear when running each step can be checked in the spool log. Each one has a specific treatment, but only the ones generating inconsistencies require analysis. If necessary, Regional Cost Accounting FtO will provide additional support to reach a solution.

Scope

**WW** WP2

Frequency

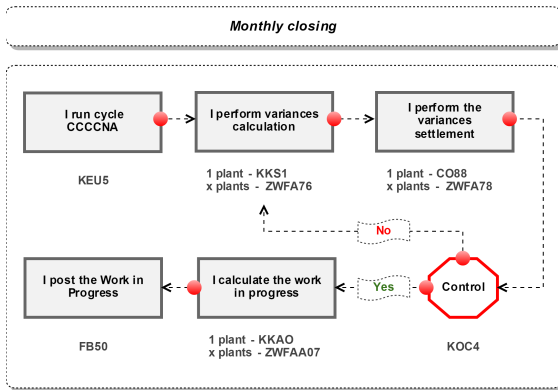
**M**

References

- [OP.008](#)
- [OP.008](#)

Attachments

N/A



xx << I settle Process Orders ( PP orders) >> xx

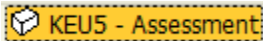
## Guideline

Before start processing the process orders costs you have to run cycle **CCCNA** in real mode in order to settle the "process order variances statistics" from cost center **CCCC-9201** (In some cases there are cost centers that start with **PPPP-9201** for historical reasons). At this stage only small amounts should be on cost center (rounding amounts). In case of high amounts in the balance should be analysed the reason before doing the settlement. For threshold please consider 3K€.

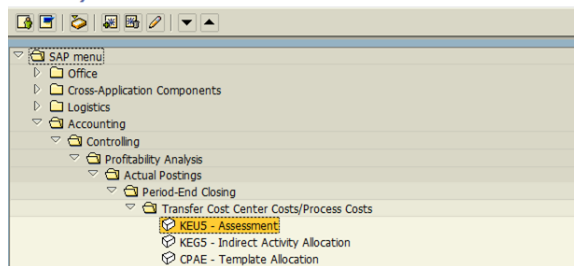
### STEP 1

Start the transaction using the menu path or transaction code **KEU5**

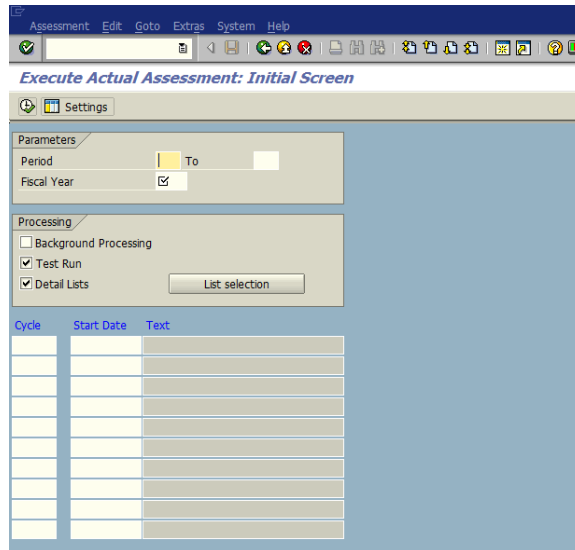
Double-click



### SAP Easy Access



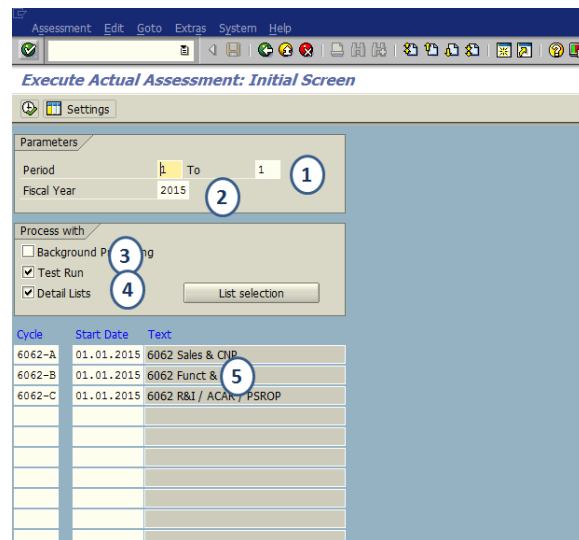
Execute Actual Assessment: Initial Screen



**STEP 2**

On the Execute Actual Assessment screen, make the following entries:

	Field name	User action and values	Comment
0	Controlling Area (dialog box)	Enter controlling area	Only needed if dialog box displays.
1	Periods	Enter one number in each field, for example, from 1 to 1	Jan =1, Dec=12
2	Year	Current year	
3	Test run		Use test run until the run is error-free
4	Detailed lists	x	
5	Cycle	Enter the cycle code => the Start Date comes when you click Enter	You can execute several cycles in one execution

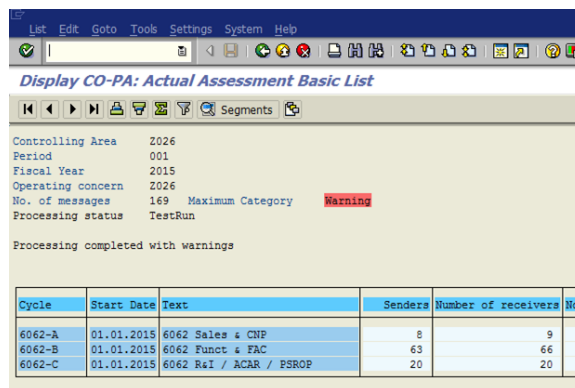


**STEP 3**

Execute

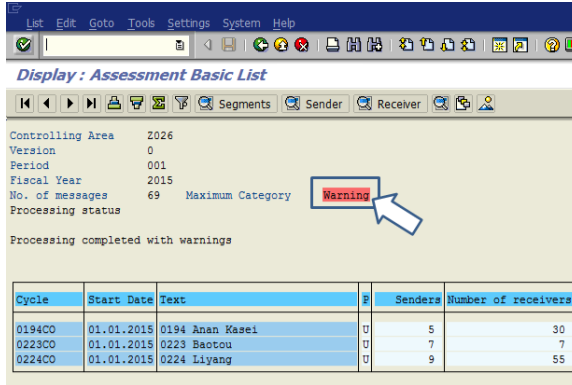


**!** It is compulsory to clear Error messages before saving the cycle

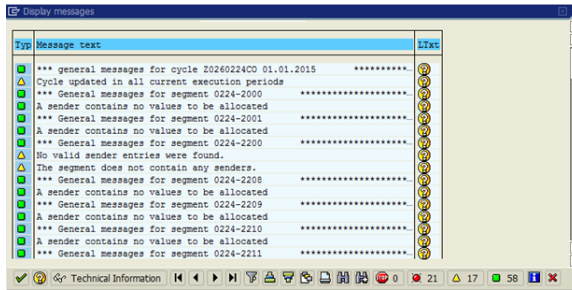


**i** Inform the person in charge of cycles maintenance if there are errors messages and wait until there are solved before starting the next step

Click **Warning** or **Errors** to display messages

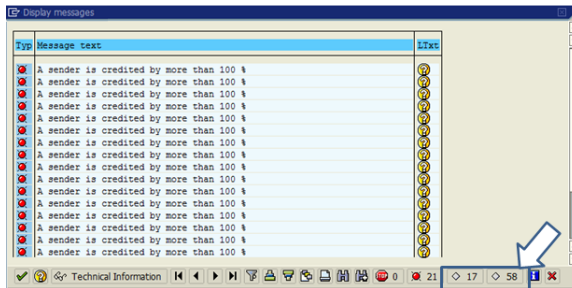


**i** Messages are displayed

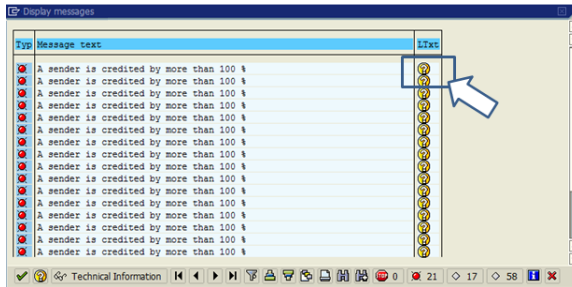


You can click:

: hide information  
and/or : warning messages



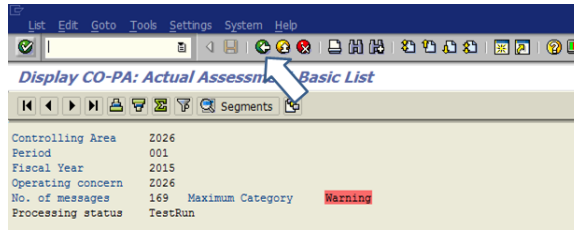
and then click to get more detail regarding the error message



- GA717 - No receiver tracing factors defined
- GA721 - A sender is credited by more than 100 %

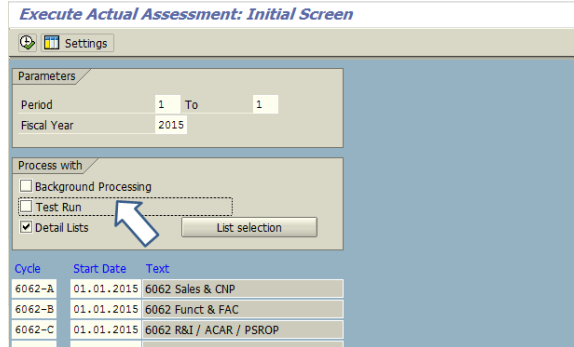
**STEP 4**

Go back to the initial screen by clicking 

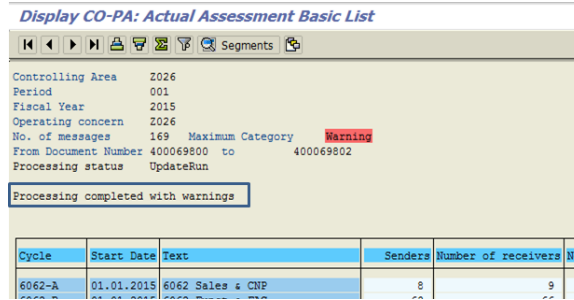


**STEP 5**

Untick the field "Test run" and execute 




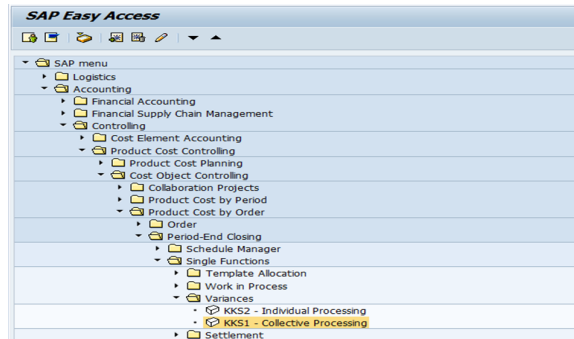
The process is completed without error



**STEP 1**

Start the transaction using the menu path or transaction code

 **KKS1 - Collective Processing**



Variance Calculation: Initial Screen

**Variance Calculation: Initial Screen**

Plant  All Plants in Controlling Area

With Production Orders  
 W/Product Cost Collectors  
 With Process Orders

Parameters

Period   
Fiscal Year

All target cost vsns 000,001,003  
 Selected Target Cost Vsns 000

Processing options

Background Processing  
 Test Run  
 Detail list

**STEP 2**

1. Enter the plant code
2. Untick "with Production Orders"
3. Do not tick "W/Product Cost Collectors"
4. Select "With Process Orders"
5. Enter the period to close and the fiscal year
6. Select "Background Processing"
7. Untick "Test Run"
8. Tick "Detail list"

Execute 

**Variance Calculation: Initial Screen**

Plant  All Plants in Controlling Area

With Production Orders  
 W/Product Cost Collectors  
 With Process Orders

Parameters

Period   
Fiscal Year

All target cost vsns 000,001,003  
 Selected Target Cost Vsns 000

Processing options

Background Processing  
 Test Run  
 Detail list

**STEP 3**

If requested enter the controlling area

and 

**Variance Calculation: Initial Screen**

Plant  All Plants in Controlling Area

With Production Orders  
 W/Product Cost Collectors  
 With Process Orders

Parameters

Period   
Fiscal Year

All target cost vsns 000,001,003  
 Selected Target Cost Vsns 000

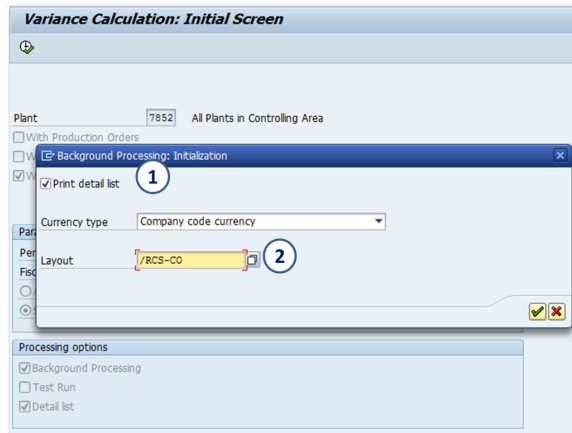
Processing options

Background Processing  
 Test Run  
 Detail list

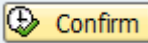
**Set Controlling Area**  
Controlling Area

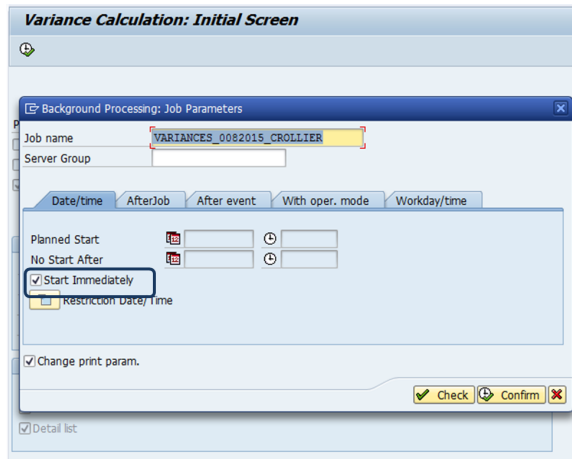
**STEP 4**

1. Tick on « Print detail list »
2. Select the layout « /RCS-CO »




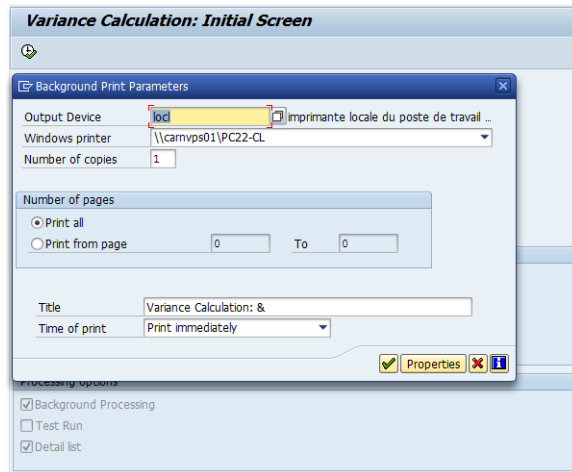
**STEP 5**


- Use the default job name and the default server group
- Tick on « Start immediately »
- Click on 

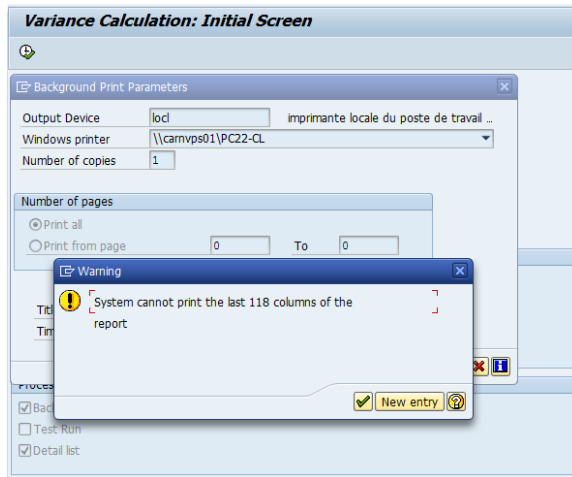


**STEP 6**

- Enter an output device
- Validate the printing parameters
- and enter 



You can skip the warning message by clicking on 

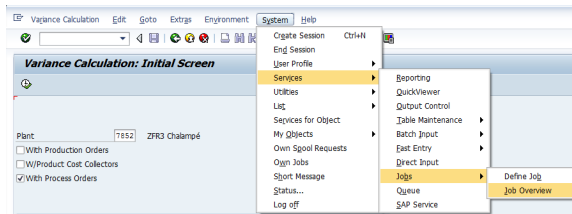


A message informs that the Job is active


Job VARIANCES\_0082015\_CROLLIER for user CROLLIER is Active

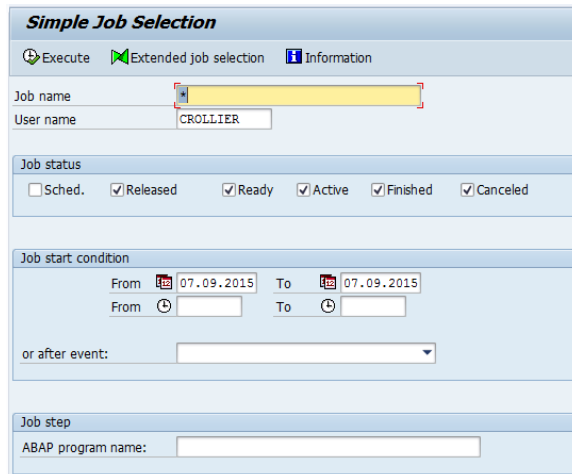
**STEP 7**

Open the job overview



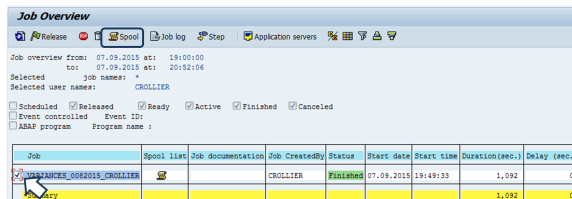
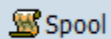
**STEP 8**

Execute  with your user name



**STEP 9**

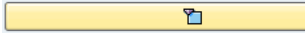
Once the job has the status finished, you can display the spool by selecting the job and clicking on



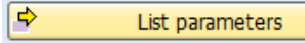
**STEP 10**



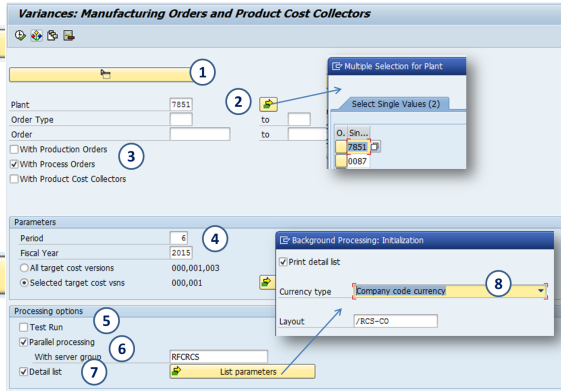
1. Click on



2. Enter the list of plants
3. Select "With Process Orders"
4. Enter the period to close and the fiscal year
5. Untick "Test Run"
6. Tick "Parallel processing"
7. Tick "Detail list"
8. Click on



- Tick "Print detail list"
- Enter the layout /RCS-CO



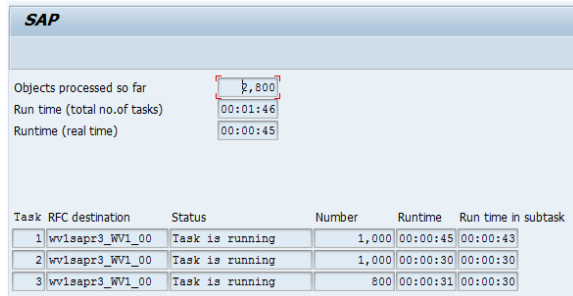
Execute

**Background Processing**

You can execute this transaction in background pressing F9 and you will get the job spool through **S** **MX**

**STEP 3**

You are informed that tasks are running



**STEP 4**

The variance calculation report is displayed

**Variance Calculation: List**

Basic List Cost Elements Scrap Variance Categories

Period: 8 Fiscal year: 2015 Messages: 31,596 Currency: EUR

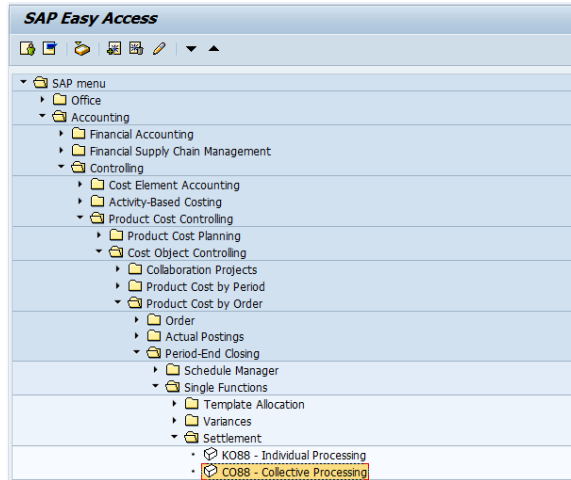
Version: Target Costs for Total Variances (0) Company code currency

Plant	Cost Object	Material	Target Costs	Actual Costs	Variance
		00000000000010519	0.00	9,065.96	322.15
		00000000000010566	0.00	22,307.30	92.29
		00000000000010567	0.00	0.00	0.00
		00000000000010571	0.00	0.00	0.00
		00000000000011830	0.00	4,303,909.1	499,965.26
		00000000000015158	0.00	5,885.24	3.38
		00000000000016177	0.00	0.00	0.00
		00000000000016181	0.00	0.00	0.00
		00000000000017023	0.00	44,755.74	127.70
		00000000000017024	0.00	3,492.86	67.96
		00000000000017032	0.00	0.00	0.00
		00000000000017036	0.00	0.00	0.00
		00000000000021117	0.00	0.00	0.00
		00000000000023128	0.00	22,070.57	401.44
		00000000000023335	0.00	0.00	0.00
		00000000000023474	0.00	31,723.72	173.19
		00000000000024274	0.00	0.00	0.00
		00000000000024504	0.00	137,203.33	13,447.84
		00000000000024572	0.00	15,249.72	223.54
		00000000000025255	0.00	0.00	0.00
		00000000000025449	0.00	51,190.55	421.29
		00000000000036011	0.00	5,708.74	272.99

**STEP 1**

Start the transaction using the menu path or transaction code

## CO88 - Collective Processing



**i** Actual Settlement:  
Production/Process Orders:  
Initial screen

### Actual Settlement: Production/Process Orders

Plant:  ZFR3 Chalampé

With Production Orders  
 With Process Orders  
 With Product Cost Collectors  
 With QM Orders

With Orders for Projects/Networks  
 With Orders for Cost Objects

Parameters

Settlement period:       Posting period:

Fiscal Year:

Processing type:

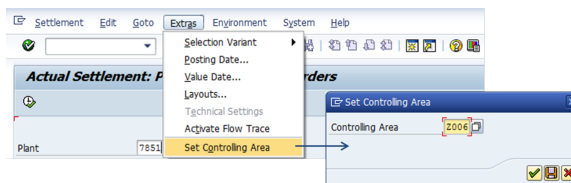
Processing Options

Background Processing  
 Test Run  
 Detail List  
 Check trans. data

[Layouts](#)

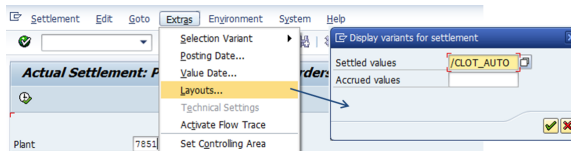
### STEP 2

Set the controlling area



### STEP 3

Define the layout for the result : /CLOT\_AUTO

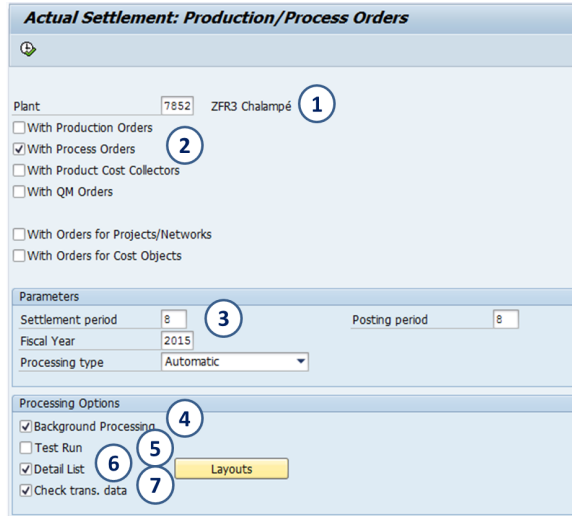


### STEP 4

1. Enter the plant code
2. Select with "Process Orders"
3. Parameters
  - Enter the period to close and the fiscal year
  - Select the processing type "Automatic"

4. Tick "Background Processing"
5. Untick "Test Run"
6. Tick "Detail list"
7. Tick "Check trans. data"

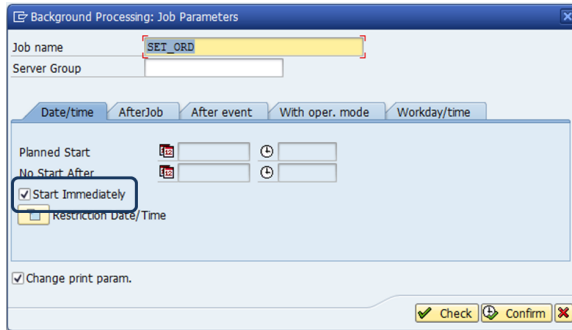
Execute 



**STEP 5**


- Tick "Start immediately"

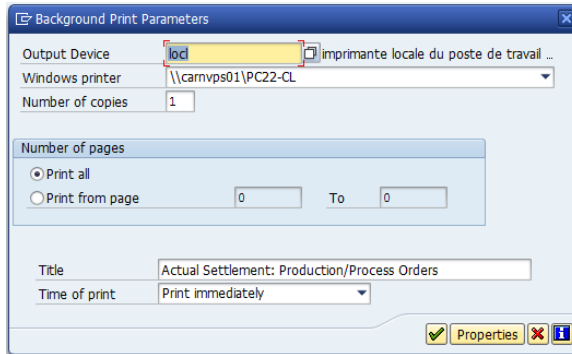
• Confirm 




**STEP 6**

- Enter an output device
- Validate the printing

parameters 

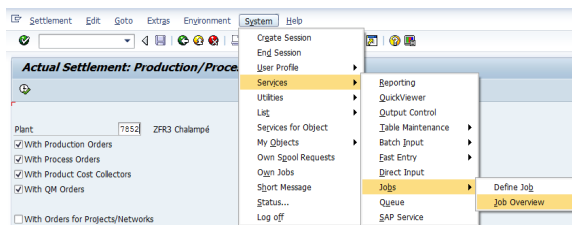


A message informs that the Job is ready

 Job SET\_ORD for user CROLLIER is Ready

**STEP 7**

Display the result



**STEP 8**

Execute with your username

### Simple Job Selection

Execute Extended job selection Information

Job name:

User name: CROLLIER

Job status:  Sched.  Released  Ready  Active  Finished  Canceled

Job start condition

From: 08.09.2015 To: 08.09.2015

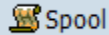
or after event:

Job step

ABAP program name:

**STEP 9**

Once the job has the status finished, you can display the spool by selecting the job and clicking on



### Job Overview

Release Spool Job log Step Application servers

Job overview from: 08.09.2015 at: 13:00:44  
to: 08.09.2015 at: 13:13:56

Selected job names: \*  
Selected user names: CROLLIER

Scheduled  Released  Ready  Active  Finished  Canceled

Job	Spool list	Job documentation	Job CreatedBy	Status	Start date	Start time	Duration(sec.)	Delay (sec.)
SP1_0RD			CROLLIER	Finished	08.09.2015	13:11:52	647	0
MAI_Ary							647	0

**STEP 10**

Select the spool and click on



### Output Controller: List of Spool Requests

Spool no.	Type	Date	Time	Status	Pages	Title or name of spool request
73609		08.09.2015	19:22	-	6	Actual Settlement: Production/Process Orders

**STEP 11**

The result displayed the sender, the receiver and the posted amount

Note: the settlement will only be done for orders with the status DLV (Delivered) or TECO (Technically completed). Orders without these status are considered WIP (Work in Process)

### Detail list - Settled values

Sender	Short text: Sender	Receiver	ValCOArCur	Inform.
ORD 2618729	ACIDE ADIPIQUE EX -EFFOL ( EFFOL + AA3T	MAI 7852/74337	13,142.69	
ORD 2618729	ACIDE ADIPIQUE EX -EFFOL ( EFFOL + AA3T	FSG 0007932372	13,142.69	Variances
ORD 2619481	ACIDE ADIPIQUE EX -EFFOL ( EFFOL + AA3T	MAI 7852/74337	13,142.69	
ORD 2619481	ACIDE ADIPIQUE EX -EFFOL ( EFFOL + AA3T	FSG 0007932352	13,142.69	Variances
ORD 2619613	ACIDE ADIPIQUE EX -EFFOL ( EFFOL + AA3T	MAI 7852/74337	13,142.69	
ORD 2619613	ACIDE ADIPIQUE EX -EFFOL ( EFFOL + AA3T	FSG 0007932340	13,142.69	Variances
ORD 2619626	ACIDE ADIPIQUE EX -EFFOL ( EFFOL + AA3T	MAI 7852/74337	13,142.69	
ORD 2619626	ACIDE ADIPIQUE EX -EFFOL ( EFFOL + AA3T	FSG 0007932328	13,142.69	Variances
ORD 2621823	ACIDE ADIPIQUE EX -EFFOL ( EFFOL + AA3T	MAI 7852/74337	13,142.69	
ORD 2621823	ACIDE ADIPIQUE EX -EFFOL ( EFFOL + AA3T	FSG 0007931714	13,142.69	Variances
ORD 2621928	ACIDE ADIPIQUE EX -EFFOL ( EFFOL + AA3T	MAI 7852/74337	13,142.69	
ORD 2621928	ACIDE ADIPIQUE EX -EFFOL ( EFFOL + AA3T	FSG 0007931696	13,142.69	Variances
ORD 2621933	ACIDE ADIPIQUE EX -EFFOL ( EFFOL + AA3T	MAI 7852/74337	13,142.69	
ORD 2621933	ACIDE ADIPIQUE EX -EFFOL ( EFFOL + AA3T	FSG 0007931675	13,142.69	Variances
ORD 2621938	ACIDE ADIPIQUE EX -EFFOL ( EFFOL + AA3T	MAI 7852/74337	13,142.69	
ORD 2621938	ACIDE ADIPIQUE EX -EFFOL ( EFFOL + AA3T	FSG 0007931660	13,142.69	Variances
ORD 2623129	ACIDE ADIPIQUE EX -EFFOL ( EFFOL + AA3T	MAI 7852/74337	13,142.69	
ORD 2623129	ACIDE ADIPIQUE EX -EFFOL ( EFFOL + AA3T	FSG 0007931642	13,142.69	Variances

**STEP 1**

Start the transaction ZWFA78



Variances: Manufacturing Orders and Product Cost Collectors: Initial Screen

**Settlement: Production Orders and Product Cost Collectors**

Plant:

Parameters  
 Settlement period:   
 Settlement year:   
 Processing type:  Automatic

Execution type  
 Settlement  
 Reverse settlement

Processing options  
 Test Run  
 Parallel processing  
 Check transaction data

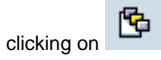
Output options  
 With list

Optional parameters  
 Posting period:   
 Posting Date:   
 Value date:

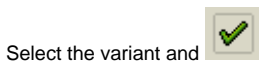
Technical settings

**STEP 2**

You can look for an existing variant by



clicking on



Select the variant and

Check the settlement period & posting period



Execute

**Settlement: Production Orders and Product Cost Collectors**

Plant:

Parameters  
 Settlement period:   
 Settlement year:   
 Processing type:  Automatic

Execution type  
 Settlement  
 Reverse settlement

Processing options  
 Test Run  
 Parallel processing  
 Check transaction data

Output options  
 With list

Optional parameters  
 Posting period:   
 Posting Date:   
 Value date:

Technical settings

**ABAP: Variant Directory of Program RK07CO88**

Variant name	Short Description	Environment; Protected	Changed by	Last changed on
SCMA_7811_STPP	7811: PP order settlement	A	FYPANG	21.03.2014
SCMA_8090_STPP	8090: PP order settlement	A	PT300090	01.10.2014
SCMA_8485_STPP	SCMA_8485_STPP	A	PT300090	01.10.2014
SCMA_ZFR3_STPP	ZFR3: PP order settlement	A	PT300090	01.10.2014
SCMA_ZFR9_STPP	SCMA_ZFR9_STPP	A	PT300090	01.10.2014
SCMA_ZVE1_PPOR		A	BR004229	30.06.2014
2010-ZU54	ECO Services	A	MKONDABA	29.09.2014
2010-ZU54-2015	ECO Services	A	MKONDABA	29.09.2014
2025-7394		A		
2025-7523		A		
2026-7154	Rhodia Inc	A		
2026-7424	Rhodia Inc	A		
2026-7424-2015	Rhodia Inc	A	PESTELLE	04.01.2011
2028-7651	Rhodia Canada Inc	A	PESTELLE	02.03.2010
ZC088_Z001		A	PHGUENAR	09.03.2011
ZC088_Z006		A	ZLDSIC04	04.04.2013
ZC088_Z010		A	RKONDABA	12.11.2014
ZC088_Z026		A	PHGUENAR	09.03.2011

If you don't have the variant you can make the selection :

1. Click on
2. Enter the list of plants
3. Select "With Process Orders"
4. Enter the period to close and the fiscal year
5. Tick "Settlement"
6. Untick "Test Run"
7. Tick "Parallel processing"
8. Tick "Check transaction data"
9. Tick "With list"
10. Enter the Posting period (=Settlement period)



Execute

**Settlement: Production Orders and Product Cost Collectors**

Plant:

Order Type:  to

Order:  to

With Production Orders  
 With Process Orders  
 With Product Cost Collectors  
 With QM Orders

W/ Protect Ords  
 With Orders for Cost Objects

Parameters  
 Settlement period:   
 Settlement year:   
 Processing type:  Automatic

Execution type  
 Settlement  
 Reverse settlement

Processing options  
 Test Run  
 Parallel processing  
 With server group:   
 Check transaction data

Output options  
 With list

Optional parameters  
 Posting period:   
 Posting Date:   
 Value date:

Technical settings

**Multiple Selection for Plant**

Select Single Values (2)

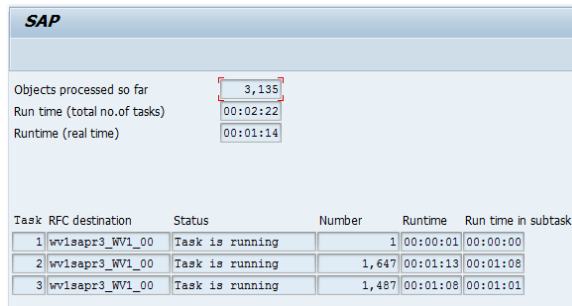
0; SIn...

**Background Processing**

You can execute this transaction in background pressing F9 and you will get the job spool through **S MX**

STEP 3

You are informed that tasks are running



SAP

Objects processed so far: 3,135  
Run time (total no. of tasks): 00:02:22  
Runtime (real time): 00:01:14

Task	RFC destination	Status	Number	Runtime	Run time in subtask
1	wv1sapr3_WV1_00	Task is running	1	00:00:01	00:00:00
2	wv1sapr3_WV1_00	Task is running	1,647	00:01:13	00:01:08
3	wv1sapr3_WV1_00	Task is running	1,487	00:01:08	00:01:01

STEP 4

The settlement was executed



Settlement: Production Orders and Product Cost Collectors Basic list

Selection

Selection Parameters	Value	Name
Plant	7852	ZFR3 Chalmopé
With Production Orders	X	
With Product Cost Collectors	X	
With Process Orders	X	
With QM Orders	X	
Period	008	
Posting period	008	
Fiscal Year	2015	
Processing type	1	Automatic
Posting Date	31.08.2015	
Controlling Area	Z006	Rhodia Europe

Processing Options

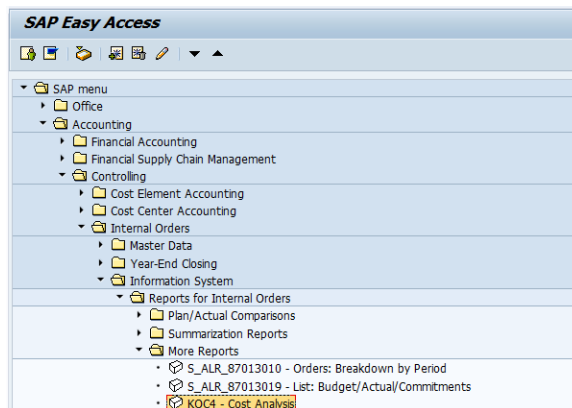
Selection Parameters	Value
Execution type	Settlement executed
Processing mode	Update run

If errors occurred in previous steps check the settlement rule and contact local responsible to correct it.

STEP 1

Start the transaction using the menu path or transaction code

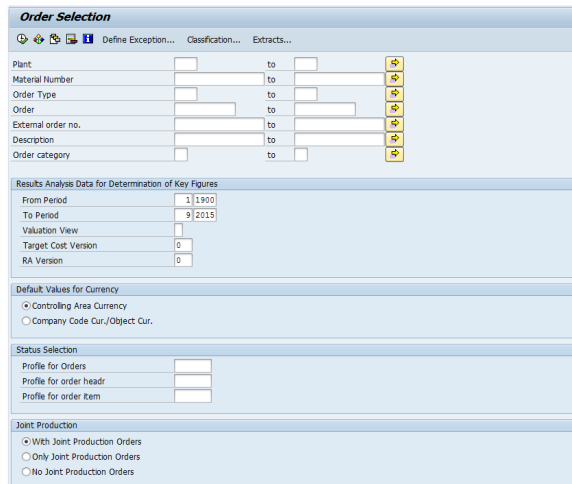
KOC4 - Cost Analysis



SAP Easy Access

- SAP menu
  - Office
  - Accounting
    - Financial Accounting
    - Financial Supply Chain Management
    - Controlling
      - Cost Element Accounting
      - Cost Center Accounting
      - Internal Orders
        - Master Data
        - Year-End Closing
        - Information System
        - Reports for Internal Orders
          - Plan/Actual Comparisons
          - Summarization Reports
          - More Reports
            - S\_ALR\_87013010 - Orders: Breakdown by Period
            - S\_ALR\_87013019 - List: Budget/Actual/Commitments
            - KOC4 - Cost Analysis

Order Selection: Initial screen



Order Selection

Plant: [ ] to [ ]

Material Number: [ ] to [ ]

Order Type: [ ] to [ ]

Order: [ ] to [ ]

External order no.: [ ] to [ ]

Description: [ ] to [ ]

Order category: [ ] to [ ]

Results Analysis Data for Determination of Key Figures

From Period: 1/1900  
To Period: 9/2015  
Valuation View: [ ]  
Target Cost Version: 0  
RA Version: 0

Default Values for Currency

Controlling Area Currency  
 Company Code Cur./Object Cur.

Status Selection

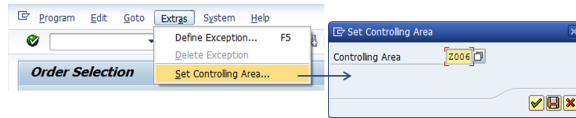
Profile for Orders: [ ]  
Profile for order headr: [ ]  
Profile for order item: [ ]

Joint Production

With Joint Production Orders  
 Only Joint Production Orders  
 No Joint Production Orders

STEP 2

Set the Controlling Area



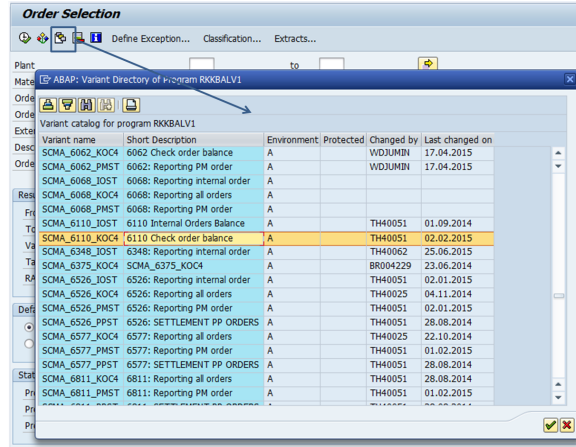
STEP 3

You can look for an existing variant by

clicking on

Select the variant and

Enter the period



When there is not an existing variant you can make the following selection :

1. Enter the plant code

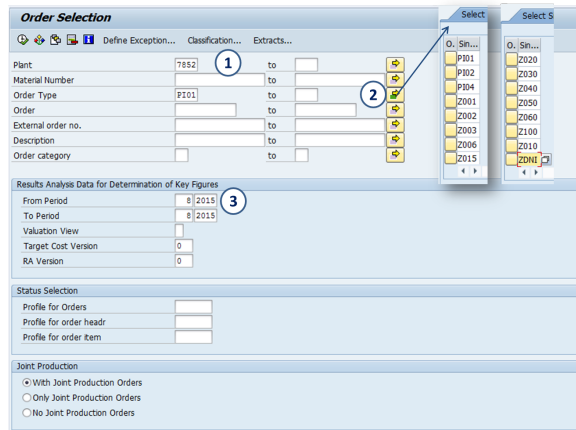
2. Enter the list of "order type" using the list below

PI01	Z002	Z015	Z050	ZDNI
PI02	Z003	Z020	Z060	
PI04	Z006	Z030	Z100	
Z001	ZDNI	Z040	Z010	

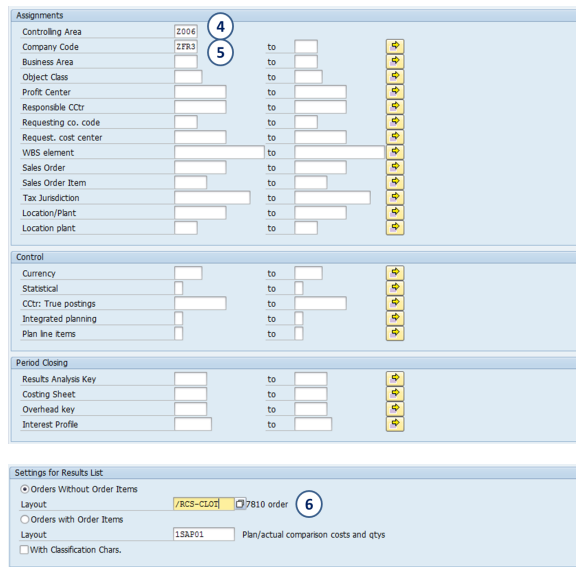
3. Enter the period

4. Enter the controlling area

5. Enter the company code

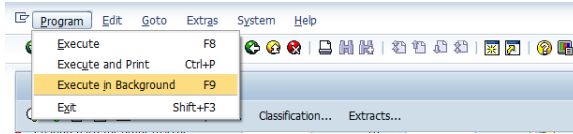


Enter the layout "/RCS-CLOT" to filter on non balanced orders




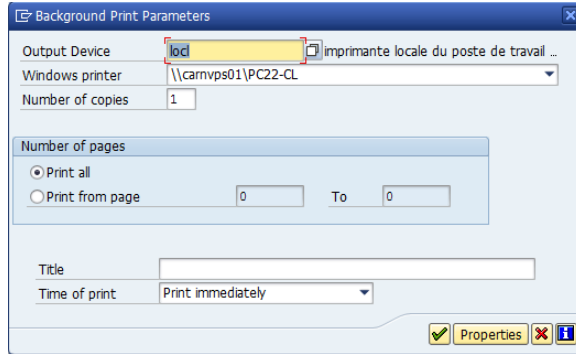
**STEP 4**

During the closing period, launch processing in background with RFCRCS server group (when the option is available)

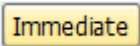



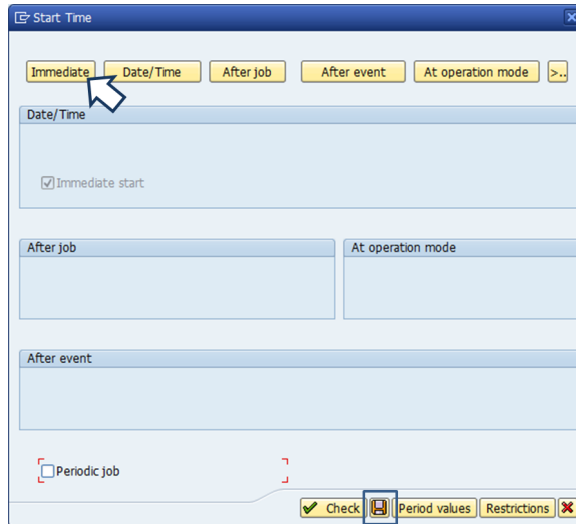
**STEP 5**

- Enter an output device
- Validate the printing parameters
- and enter 

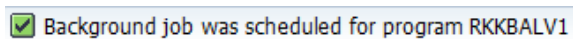


**STEP 6**

Click on  to launch the processing immediately and save 

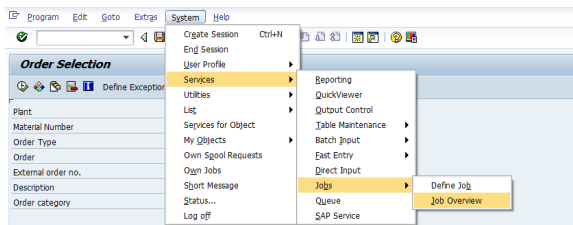


A message informs that the Job is active



**STEP 7**

Open the job overview



**STEP 8**

Execute  with your user name

### Simple Job Selection

Execute Extended job selection Information

Job name:

User name: CROLLIER

Job status:  Sched.  Released  Ready  Active  Finished  Canceled

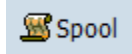
Job start condition: From: 08.09.2015 To: 08.09.2015

or after event:

Job step: ABAP program name:

**STEP 9**

Once the job has the status finished, you can display the spool by selecting the job and clicking on



### Job Overview

Release Spool Job log Step Application servers

Job overview from: 08.09.2015 at: 15:33:41  
To: 08.09.2015 at: 23:33:53

Selected job names: \*  
Selected user names: CROLLIER

Scheduled  Released  Ready  Active  Finished  Canceled

Job	Spool list	Job documentation	Job CreatedBy	Status	Start date	Start time	Duration(sec.)	Delay (sec.)
<input checked="" type="checkbox"/> 73996			CROLLIER	Finished	08.09.2015	19:31:29	475	0
<input checked="" type="checkbox"/> Summary							475	0

**STEP 10**

Select the spool and click on



### Output Controller: List of Spool Requests

no.	Type	Date	Time	Status	Pages	Title
<input checked="" type="checkbox"/> 73996		09.09.2015	01:39	-	2	LISTIS LOCL RKKBALV1_CRO

**STEP 11**

This report display all unbalanced process order.

### Current Data

Plant	Order	Material Number	Crcy	Actual cost debit	Total act.costs
<input type="checkbox"/>	7852	3383546	61111	EUR 11,999.58	11,999.58
<input type="checkbox"/>	7852	3383547	61111	EUR 1,765.92	1,765.92
<input type="checkbox"/>	7852	3383548	61111	EUR 48,924.00-	48,924.00-
<input type="checkbox"/>	7852	3383549	61111	EUR 1,737.30	1,737.30
<input checked="" type="checkbox"/>	* 7852		61111	EUR 33,431.20-	33,431.20-
<input type="checkbox"/>	7852	3383585	72647	EUR 9,709.44-	9,709.44-
<input type="checkbox"/>	7852	3383586	72647	EUR 14,464.68-	14,464.68-
<input type="checkbox"/>	7852	3391561	72647	EUR 55,108.20-	55,108.20-
<input checked="" type="checkbox"/>	* 7852		72647	EUR 79,282.32-	79,282.32-
<input type="checkbox"/>	7852	3383535	72765	EUR 116,758.54	116,758.54
<input type="checkbox"/>	7852	3383536	72765	EUR 8,683.11-	8,683.11-
<input checked="" type="checkbox"/>	* 7852		72765	EUR 108,075.43	108,075.43
<input type="checkbox"/>	7852	3383528	72766	EUR 249.90-	249.90-
<input type="checkbox"/>	7852	3383529	72766	EUR 280.86-	280.86-
<input checked="" type="checkbox"/>	* 7852		72766	EUR 530.76-	530.76-
<input type="checkbox"/>	7852	3383578	72811	EUR 0.20-	0.20-
<input type="checkbox"/>	7852	3383579	72811	EUR 0.14-	0.14-
<input checked="" type="checkbox"/>	* 7852		72811	EUR 0.34-	0.34-
<input type="checkbox"/>	7852	3374280	72814	EUR 0.01-	0.01-
<input checked="" type="checkbox"/>	* 7852		72814	EUR 0.01-	0.01-
<input type="checkbox"/>	7852	3383571	73712	EUR 5,437.54	5,437.54
<input type="checkbox"/>	7852	3383572	73712	EUR 2,980.89-	2,980.89-
<input type="checkbox"/>	7852	3391562	73712	EUR 98,677.66	98,677.66
<input checked="" type="checkbox"/>	* 7852		73712	EUR 101,134.31	101,134.31
<input type="checkbox"/>	7852	3383563	74337	EUR 3,496.35-	3,496.35-
<input type="checkbox"/>	7852	3383564	74337	EUR 3,226.63-	3,226.63-
<input type="checkbox"/>	7852	3383566	74337	EUR 5,783.04-	5,783.04-

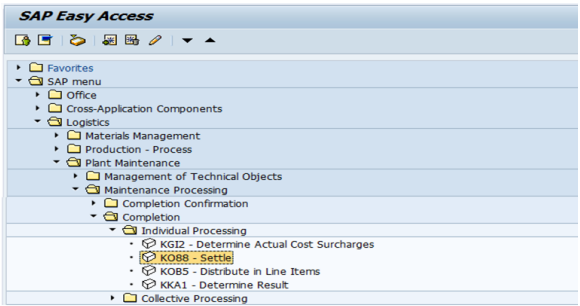
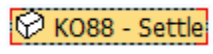
We can have sometimes some unbalanced process orders after the settlements due to late postings or materials lately costed. To perform the variance calculation and the settlement to COPA of these orders we have to do it individually using transactions KKS2 (for calculation) and KO88 (for the settlement).

Unable to render {include} The included page could not be found.

**KO88 - VARIANCE SETTLEMENT**

**STEP 1**

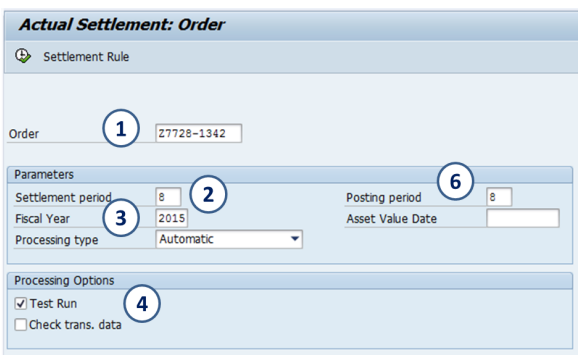
Start the transaction using the menu path or transaction code



**STEP 2**

1. Enter the order to be settled
2. Enter the settlement period
3. Enter the fiscal year
4. Select "test run" to preview the settlement without posting

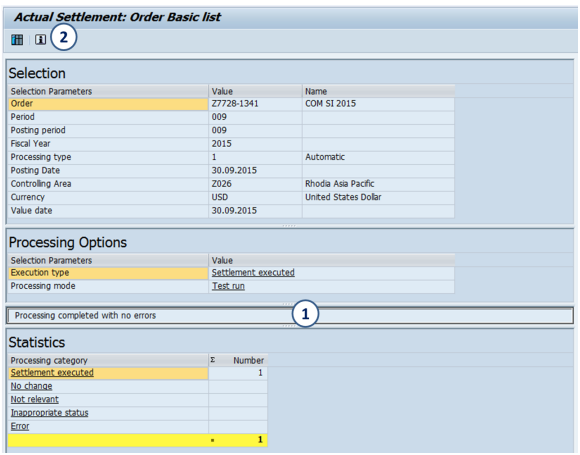
Execute



**STEP 3**

1. Check if there are error messages
2. Click on to display messages

Come back to the initial screen with



**STEP 4**

If there was no error, you can execute without "test mode"

**Actual Settlement: Order**

Settlement Rule

Order: 27728-1341


Parameters

Settlement period: 9      Posting period: 9  
 Fiscal Year: 2015      Asset Value Date:   
 Processing type: Automatic

Processing Options

Test Run  
 Check trans. data

**STEP 5**

To view the detailed list of settlements click on 

**Actual Settlement: Order Basic list**

Selection

Selection Parameters	Value	Name
Order	27728-1341	COM SI 2015
Period	009	
Posting period	009	
Fiscal Year	2015	
Processing type	1	Automatic
Posting Date	30.09.2015	
Controlling Area	2026	Rhoda Asia Pacific
Currency	USD	United States Dollar
Value date	30.09.2015	

Processing Options


Selection Parameters	Value
Execution type	Settlement executed
Processing mode	Update run

Processing completed with no errors

Statistics


Processing category	Number
Settlement executed	1
No change	
Not relevant	
Inappropriate status	
Error	1

I perform corrective action if there are some errors in the previous steps

 • For **WIP (ZWFAA07, KKAO and KKAX)** you have to run the transaction only in test mode, NOT in processing mode.

**STEP 1**

Start the transaction using the menu path or transaction code **KKAO**

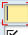
 Order Selection: Initial screen

**Calculate Work in Process: Collective Processing**

Plant:  All Plants

With Production Orders  
 With Product Cost Collectors  
 With Process Orders

Parameters

WIP to Period:   
 Fiscal Year:   
 All RA Versions  
 RA Version

Processing Options

Background Processing  
 Test Run  
 Log Information Messages

Output Options

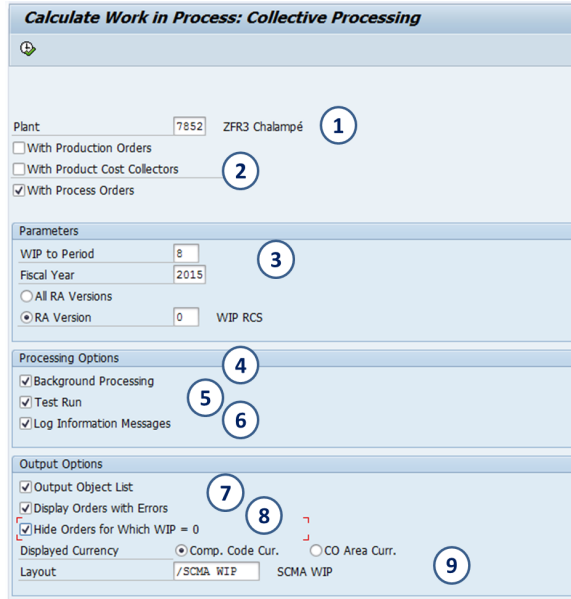
Output Object List  
 Display Orders with Errors  
 Hide Orders for Which WIP = 0  
 Displayed Currency:  Comp. Code Cur.     CO Area Curr.  
 Layout: /SCMA WIP    SCMA WIP

**STEP 2**

1. Enter the plant
2. Select with "Process Orders"

3. Enter the WIP to period: last month for which the accrual /deferral or work in progress data must be calculated.
4. Tick "Background Processing"
5. Tick "Test Run"
6. Tick "Log Information Messages"
7. Tick "Display Orders with Errors"
8. Tick "Hide Orders for Which WIP = 0"
9. Layout = /SCMA WIP

Execute 



**Calculate Work in Process: Collective Processing**

Plant: 7852 ZFR3 Chalmé **1**

With Production Orders  
 With Product Cost Collectors **2**  
 With Process Orders

**Parameters**

WIP to Period: 8 **3**  
 Fiscal Year: 2015  
 All RA Versions  
 RA Version: 0 WIP RCS

**Processing Options**

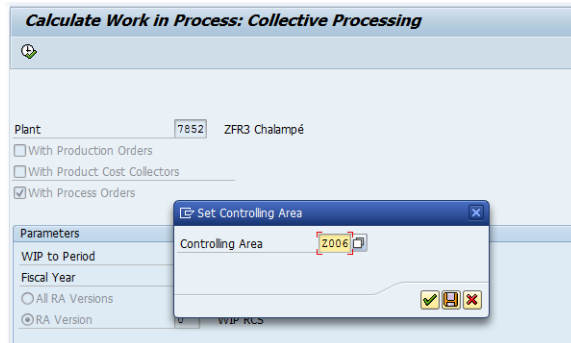
Background Processing **4**  
 Test Run **5**  
 Log Information Messages **6**

**Output Options**

Output Object List **7**  
 Display Orders with Errors **8**  
 Hide Orders for Which WIP = 0  
 Displayed Currency:  Comp. Code Cur.  CO Area Curr.  
 Layout: /SCMA WIP **9** SCMA WIP

**STEP 3**

Set the controlling area



**Calculate Work in Process: Collective Processing**

Plant: 7852 ZFR3 Chalmé

With Production Orders  
 With Product Cost Collectors  
 With Process Orders

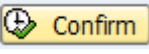
**Parameters**

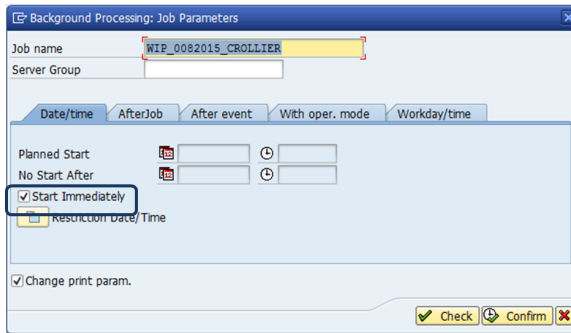
WIP to Period  
 Fiscal Year  
 All RA Versions  
 RA Version

**Set Controlling Area**

Controlling Area: 2006

**STEP 4**

- Tick "Start immediately"
- Confirm 



**Background Processing: Job Parameters**

Job name: WIP\_0082015\_CROLLIER  
 Server Group:

Date/time | AfterJob | After event | With oper. mode | Workday/time


Planned Start: [ ] [ ]  
 No Start After: [ ] [ ]

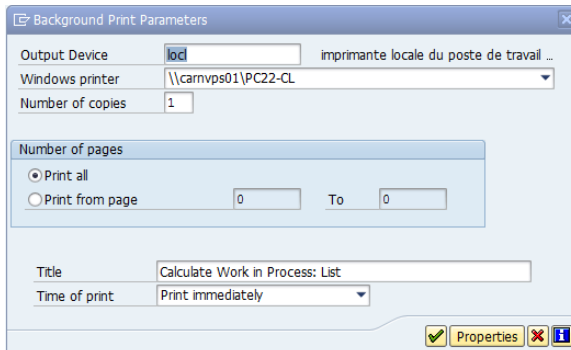
Start Immediately  
 Resurrection Date/Time

Change print param.

Check Confirm

**STEP 5**

- Enter an output device
- Validate the printing parameters
- and enter 



**Background Print Parameters**

Output Device: lcd imprimante locale du poste de travail ...  
 Windows printer: \\camvps01\PC22-CL  
 Number of copies: 1


**Number of pages**

Print all  
 Print from page: 0 To: 0

Title: Calculate Work in Process: List  
 Time of print: Print immediately

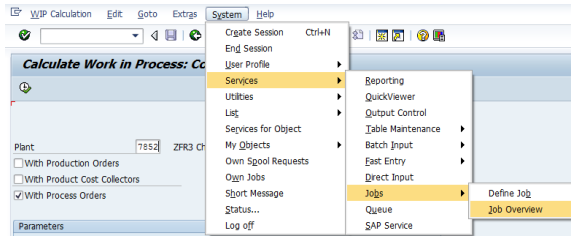
Properties

A message informs that the Job is active


 Job WIP\_0082015\_CROLLIER for user CROLLIER is Ready

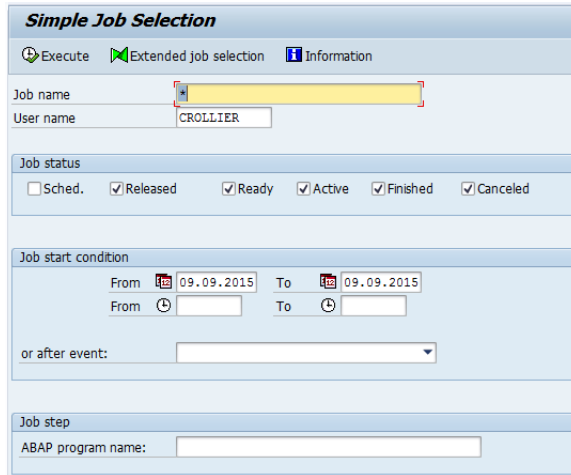
**STEP 6**

Open the job overview



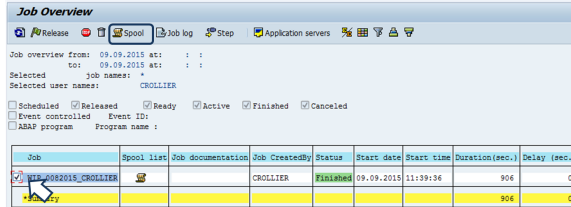
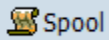
**STEP 7**

Execute  with your user name



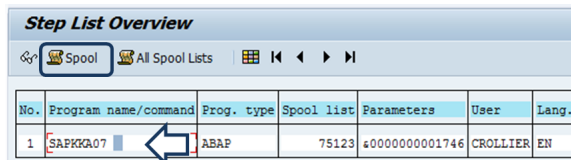
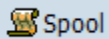
**STEP 10**

Once the job has the status finished, you can display the spool by selecting the job and clicking on

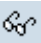


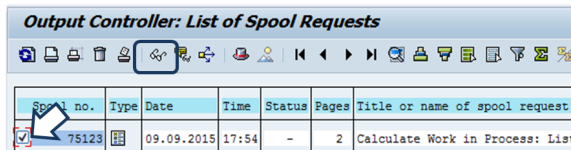
**STEP 11**

Select the program and click on



**STEP 12**

Select the spool and click on 



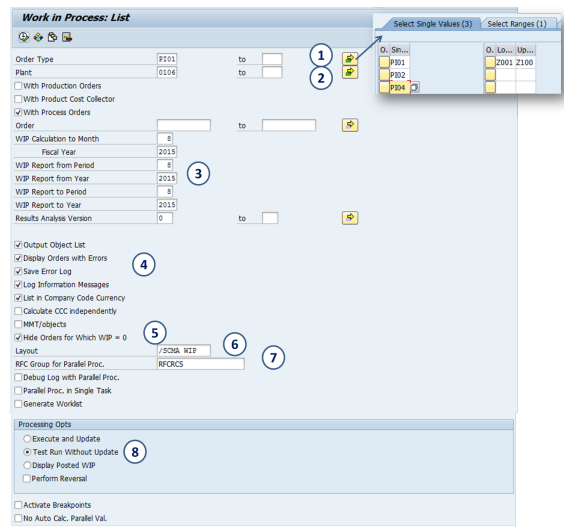
**STEP 12**

The order list with WIP was calculated



- e. List in Company Code Currency
- 5. Tick: Hide Orders for Which WIP = 0
- 6. Layout = /SCMA WIP
- 7. RFC Group for Parallel Proc. = RFCRCS
- 8. Tick: Test Run Without Update

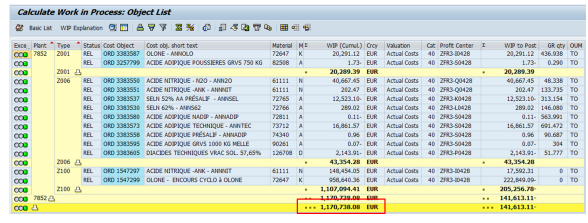
Execute 



The screenshot shows the 'Work in Process: List' transaction. Callouts indicate the following settings: 1. Selection of order types (P101, P102, P104); 2. Selection of plants (0106); 3. Selection of fiscal year (2015); 4. Selection of 'List in Company Code Currency'; 5. Selection of 'Hide Orders for Which WIP = 0'; 6. Selection of layout '/SCMA WIP'; 7. Selection of RFC group 'RFCRCS'; 8. Selection of 'Test Run Without Update' under 'Processing Opts'.

**STEP 3**

The order list with WIP was calculated by plant



Doc	Plant	Type	Status	Cost Object	Cost Obj. Short Text	Material	UoM	WIP (Current)	Ccy	Validation	Cal. Thrst. Center	Z	WIP to Post	GR Qty	QM
COB	7852	2901	REL	ORD 338587	OLONE - ANNOLO	72647	K	20,291.12	EUR	Actual Costs	40 2903-00A28		20,291.12	436,838	TO
COB	2901	Δ	REL	ORD 327799	ACIDE ADOPHIQUE POSSIBLES GIVIS 750 KG	82598	A	1.75	EUR	Actual Costs	40 2903-00A28		1.75	0.290	TO
COB	2906	Δ	REL	ORD 338588	ACIDE NETRIQUE - H2O2 - ANNOLO	61111	N	20,299.39	EUR	Actual Costs	40 2903-00A28		20,299.39		TO
COB	2906	REL	ORD 338589	ACIDE NETRIQUE - ANK - ANNET	61111	N	40,607.45	EUR	Actual Costs	40 2903-00A28		40,607.45	48,338	TO	
COB	2906	REL	ORD 338590	ACIDE NETRIQUE - ANK - ANNET	61111	N	702.47	EUR	Actual Costs	40 2903-00A28		702.47	133,250	TO	
COB	2906	REL	ORD 338597	SELA 32% AA PRESALP - ANNEL	72765	A	12,523.10	EUR	Actual Costs	40 2903-00A28		12,523.10	333,334	TO	
COB	2906	REL	ORD 338598	SELA 30% - ANNEL	72766	A	289.62	EUR	Actual Costs	40 2903-00A28		289.62	146,880	TO	
COB	2906	REL	ORD 338598	ACIDE ADOPHIQUE MADIP - ANNADIP	72811	A	0.11	EUR	Actual Costs	40 2903-00A28		0.11	603,991	TO	
COB	2906	REL	ORD 338597	ACIDE ADOPHIQUE TECHNIQUE - ANNTEC	73732	A	16,861.57	EUR	Actual Costs	40 2903-00A28		16,861.57	691,452	TO	
COB	2906	REL	ORD 338598	ACIDE ADOPHIQUE PRESALP - ANNADIP	74340	A	0.96	EUR	Actual Costs	40 2903-00A28		0.96	90,687	TO	
COB	2906	REL	ORD 338595	ACIDE ADOPHIQUE GIVIS 1000 KG NELLE	90261	A	0.07	EUR	Actual Costs	40 2903-00A28		0.07	394	TO	
COB	2906	REL	ORD 338595	OPACIDES TECHNIQUES 196A-SOL 57.62%	126708	U	2,143.92	EUR	Actual Costs	40 2903-00A28		2,143.92	51,277	TO	
COB	2906	Δ	REL	ORD 1549797	ACIDE NETRIQUE - ANK - ANNET	61111	N	43,354.28	EUR	Actual Costs	40 2903-00A28		43,354.28		TO
COB	2100	REL	ORD 1549799	OLONE - ENCOURS CYCLO A OLONE	72647	K	146,424.00	EUR	Actual Costs	40 2903-00A28		146,424.00	11,900.31	0 TO	
COB	7852	Δ	REL	ORD 1549799	OLONE - ENCOURS CYCLO A OLONE	72647	K	928,649.30	EUR	Actual Costs	40 2903-00A28		928,649.30	222,849.00	0 TO
COB	7852	Δ	REL	ORD 1549799	OLONE - ENCOURS CYCLO A OLONE	72647	K	1,120,298.00	EUR	Actual Costs	40 2903-00A28		1,120,298.00	293,298.39	0 TO
COB	7852	Δ	REL	ORD 1549799	OLONE - ENCOURS CYCLO A OLONE	72647	K	1,120,298.00	EUR	Actual Costs	40 2903-00A28		1,120,298.00	293,298.39	0 TO
COB	7852	Δ	REL	ORD 1549799	OLONE - ENCOURS CYCLO A OLONE	72647	K	1,120,298.00	EUR	Actual Costs	40 2903-00A28		1,120,298.00	293,298.39	0 TO

Error: Unable to find most recent published version(v.null) of the page as it appears to have been deleted.

**Tasks to be completed when documenting an SAP Transaction, Report or Message code.**

1. Title of the page = SAP Transaction code, SAP Report or SAP Message
2. Add the following Labels, respectively:
  - SAP Transaction => "sap\_transaction"
  - SAP Report => "sap\_report"
  - SAP Message => "sap\_msg"
3. On the left section, describe the steps. On the right section, insert respective print screens and additional guidelines, if needed (e.g. Main selections of the transaction...)

**Reverse's booking date**

Previous posting was done in	Reverse is to do in
Current period	Same day as the previous posting


Closed period	The closed period cannot be opened then the reversal has to be done as soon as possible in the current (open) period
Current period and in a different currency from EUR	Same day as the previous posting and with the same currency rate
Closed period and in a different currency from EUR	First day of the open period or day of the reverse posting with the same currency rate


### Cases of reverse:


- Wrong posting in the current period
- Wrong posting in a closed period
- Reverse of accrual
- etc

#### STEP 1

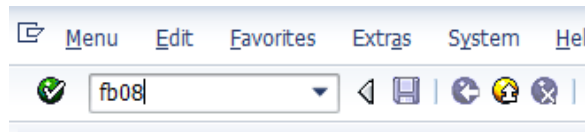
#### Use transaction code:

 FB08 - Reverse Document: Initial Screen

 If one item in the previous posting is cleared, it is not possible to reverse it. You have to reset the cleared item or use the transaction **FBR2**.

 The system does automatically clear the cancelled items when we use this transaction (FB08).

Enter the transaction name in the SAP command field:



Next screen opens:

Reverse Document: Header Data

66 Display Before Reversal Document List Mass Reversal

**Document Details**

Document Number   
Company Code   
Fiscal Year

**Specifications for Reverse Posting**

Reversal Reason   
Posting Date  Tax Reporting Date   
Posting period

**Check management specifications**


Void reason code

Fill in the following fields:

<b>Document number</b>	Document number that has to be cancelled / reverse
<b>Company code</b>	Concerned company code
<b>Fiscal Year</b>	Is always the current fiscal year
<b>Reversal reason</b>	Reverse reason (with the match code)
<b>Posting date</b>	Reverse posting date
<b>Posting period</b>	Period is automatically adapt with the posting date
<b>Void reason code</b>	Is not a mandatory field (with the match code)

#### STEP 2

#### Select the document to be reversed

 You can display the reversal before saving, if you wish to confirm you are reversing the correct entry.

Enter the barcode if it is required:

- Document
- company code
- period

#### STEP 3

Save the reverse document by clicking on 

▪ reversal reason

Reverse Document: Header Data

Reverse Document: Header Data

Display Before Reversal Document List Mass Reversal

Document Details

Document Number	160000594
Company Code	4056
Fiscal Year	2024

Specifications for Reverse Posting

Reversal Reason	01	
Posting Date		Tax Reporting Date
Posting period		

Check management specifications

Void reason code	<input type="checkbox"/>
------------------	--------------------------

STEP 4

Check other transactions to reserve documents

Other document reverse transactions:

- [FBR2 - Post Document](#)
- [F.80 - Mass Reversal of Documents](#)
- [FBU8 - Reverse Cross-Company Code Transaction](#)

 **KKAX**

Transaction KKAX can be also used to calculate the WIP when you want to do it for a single order. This is not quite usual once we have KKAO that give us all orders that are WIP.

If all orders were balanced for closing month means that this task has been successfully executed.