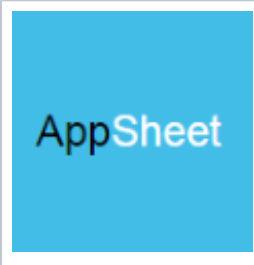


AppSheet



AppSheet



Appsheet is the quickest and easiest way of creating an application to be run on mobile phones.

It's a Rapid Application Development Platform (RAD) focused on applications that can be run in mobile devices or in desktop computers using a web browser.

It creates a user interface that can be connected with data stored in Google Sheets or Smartsheet documents. This user interface is called "Appsheet app".

You can build apps for almost anything including project management, field operations, customer service, team collaboration, task management, staffing, education, and so much more.

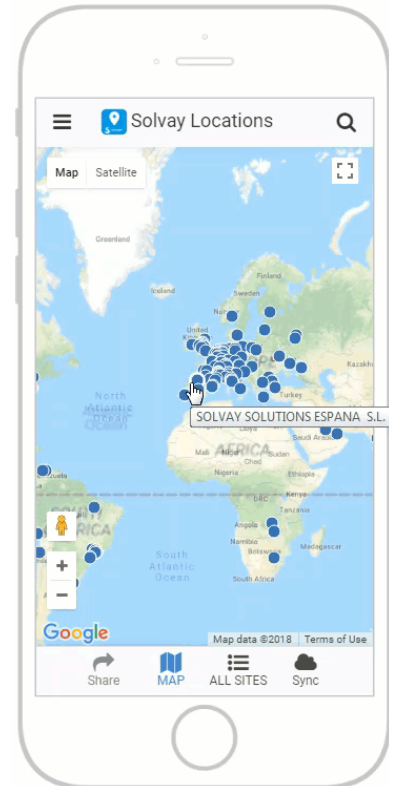
Appsheet is a Rapid Application Development Platform (RAD) focused on applications that can be run in mobile devices or in desktop computers using a web browser.

It creates a user interface that can be connected with data stored in Google Spreadsheets or Smartsheet documents. This user interface is called "Appsheet app".

The Appsheet app can be configured and tested with little effort, what makes it an ideal platform for rapid application development, with quick prototyping and fast development pace.

Appsheet Application Examples

You can play with AppSheet by copying some examples directly here: <https://www.appsheet.com/SampleApps/Index/account>



Solvay Catalog

A lot of apps have been already developed internally at Solvay, you can browse apps directly in the Solvay Catalog. [Browse Solvay Appsheet Applications](#)

I have a need, I need to create and application how I can start?

You have two options:

- 1) If you have someone in your team with skills to design the data structure, you can create the application by your own.

Have a look to [deployment life cycle](#)

- 2) If you have a need, but you don't have resources or skills, you can [submit your request](#)



Get started

- [AppSheet - Introduction](#)
- [AppSheet - Access and first login](#)
- [AppSheet - Access to an existing shared app](#)
- [AppSheet - Deployment Lifecycle](#)
- [AppSheet - Positioning](#)



Solvay App Catalog

[Solvay Catalog App Catalog](#)

Let's discover the existing applications!

FAQ

- [AppSheet - How to create an application? Development guide](#)
- [AppSheet - How to request coaching or new application?](#)
- [AppSheet - How to request deployment?](#)
- [AppSheet - How to install an AppSheet app on mobile](#)
- [AppSheet - How to share your apps for testing purposes?](#)
- [AppSheet - How to avoid the SSO pop up page in AppSheet application?](#)
- [AppSheet - How to create generic account to manage applications?](#)
- [AppSheet - How to open AppSheet platform using a generic account?](#)
- [AppSheet - How to count the number of used licenses ? \(only for admin\)](#)
- [AppSheet - How to migrate a user between domains?](#)

Troubleshooting

In case of problems accessing the application, you have to create a ticket using Freshdesk (<https://sbs-support.solvay.com>) via new IS Request.

Remember to select "AppSheet" in the application list, so it's correctly tracked and routed.