

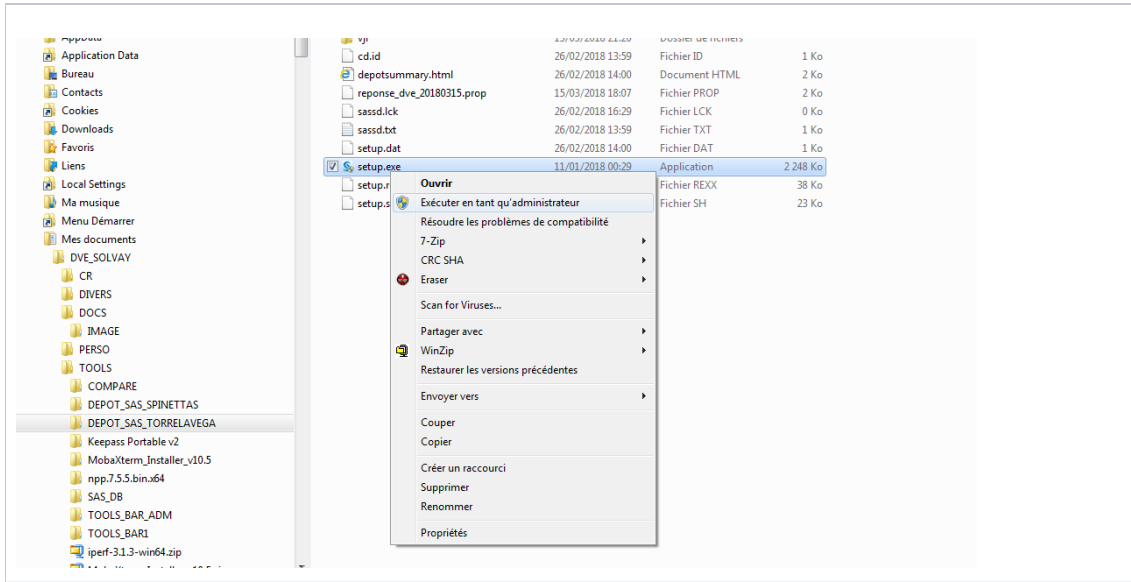

Install SAS Client software

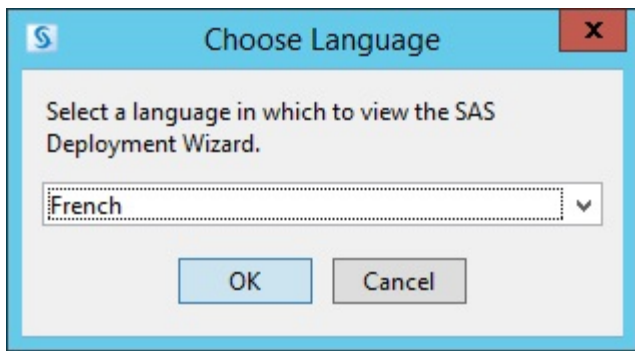
To install SAS Client, you need to SAS DEPOT on your computer, and have local Administrator privilege.

(SAS DEPOT : SAS files installations)

Before installing complete step :

- Get privilege Access to SAS Platform :
- Define SAS Client Tools :

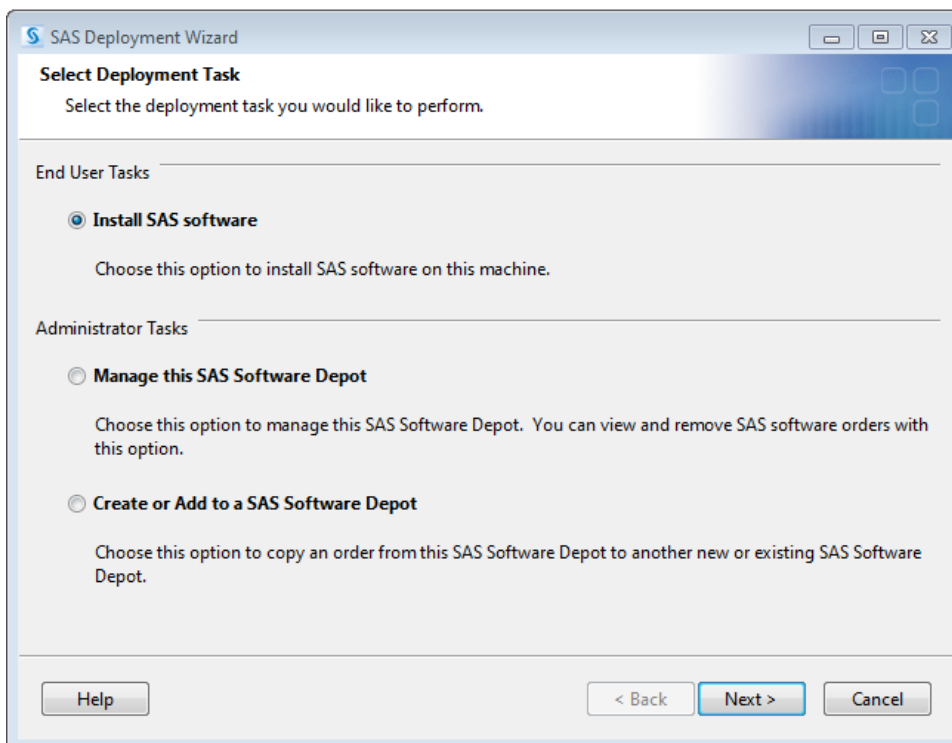
	<p>STEP 1 :</p> <p>Go on the SAS DEPOT directory:</p> <p>SAS_DEPOT_CLIENT_ONLY</p> <p>Execute: setup.exe in administrator right</p>
	<p>STEP 2 :</p> <p>Starting SAS Deployment Wizard (SDW)</p>



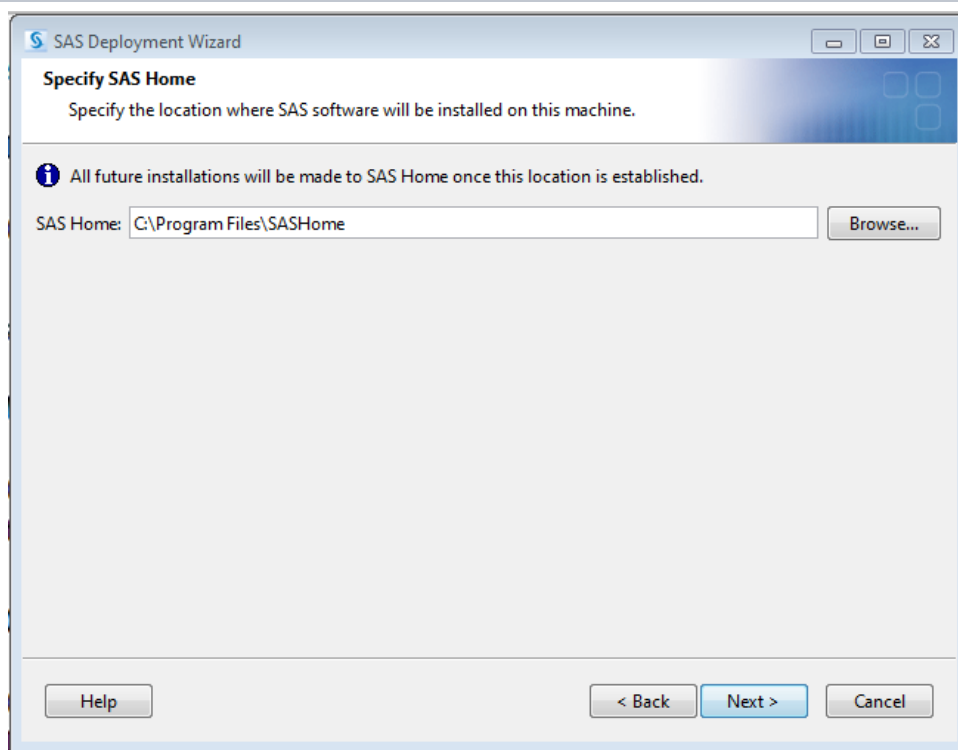
STEP 3 :
Select language for the SDW tool
> English
> OK



STEP 4 :
Initialization of SDW



STEP 5 :
Select Deployment Task :
> Install SAS Software
> Next



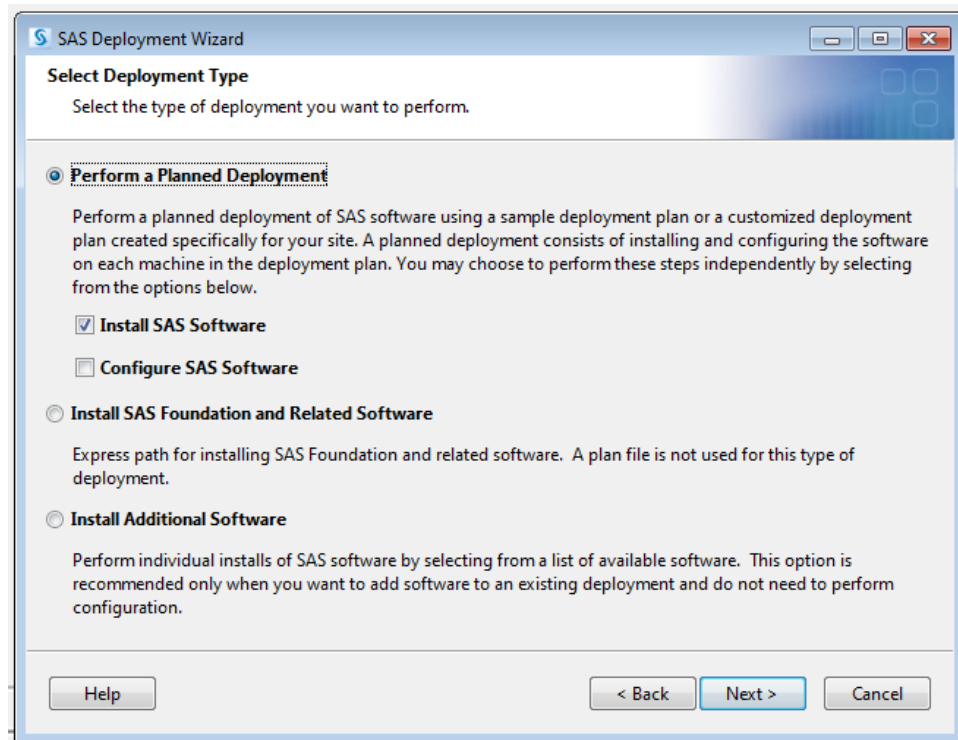
STEP 6 :

Specify SAS Home :

> C:\Program Files\SASHome

If the directory already exist, please confirm the path

> Next



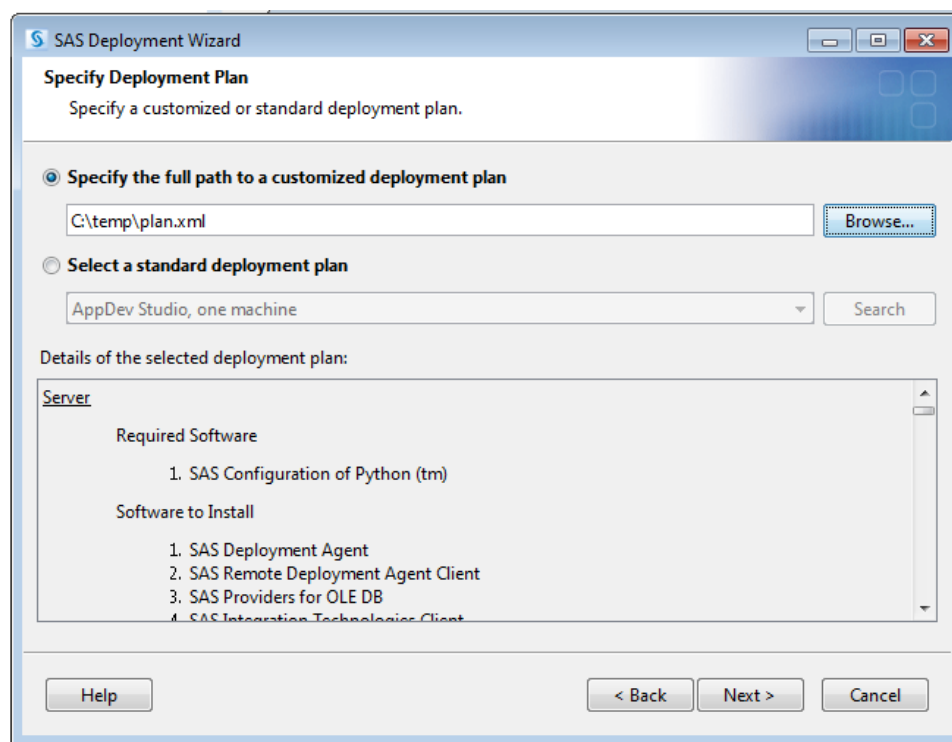
STEP 7 :

Select Deployment Type :

> Perform a Planned Deployment

> Install SAS Software

> Next



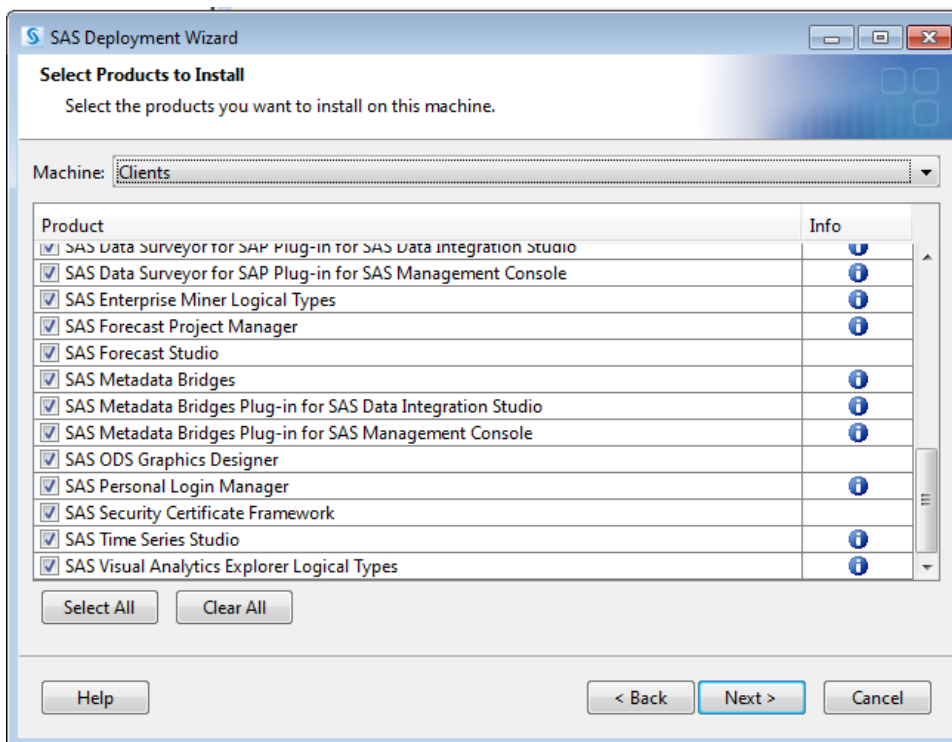
STEP 8 :

Specify Deployment plan:

Go on the directory plan_files of your SAS DEPOT

> SAS_DEPOT_CLIENT_ONLY\plan_files\plan.xml

> Next



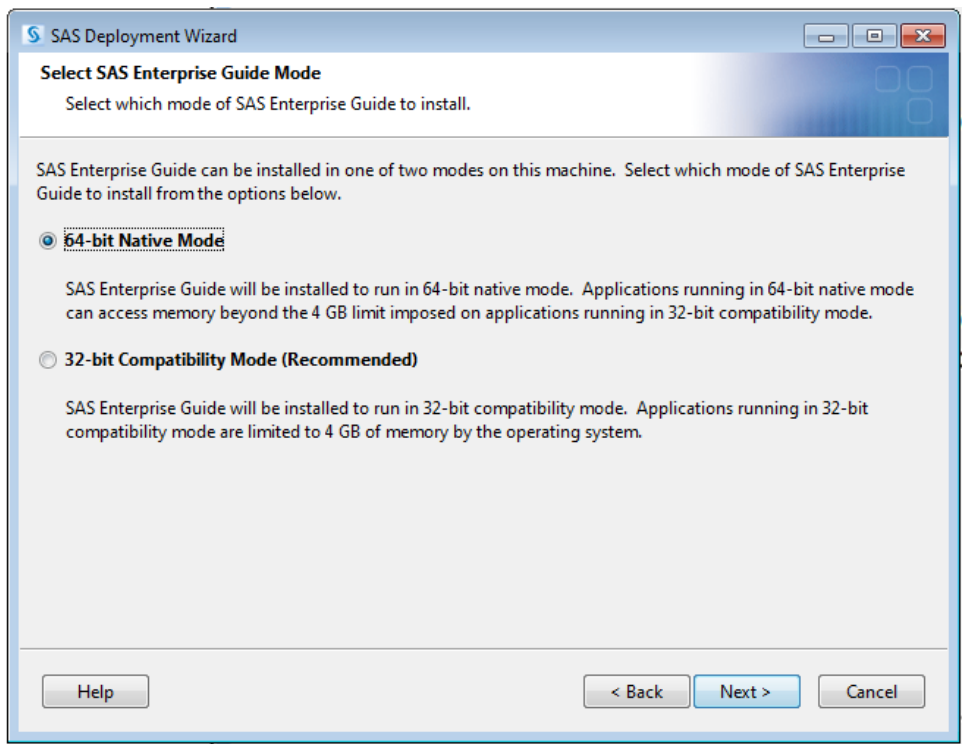
STEP 9 :

Select Products to install :

> Machine : Clients

> Select All
Or you specific SAS Tools

> Next

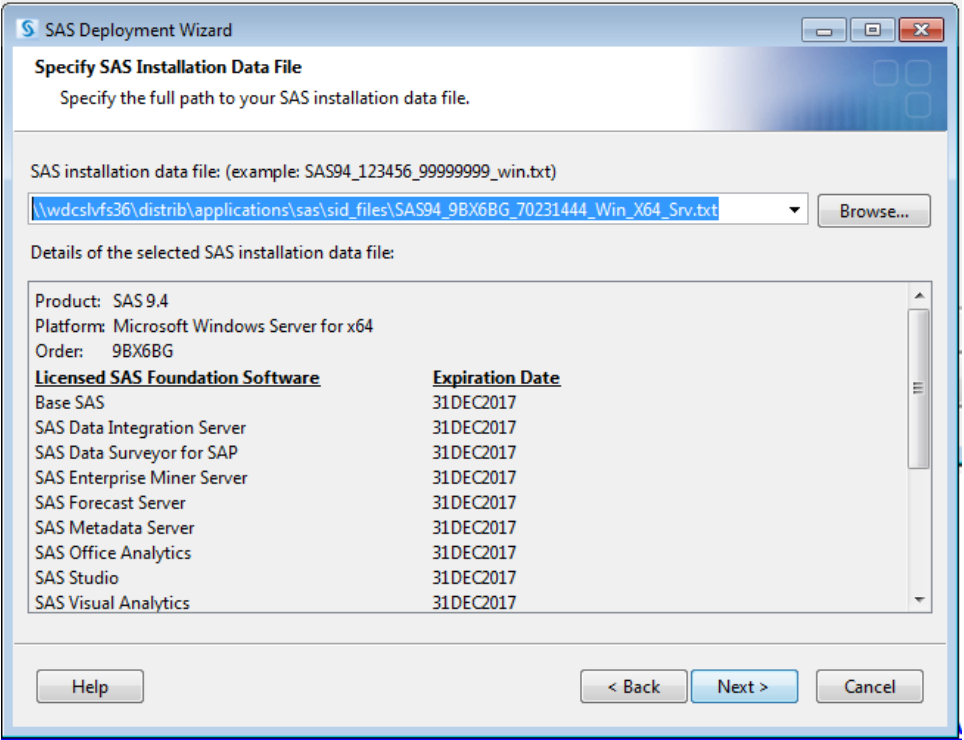


STEP 10 :

Select SAS enterprise Guide Mode

> 64-bit Native Mode

> Next



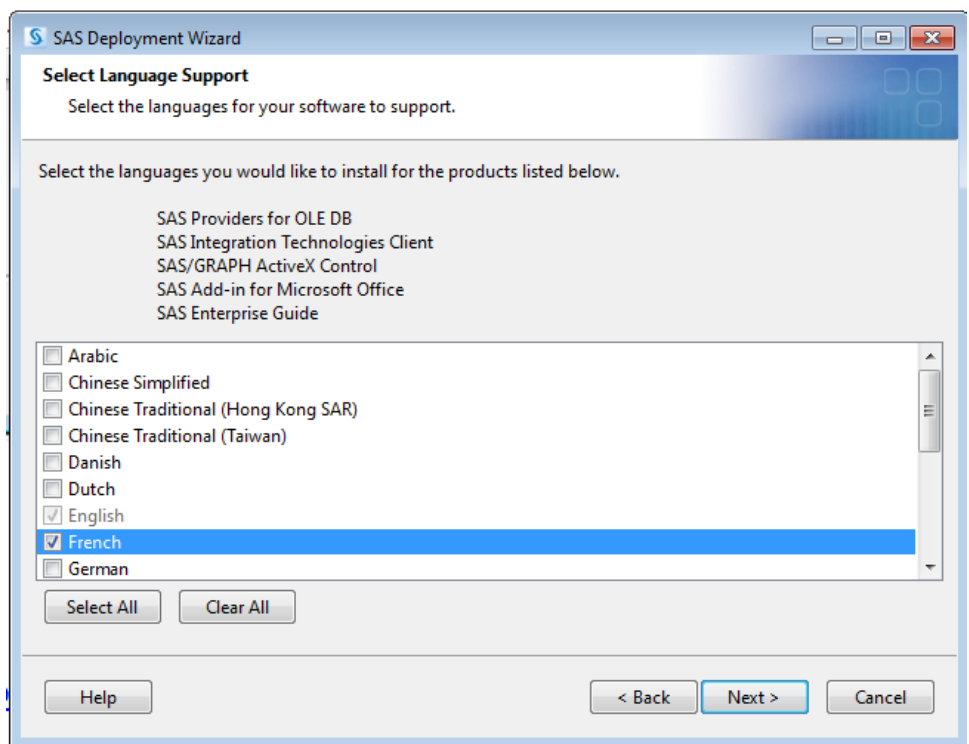
STEP 11 :

Specify SAS Installation Data File (SID)

Go on the directory sid_files of your SAS DEPOT

> SAS_DEPOT_CLIENT_ONLY\sid_files\
SAS94_9BXMQT_70231444_Win_X64_Srv.txt

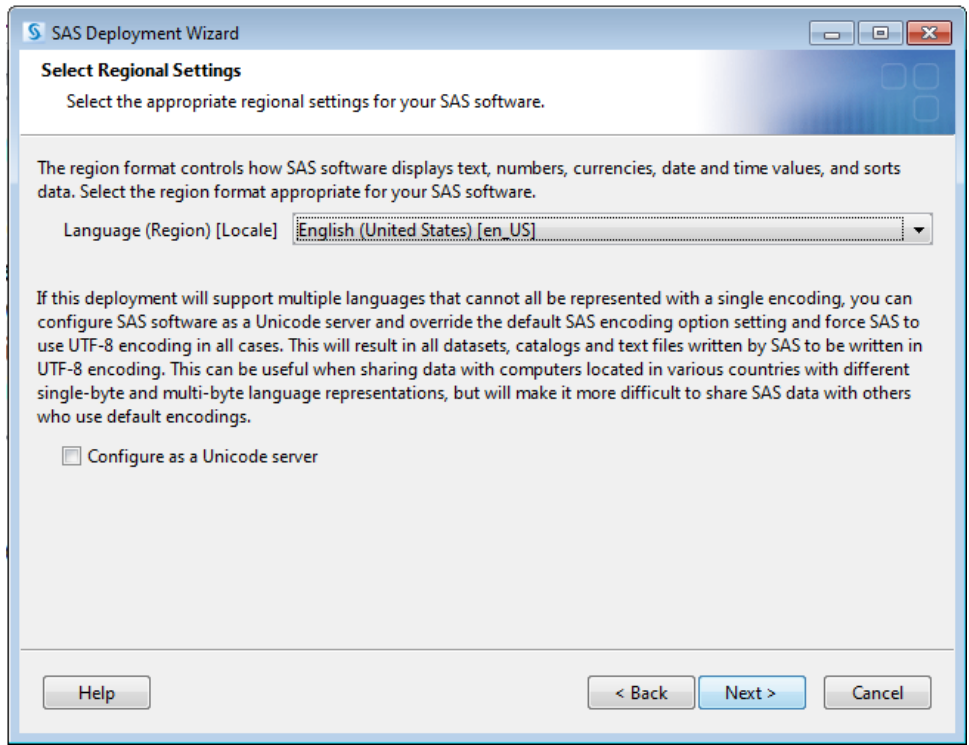
> Next



STEP 12 :

Select Language Support
By Default in English,
but you can add

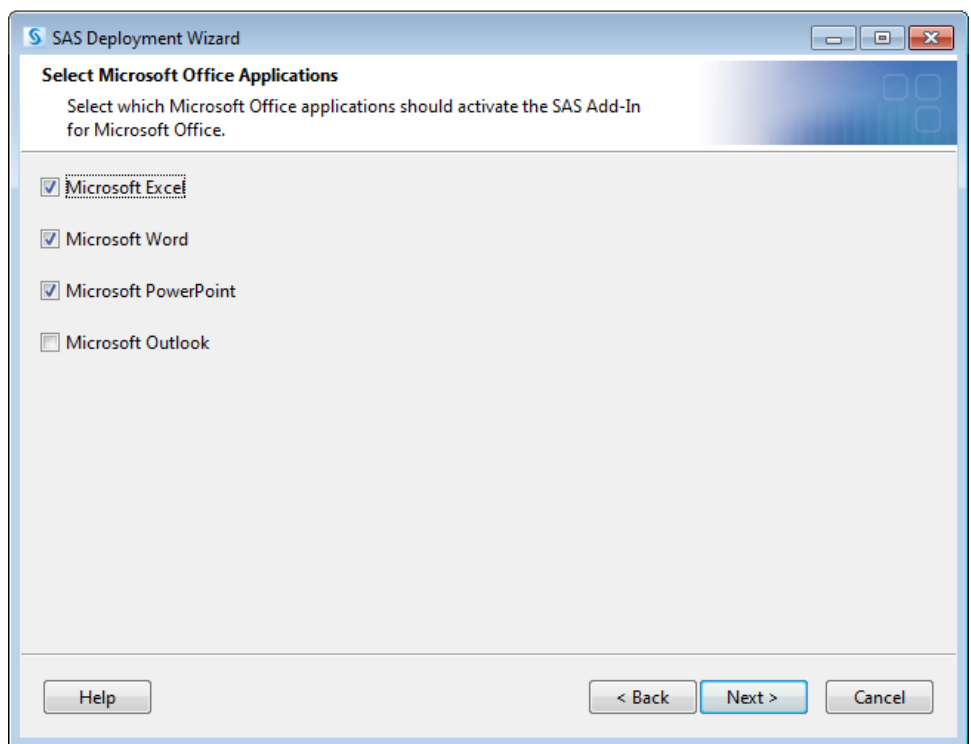
- > French
- > Next



STEP 13:

Select Regional Setting

- > English US
- > Next

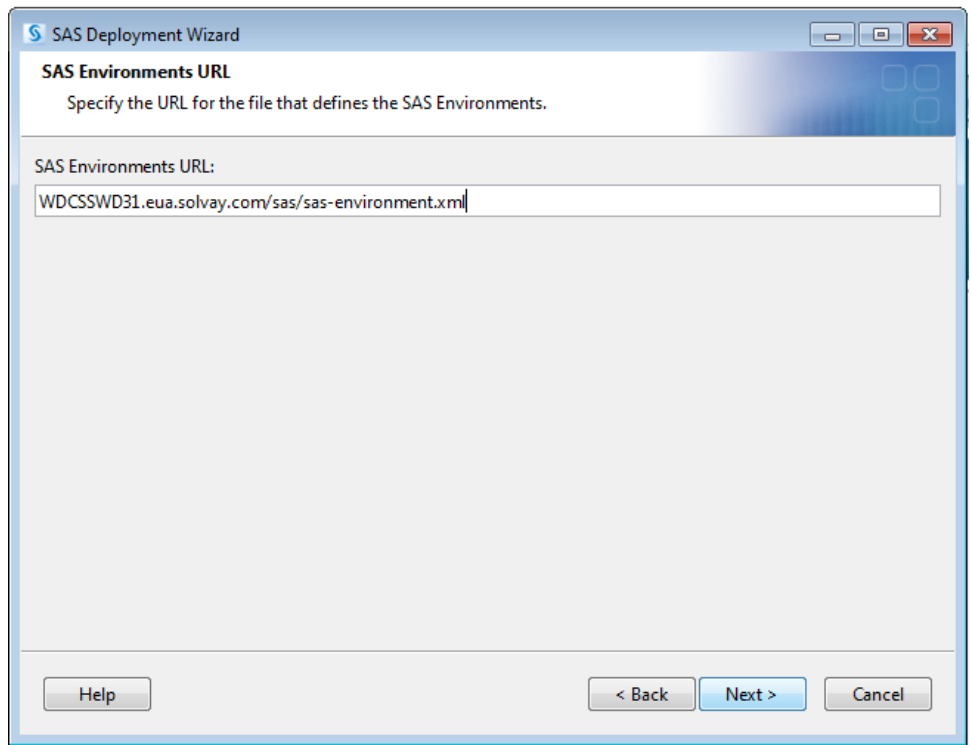


STEP 14 :

Select Microsoft Office Applications,

where Menu SAS Addins Office must be present

- > Excel
- > Word
- > PowerPoint
- > Next



STEP 15 :

SAS Environments URL ;

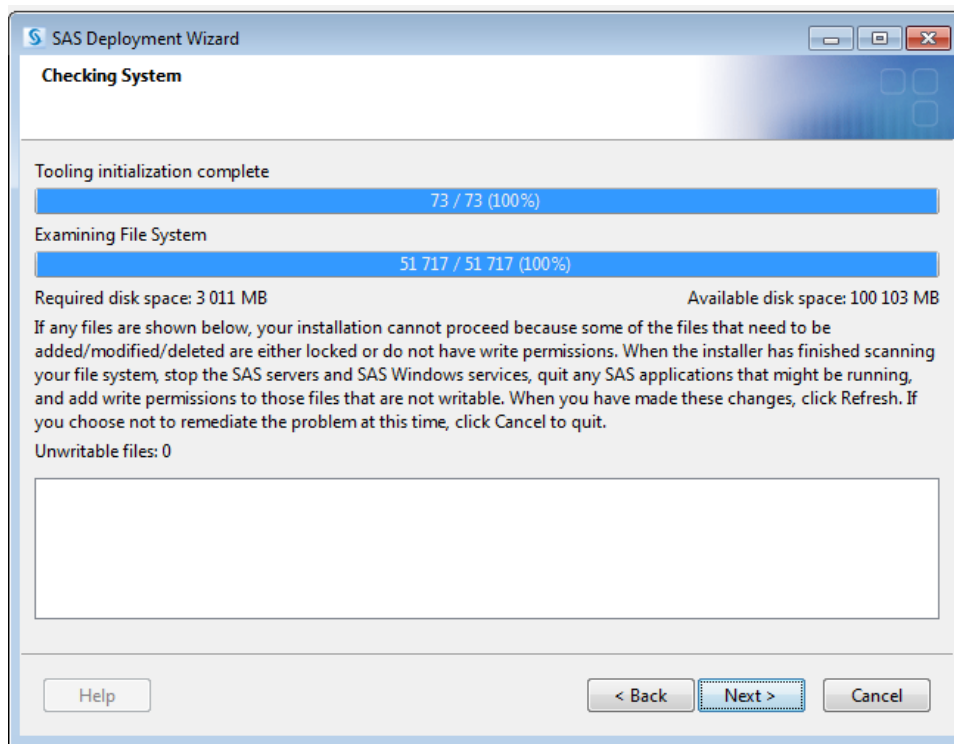
Depend of your SAS Web Server

In this example server : wdcsswd31

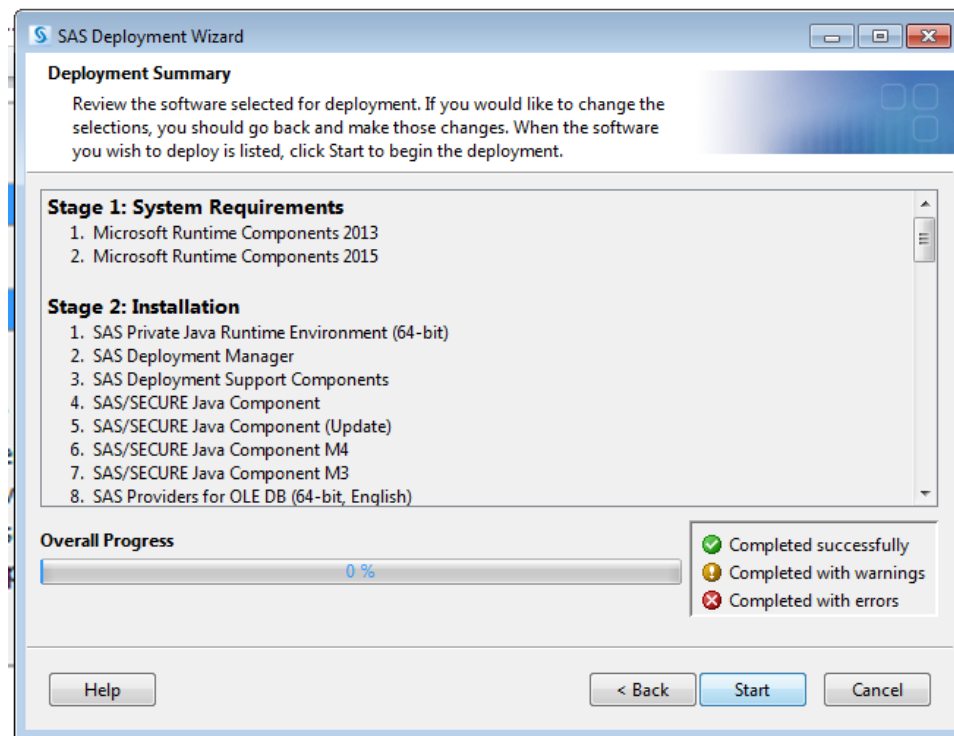
>

<http://wdcsswd31.eua.solvay.com/sas/sas-environment.xml>

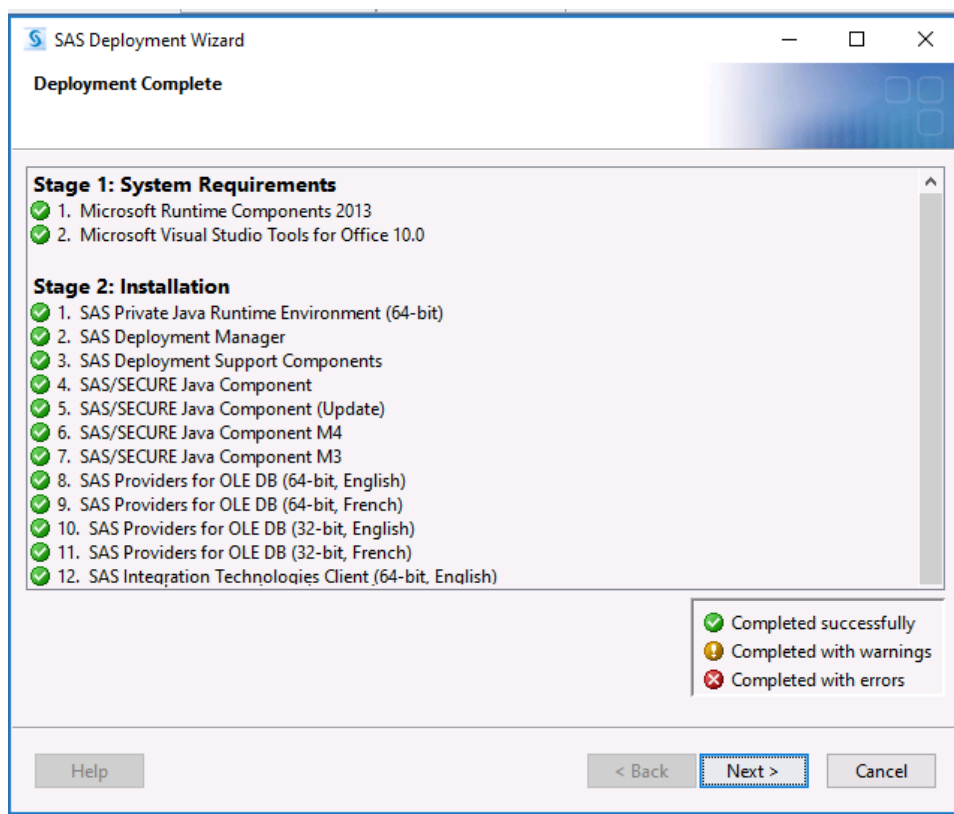
> Next



STEP 16 :
 Checking System,
 Depend of SAS product
 to install
 > Next



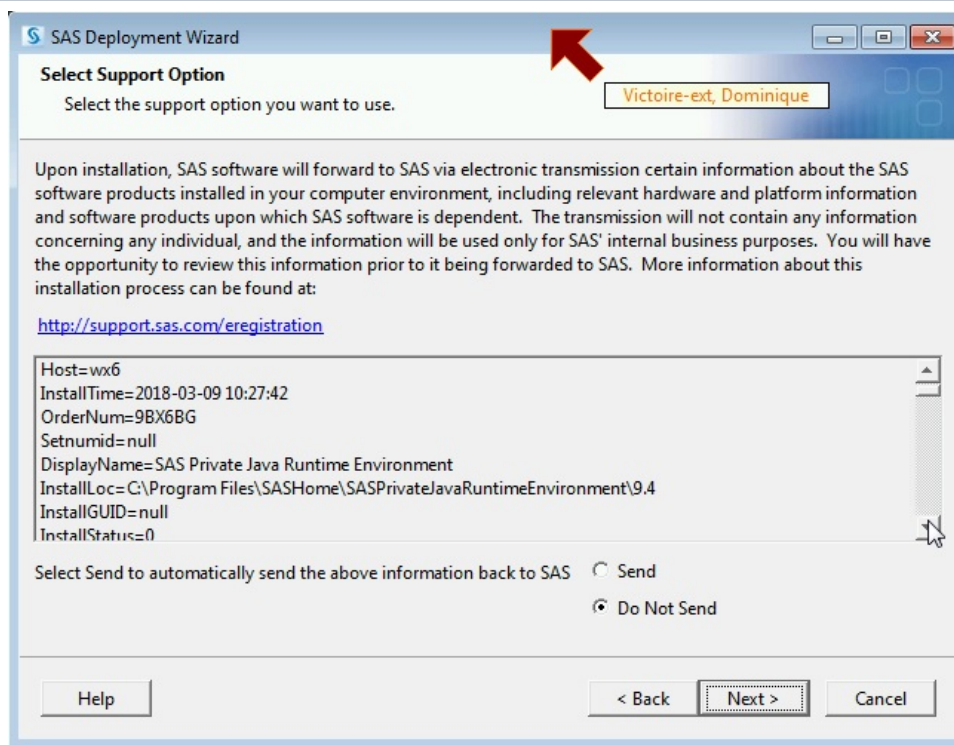
STEP 17 :
 Deployment Summary,
 Depend of SAS product
 to install
 > Start



STEP 18 :

Deployment completed, Depend of SAS product to install

> Next

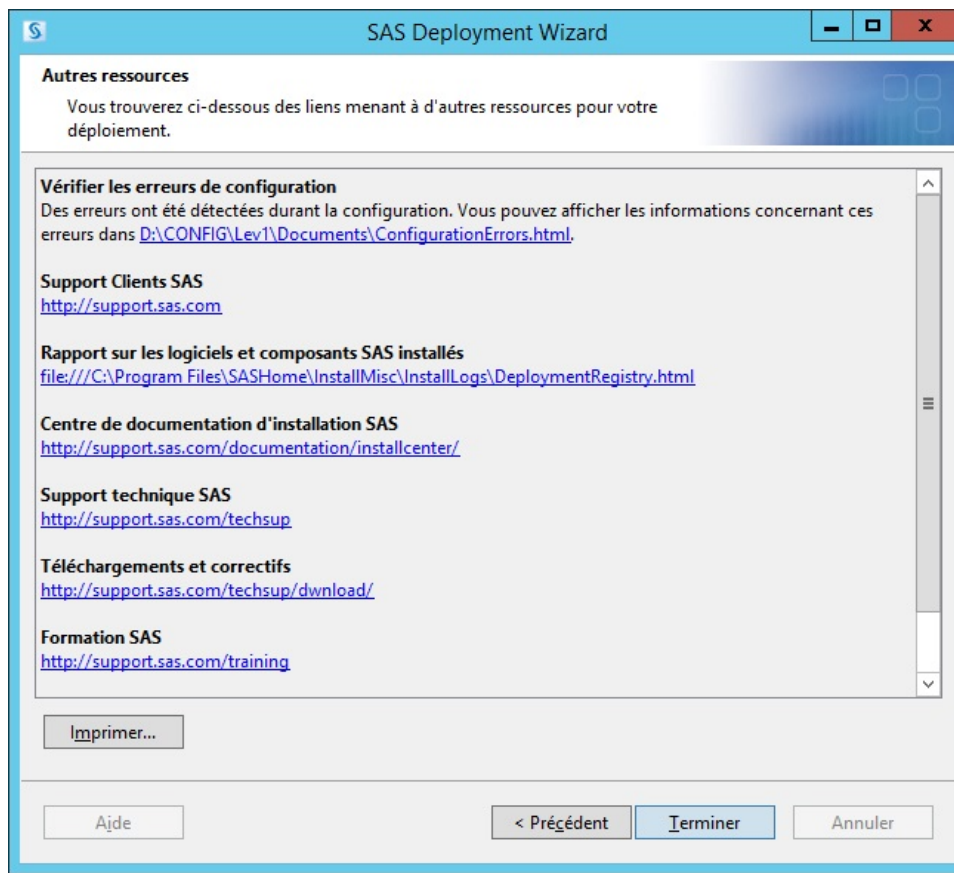


STEP 19 :

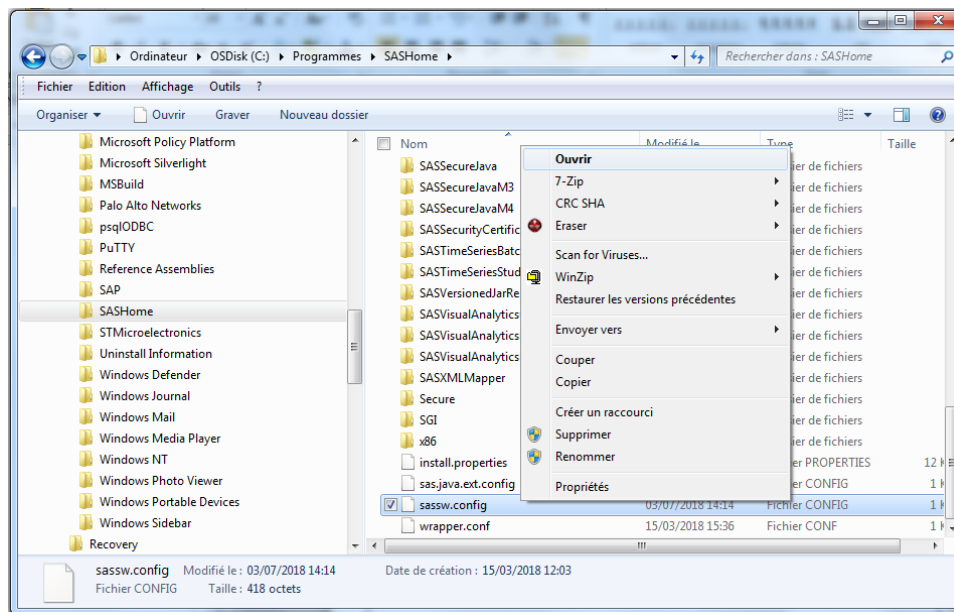
Select Support Option

> Do not send

> Next



STEP 20 :
 Others resources
 > Finish



Step 21 :
 Configure Environment URL
 Open file : C:\Program Files\SASHome\sasw.config
 In this example server : wdcswd31
 Put variable `SASENVIRONMENTSURLto` :
<http://wdcswd31.eua.solvay.com/sas/sas-environment.xml>
 Save file