



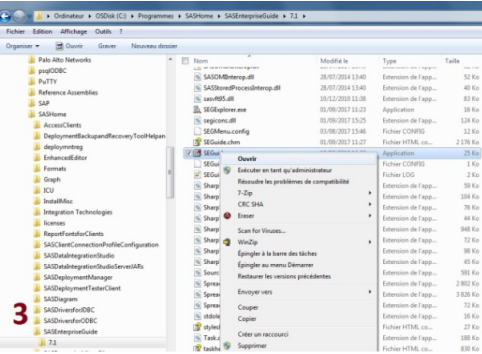
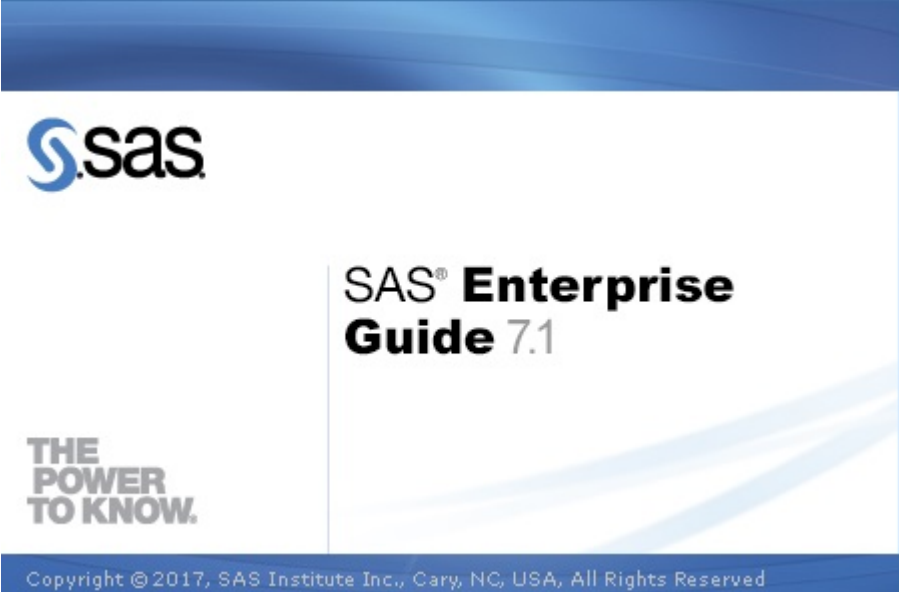
# Configure Profile in SEG

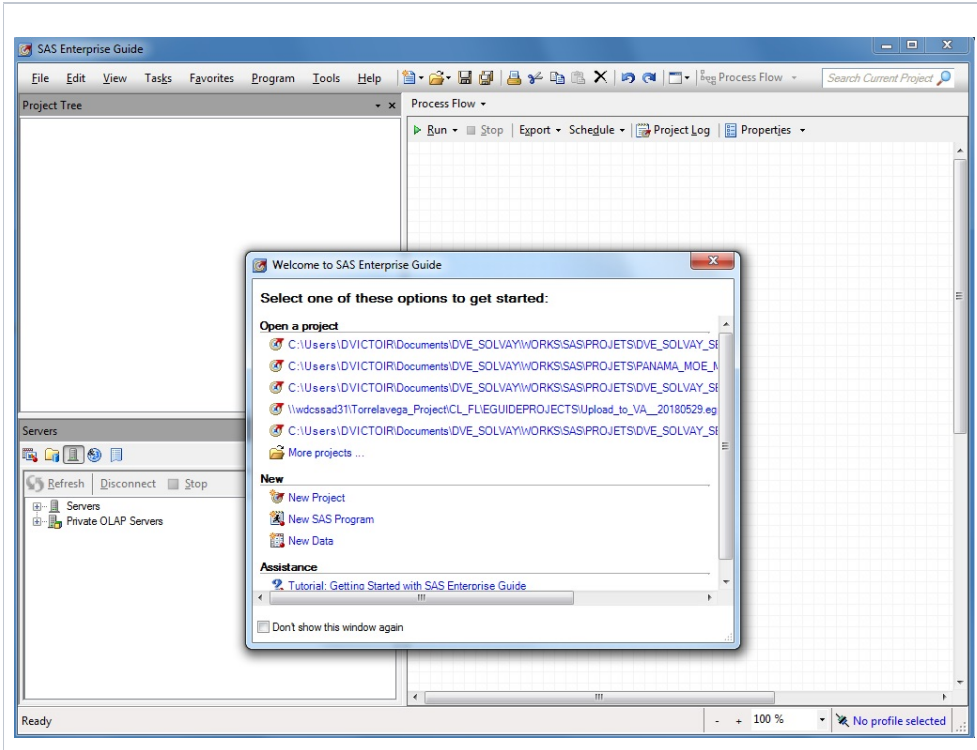
## Configure Profile in SAS Enterprise Guide :

Before follow this Wiki Page, you must complete step:

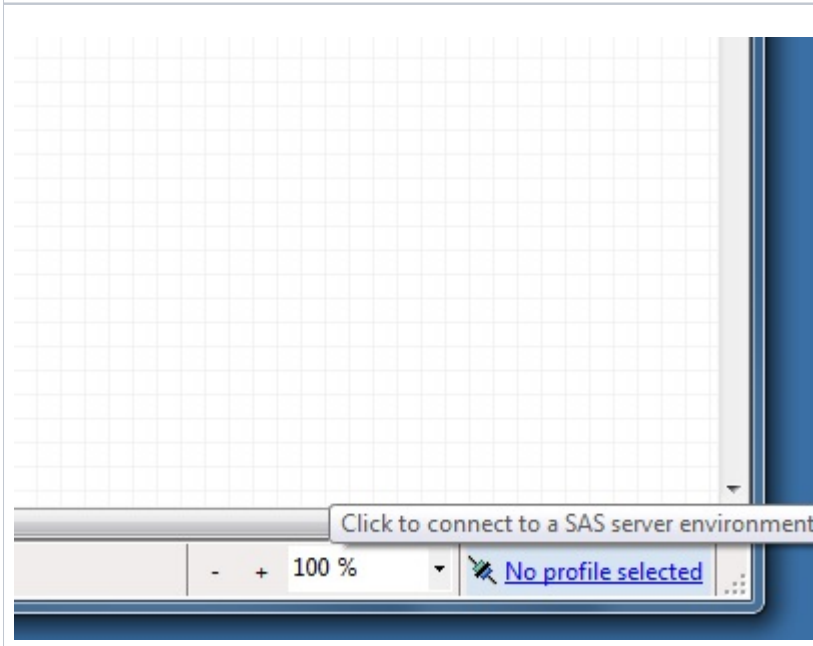
- SAS Getting Started
  - Get privilege Access to SAS Platform :
  - Define SAS Client Type :
  - Install SAS Client software

For create a new profile follow this step by step procedure

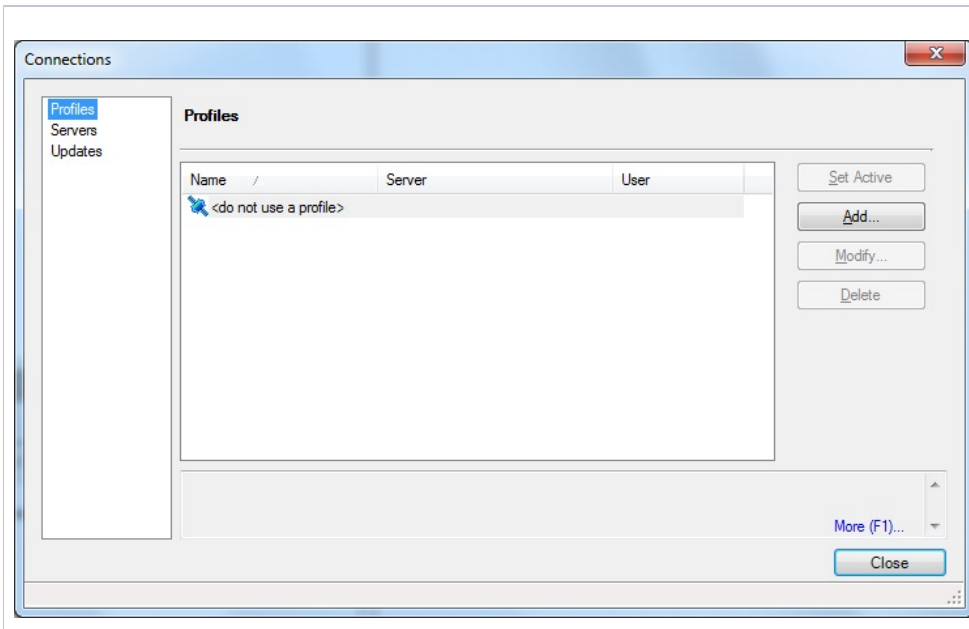
 <p>1</p>	 <p>2</p>	 <p>3</p>	<p>STEP 1 :</p> <p>Launch SAS Enterprise Guide : 3 method</p> <p>1 : in the Shortcut Bar</p> <p>2 : In the Windows Menu</p> <p>3 : From the EXE file C:\Program Files\SASHome\SASEnterpriseGuide\7.1</p>
 <p>Copyright © 2017, SAS Institute Inc., Cary, NC, USA, All Rights Reserved</p>			<p>STEP 2 :</p> <p>SEG Opening</p>



Step 3 :  
Close Welcome Windows



Step 4 :  
Go on the link : **No Profile selected**, on the bottom right screen



Step 5 :

> Profiles > Add

**Create Profile**

Name: PROJECT\_ENV\_SERVER@LOGIN

Description: PROJECT\_ENV\_SERVER@LOGIN

Server:  Remote  Local Port: 8561

Machine: SERVER

Set proxy list for metadata server

Use Integrated Windows Authentication

Save login in profile

User: EUA/LOGIN Password: \*\*\*\*\*

Authentication domain:

Connect On Exit

Save Cancel

Step 6 :

Best Practice for Profil Name : PROJECT\_ENV\_SERVER@LOGIN

- PROJECT : The project Name
- ENV : Your environment (DEV, PRD,TST, SAND\_BOX,...)
- SERVER : Short Name Server
- LOGIN : Your Account

Complete access information's

> Names : PROJECT\_ENV\_SERVER@LOGIN

> Description : PROJECT\_ENV\_SERVER@LOGIN

Server:  
> Remote

Machine :  
> SERVER

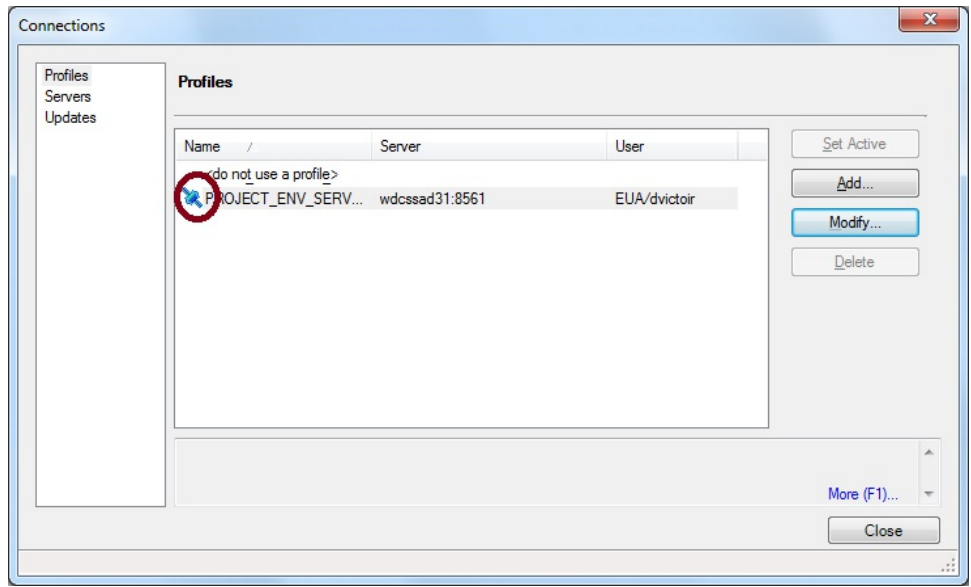
Use Integrated Windows Authentication

Or Fill:  
> Save login in profile

User : EUA /LOGIN  
Pasword : \*\*\*\*

> Connect On Exit

> SAVE

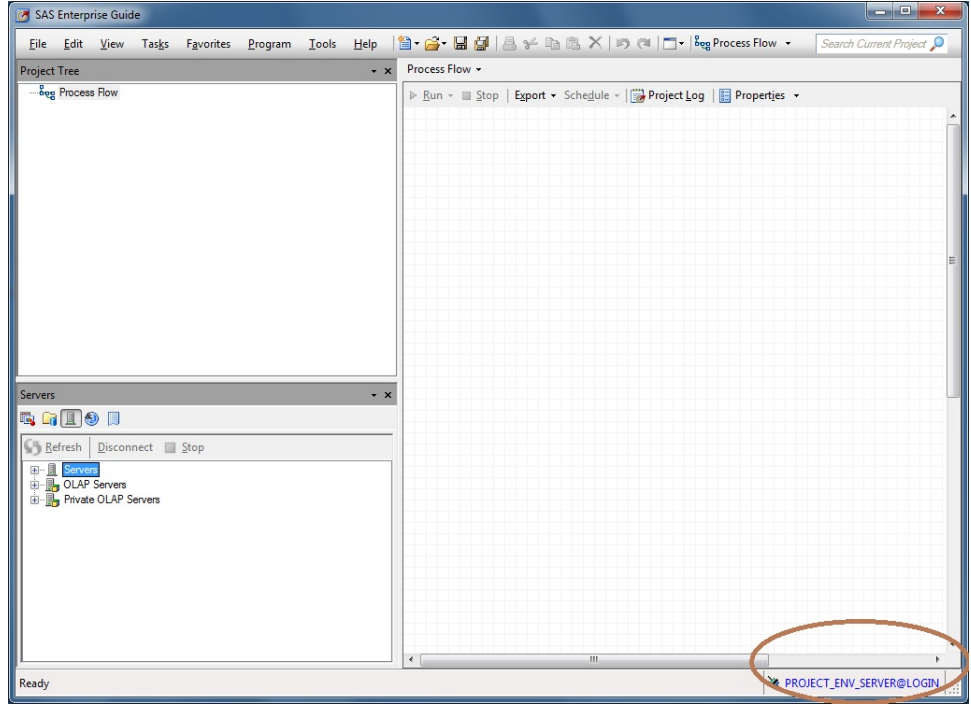


Step 7 :

Validate Access 1

Specific Icon before,  
Profile Name

> Close

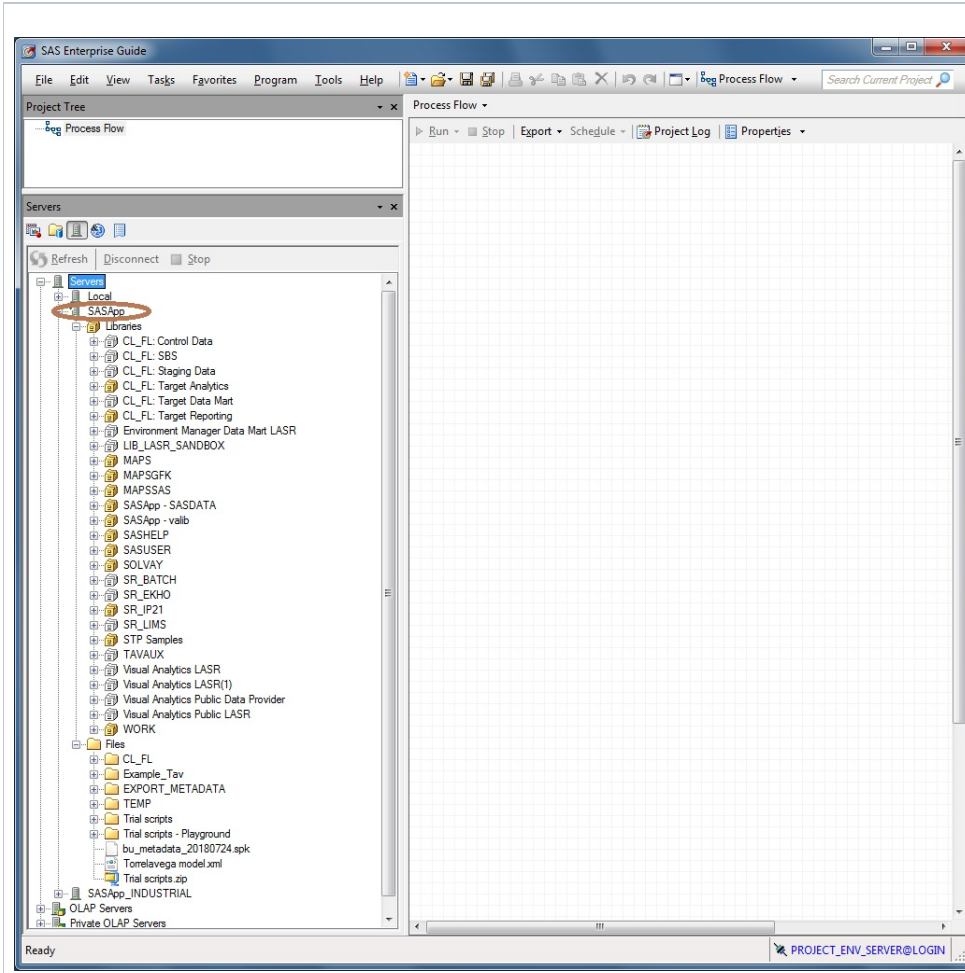


Step 8 :

Validate Access 2

In the Right Bottom,  
you see your Profile :  
PROJECT\_ENV\_SERV  
VER@LOGIN

> On the Servers,  
open list



Step 9 :

Validate Access 3

> On the Servers,  
open list

you must see at least  
one SASApp server

under you must See:

- Libraries
- Files

If you see All,  
profile and  
privilege access to  
the SAS Platform  
it's OK