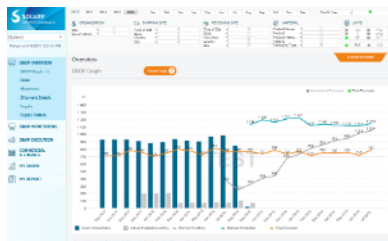


Supply Details



Process Owner

Supply Chain Excellence

Dynasys Expert

Laure Pichot-Plasse

D&PS Expert

Miriam Luttrin

General Description

Target Users

- Demand Planner
- Supply Chain Manager
- Logistics Manager
- Back Office Manager
- Finance
- Account Manager & Customer Care

Authorization & Rights

All the accesses must be validated by:

Supply Chain Excellence

Click here for the [Access form](#) to get access to the Dynasys Dashboard..

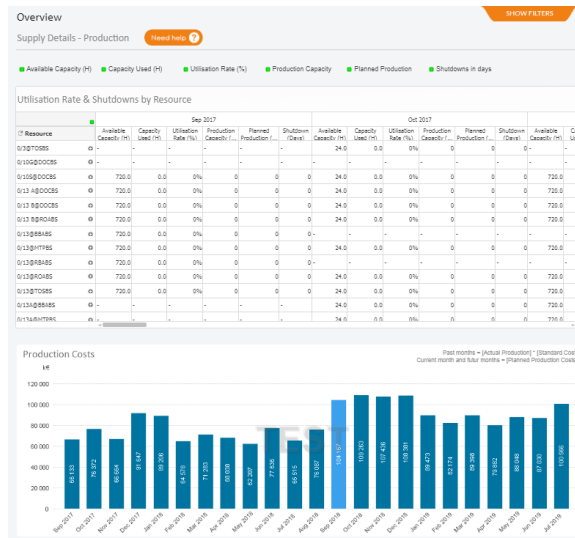
Supply Details Production

This Supply details section covers analyses on both Production details and Specific Supplies.

Utilization Rate & Shutdowns:

The supply details table gives the visibility by Resource of the Utilization Rate of the Production and the Resource shutdowns, including the details;

Available Capacity and Capacity Used in hours and in volumes.



KPIs:

Qlikview	Dynasys
Utilization Rate (%)	= Capacity Used (H) / Available Capacity (H) * 100
Available Capacity (H)	
Capacity Used (H)	
Available Capacity (Volume)	
Capacity Used (Volume)	
Production Costs	Past months = [Actual Production] * [Standard Cost] Current month and future months = [Planned Production] * [Standard Cost]

Supply Details - Specific Supplies:

KPIs:

