

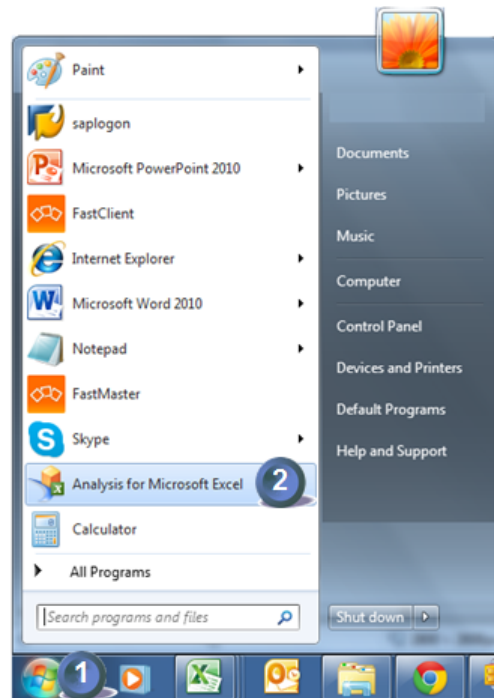
BW Query : Physical inventory coverage rate

To get BW installed : Business warehouse

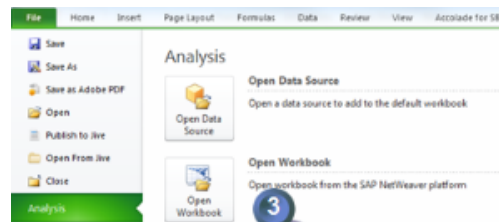
The reference for the coverage rate is the BW query physical inventory coverage rate

1 - How to run the query ?

1. I open **Start** menu
2. I open **Analysis for Microsoft Excel** in the Start Menu / All program

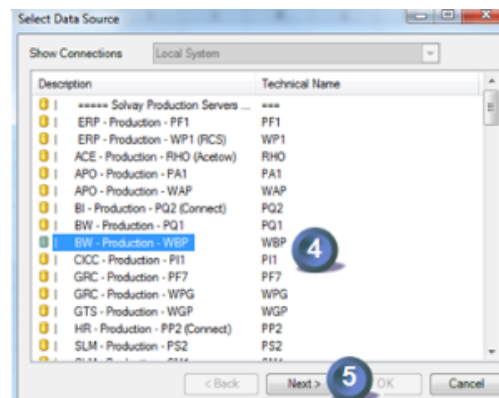


3. In **File** tab, I select **Analysis**. Then I click icon **open workbook** (from SAP NetWeaver)

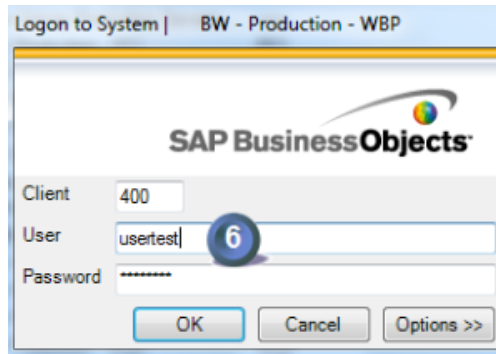


4. I select the data source **BW - Production - WBP**

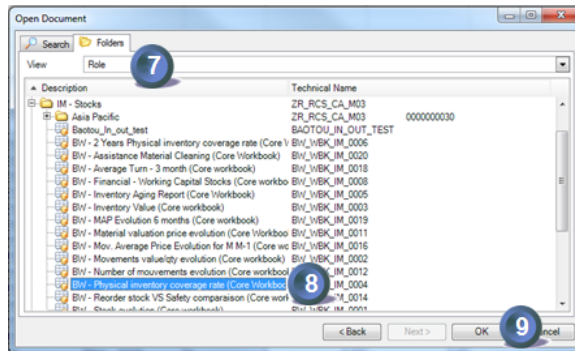
5. And I click on **Next**



6. Enter user and password



7. Select folders tab and then choose **Role** in order to select core workbooks

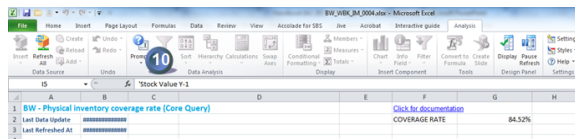


8. Open the workbook **physical inventory coverage rate (core workbook)**

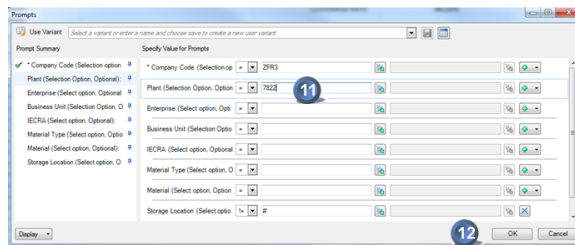
9. Press OK



10. Click on (Analysis tab)



11. Enter the data you want to display in the report. Here is only mandatory the company code.



12. Press ok

There are two spreadsheets in the file:

- one for the FI (Z120 & Z125)
- one for other type of materials

Storage Location	Material Plant	Quantity Stock (Y-1)	Material Inventory (Y)	Unit Price Y-1	Stock Value Y-1 (Y-1 Qty * Y-1 Price)	Inventory Value Y-1 (Value Y-1 * Qty)
Overall Result					4,116,524.77 EUR	429,990.42 EUR
41801724	ROBNET A SOUPAPE SEMI ON 65 PH 1X	2 PC	1	1,094.13 EUR	2,188.26 EUR	2,188.26 EUR
41801727	ROBNET A SOUPAPE DN21 / FACER	2 PC	1	60.19 EUR	120.38 EUR	120.38 EUR
41801728	ROBNET TOURNANT SPHER_3C DN15 MOUD2N	2 PC	1	529.00 EUR	1,058.00 EUR	1,058.00 EUR
41801730	BET TOURNANT SPHER_3C DN15 PNEU MOUD2N	2 PC	1	407.00 EUR	814.00 EUR	814.00 EUR
41801731	BET TOURNANT SPHER_3C DN15 PNEU MOTOR 1002N	2 PC	1	213.00 EUR	426.00 EUR	426.00 EUR
41801732	ROBNET TOURNANT SPHER_3C D.E. DN15 PH42N	2 PC	1	910.00 EUR	1,820.00 EUR	1,820.00 EUR
41801734	ROBNET TOURNANT SPHER_3C DN15 PNEU MOUD2N	2 PC	1	1,449.00 EUR	2,898.00 EUR	2,898.00 EUR
41801735	ROBNET TOURNANT SPHER_3C D.E. DN 50	2 PC	1	1,738.00 EUR	3,476.00 EUR	3,476.00 EUR
41801736	ROBNET TOURNANT SPHER_3C D.E. DN 50	2 PC	1	1,190.00 EUR	2,380.00 EUR	2,380.00 EUR
41801740	ROBNET VANNE DN50 1000 / 1000	2 PC	1	3,313.00 EUR	6,626.00 EUR	6,626.00 EUR
41801748	SOUPAPE SARAG 82030 A WBC A	2 PC	1	884.00 EUR	1,768.00 EUR	1,768.00 EUR
41801749	SOUPAPE SARAG 82030 A WBC B	2 PC	1	500.00 EUR	1,000.00 EUR	1,000.00 EUR
41801750	SOUPAPE SARAG 82030 A WBC 100	2 PC	1	1,640.00 EUR	3,280.00 EUR	3,280.00 EUR
41801751	SOUPAPE SARAGIN 82030 A WBC 100	2 PC	1	281.00 EUR	562.00 EUR	562.00 EUR
41801754	VANNE PATELON DN 100 PH 16 1000	2 PC	1	242.00 EUR	484.00 EUR	484.00 EUR
41801755	SUBAN ENCLUSEUR P100P CH 700	2 PC	1	75.50 EUR	151.00 EUR	151.00 EUR
41801756	BOULE D'INDICATA WBC - 1000 (SIMPRES 100)	2 PC	1	62.20 EUR	124.40 EUR	124.40 EUR

2 - Why the coverage rate is lower than expected ?

- Answer 1 : The physical inventory is not finished
- Answer 2 : There is no more quantity of some materials that were in the inventory at last year end
- Answer 3 : Inventory flag is updated in BW on Saturday

For question related to physical inventory procedure in RCS, please refer to APM training document :



Warehouses in IM



Warehouses in WM

ANSWER 1

The physical inventory is not finished

There are 7 steps in a physical inventory in MM when there is no variance and 10 steps when a recount is needed

Physical inventory creation	MI31	
Inventory count from printing	MI21	
Physical stock calculation	Out of RCS	
Inventory count entry	MI04	counted
Inventory count differences printing	MI20	
Inventory count differences validation	MI07	validated
Results display	MB03	
Inventory recount if needed	MI11	
Inventory recount entry	MI04	counted
Inventory recount differences validation	MI07	validated

A physical inventory is taken into account in the BW query when the status is validated (step 6 & 10)

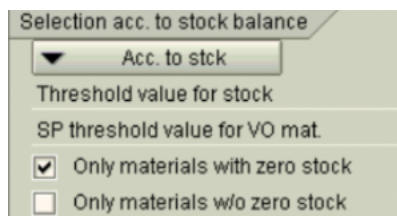
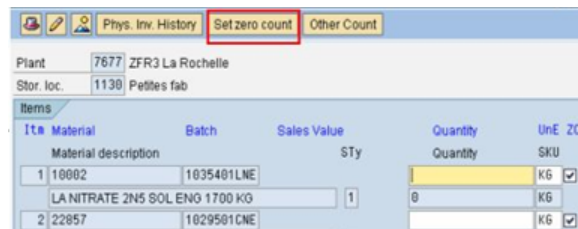
ANSWER 2

There is no more quantity of some materials that were in the inventory at last year end

The reference used by the calculation of the coverage rate is the inventory at the end of the previous year.

It is recommended to count all inventories even if the quantity is equal to zero and follow this procedure :

- Create the inventory document with MI13 and select "only materials with zero stock". If necessary you can change in the control section to the relevant "MA. no. items/doc"
- In MI04 (inventory count) click on "set zero count" => All item ZC box will be checked
- Validate with MI07
- Create a new inventory document with MI31 and select materials "only materials w/o zero stock" and complete the procedure



ANSWER 3

Inventory flag is updated in BW on Saturday

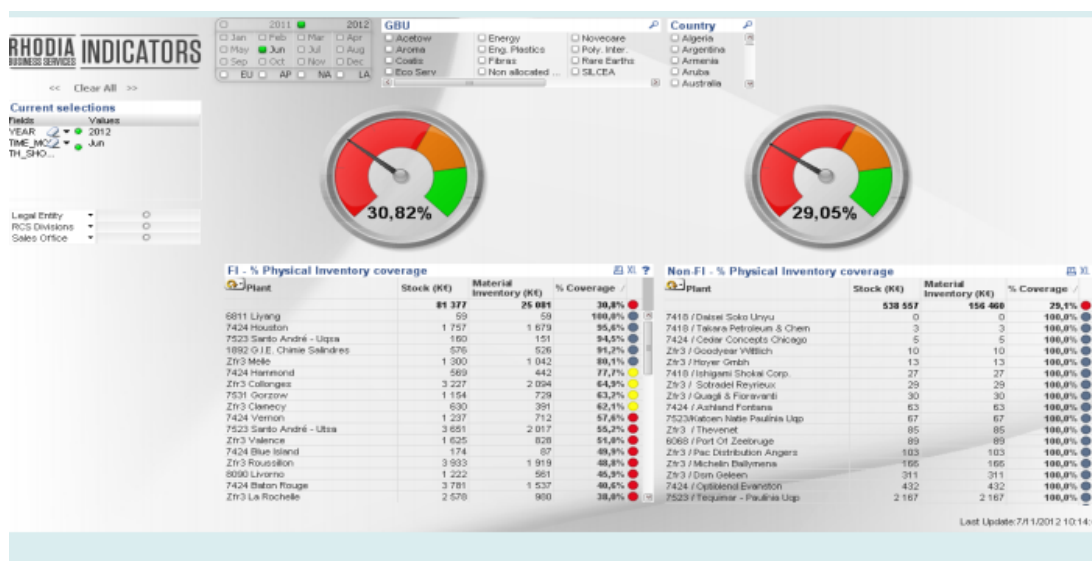
The query reports the coverage rate as of last friday night.

3 - E-mail validation from GCCO

- By September coverage rate in value is above 80% of prior year-end value for the FI, and above 90% for other type of material knowing that each reference is counted every 3 years for manufacturing supplies and every year for all other types of materials.
- In case of exceptions to the rules defining the physical coverage rate for year end, the FRA publishes last quarter physical inventory planning and require GCCO validation.
- The validation mail is posted in the Electronic Control Evidence Depository

For information : SBS dashboard - Coverage rate indicator

Inventory coverage rates are followed using this indicator in SBS dashboard



To receive automatic broadcast

Either you run the query as previously explained or you can receive automatically a monthly broadcast

Unable to render {include} The included page could not be found.