

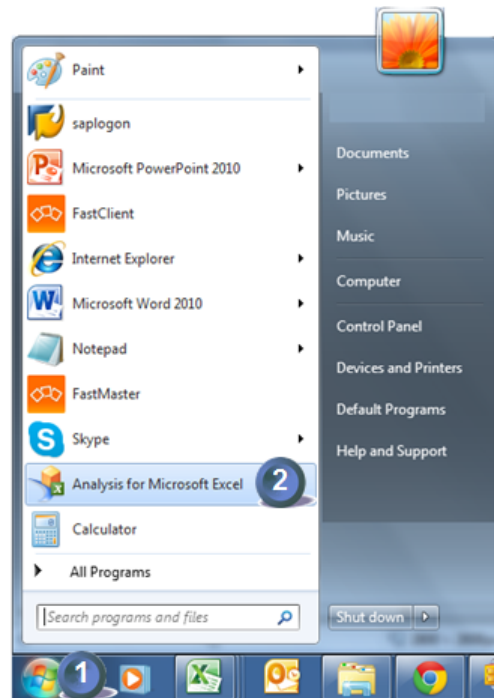
BW Query : Physical inventory coverage rate

To get BW installed : Business warehouse

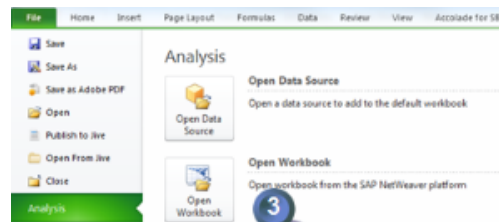
The reference for the coverage rate is the BW query physical inventory coverage rate

1 - How to run the query ?

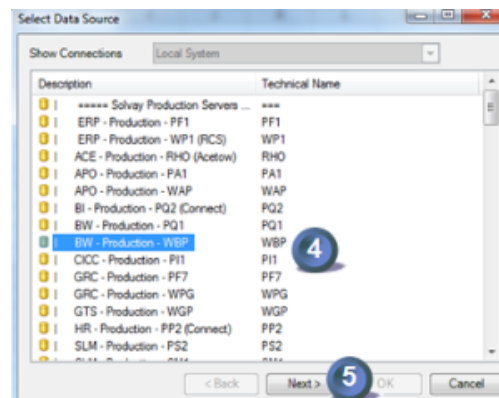
1. I open **Start** menu
2. I open **Analysis for Microsoft Excel** in the Start Menu / All program



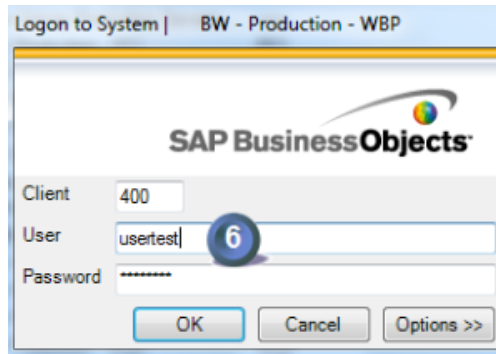
3. In **File** tab, I select **Analysis**. Then I click icon **open workbook** (from SAP NetWeaver)



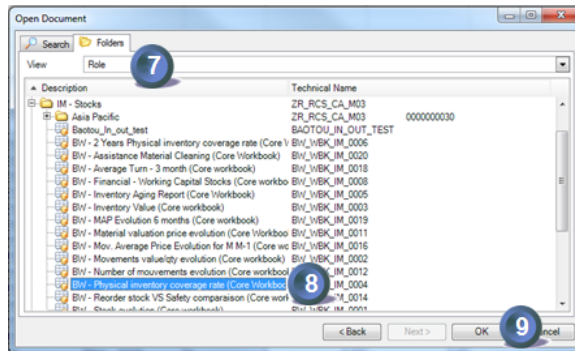
4. I select the data source **BW - Production - WBP**
5. And I click on **Next**



6. Enter user and password



7. Select folders tab and then choose **Role** in order to select core workbooks

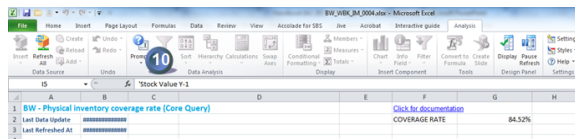


8. Open the workbook **physical inventory coverage rate (core workbook)**

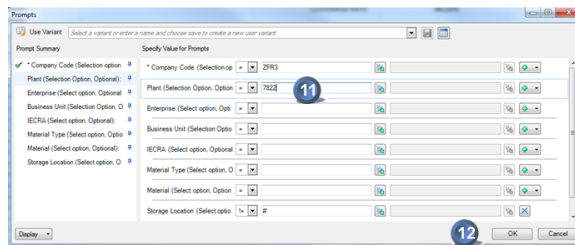
9. Press OK



10. Click on (Analysis tab)



11. Enter the data you want to display in the report. Here is only mandatory the company code.



12. Press ok

There are two spreadsheets in the file:

- one for the FI (Z120 & Z125)
- one for other type of materials

Material has been counted the current year
Blank: Material has not been counted the current year

List of materials in inventory at the end of the previous year

2 - Why the coverage rate is lower than expected ?

- Answer 1 : The physical inventory is not finished
- Answer 2 : There is no more quantity of some materials that were in the inventory at last year end
- Answer 3 : Inventory flag is updated in BW on Saturday

For question related to physical inventory procedure in RCS, please refer to APM training document :



Warehouses in IM



Warehouses in WM

ANSWER 1

The physical inventory is not finished

There are 7 steps in a physical inventory in MM when there is no variance and 10 steps when a recount is needed

Physical inventory creation	MI31	
Inventory count from printing	MI21	
Physical stock calculation	Out of RCS	
Inventory count entry	MI04	counted
Inventory count differences printing	MI20	
Inventory count differences validation	MI07	validated
Results display	MB03	
Inventory recount if needed	MI11	
Inventory recount entry	MI04	counted
Inventory recount differences validation	MI07	validated

A physical inventory is taken into account in the BW query when the status is validated (step 6 & 10)

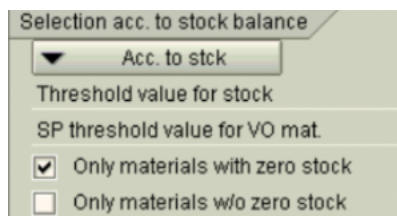
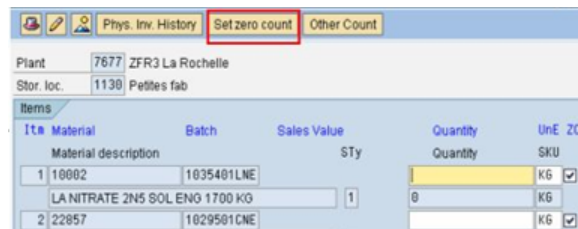
ANSWER 2

There is no more quantity of some materials that were in the inventory at last year end

The reference used by the calculation of the coverage rate is the inventory at the end of the previous year.

It is recommended to count all inventories even if the quantity is equal to zero and follow this procedure :

- Create the inventory document with MI13 and select "only materials with zero stock". If necessary you can change in the control section to the relevant "MA. no. items/doc"
- In MI04 (inventory count) click on "set zero count" => All item ZC box will be checked
- Validate with MI07
- Create a new inventory document with MI31 and select materials "only materials w/o zero stock" and complete the procedure



ANSWER 3

Inventory flag is updated in BW on Saturday

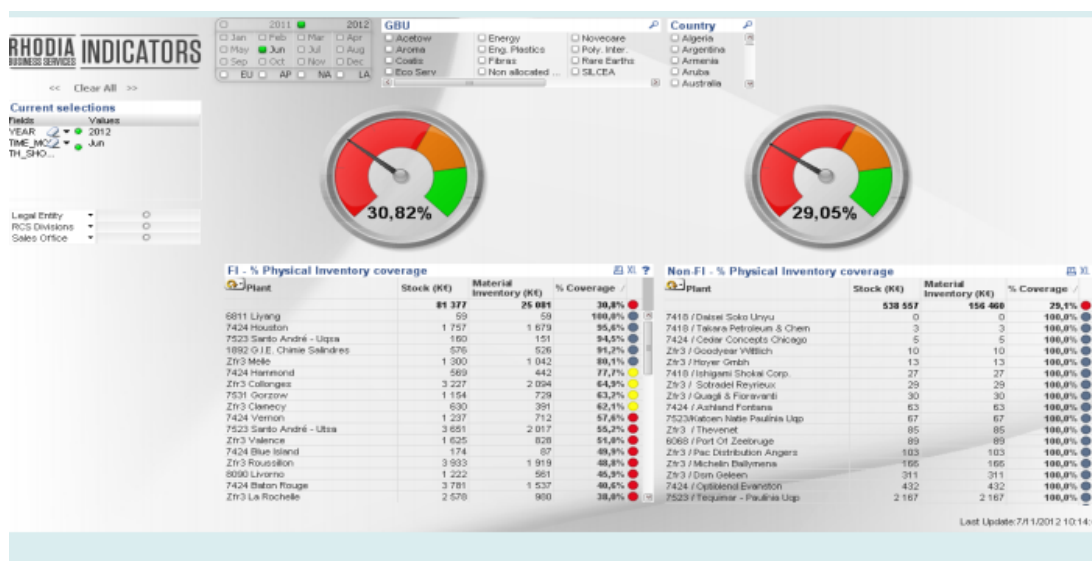
The query reports the coverage rate as of last friday night.

3 - E-mail validation from GCCO

- By September coverage rate in value is above 80% of prior year-end value for the FI, and above 90% for other type of material knowing that each reference is counted every 3 years for manufacturing supplies and every year for all other types of materials.
- In case of exceptions to the rules defining the physical coverage rate for year end, the FRA publishes last quarter physical inventory planning and require GCCO validation.
- The validation mail is posted in the Electronic Control Evidence Depository

For information : SBS dashboard - Coverage rate indicator

Inventory coverage rates are followed using this indicator in SBS dashboard



To receive automatic broadcast

Either you run the query as previously explained or you can receive automatically a monthly broadcast

Unable to render {include} The included page could not be found.