
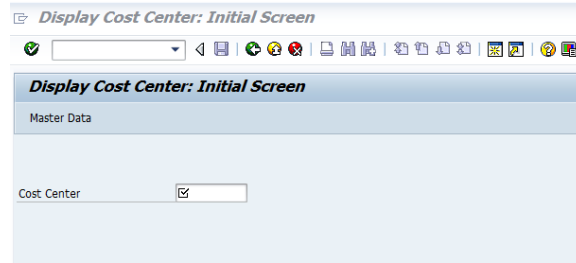


KS03 - Display cost center

STEP 1

Start the transaction using transaction code KS03

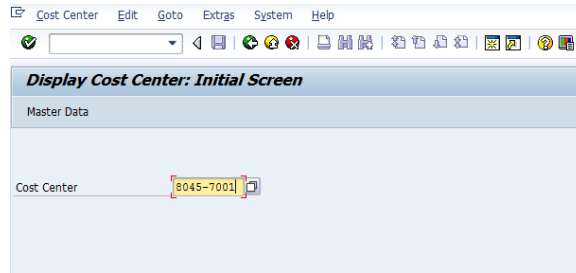
 Display cost center: Initial Screen



STEP 2

Enter the cost center code

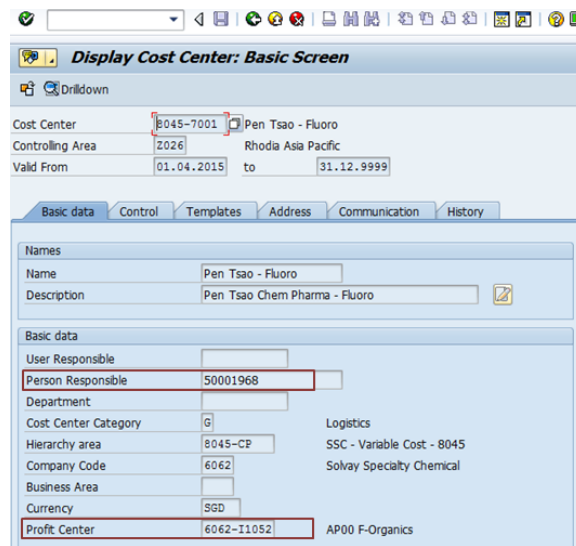
and



STEP 3

The cost center master data are displayed

For example, its responsible or profit center.

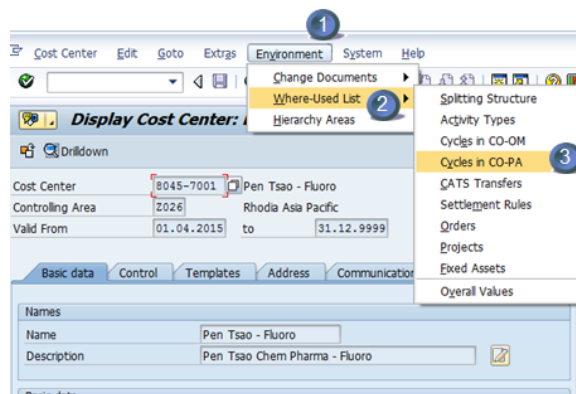


STEP 4

The cycle and the segment in which the cost center is included can be found by clicking .

1. On **Environment**
2. Then **"Where-used List"**
3. and

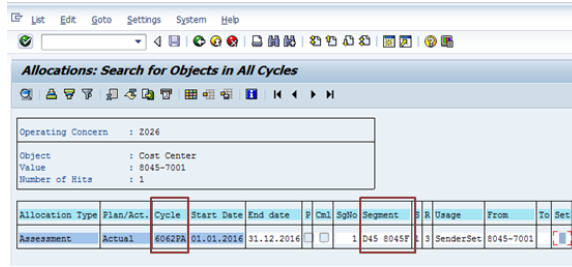
- **Cycles in CO-OM** : for assessment from sender Cost Center to receiver Cost Center /Order/Cost object /WBS
- **Cycles in CO-PA** : for assessment from sender Cost Center to Profitability Analysis



Value Fields (that corresponds to P&L BFC headings)

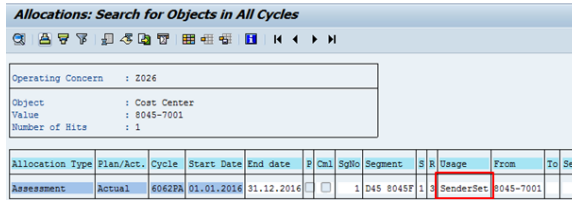
STEP 5

The cycle and segment in which the cost center is included is displayed.




STEP 6

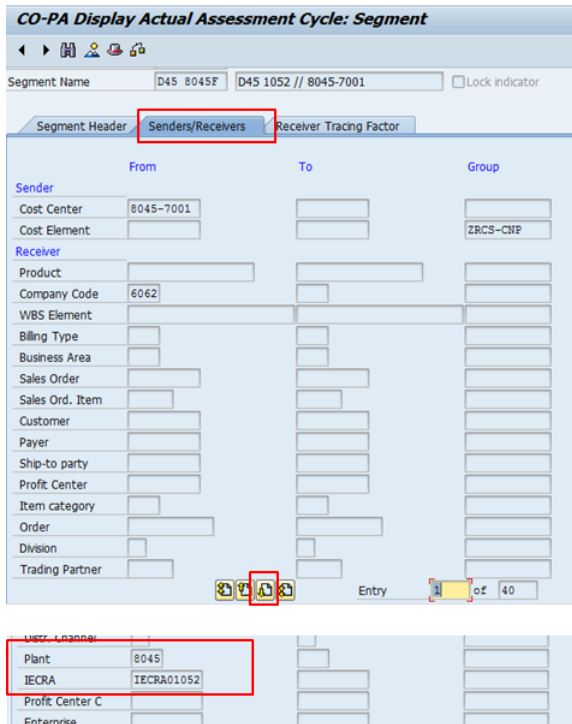
Obtain other information thanks to a double click on "SenderSet" in the column Usage.



STEP 7

Obtain the plant code and the receiver IECRA.

1. Ensure you are in the tab "Senders/Receivers"
2. Use the arrow  to go down.
3. You will find in the list of information Plant code and IECRA.



STEP 8

Select now the tab Segment Header to obtain

1. The assessment cost element or allocation structure
2. Value field
3. Sender value (that display allocation rule and the amount or the % allocate through the allocation process)

CO-PA Display Actual Assessment Cycle: Segment

Operating concern: 2026 Rhodia Asia Pacific
 Cycle: 6062PA 6062 Alloc fr Toller CCs
 Segment Name: D45 8045F D45 1052 // 8045-7001 Lock indicator

Segment Header Senders/Receivers Receiver Tracing Factor

Assessment CElem: 99429900 PA-AS CP

Value Field All: VVD45 D45 VC CC Variance

Alloc. structure:
 PA transfer struct.:

Sender values

Rule: Posted amounts
 Share in %: 100,00

Receiver tracing factor

Rule: Fixed percentages

STEP 9

Select the last tab Receiver Tracing Factor to obtain the portion/percent of allocation from the cost center sender to cost centers receivers (first copy screen) or the allocation to an IECRA (2nd copy screen).

Display Actual Assessment Cycle: Segment

Controlling Area: 2026 Rhodia Asia Pacific
 Cycle: 7897CO 7897 Zhenjiang
 Segment Name: 7897-4007R RZC Controlling Lock indicator

Segment Header Senders/Receivers Sender Values Receiver Tracing Factor

Receivers

Cost Ctr	Portion/percent
7897-1201	14,10
7897-1202	59,20
7897-1203	9,00
7897-1204	17,70

CO-PA Display Actual Assessment Cycle: Segment

Operating concern: 2026 Rhodia Asia Pacific
 Cycle: 6062PA 6062 Alloc fr Toller CCs
 Segment Name: D45 8045F D45 1052 // 8045-7001 Lock indicator

Segment Header Senders/Receivers Receiver Tracing Factor

Receivers

CoCd FInt IECRA	Portion/percent
6062 8045 IECRA01052	100,00