





Costing Run - 5-Marking

 You can go to the step "Marking" when you receive the approval of the FRA

All error  & warning  messages are cleared (in some cases it is not possible to clear warning messages but at least a deep analysis must be performed)

Flow Step	Authorization	Parameter	Execute	Log	Status	Materials	Er.	Still Open
Selection						381	0	
Struct. Explosion						381	0	
Costing						381	0	0
Analysis								
Marking								
Release								

STEP 1

Click on the icon  column « Authorization » / line « Marking » to unlock the padlock.

Edit Costing Run

With Reference

Costing Run: 65770715 Description: Costing August 2015 ZMAT ZVER 6577 Zhuhai
 Costing Run Date: 31.07.2015

Costing data | Dates | Valuation

Costing Variant: 2F0 PC Costing Variant: RCS
 Costing Version: 1 Version w/o Customizing
 Controlling Area: 2026 Rhodia Asia Pacific
 Company Code: 6577 Zhuhai Solvay Spe Chem Co
 Transfer Control:
 Server Group:

Flow Step	Authorization	Parameter	Execute	Log	Status	Materials	Er.	Still Open
Selection						381	0	
Struct. Explosion						381	0	
Costing						381	0	0
Analysis								
Marking								
Release								

STEP 2

All the company appear: when there is a green square, the padlock is open, if the square is red, the padlock is closed.


Click on the company code you want to open and save 

Price Update: Organizational Measure

Posting Period/Fiscal Year: 8 2015

Permitted std cost est variant

Ex.	Costing Variant	Costing Version	Released
	2F0	01	
	6348	Legal Valuation	
	6375	Legal Valuation	
	6526	Legal Valuation	
	6577	Legal Valuation	
	6592	Legal Valuation	
	6743	Legal Valuation	
	6746	Legal Valuation	
	6811	Legal Valuation	
	6857	Legal Valuation	
	6859	Legal Valuation	
	6864	Legal Valuation	
	6872	Legal Valuation	

There is a green square  the costing in the company 6577 can be marked & released

Go back by clicking 

Price Update: Organizational Measure

Posting Period/Fiscal Year: 2015

Ex.	Company Code	Valuation View	Costing Version	Released
6295		Legal Valuation		
6301		Legal Valuation		
6337		Legal Valuation		
6341		Legal Valuation		
6348		Legal Valuation		
6375		Legal Valuation		
6526		Legal Valuation		
6577		Legal Valuation	1	
6592		Legal Valuation		
6743		Legal Valuation		
6746		Legal Valuation		
6811		Legal Valuation		
6857		Legal Valuation		
6859		Legal Valuation		
6864		Legal Valuation		
6875		Legal Valuation		

STEP 3



The padlock is open

The cycle can continue with the marking.



Click on the icon of column **Parameter** on the line **Marking**.

Edit Costing Run

With Reference

Costing Run: 65770715 Description: Costing August 2015 ZMAT ZVER 6577 Zhuhai
 Costing Run Date: 31.07.2015

Costing data | Dates | Valuation

Costing Variant: ZFO PC Costing Variant: RCS
 Costing Version: 1 Version w/o Customizing
 Controlling Area: 2026 Rhodia Asa Pacific
 Company Code: 6577 Zhuhai Solvay Spe Chem Co
 Transfer Control:
 Server Group:

Create Cost Estimate

Flow Step	Authorization	Parameter	Execute	Log	Status	Materials	Er	Still Open
Selection						381	0	
Struct. Explosion						381	0	
Costing						381	0	0
Analysis								
Marking								
Release								

STEP 4

1. Uncheck the test mode.
2. Uncheck "Background Processing"



Save and go back by clicking



Price Update: Mark Standard Price

Processing Options

Test Run ←

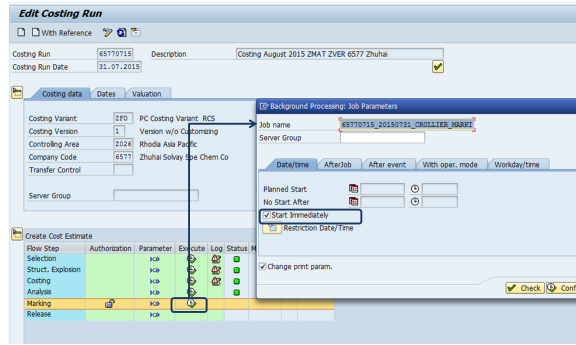
With List Output


Parallel Processing

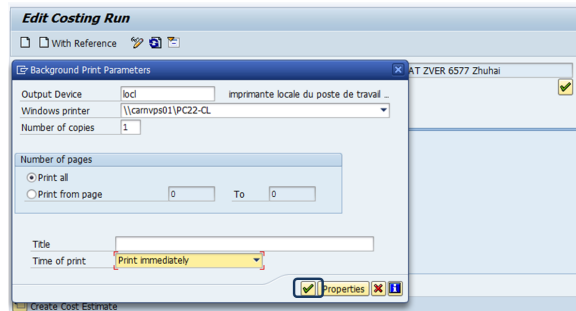
Background Processing ←

STEP 5


1. Click on in the column **Execute** / line **Marking**
2. Check Start Immediately
3. Click on Confirm



The screen "Background Print Parameters" appear, click on 



STEP 6

 After the Marking step is finished, all the materials should be valuated.

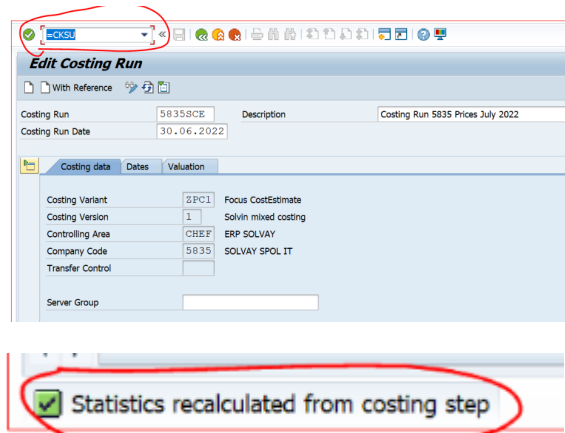
Flow Step	Authorization	Parameter	Execute	Log	Status	Materials	Er.	Still Open
Selection					▲	7007	0	
Struct. Explosion					▲	7007	0	
Costing					▲	7007	0	0
Analysis					▲			
Marking					▲	7006	0	1
Release					▲			

We should not have materials "still open".

Still Open" Materials?

1. Go to CK40N (Edit mode), of the respective Costing run 5835SCE & Date
2. Enter the =CKSU in T-CODE command bar
3. Press enter.

Then, this message will appear and the error will be resolved.



NOTE:

If you have errors, you must identify them by checking the "Log".

The errors should be checked and rectified if possible in the current month. To avoid the same to happen on the next costing run.

Workflow history

This view shows the 5 most recent entries. The complete workflow log is available from the 'Document Activity' menu item.

Jul 22, 2022	Actor	Type	Activity	Version
Published	 Morgado, Filipa	Edit	updated the page at 1:55 pm	
	Lara Alves	State	changed state to Published at 12:07 pm	v32
Draft	Lara Alves	State	gave <i>Approvers</i> approval at 12:07 pm	
	 Morgado, Filipa	State	assigned approval <i>Approvers</i> to Lara Alves at 11:56 am	
		State	changed state to Draft at 11:55 am	v30
Jul 06, 2016				
Published	ROLLIER, Charlotte	State	changed state to Published at 4:12 pm	v29