

# I create a cycle run group

Process: [Costing Model Architecture](#)

Responsibility area: [Maintain cycles](#)

1. **Local Finance** - Information for the cycle run Group;
2. **GBS Service Center** - Create the Cycle Run Group following the Group Rules.

Scope

[blocked URL](#)

Frequency

Monthly

References

- [OP.101](#)
- [OP.101](#)

Attachments

N/A

[OP.009](#) << I create a cycle run group

## Guideline

This request is done normally when a new Company is Created. So normally we don't have direct request to create a Cycle Run Group.

### Need for a Cycle Run group

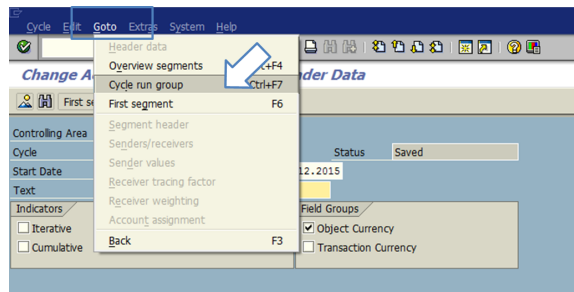
This information is necessary to allow that several users can run cycles at the same time but in different run groups. If several cycles are being run simultaneously in the same run group the system will be blocked. By default the system will fill this field with the run group 0000.

#### STEP 1

Start a transaction to create or modify a cycle (KSUX, KEUX or KSVX)

1. Click **Goto** in the cycle header data
2. Choose

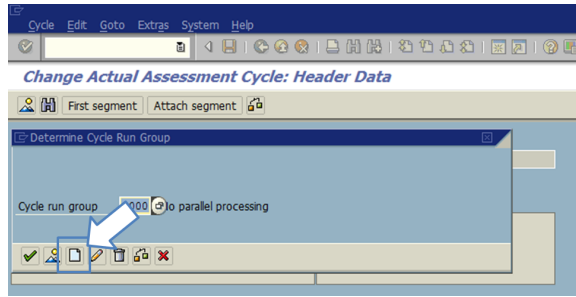
**Cycle run group**



#### STEP 2

Choose create group by clicking







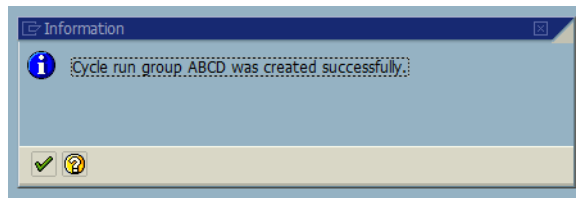
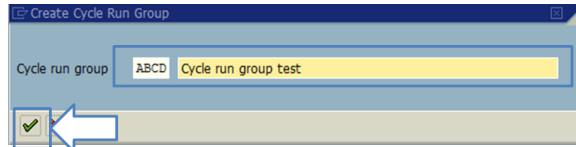
**STEP 3**

**Enter** a code & a description for the new cycle run group

**i** Go to [Cycle Run Group Rules](#) to see to choose the Name.

Click  to leave the dialog box

 The cycle group is created



When Created, we need to inform the Requester or the people who are creating a company.