

Maintain cycles

Maintain cycles



The responsibility area is assigned to

Service center RtR

For questions related to Maintain cycles you can contact :

The content of this macro can only be viewed by users who have logged in.

Responsibility Area & Process

Assessment cycles

i An **assessment cycle** is used in SAP to assign all primary cost elements and secondary cost elements from a sending cost center to the receiver cost center. When you want to transfer costs from one cost center to another through an assessment cycle, sap use a secondary cost element and accumulates all the primary cost and secondary cost and send it to the receiving cost center.

Definition

An **assessment cycle** is used in SAP to assign all primary cost elements and secondary cost elements from a sending cost center to the receiver cost center. When you want to transfer costs from one cost center to another through an assessment cycle, sap use a **secondary cost element** and accumulates all the primary cost and secondary cost and send it to the receiving cost center.

PF1

WP1

In PF1, assessment cycles are used to:

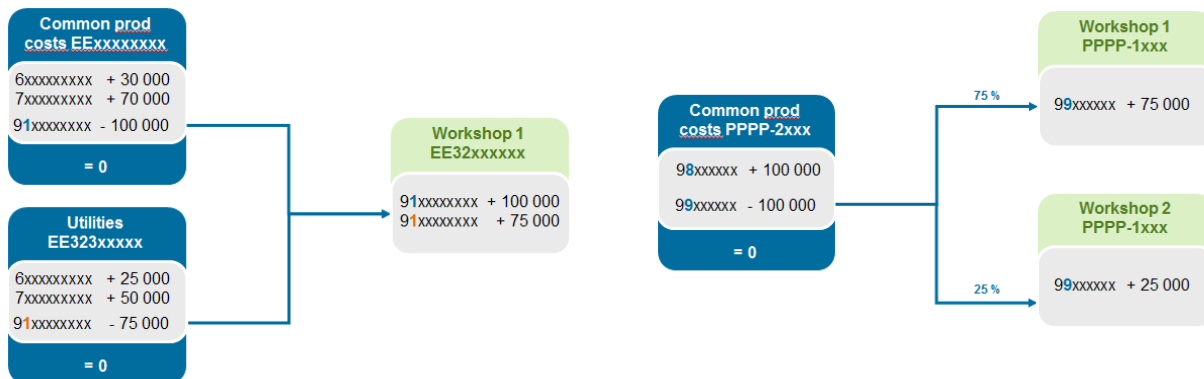
- Allocate common production & utilities cost centers to Workshops cost centers (EE32xxxxx or EE193xxxxx)

The codification of the **secondary cost element** to be used is: 91xxxxx
xxxxxx

In WP1, assessment cycles are used to:

- Allocate common production cost centers (PPPP-2xxx) to Workshops cost centers (PPPP-1xxx)

The codification of the **secondary cost element** to be used is: 99xxxxx
xxxx



Maintenance of cycles in SAP

SAP transactions

- [KSU1 - Create Actual Assessment Cycle](#)
- [KSU2 - Change Actual Assessment Cycle](#)
- [KSU3 - Display Actual Assessment Cycle](#)

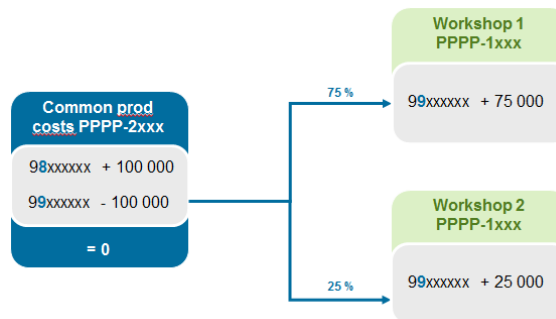
Example

- [Cycles PF1 - Example](#)

List of cycles

PF1	WP1
<ul style="list-style-type: none">• IAS19 PF1 - cycle CCCC19• Restructuring PF1 - cycle CCCC2• Restructuring PF1 - cycle CCCCRT	<ul style="list-style-type: none">• IAS19 WP1 - cycle CCCC19• Restructuring WP1 - cycle CCCC2• Restructuring WP1 - cycle CCCCRT• Cycles - codification WP1• Cycle insurance WP1

In WP1, assessment cycles are used to allocate common production cost centers (PPPP-2xxx) to Workshops cost centers (PPPP-1xxx)



COPA Assessment cycle

i COPA Assessment cycle assesses costs from a Cost Center to COPA Value Fields.

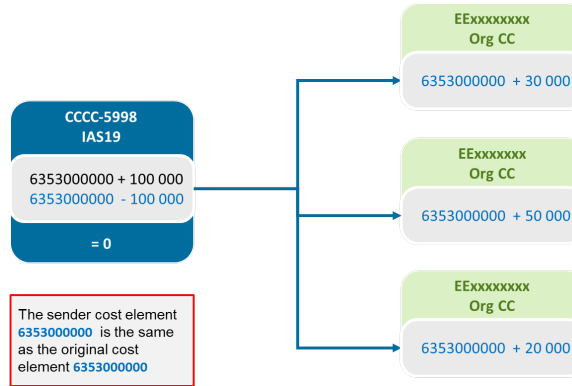
In PF2, the P&L is built in COPA, cost centers are assessed to a value field in COPA with a secondary cost element 98xxxxxxx

In WP2, the P&L is built in COPA, cost centers are assessed to a value field in COPA with a secondary cost element 994299xx

Distribution cycle

i A **distribution cycle** is used in SAP to transfer primary costs from a sender cost center to receiving controlling objects. The original cost element remains the same.

In **PF1**, distribution cycles are used for IAS 19



When you create a cycle to distribute corporate IAS19 costs in PF1, you must follow the following steps:

STEP 1

Create a distribution cycle with K SV1 - Create Actual Distribution Cycle

1. Cycle = CCCCDV
2. Start Date = 01.01.20YY to 31.12.20YY
3. Text = Distribution (IAS19)

The screenshot shows the SAP distribution cycle creation screen. Key fields are circled: 1. Cycle: 0001DV; 2. Start Date: 01.01.2024 To 31.12.2024; 3. Text: Distribution (IAS19/Insurance); 4. Status: Saved. Indicators include Iterative (checked), Cumulative (unchecked), and Cumulated Opt (unchecked). Field Groups include Consumption (unchecked), Object Currency (checked), and Transaction Curren (unchecked).

STEP 2

Only one segment needs to be created

1. Segment name = EE800IAS19
2. Segment description = IAS 19 BFC Dotation
3. Sender values =
 - Sender rule: Posted amounts
 - Share in %: 100
 - Act. vals
4. Receiver tracing factor
 - Receiver rule: Variable portions
 - Var.portion type: Actual costs
 - Scale Neg. Tracing Factors: No scaling
5. Sender cost center = EE 800IAS19
6. Sender cost elements group = ZS O-P20010
7. Receiver cost centers group = E_CCCC (= all cost centers of the company)

The screenshot shows the SAP segment configuration screen. Key fields are circled: 1. Segment Name: SM800IAS19; 2. Lock indicator; 3. Share in %: 100,00 %; 4. Var.portion type: Actual costs. Other fields include Controlling Area: CHEF, ERP SOLVAY; Cycle: 0001DV; Distribution (IAS19/Insurance); Sender rule: Posted amounts; Receiver rule: Variable portions; Scale Neg. Tracing Factors: No scaling.

Controlling Area	CHEF	ERP SOLVAY
Cycle	0001DV	Distribution (IAS19/Insurance)
Segment Name	SM800IAS19	IAS19 BFC Dotation <input type="checkbox"/> Lock indicator

Segment Header	Senders/Receivers	Sender Values	Receiver Tracing Fac... > v
----------------	--------------------------	---------------	-----------------------------

	From	To	Group
Sender			
Cost Center	SM800IAS19 (5)		
Cost Element			Z50-P20010 (6)
Cost Object			
Receiver			
Order			
Cost Center			E_0001 (7)
Cost Object			
WBS element			
Business entity			
Property			
Building			
Settlement unit			

8. Cost Element Group = IASSERV

SAVE 

Controlling Area	CHEF	ERP SOLVAY
Cycle	0001DV	Distribution (IAS19/Insurance)
Segment Name	SM800IAS19	IAS19 BFC Dotation <input type="checkbox"/> Lock indicator

< Sender Values	Receiver Tracing Factor	Receiver Weighting Factors	v
-----------------	--------------------------------	----------------------------	---

Tracing Factor	
Var. portion type	Actual costs v
Scale Neg. Tracing Factors	No scaling v

Selection Criteria			
	From	to	Group
Cost Element			IASSERV (8)

Distribution cycles are used for:

When you create a cycle to distribute corporate insurance costs in WP1, you must follow the following rules

STEP 1

Create a distribution cycle with KSV1

1. Cycle = CCCCIN
2. Start Date = 01.01.20YY to 31.12.20YY
3. Text = Corporate Insurance Cycle
4. Uncheck "Iterative"

Create Actual Distribution Cycle: Header Data			
Attach segment			
Controlling Area	2006 Rhoda Europe	Cycle	ZFR3IN (1)
Start Date	01.01.2016 To 31.12.2016 (2)	Status	new
Text	Corporate Insurance Cycle (3)		
Indicators	Field Groups		
<input type="checkbox"/> Iterative (4)	<input type="checkbox"/> Consumption		
<input type="checkbox"/> Cumulative	<input checked="" type="checkbox"/> Object Currency		
	<input type="checkbox"/> Transaction Curren		

STEP 2

Create 8 segments detailed below

Name	Text	Sort Field	S	Sender Rule	R	Rec Rule	S
98300259	D&O/EPL Liability			1 Posted amou...	1	Variable po...	1
98300252	Property			1 Posted amou...	1	Variable po...	1
98300255	Broker Fees/Comm			1 Posted amou...	1	Variable po...	1
98300256	Transport			1 Posted amou...	1	Variable port1	1
98300253	Environmental			1 Posted amou...	1	Variable po...	1
98300250	Crime			1 Posted amou...	1	Variable po...	1
98300260	Credit			1 Posted amou...	1	Variable po...	1
98300251	Liability (General and Excess)			1 Posted amou...	1	Variable po...	1

No. of Segments: 8

Detail of each segment

1	2	3	4	5	6	7
Segment name	Segment description	Var.portion type	Cost center	Cost element	Cost center	Stat. key fig.
98300259	D&O/EPL Liability	Actual Statistical Key Figures	CCCC-5998	98300259	CCCC	LIAB
98300252	Property			98300252		PROP
98300255	Broker Fees/Comm			98300255		BRKR
98300256	Transport			98300256		TPT
98300253	Environmental			98300253		ENV
98300250	Crime			98300250		CRM
98300260	Credit			98300260		CRT
98300251	Liability (General and Excess)			98300251		LIAB

Controlling Area: Z006 Rhoda Europe
 Cycle: ZFR31R Corporate Insurance Cycle
 Segment Name: 98300259 D&O/EPL Liability

1

2

Segment Header | Senders/Receivers | Sender Values | Receiver Tracing Factor

Sender values
 Sender rule: Posted amounts
 Share in %: 100.00
 Receiver tracing factor
 Receiver rule: Variable portions
 Var.portion type: Actual Statistical Key Figures
 Scale Neg. Tracing Factors: No scaling

3

Controlling Area: Z006 Rhoda Europe
 Cycle: ZFR31R Corporate Insurance Cycle
 Segment Name: 98300259 D&O/EPL Liability

Segment Header | Senders/Receivers | Sender Values | Receiver Tracing Factor

From: To: Group

Sender
 Cost Center: ZFR3-5998
 Cost Element: 98300259

Receiver
 Order:
 Cost Center:
 Cost Object:
 WBS Element:

4

5

6

Controlling Area: Z006 Rhoda Europe
 Cycle: ZFR31R Corporate Insurance Cycle
 Segment Name: 98300259 D&O/EPL Liability

Sender Values | Receiver Tracing Factor | Receiver Weighting Factors

Tracing Factor
 Var.portion type: Actual Statistical Key Figures
 Scale Neg. Tracing Factors: No scaling

Selection Criteria
 From: to: Group

Stat. key fig.: LIAB
 Activity Type:

7

When you create a cycle to distribute corporate IAS19 costs in WP1, you must follow the following steps:

STEP 1

Create a distribution cycle with K SV1 - Create Actual Distribution Cycle

- Cycle = CCCC19
- Start Date = 01.01.20YY to 31.12.20YY
- Text = IAS 19 Service Cost Allocation

SAP Create Actual Distribution Cycle: Header Data

Attach segment More

Controlling Area: Z006 Solvay Europe
 Cycle: ZFR319 Status: new
 Start Date: 01.01.2025 To: 31.12.2025
 Text: IAS 19 Service Cost Allocation

Indicators
 Iterative
 Cumulative
 Cumulated Opt

Field Groups
 Consumption
 Object Currency
 Transaction Curren

STEP 2

Only one segment needs to be created

1. Segment name = CCCC-5998

2. Segment description = IAS 19 Service Cost Alloc

3. Sender values =

- Sender rule: Posted amounts
- Share in %: 100
- Act. vals

4. Receiver tracing factor

- Receiver rule: Variable portions
- Var.portion type: Actual costs
- Scale Neg. Tracing Factors: No scaling

5. Sender cost center = CCCC-5998

6. Sender cost elements group = ZSO-P20010

7. Receiver cost centers group = CCCC (= all cost centers of the company)

STEP 3

8. Cost Element = 98320100 (=PS SALARIES)

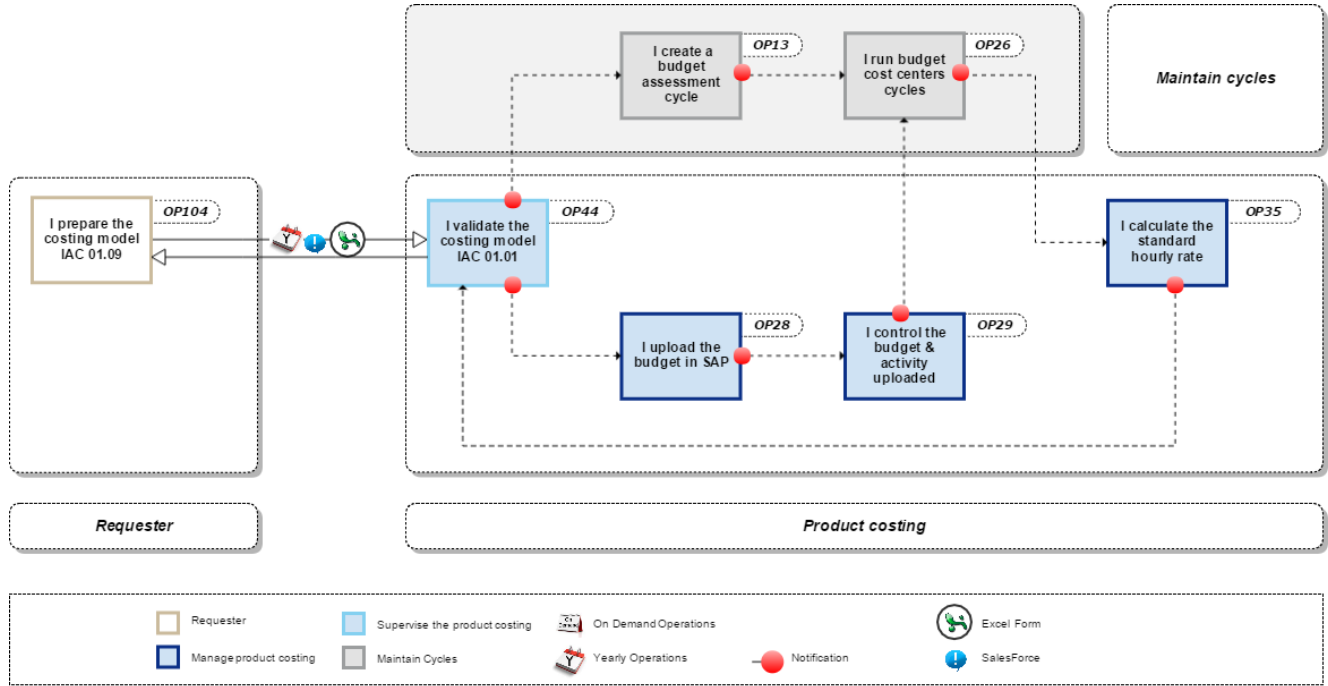
SAVE

Creation of cycles

1. Yearly process

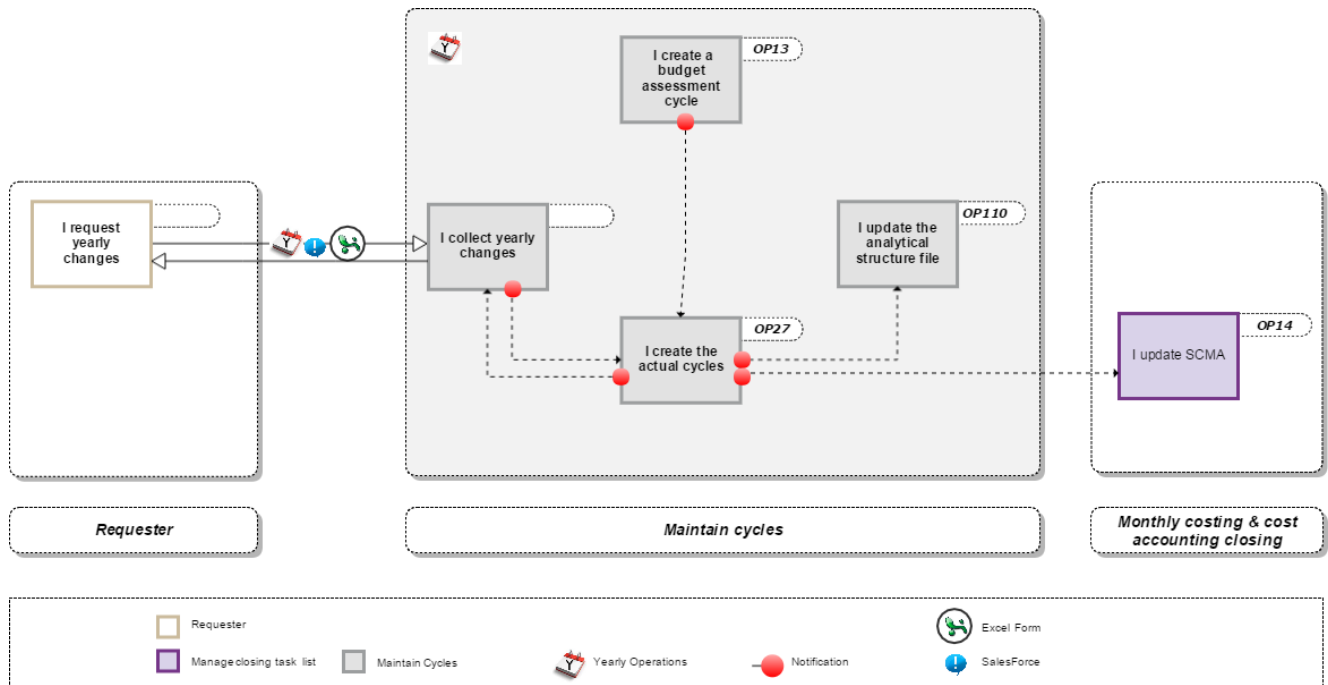
Every year all cycles must be created from 01.01.20xx to 31.12.20xx (xx : current year)

Budget - In WP1 the budget cycle must be created by Dec 15th



Actual - In PF1 and WP1 actual cycles must be created by the end of January

Usually these cycles can be created by copy of the Y-1 cycle



2. Projects

- New entities in SAP
- New requirements

Cycles are created in the frame of the project

Maintenance of cycles

Case 1 : New cost center

- When a new cost center is created, it has to be included in a cycle

Case 2 : Blocking of cost center

- When a cost center is blocked, it has to be removed from the cycle

Case 3 : New percentages/fixed amount to be allocated

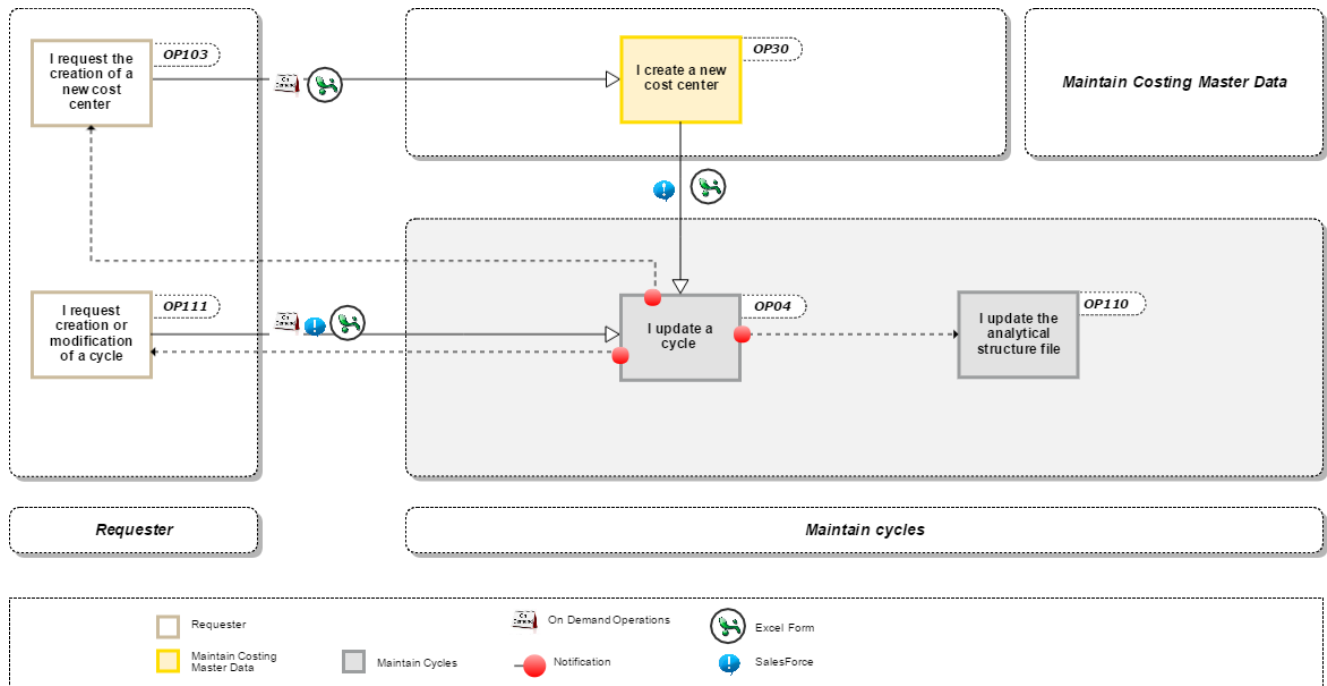
- A controller may request a change in the allocation keys or amounts.

Case 4 : Change receiver CO object

- A controller may request a change in the receiver cost object

Case 5 : New Statistical Key Figure to be used

- A controller may request a change the statistical key figure to be used in a cycle



Operating procedures

- I create a budget assessment cycle
- I create a cycle (outside the yearly maintenance process)
- I create a cycle run group
- I create the actual cycle (yearly maintenance process)
- I run budget cost centers cycles
- I update a cycle
- I update a statistical key figures (quantities)

Local procedures

Content by label

There is no content with the specified labels