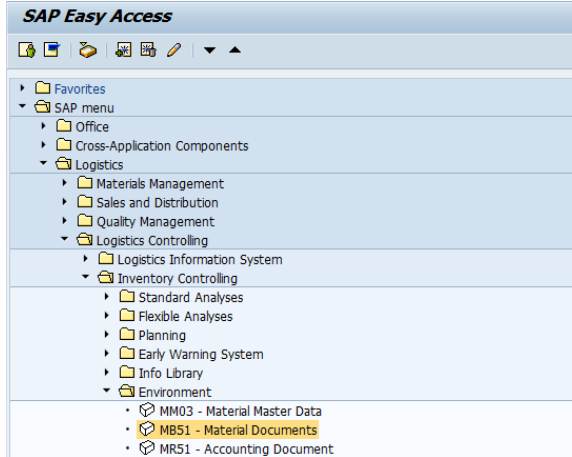
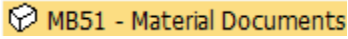


MB51 - Material Document List

STEP 1

Start the transaction using the menu path or transaction code

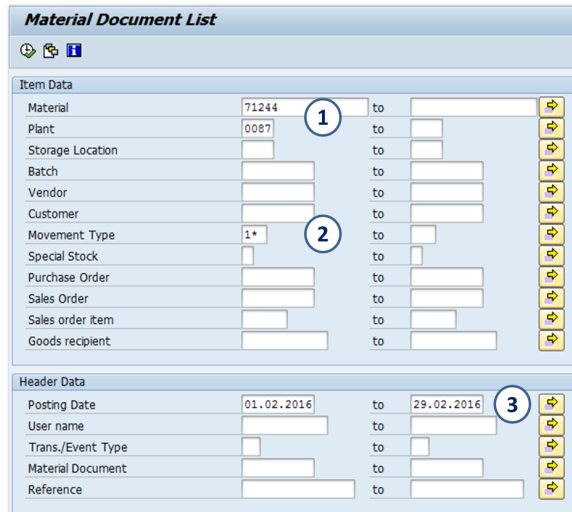


STEP 2

Enter your selection

1. Material code & plant
2. Movement types
3. Posting date

Execute



STEP 3

The report is displayed.

Material	Material Description	Plant	Posting Date	Quantity in DM	Ktn	Quantity in Bn	Amount in LC PO	Batch	Customer	Vendor
71244	ZEOSIL 165L BULK	0087	09.02.2016	7,810	TO	7,810	KG	30618260Z		
1260 101	4925427785	1	29.02.2016	8,520	TO	8,520	KG	30618260Z		
1260 101	4925377688	1	19.02.2016	21,300	TO	21,300	KG	30618260Z		
1260 101	4925344445	1	12.02.2016	10,650	TO	10,650	KG	30618260Z		
1260 101	4925423559	1	12.02.2016	10,650	TO	10,650	KG	30618260Z		
1260 101	4925334509	1	11.02.2016	10,650	TO	10,650	KG	30618260Z		
1260 101	4925334503	1	10.02.2016	14,200	TO	14,200	KG	30618260Z		
Total				88,750	KG	88,750	KG			

STEP 4

Click to change the layout.

The report can be exported in excel

Material	Material Description	Plant	SLoc	MVT	Posting Date	Quantity	Unit	Batch	Customer	Sales Ord.	PO	Order
71244	ZEOSIL 165L BULK	0087	L260	101	29.02.2016	7,810	KG	30618260Z				3557274
71244	ZEOSIL 165L BULK	0087	101	101	19.02.2016	21,300	KG	30618260Z				3551950
71244	ZEOSIL 165L BULK	0087	101	101	12.02.2016	15,620	KG	30618260Z				3545917
71244	ZEOSIL 165L BULK	0087	101	101	11.02.2016	10,650	KG	30618260Z				3543160
71244	ZEOSIL 165L BULK	0087	101	101	10.02.2016	14,200	KG	30618260Z				3544267
71244	ZEOSIL 165L BULK	0087	L320	101	23.02.2016	8,520	KG	30622260Z				3553360
71244	ZEOSIL 165L BULK	0087	L380	101	12.02.2016	10,650	KG	30611380Z				3545803

STEP 5

In order to make the analysis easier, several columns might be added, namely the "Local Curr. Amount" and the "Mov.Type".

Also a sub-total by batch can be done.

If the idea is to analyze the flow of a material along several months, it's better to make a filter on the quantity instead of the amount (because the amount is based on the price of the material for that month, which might be different from the price on the original month).

It's possible to double click on each line to see the details of the documents.

MvT	Movement Type Text	Batch	Quantity in UnE	EU	Loc. curr. amount	Posting Date	E
651	GD ret.del. returns	KB20J2902	22.660	KG	0,00	30.12.2020	3
459	TP Ret. to own bckkd		22.660	KG	22.980,87	05.01.2021	0
459	TP Ret. to own bckkd		22.660	KG	0,00	05.01.2021	0
309	TF tfr.ps.mat.to mat		22.660	KG	22.980,87	22.01.2021	2
343	TF blocked to unre.		22.660	KG	0,00	22.01.2021	2
343	TF blocked to unre.		22.660	KG	0,00	22.01.2021	2
		KB20J2902	0	KG	0,00		
101	GR stock in transt	KB20L0504	22.900	KG	0,00	09.12.2020	0
601	GD goods issue:delvly		22.900	KG	22.595,66	15.12.2020	1
651	GD ret.del. returns		22.900	KG	0,00	30.12.2020	3
459	TP Ret. to own bckkd		22.900	KG	23.224,26	05.01.2021	0
459	TP Ret. to own bckkd		22.900	KG	0,00	05.01.2021	0
309	TF tfr.ps.mat.to mat		22.900	KG	23.224,26	22.01.2021	2
343	TF blocked to unre.		22.900	KG	0,00	22.01.2021	2
343	TF blocked to unre.		22.900	KG	0,00	22.01.2021	2
		KB20L0504	0	KG	22.595,66		
101	GR stock in transt	KB20L1701	23.120	KG	0,00	22.12.2020	2
601	GD goods issue:delvly		23.120	KG	22.812,74	22.12.2020	2
		KB20L1701	0	KG	22.812,74		
101	GR stock in transt	KB21A0803	22.960	KG	0,00	11.01.2021	1
601	GD goods issue:delvly		22.960	KG	23.285,11	11.01.2021	1
		KB21A0803	0	KG	23.285,11		
101	GR stock in transt	KB21A2204	23.740	KG	0,00	27.01.2021	2
601	GD goods issue:delvly		23.740	KG	25.050,69	11.02.2021	2
		KB21A2204	0	KG	25.050,69		
101	GR stock in transt	KB21C1502	23.480	KG	0,00	25.03.2021	2
601	GD goods issue:delvly		23.480	KG	24.904,30	29.03.2021	2
		KB21C1502	0	KG	24.904,30		
			0	KG	118.648,50		