


# PF2 - Z1K\_CONS\_ESTO - Report consumption and final stock

## STEP 1

Start the report Z1K\_CONS\_ESTO in PF1

 Z1K\_CONS\_ESTO : initial screen

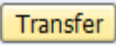
## STEP 2

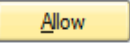
Select a variant or enter:

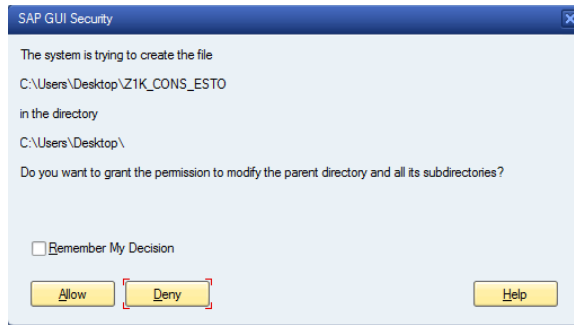
1. **Company code**
2. **Plant code**
3. **Material code** (materials linked to Material ledger)
4. **Material type** : Z700 and Z707
5. **Valuation class** : Z100, Z101, Z061 and Z053
6. **View** :
  - BEGINNING INVENTORY
  - CONSUMP
  - CONSUMP PRODUCTI ON
  - FINAL INVENTORY
  - PRODUCTI ON
  - RECEIPTS
  - RECEIPTS
  - PURCHASES
  - TRANSFER (ISSUE)
  - OTHERS RCPTS /CONSUMP
  - NOT ALLOCATED

Execute 

## STEP 3

Enter the path & the name of the file to be created and click 

Click 



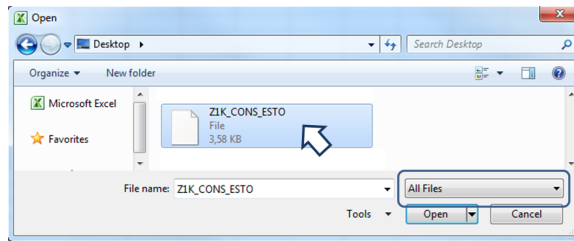
**STEP 4**

The report is displayed

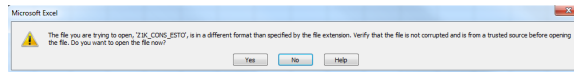
Z1K_CONS_ESTO_FINAL										
SOLVAY CHEM (FI)										
Report - Consumptions & Final Stock										
Plt	Mat-Type	Material	Description	View	G/L acc	Recipient	Quantity	Amount	Cat. Comp	
100		29112	R202 CHDRE E10T	RESINERING 10V			44,949,935	18	11,609,04	Raw materials
										Manufact. Activities
										Packaging Materials
										Depreciation
										7,844,66
										2,520,96
										5,00
										0,00
										1,303,42
100		29112	R202 CHDRE E10T	CONSERVO PRODU		30040 100	1,499,000	18	249,18	Raw materials
										Manufact. Activities
										Packaging Materials
										Depreciation
										138,74
										62,28
										0,00
										0,00
										69,14

**STEP 5**

Open excel and look for the file you saved

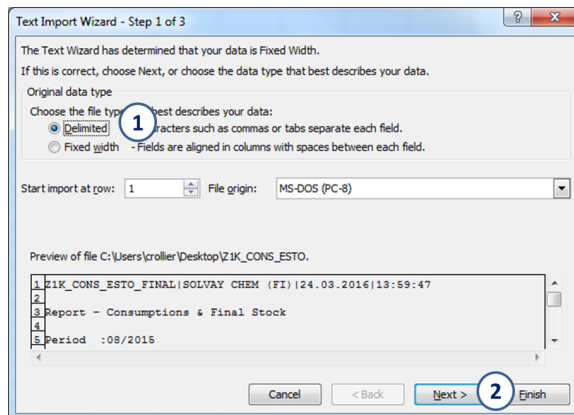


Click "yes" to open the file now

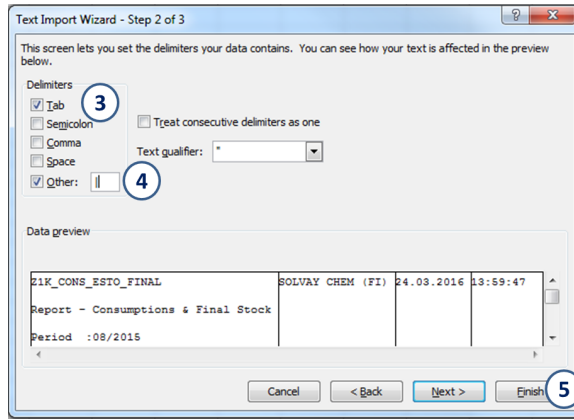


**STEP 6**

1. Choose Delimited
2. Click next to get the next screen



3. Select Tab
4. Select "Other" and enter " | "
5. Click finish to get the excel correctly align



**STEP 7**

The file is ready to use

Z1K\_CONF\SOLVAY CI24.03.2016 13:59:47

Report - Consumptions & Final Stock

Period :08/2015

CENTRO	CL VALOR	MATERIAL	DESCRIPCIÓN	CE TEX	VIEW	ACCT	RECIP	QUANTITY	UNIT	OF N VALOR	Raw mate	Manufact.	Packaging	Depreciation	
VKP	29112	H2O2 CRU F3618XXX			BEGINNIN			44.849,94	1KG	11.689,04	7.864,66	2.520,96	0	0	1.303,42
VKP	29112	H2O2 CRU F3618XXX			CONSUMP	30000	VKF	1.688,00	1KG	249,18	118,74	62,28	0	0	48,16
VKP	29112	H2O2 CRU F3618XXX			CONSUMF	30061	VKF	1.748,00	1KG	258,87	143,02	49,2	0	0	49,64
VKP	29112	H2O2 CRU F3618XXX			CONSUMS	35029	VKF	1.852,00	1KG	268,05	143,02	49,2	0	0	49,64
VKP	29112	H2O2 CRU F3618XXX			CONSUMF	35030	VKF	1.852,00	1KG	268,05	143,02	49,2	0	0	49,64
VKP	29112	H2O2 CRU F3618XXX			CONSUMF	35739	VKF	1.852,00	1KG	268,05	143,02	49,2	0	0	49,64
VKP	29112	H2O2 CRU F3618XXX			FINAL INV			19.437,26	1KG	5.824,75	3.243,34	1.435,79	0	0	1.125,62
VKP	29112	H2O2 CRU F3618XXX			PRODUCTI			1.852,00	1KG	268,05	143,02	49,2	0	0	49,64
VKP	29112	H2O2 CRU F3618XXX			RECEPTS			1.852,00	1KG	268,05	143,02	49,2	0	0	49,64