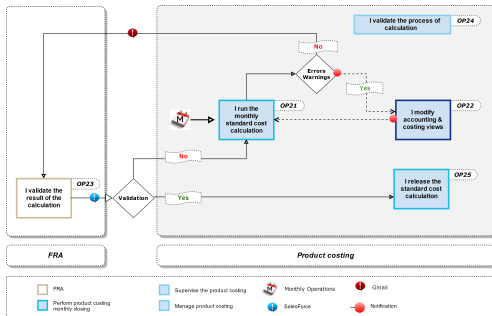


# I run the monthly standard cost calculation

Process: [Product Costing](#)

Responsibility area: [Perform product costing monthly closing](#)

A costing run must be created for all company codes with production in WP2 starting on D-7



Scope

---

Frequency

---

References

---

Attachments

---

N/A

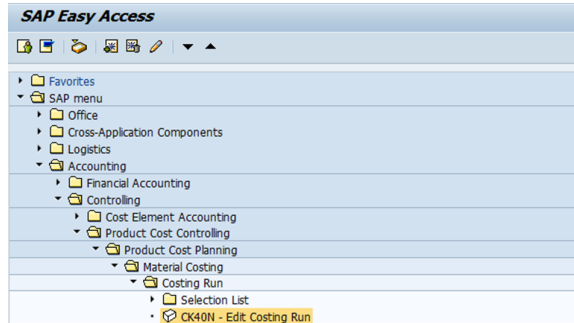
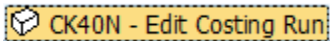
xx << I run the monthly standard cost calculation >> [OP.023](#)

## Guideline

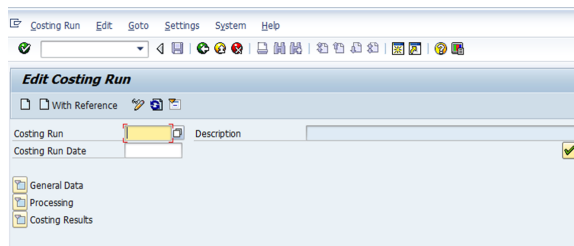
### STEP 1

Start the transaction using the menu path or transaction code **CK40N**

Double-click



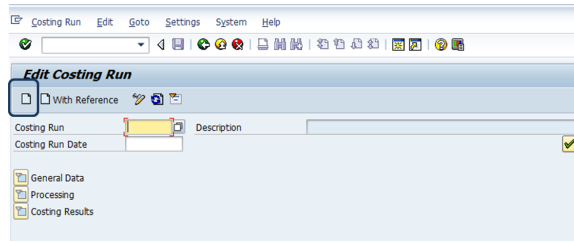
Edit Costing Run : Initial Screen



### STEP 2

Create the costing run by clicking on

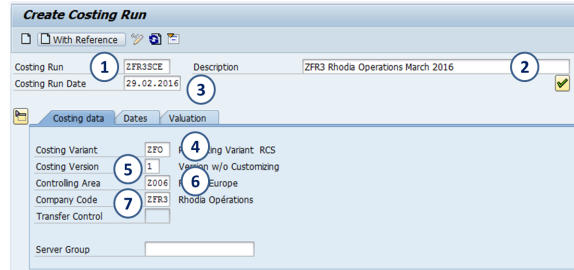
Unknown Attachment



**STEP 3**

Enter :

1. **Costing run code :**  
CCCCSCE
  - CCCC = Company code
  - SCE - Standard cost estimate
2. **Description :** CCCC Name company Month Year
3. **Costing Run Date :** Last day of the month preceding the cycle
4. **Costing variant :** ZFO (ZEP in Korea, Z25 in Brazil)
5. **Costing version :** 1
6. **Controlling area**
7. **Company code**



The monthly calculation of the cost estimate starts with four steps. Run every month since D-6 until D-2 or D-1 depends of each company. In order to continue for the other steps we need the approval from all controllers.

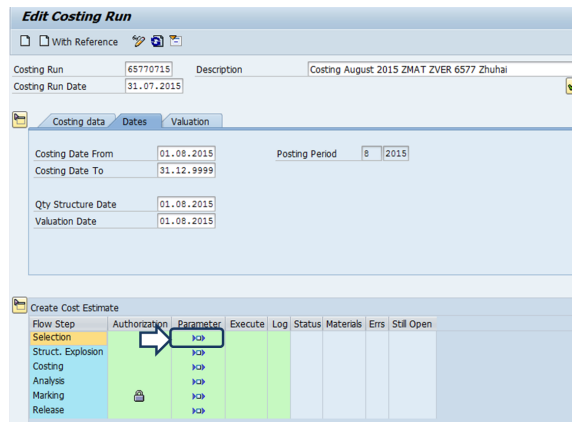
**STEP 1**

The date of the first day of the cycle appears. To avoid any problems, calculation must remain until 31.12.9999.

The cycle starts with the selection of the materials that are costed. Click





on in the column « Parameter » / line « Selection »

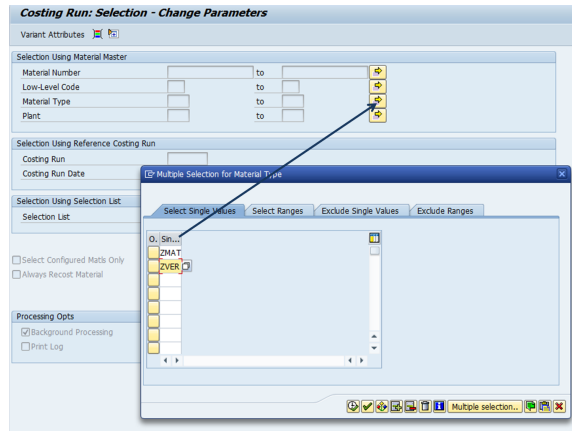


**STEP 2**

A new screen appears


1. Click on  beside Material Type
2. Enter the Material type :
  - **ZMAT** : Finished product & RM & SF
  - **ZVER** : Packaging

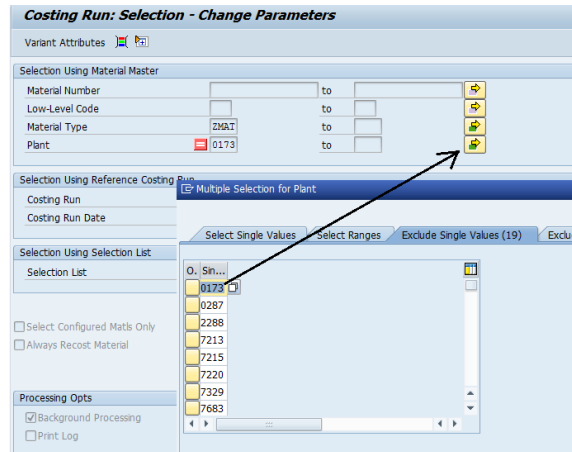
and execute 



### STEP 3


In the same screen update the plants:

1. Click on  beside Plant
2. In tab Exclude single values
3. Add the plants from **SQ00** in tab excludes

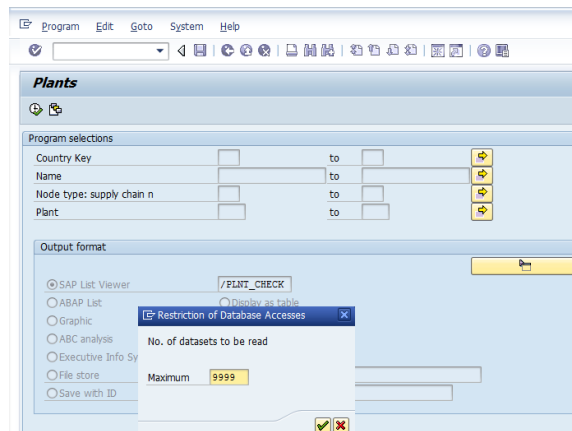


### STEP 4

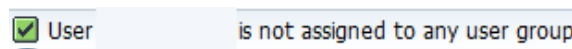
To remove Trading Plants (Négoce /NDIR) from WP1 Costing Run the following selections must be performed:

1. Go to **SQ00**, user group "**Costing**", choose the Query "**PLANTS**" and execute 
2. In case you get an error message saying that your User is not assigned to any User Group, go to Environment -> Work areas and choose Standard area. After go to Edit -> Other User Group -> Costing.
3. Select Layout **/PLNT\_CHECK** and confirm for your scope if Plants listed are excluded from **CK40N** parameters.

1



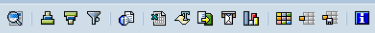
2



**Conclusion** : The Plants should be included/added to the already existing exclude list in CK40N (do not delete the Plants already in the List).

3

**Plants**



**Plants**

Plnt	Name 1	Rg	Region (State, Provi	Cty	Nty	House number and street
7379	ZFR3 / Négoce BE			BE		
7330	ZFR3 / Négoce DE			DE	DC	
8107	ZFR3 / Négoce ES			ES		
7329	ZFR3 / Négoce FR	93	SEINE-ST-DENIS	FR	DC	
7360	ZFR3 / Négoce GB			GB	DC	
7390	ZFR3 / Négoce Hors UE			Q1	DC	
7353	ZFR3 / Négoce IT	MI	MILANO	IT	DC	VIA MILANO 78/80
7331	ZFR3 / Négoce NL			NL	DC	
7380	ZFR3 / Négoce UE			EU	DC	


STEP 5

Check Background Processing


and save

? Unknown Attachment

The message "Values of variant xxxx" appears

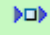
Go back by clicking 

**STEP 6**

1. Click on  in the column « Execute » / line « Selection »
2. Check Start Immediately
3. Click on

? Unknown Attachment

**STEP 1**

The cycle continues by the determination of quantities. Click on the icon  of column **Parameter** on the line **Struct explosion**.

Flow Step	Authorization	Parameter	Execute	Log	Status	Materials	Er.	Still Open
Selection								
Struct. Explosion						381	0	
Costing								
Analysis								
Marking								
Release								

**STEP 2**

A new screen appears

- Uncheck **Background processing** and save


? Unknown Attachment

A message appears : "values of variant xxxx saved"

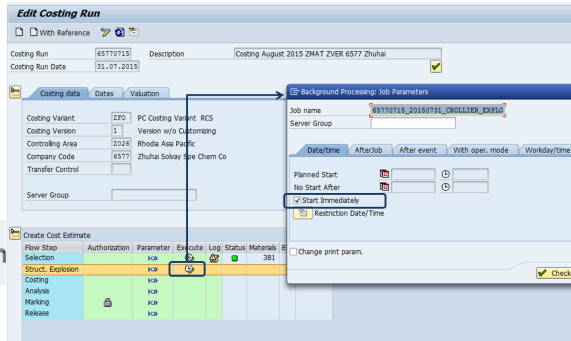
- Go back by clicking

? Unknown Attachment

STEP 3

- Click on  in the column **Execute** / line **Struct explosion**
- Check **Start Immediately**
- Click on

? Unknown Attachment



STEP 4

Click on

? Unknown Attachment

until the job is finished: the icon

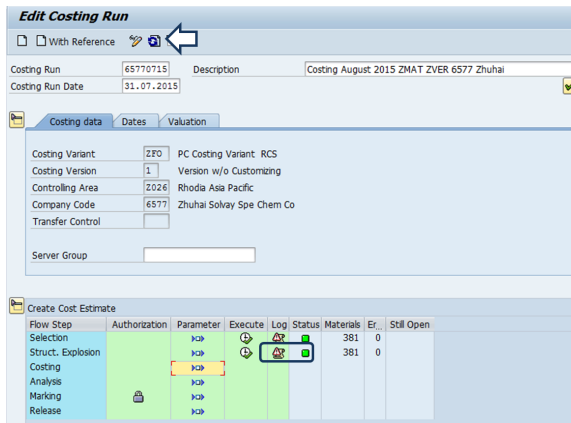
? Unknown Attachment

appears in the column log with a

status 

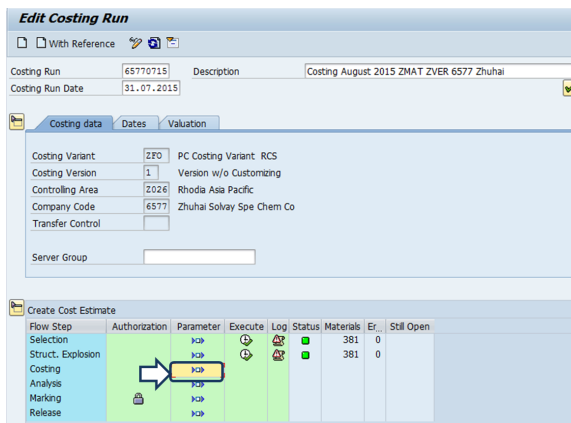
? Unknown Attachment

or 



STEP 1

The cycle continues by the costing. Click on the icon of column **Parameter** on the line **Costing**.



STEP 2

A new screen appears

- Uncheck **Background processing** and save

? Unknown Attachment

A message appears : "values of variant xxxx saved"

- Go back by clicking

? Unknown Attachment

### Costing Run: Cost Estimate - Change Parameters

Variant Attributes

Cost Ests with Errors Only  
 Log by Costing Level

**Costing Levels**

Parallel Processing  
 Parallel Processing  
 Maximum No. of Servers/Modes

Processing Opts  
 Background Processing   
 Print Log

**STEP 3**

1. Click on in the column **Execute** / line **Costing**
2. Check **Start Immediately**
3. Click on

? Unknown Attachment

### Edit Costing Run

With Reference

Costing Run: 65770715 Description: Costing August 2015 ZMAT ZVER 6577 Zhuhai  
 Costing Run Date: 31.07.2015

Costing data | Dates | Valuation

Costing Variant	ZFO	PC Costing Variant	RCS
Costing Version	1	Version w/o Customizing	
Controlling Area	2026	Rhodia Asia Pacific	
Company Code	6577	Zhuhai Solvay Sp	Chem Co
Transfer Control			
Server Group			

Background Processing: Job Parameters  
 Job name: 65770715\_20180731\_CROTLIER\_COST1  
 Server Group:

Planned Start:   
 No Start After:   
 Start Immediately  
 Restriction Date/Time:

Change print param.

Check

Flow Step	Authorization	Parameter	Execute	Log	Status	Materials	Er	Still Open
Selection	>>>					381	0	
Struct. Explosion	>>>					381	0	
Costing	>>>					381	0	0
Analysis	>>>							
Marking	>>>							
Release	>>>							

**STEP 4**

1. Click on until the job is finished: the icon appears in the column log with a status

? Unknown Attachment

or

### Edit Costing Run

With Reference

Costing Run: 65770715 Description: Costing August 2015 ZMAT ZVER 6577 Zhuhai  
 Costing Run Date: 31.07.2015

Costing data | Dates | Valuation

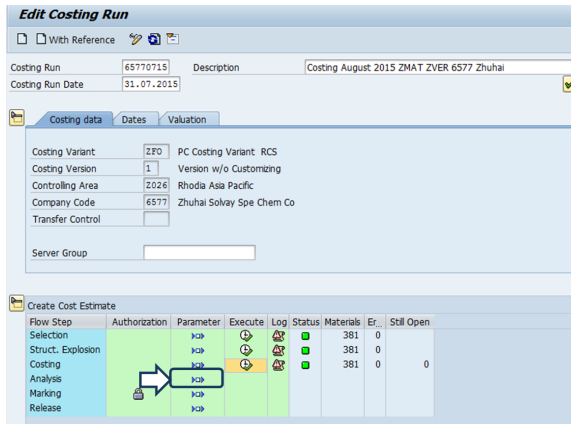
Costing Variant	ZFO	PC Costing Variant	RCS
Costing Version	1	Version w/o Customizing	
Controlling Area	2026	Rhodia Asia Pacific	
Company Code	6577	Zhuhai Solvay Spe Chem Co	
Transfer Control			
Server Group			

Flow Step	Authorization	Parameter	Execute	Log	Status	Materials	Er	Still Open
Selection	>>>					381	0	
Struct. Explosion	>>>					381	0	
Costing	>>>					381	0	0
Analysis	>>>							
Marking	>>>							
Release	>>>							

**STEP 1**

The cycle continues with the analysis of the calculation:

- Click on the icon of column **Parameter** / line **Analysis**

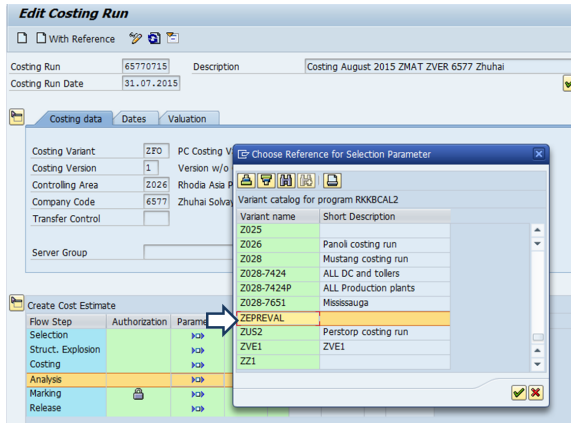


**STEP 2**

A new screen appears

Select your variant according to your company.

- Select the variant "ZEPREV AL" for example.

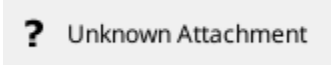


**STEP 3**

A new screen appears

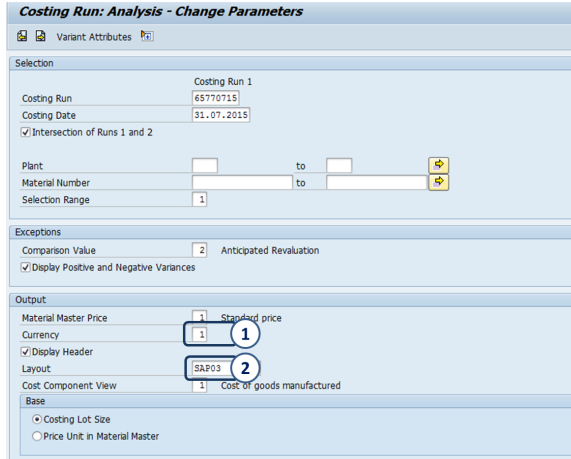
1. Enter the currency = 1 (currency of the company)
2. Layout: SAP03 (It has to be created previously by the user)

Save




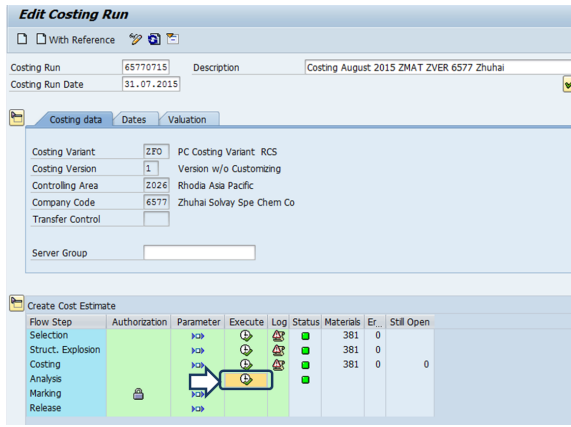
A message appears : "values of variant xxxx saved"

- Go back by clicking



**STEP 4**

Click on  in the column **Execute** / line **Analysis**



**STEP 5**

The report is displayed with the list of material codes & plants

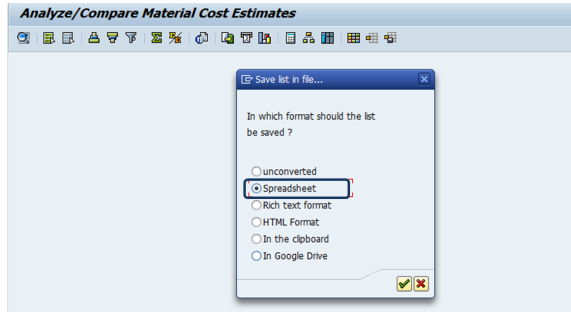
- $A = F / D =$  Variation in %
- $B = C \times F =$  Anticipated revaluation
- $C =$  Total stock (quantity)
- $D =$  Standard costing M
- $E =$  Standard costing M+1
- $F = E - D =$  Costing variation

Material	Material Description	Plant	Lot Size	Price Unit	Unit	%Var.	co.	P. Anticip.	Total Stock	Val. MatHs	Costing Re	Var. costn.
18630	HYDROCHLORIC ACID 36% OHL BULK	8091	1,000	1,000	TD				6,342	1,452,999.94	1,453,000.	6.79
30695	RHODAFAC RE-610 PUT PLASTIC 200 KG	8091	1,000	1,000	KG				0	19,246.65	18,440.15	-4.05
30659	RHODAFAC RA-600 PLASTIC DRUM 200 KG	8091	1,000	1,000	KG				0	10,200.00	10,200.00	0.00
31139	RHODASURF BC-610 METAL DRM 193KG	8091	1,000	1,000	KG				0	10,200.00	10,200.00	0.00
32267	RHODASURF CET79 180 KG DRUM	8091	1,000	1,000	KG				1,440	18,380.48	18,380.48	0.00
38990	GEROPON HV 15 METAL DRUM 200 KG	8091	1,000	1,000	KG				0	13,689.61	13,689.61	0.00
41289	ABEX 2515 BULK	8091	26,454	1,000	LB				0	106,289.51	106,289.51	0.00
41295	ABEX 2535 BULK	8091	26,454	1,000	LB				0	92,844.28	92,844.22	0.06
53303	RHODAPEX CD 436 BULK	8091	15,432	1,000	LB				12,874.864	62,697.28	62,697.26	0.02
57254	LAURIC CONDENSATE BLK	8091	1,000	1,000	LB				73,036.193	10,092.96	10,092.96	0.00
58306	SODIUM METABISULFITE 25/50KG BG	8091	1,000	1,000	KG				1,813	5,962.91	5,962.91	0.00
58309	SULFAMIC ACID 25KG BG	8091	1,000	1,000	KG				2,959	5,153.27	5,153.27	0.00
61084	PROPYLENE OXIDE BU	8091	1,000	1,000	KG				294,600	34,525.73	34,525.73	0.00
61479	2-ETHYL HEXANOL 171KG DR	8091	1,000	1,000	KG				1,020	10,576.61	10,576.61	0.00

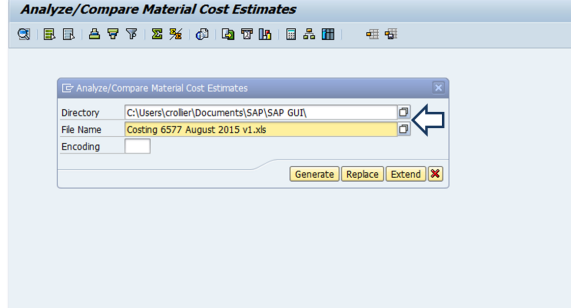
The report must be saved in excel by clicking on

**STEP 6**

Check **Spreadsheet**



Enter the folder & the file name and



# Workflow history

This view shows the 5 most recent entries. The complete workflow log is available from the 'Document Activity' menu item.




From Oct 09, 2017 to	Actor	Type	Activity	Version
----------------------	-------	------	----------	---------

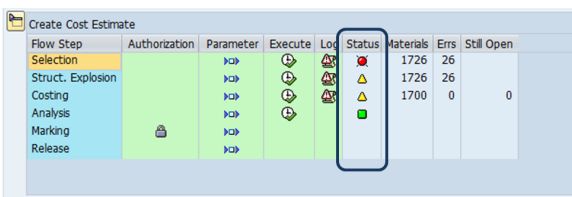
Sept 08, 2025

Published	PEREIRA DINIZ, Sandra and C HANSRI, Surachet	Edit	multiple updates from PEREIRA DINIZ, Sandra and CHANSRI, Surachet
Jul 06, 2016			
	ROLLIER, Charlotte	State	changed state to <b>Published</b> at 4:11 pm v24
To be approved	ROLLIER, Charlotte	State	gave <i>Approvers</i> approval at 4:11 pm
		State	changed expiry date to '11 Jul, 2016 04:11 pm' at 4:11 pm
		State	changed state to <b>To be approved</b> at 4:11 pm v24
For Review	ROLLIER, Charlotte	State	gave <i>Reviewers</i> approval at 4:11 pm
		State	changed expiry date to '11 Jul, 2016 04:11 pm' at 4:11 pm
		State	changed state to <b>For Review</b> at 4:11 pm v24
Draft	ROLLIER, Charlotte	State	changed state to <b>Draft</b> at 4:11 pm v24

**STEP 1**

WP1 + PF1


When there are error  or warning  messages, you must click on  to analyse and clear them

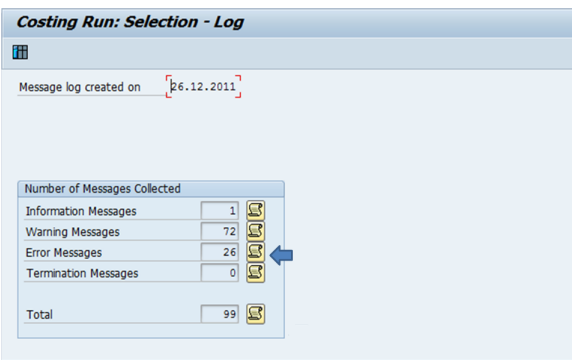


Flow Step	Authorization	Parameter	Execute	Lot	Status	Materials	Errs	Still Open
Selection						1726	26	
Struct. Explosion						1726	26	
Costing						1700	0	0
Analysis								
Marking								
Release								

**STEP 2**

WP1 + PF1

Click on  to have the list of messages



Costing Run: Selection - Log


Message log created on [E6.12.2011]


Number of Messages Collected	
Information Messages	1
Warning Messages	72
Error Messages	26
Termination Messages	0
Total	99

**STEP 3**

WP1 + PF1

1 - Type of message

 **E** Error messages, must be cleared

 **W** Warning messages, must be analysed

and cleared as much as possible



Information on messages

- 2 - Message code
- 3 - Plant code
- 4 - Material code
- 5 - Message description

**Costing Run: Selection - Log**

Log created on 26.12.2011

Excep...	M...	M...	Plant	Material	Σ	A...	Message Text	
○○○	W	128	7811	32787	1	CK	Material 32787 in plant 7811 has no accounting data	
○○○	W			77069	1	CK	Material 77069 in plant 7811 has no accounting data	
○○○	W			115117	1	CK	Material 115117 in plant 7811 has no accounting data	
○○○	W		7818	49739	1	CK	Material 49739 in plant 7818 has no accounting data	
○○○	W		7819	110142	1	CK	Material 110142 in plant 7819 has no accounting data	
○○○	I	172	7787	1615996	1	CK	Material 1615996 in plant 7787: No cost est. exists -> ra...	
○○○	E	310	7714	68858	1	CK	Material 68858 is marked for deletion	
○○○	E			19398	1	CK	Material 19398 is marked for deletion	
○○○	E			40928	1	CK	Material 40928 is marked for deletion	
○○○	E			50775	1	CK	Material 50775 is marked for deletion	
○○○	E			66785	1	CK	Material 66785 is marked for deletion	
○○○	E			101132	1	CK	Material 101132 is marked for deletion	
○○○	E			101628	1	CK	Material 101628 is marked for deletion	
○○○	E			7779	66785	1	CK	Material 66785 is marked for deletion

**STEP 4**

**WP1 + PF1**

You can double-click on a message to have a more detailed description of the issue

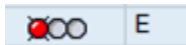
Performance Assistant

**Material 68858 is marked for deletion**

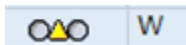
Message no. CK310

**Diagnosis**

Material 68858 was flagged for deletion internally. To delete this deletion flag, you have to change the indicator in the material master record.  
[Change material master record](#)



- CK060 - Object was not costed
- CK249 - Cost component split for material not saved
- CK310 - Material is marked for deletion
- CK380 - No valid source of supply could be found
- CK468 - No price could be determined for subcontracting
- CK023 - No control record for Activity type CHEF/X332900700/ZZANO2 in version 000 / 2017 activity planning/qty planning
- CK354 - Material XXXX in plant YYY has material status Z4 : Material deleted
- CK430 - Missing formula in work center xxxxx
- CK862 - Material XXX in plant XXX does not contain any segment for in-house production



- CK053 - Deletion indicator set in material - plant
- CK054 - Deletion indicator set in material - valuation area
- CK080 - Material plant : BOM not active

CK082 - Material plant: no suitable BOM found

CK128 - Material in plant has no accounting data.

CK382 - Material does not exist in withdrawal plant


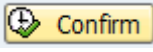
CK858 - No suitable or valid production version

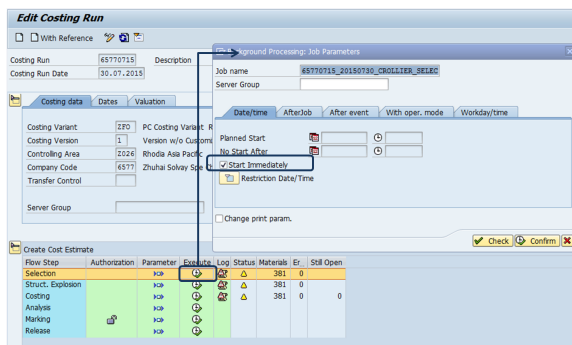
Inform the FRA that the cost estimate has been calculated

I receive an email from the FRA that some changes have been performed and the cost estimate must be recalculated


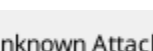
If corrective actions have been taken, the costing run must be re executed

#### STEP 1

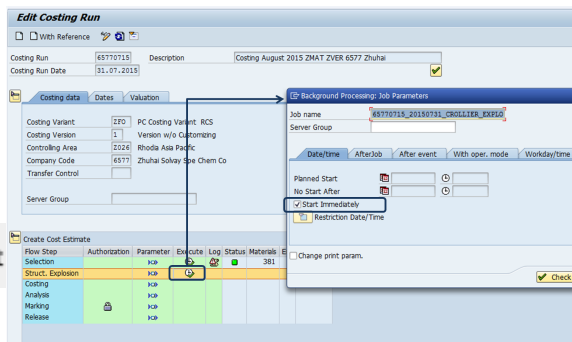
1. Click on  in the column « Execute » / line « Selection »
2. Check Start Immediately
3. Click on 




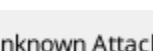
#### STEP 2

1. Click on  in the column « Execute » / line « Struct explosion »
2. Check Start Immediately
3. Click on 

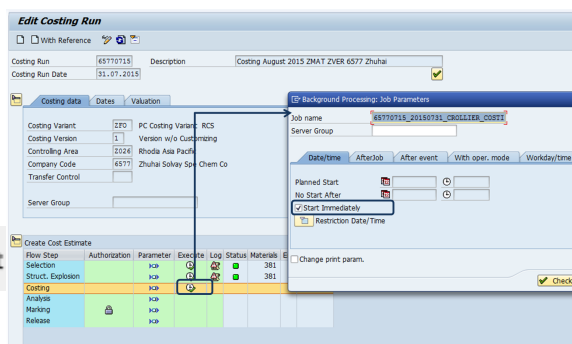
? Unknown Attachment




#### STEP 3

1. Click on  in the column « Execute » / line « Costing »
2. Check Start Immediately
3. Click on 

? Unknown Attachment



#### STEP 4

Click on  in the column « Execute » / line « Analysis »

**Edit Costing Run**

With Reference

Costing Run: 65770715 | Description: Costing August 2015 ZMAT ZVER 6577 Zhuhai  
 Costing Run Date: 31.07.2015

Costing data | Dates | Valuation

Costing Variant: ZFO | PC Costing Variant: RCS  
 Costing Version: 1 | Version w/o Customizing  
 Controlling Area: 2026 | Rhodia Asia Pacific  
 Company Code: 6577 | Zhuhai Solvay Spe Chem Co  
 Transfer Control:   
 Server Group:

Create Cost Estimate

Flow Step	Authorization	Parameter	Execute	Log	Status	Materials	Er.	Still Open
Selection		KCR	⬇	⬇	⬆	381	0	
Struct. Explosion		KCR	⬇	⬇	⬆	381	0	
Costing		KCR	⬇	⬇	⬆	381	0	0
Analysis								
Marking								
Release		KCR	⬇	⬇	⬆			

Inform the FRA that the cost estimate has been calculated