

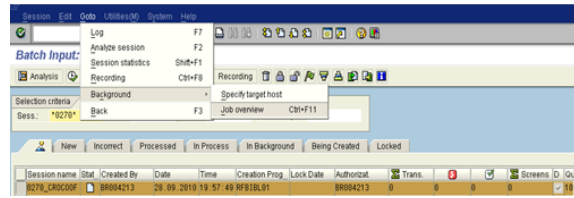
# SM37 - Simple Job Selection

**STEP 1**

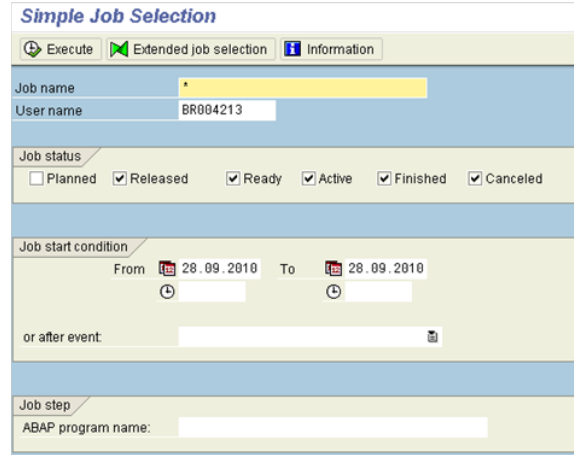
Use transaction code:

**i** SM37 - Simple Job Selection: Initial Screen

You can check how your session is doing by going into the header. "Goto->Background->Job overview"



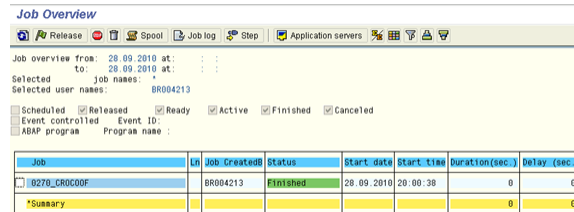
And you will be able to display the transaction SM37.




**STEP 2**

Follow your batch input session

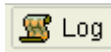
In this screen you can follow how your batch input session is going and check the status:



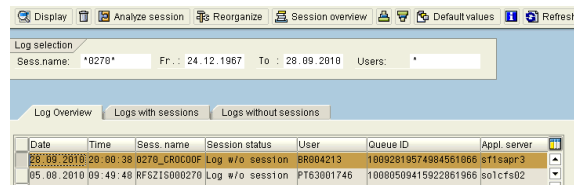
Click on "refresh"  and you can see when it's finished.

When it says "Finished" the batch input has been run. To be sure there aren't any errors, go to back to transaction [SM35](#) and find your session.

If you tried to search your session and even though are not able, click on "Log" button.



You will retrieve another screen with batch sessions. If your batch session is in "Log", this means that the batch was processed, with errors or not.



For a further analysis you could double click on the batch session, retrieving a screen where you will be able to see better what the batch performed.

Here you can also find the documents generated by the batch session, only when the session generates a document number:

Log attributes		Transact	Index	Modul	Scr	In	T	M	M
Name	B278_CROCOOF	Queue ID	18892819574984581886	User	BR884213				
Created On	28.09.2018	Temp ID	80CL6498456186634368	<input type="checkbox"/> Details					
Time	Message								
20:00:38	Session: 0278_CROCOOF is being processed by user BR884213 in mode	0				0	S	00	300
20:00:38	Batch input session deleted	1				0	A	00	301
20:00:38	Processing statistics	0				0	S	00	370
20:00:38	0 transactions read	0				0	S	00	363
20:00:38	0 transactions processed	0				0	S	00	364
20:00:38	0 transactions with errors	0				0	S	00	365
20:00:38	0 transactions deleted	0				0	S	00	366
20:00:38	Batch input processing ended	0				0	S	00	382