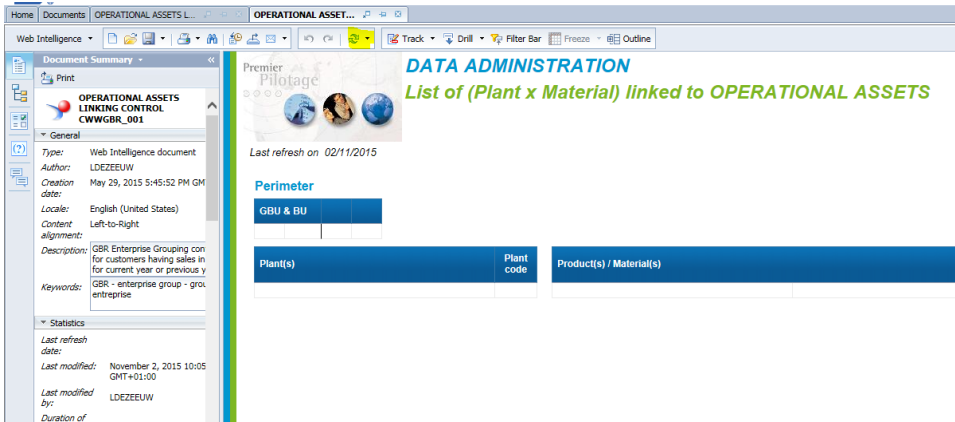


In BI4 how to find the Enterprise and ZSECT code

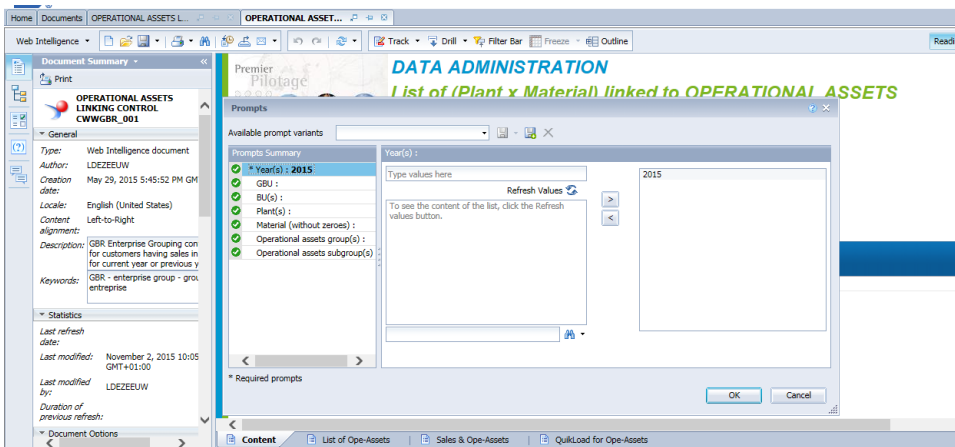
- Login to BI launch pad
- Go to the report location 1-PPS/PPE Corporate Reports /10-Data administration/ Operational Assets Linking Control CWWGBR_001

blocked URL

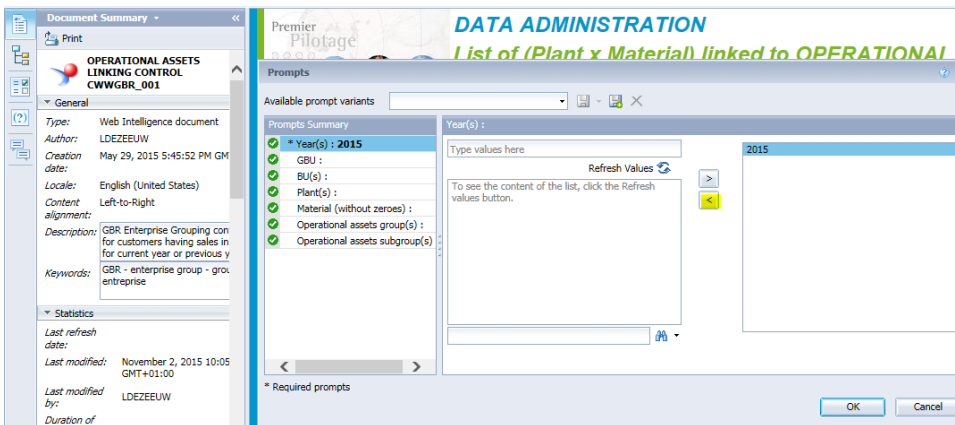
- Click on refresh button



- Once refresh is completed, a pop window appears, where the prompt values has to be provided.



- Remove the default value of Year 2015 by using the >> button



- And add the current year and choose the required GBU and click on OK, after which it refresh the values and displays the result.

