

# MECANO user manual

The MECANO user manual supports you in your own KPI creation.

In this document you will find a general presentation of the QlikView MECANO dashboard (this page) and a way to make your own KPI for each KPI.

## MECANO QlikView general layout description

- MECANO QlikView general layout description
  - 1. Main selection bar
    - a) Authentication
    - b) Definition
    - c) Summary board
    - d) Strategic KPIs
    - e) Efficiency KPIs
    - f) Effectiveness KPIs
    - g) "My dashboard" board
  - 2. KPI by family selection
  - 3. KPI options selection
    - a) Current selections – global
    - b) Global dimension
    - c) Work order dimension
    - d) Operations dimension
    - e) Language selection
  - 4. Graphical display area of the KPI
  - 5. Bookmark and navigation bar for MECANO
  - 6. Create your dashboard

As it is shown in the picture below, MECANO has 5 principal display areas:



Figure 1: MECANO principal areas

1: Main selection bar

2: KPIs by family selection

3: KPI options selection: this area permits you to select all the options you need to have a relevant KPI for you plant / sector / workshop, etc... The "current selections – global" is a reminder of all selection you made. You can delete each selection by clicking the eraser, or change it by clicking on the arrow on the right of the eraser (every selection works on the same manner as explained).

4: Graphical display area of the KPIs

5: Bookmark and navigation bar for MECANO

1. Main selection bar



This board displays the strategic KPIs, the selection areas "2" and "3" allow you to select different KPIs, an example will be shown in the following pages.

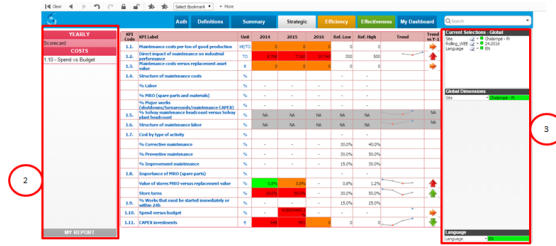


Figure 5 : strategic KPIs display

### e) Efficiency KPIs

This board displays the efficiency KPIs, the selection areas "2" and "3" allow you to select different KPIs, an example will be shown in the following pages.



Figure 6 : efficiency KPIs

### f) Effectiveness KPIs

This board displays the effectiveness KPIs, the selection areas "2" and "3" allow you to select different KPIs, an example will be shown in the following pages.

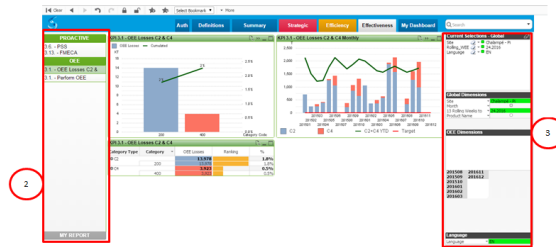


Figure 7 : effectiveness KPIs

### g) "My dashboard" board

This board allows you to create your own dashboard by selecting different KPIs from the sections shown before (strategic, efficiency, effectiveness). The way to do your own dashboard will be shown in the following pages.

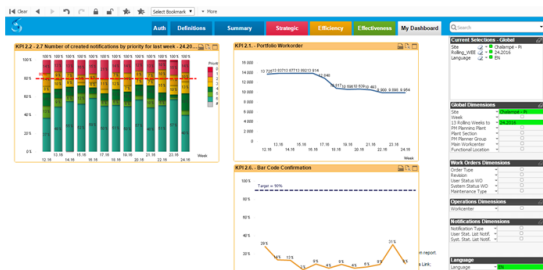


Figure 8 : "my dashboard" board

## 2. KPI by family selection

This area allows you to select one of the 40 MECANO KPI classified by family (from left to right: strategic, efficiency, effectiveness). In each family there is a sub-family, as an example if you choose the efficiency KPI's family (yellow ones) you can see that it refers to the WOM process and that there are all the main steps of the process. You can then have a scope view of some parts of the process thanks to the MECANO KPIs.

YEARLY	GATEKEEPING	PROACTIVE
Scorecard	2.2 - Notifications by Priority 2.7 - Emergency Work	3.6 - PSS 3.13 - FMECA
<b>COSTS</b>	2.8 - Notification without Assigned Order	<b>OEE</b>
1.10 - Spend vs Budget	<b>PLANNING</b>	3.1 - OEE Losses C2 & 3.1. - Perform OEE
	2.1 Workorder Portfolio 2.9 Workorder Preparation	
	<b>2.3 Planned Work (Backlog)</b>	
	2.12 Delayed Notif. by Type 2.13 Rate of Delay	
	<b>SCHEDULING</b>	
	2.4 Scheduling Adherence 2.10 Break in works 2.14 Available Ressources Scheduled	
	2.15 Daily respect 2.16 Deplanification causes	
	<b>EXECUTION</b>	
	2.5 Wrench time 2.6 Respect of bar code confirmation 2.11 Respect of Notification date 2.17 Number of works after inspection	
MY REPORT	MY REPORT	MY REPORT

Figure 9 : KPI selection (from left to right : strategic, efficiency, effectiveness)

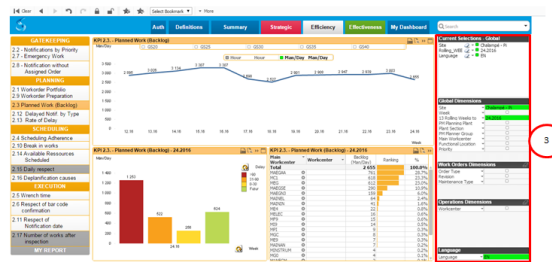


Figure 10 : example of KPI selection (2.3 : Planned Work (backlog))

If you click on a KPI (example 2.3: Planned Work (Backlog)), the graphics of the KPI will be display on your screen as it shown in the next page screenshot (Figure 10).

## 3. KPI options selection

This area permits you to select all the options you need to have a relevant KPI for you plant / sector / workshop, etc...

### a) Current selections – global

The “current selections – global” is a reminder of all selection you made. You can delete each selection by clicking the eraser, or change it by clicking on the arrow on the right of the eraser (every selection works on the same manner as explained).

### b) Global dimension

This area permits you to select the options you want on a global dimension view.

### c) Work order dimension

This area permits you to select the options you want on a work order dimension view.

### d) Operations dimension

This area permits you to select the options you want on a operation dimension view.

### e) Language selection

This area permits you to select the language for the whole software.

## 4. Graphical display area of the KPI

The screenshot displays a software interface for KPI options selection, organized into several sections:

- Current Selections - Global:** A list of three items: Site (Chalampé - Pi), Rolling\_WEE (24.2016), and Language (EN). Each item has a small eraser icon and a dropdown arrow to its left.
- Global Dimensions:** A list of dimensions with dropdown menus and checkboxes:
  - Site: Chalampé - Pi (checked)
  - Week: [empty]
  - 13 Rolling Weeks to: 24.2016 (checked)
  - PM Planning Plant: [empty]
  - Plant Section: [empty]
  - PM Planner Group: [empty]
  - Main Workcenter: [empty]
  - Functional Location: [empty]
  - Priority: [empty]
- Work Orders Dimensions:** A list of dimensions with dropdown menus and checkboxes:
  - Order Type: [empty]
  - Revision: [empty]
  - Maintenance Type: [empty]
- Operations Dimensions:** A list of dimensions with dropdown menus and checkboxes:
  - Workcenter: [empty]
- Language:** A dropdown menu showing EN (checked).

Figure 11 : KPI options selection

Once you have make your options selection of the KPI you have choosen it will be display as shown in the following figure (figure 17).

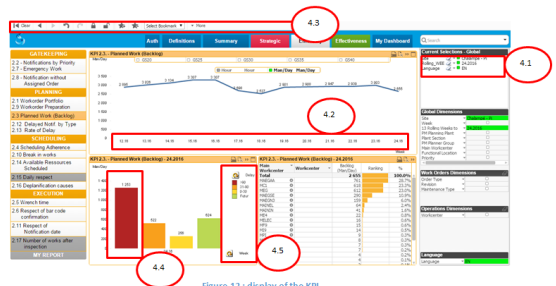


Figure 12 : display of the KPI

4.1: the number of data range selected appears in the “current selection – global”

4.2: the selection is displayed

4.3: You can go back by clicking the eraser as explained before or using the navigation board

4.4: you can select a data by clicking on it, it will be display and you can erase selection as before

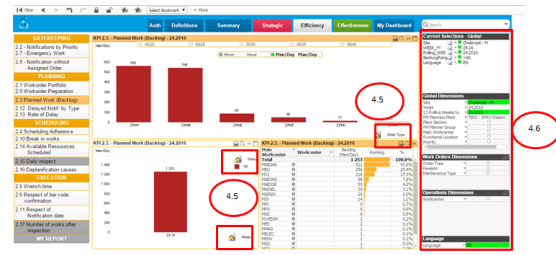


Figure 13 : Selected data display

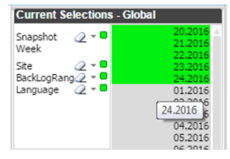


Figure 14 : week selection

4.5: you can click on the scale to see data (week, order type priority, maintenance type); you can also change the period and the delay.

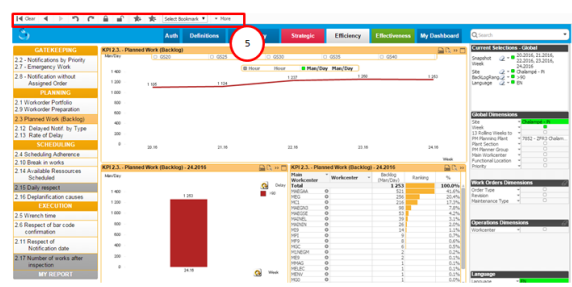


Figure 15 : display of the selections of the figure 19

4.6: if you want to change your selection you can use the KPI options selection tool (example: week selection figure 19 + 20).

If this selection is relevant for you KPI you can save it in a bookmark thanks to the bookmark and navigation bar for MECANO "5".

## 5. Bookmark and navigation bar for MECANO



Figure 16: bookmark and navigation bar for MECANO



Figure 17: cleared selections

5.1: the "clear" button will clear all the selections you've made in the KPI options selection area.



Figure 18: locked options selection



Figure 19: bookmark selection

5.2: “back” and “forward” buttons will change the selections of the KPI options selection.

5.3: “undo layout” and “redo layout” buttons will change the layout of the KPI options selection.

5.4: “lock all selections” and “unlock all selections” buttons allows you to lock the selections you’ve made on your KPI options selections. When the selections are locked the color of the options becomes blue (see figure 22 on the next page).

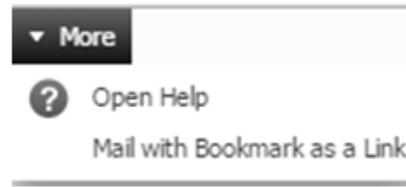
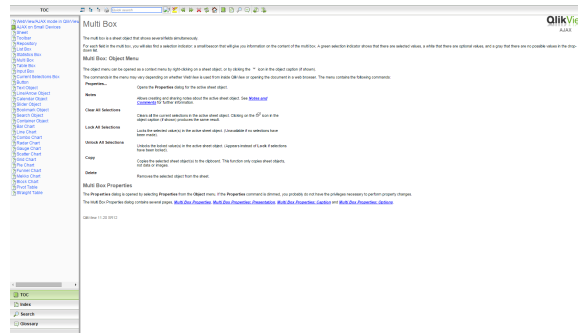


Figure 20 : more button



5.5: “add bookmark”, “remove bookmark” and “select bookmark” buttons allow you to create or remove a bookmark and to choose a bookmark you’ve already created (see figure 24). The bookmark saves the KPI options selection you had when you’ve created the bookmark.

Once you have selected the saved bookmark, the graphic display will be impacted by the KPI options selection of the selected bookmark.

5.6: “more” button

“open help” will as indicated open at the following QlikView help window

“Mail with Bookmark as a Link” will mail as indicated your dashboard with the bookmark as a link.

## 6. Create your dashboard

6.1: click on "My dashboard"

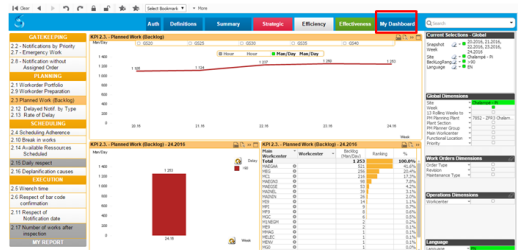


Figure 21 : My dashboard selection

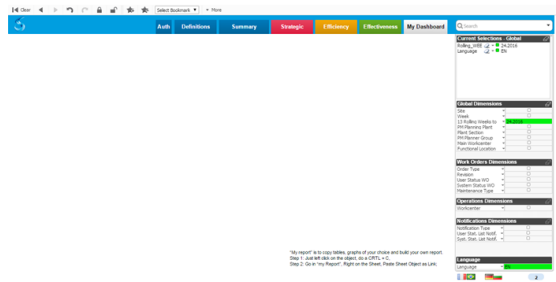


Figure 22 : "My dashboard"

6.2: your dashboard is displayed

Your dashboard is blank, you have to fill it with the KPI which are the most relevant for your.



Figure 23 : bar selection



Figure 24 : options on the selected bar

6.3: go back to the KPI which are interesting you.

6.4: select the bar (when selected, the bar goes from yellow to white as shown on figure 23)

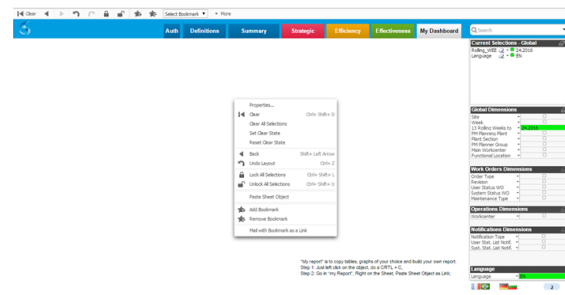


Figure 25 : pasting of a KPI window

NOTE : you can move the selected window by staying clicked on it and moving it as you do for a Windows window.

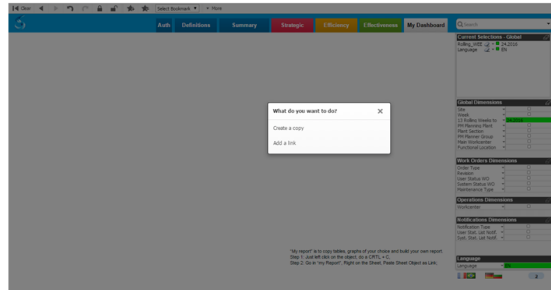


Figure 26 : Pasting options selection

6.5: right click on it to see the options

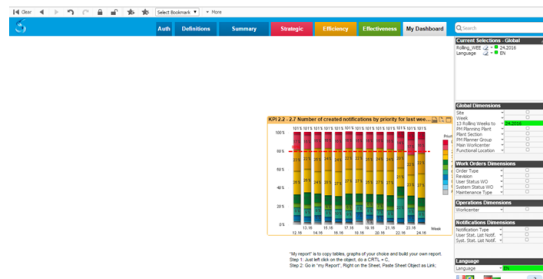


Figure 27 : pasted KPI window on "My dashboard"

6.6: click on "copy"

6.7: go back to "My dashboard"

6.8: right click on a blank space (out of an existing window if there are any)

- The first tools are a recap of the navigation bar on the top of the screen.
- The mail option allows you to send the current selection to a college with the bookmark as a link.

**6.9:** you only have to select "Paste Sheet Object" then QlikView will proposes you to "crate a copy" or to "add a link"

If you "create a copy", the KPI be displayed as a picture

If you "add a link", the KPI will be updated

**6.10:** select the option you want

**6.11:** the window is now on you dahsboard "My dashboard"



- **The KPI windows on your dashboard "My Dashboard" will display the data linked to the selections you've made from the "KPI options**

