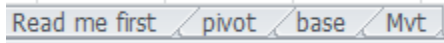


I fill the template IAC 03.07 PF2

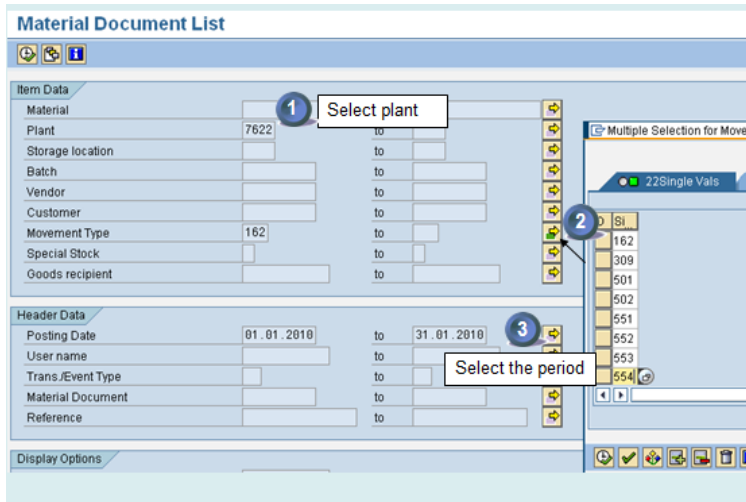
The file is composed by four tabs.

Only the tabs "base" and "pivot" have to be updated.



STEP 1

I open a SAP transaction MB51.




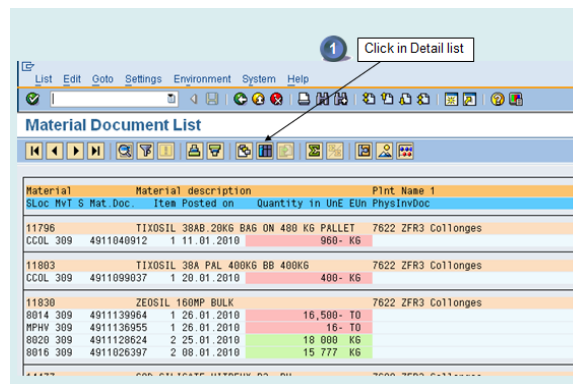
Fill in the:

1. Plant
2. Movement types copy from the IAC template
3. Period being controlled

STEP 2

1. Select the **detail list** by


clicking on 

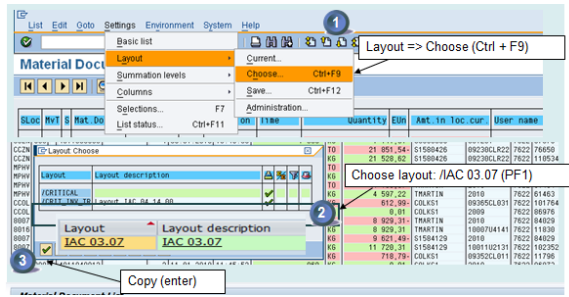


STEP 3

Being in the detail list

1. Select the correct layout
 - 1a. Settings
 - 1b. Layout
 - 1c. Choose

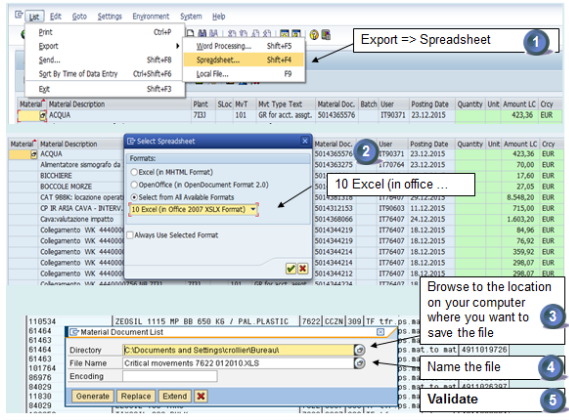
- Select the following layout:
/IAC 03.07
- Validate by clicking on 



STEP 4

Save to excel

- Go to
 - List
 - Export
 - Spreadsheet
- Select from all Available formats: 10Excel (in office 2007 xlsx format)
- Confirm the location of the extraction in your PC
- Name the file
- Validate



STEP 5

Copy data to IAC 03.07 to the template

Open the Excel template and copy paste in the "base" tab the data that you obtained in the SAP transaction as we have seen Step 4

A	B	C	H	I	J	K	L	M	N	O	P
1	Material: Material description	Fre	Plvstn.Doc	Batch	User name	Posting Date	Quantity	Unit	Amount	L.C	City
2	109440 ZECSL 1115 MP 20KG	7622		090106	S9000365	05.01.2010	-7.800	KG	-8.510	EUR	Declassed
3	57970 ZECSL 1115MP 25 KG BAGS ON 600 KG PAL	7622		090106	S9000365	05.01.2010	7.900	KG	5.707	EUR	Declassed
4	109440 ZECSL 1115 MP 20KG	7622		090106	S9000365	05.01.2010	-1.560	KG	-1.302	EUR	Declassed
5	57970 ZECSL 1115MP 25 KG BAGS ON 600 KG PAL	7622		090106	S9000365	05.01.2010	1.560	KG	1.141	EUR	Declassed
6	76920 ZECSL 1115MP 25 KG BAGS ON 600 KG PAL	7622		090106	S9000365	05.01.2010	-31.200	KG	-29.828	EUR	Declassed
7	110534 ZECSL 1115 MP RB 850 KG / PAL PLASTIC	7622		090106	S9000365	05.01.2010	31.200	KG	21.529	EUR	Declassed
8	61463 SALFURIC ACID 10% BLK	7622		2009	TRMARTIN	07.01.2010	272.644	KG	18.439	EUR	Declassed
9	61463 SALFURIC ACID 98% BLK	7622		2009	TRMARTIN	07.01.2010	272.644	KG	18.439	EUR	Declassed
10	61464 SALFURIC ACID 10% BLK	7622		2010	TRMARTIN	07.01.2010	47.976	KG	4.155	EUR	Declassed
11	61463 SALFURIC ACID 98% BLK	7622		2010	TRMARTIN	07.01.2010	67.976	KG	4.597	EUR	Declassed
12	101764 TIOCSL 73 888 800 KG / PAL	7622		090365	COLKES1	07.01.2010	-400	KG	-613	EUR	Declassed
13	86976 SILICA GRT 99,6% C BAGS 25KG PAL 9000G	7622		2009	COLKES1	07.01.2010	900	KG	0	EUR	Declassed
14	84029 ZECSL 165 VAC	7622		2010	TRMARTIN	08.01.2010	-15.777	KG	-8.929	EUR	Declassed

STEP 6

Refresh Pivot table

- Update the pivot table and comment if the amount is above 1 500 €
- Check if inventory discrepancies are only validated by the FRA

B	Type	A	B	C	D	E	F	G
9	Declassed		Mat.Doc	User name	Total	> 1500	Comments	
10			431903550	S9000365	284,45	ok		
11			431903594	S9004036	232,32	ok		
12			431903726	TRMARTIN	2.214,04	validate	Transfert acide sulfurique 98% vers 92%	
13			431903202	COLKES1	432,00	ok		
14			431903291	TRMARTIN	0,00	ok		
15			431903904	S9584129	2.098,82	validate	ZECSL et TIOCSL reclassement	
16			431904095	COLKES1	76,78	ok		
17			431905030	S9584129	1.722,27	validate	ZECSL et TIOCSL reclassement	
18			431905630	S9585026	363,14	validate	ZECSL vers SILICA	
19			431903208	TRMARTIN	-3,20	ok		
48	Inventory discrepancies		431907218	HEBELLOUT	15,38	ok		
49			431904100	HEBELLOUT	33,48	ok		
50			431905531	HEBELLOUT	159.774,4	validate	Ecarts d'inventaires sur le volume de 300T	