

3.03/ Number of WO per Equipment and/or Functionnal Location

1/ Definition

The number of WO per equipment or Functionnal Location allows to identify the Equipments taking most of the resources. When the database is big enough to be relevant, the equipment with the highest WO number should be analysed to see if they take a lot of resources. When this analysis has been made, Problem Solving Sessions (or other workshop) on the identified equipment could be done to increase the effectiveness and the reliability.

2/ Objective / Target

The goal of this indicator is to identify the equipment with the highest number of WO

3/ Formula

On a period of time, Number of WO created by Equipment or Functionnal Location

4/ Frequency

Monthly

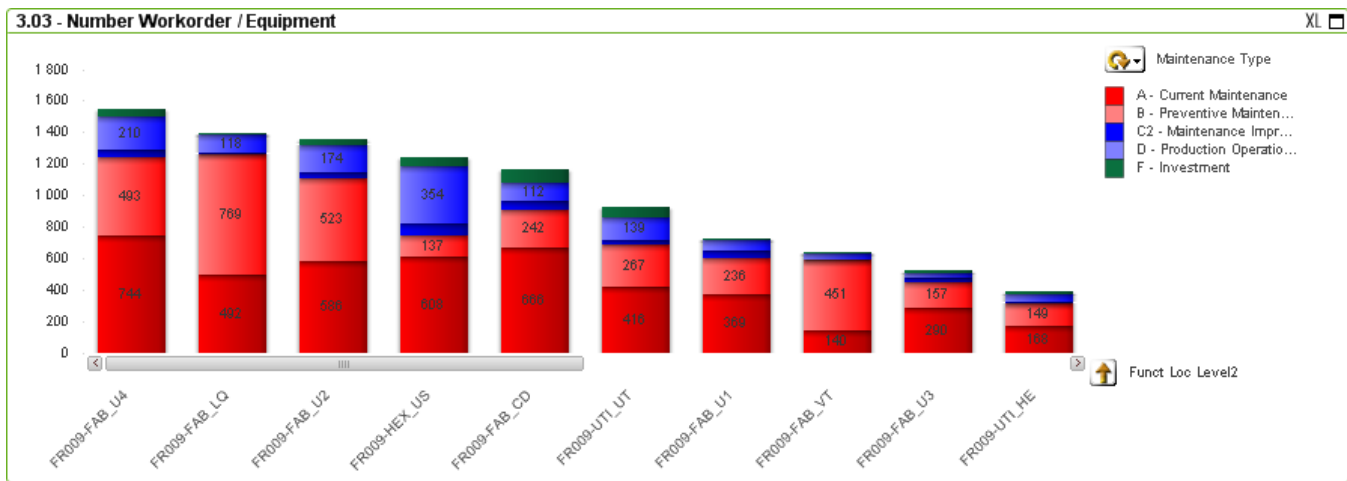
5/ QV Layout

A "drill down" fonctionnality allows to go deeper in the level of the hierarchy to display the figures.

Example: upper level of the hierarchy FR009 (= Level 1)



By clicking on "FR009", all the Level 2 are displayed



, then Level 3, etc.

