

IAC 01.02 - Report ZZM_MAT_VAL_COMP

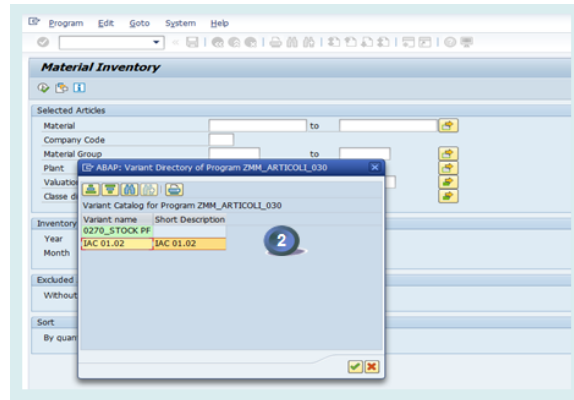
STEP 1

Start the transaction **ZZM_MAT_VAL_COMP** and select the layout

1. Select layout by clicking on

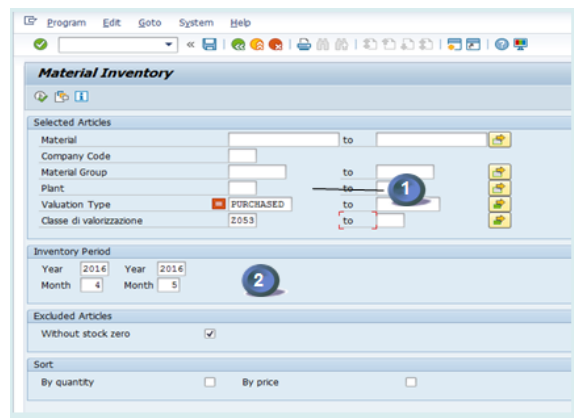


2. Click on **IAC 01.02**



STEP 2

1. Enter a plant or a list of plants
2. Enter the periods (N-1 and N)

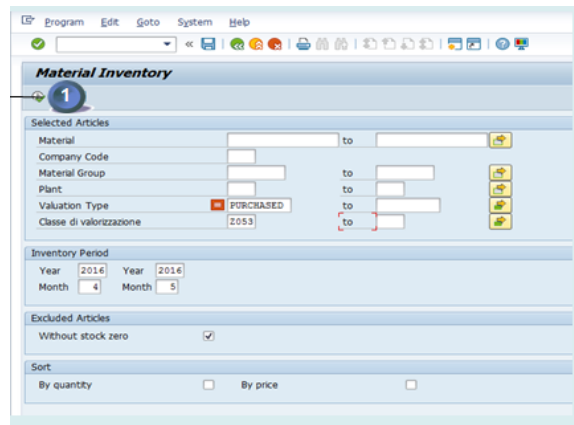


STEP 3

Execute



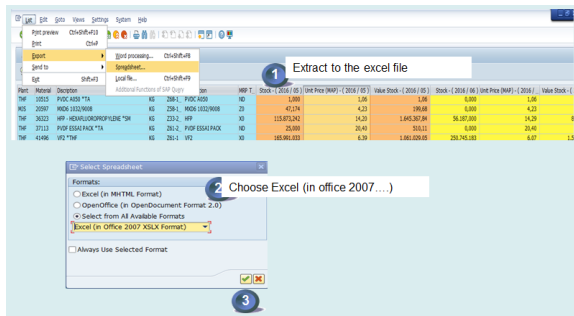
i It may result in a long run time.



STEP 4

Download the file to excel

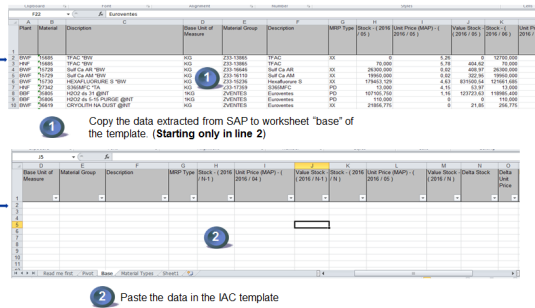
1. Extract the file through "export -> Spreadsheet"
2. Choose Excel (in office 2007...)
3. Execute



STEP 5

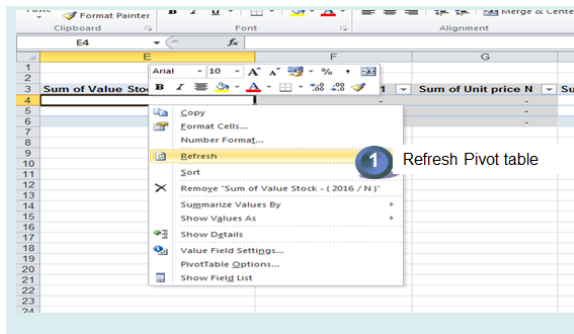
Update the template with the data retrieved in **STEP 4**

1. Open excel file created in **STEP 4** and copy all data starting **"line 2"**
2. Paste the data in the template of IAC 01.02 PF2



STEP 6

The Pivot table in the template is refreshed



STEP 7

Comment all the materials lines marked as **"To be validated"**

