
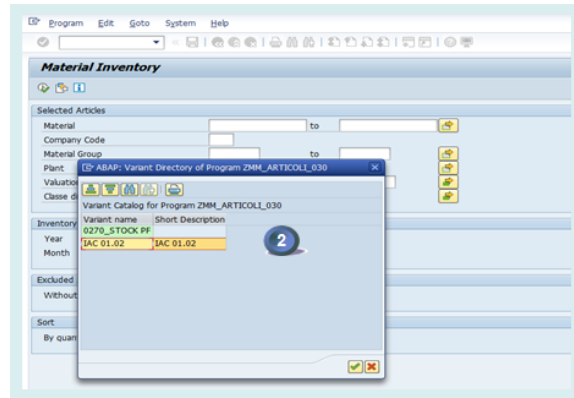


I fill the template IAC 01.02 PF2

STEP 1

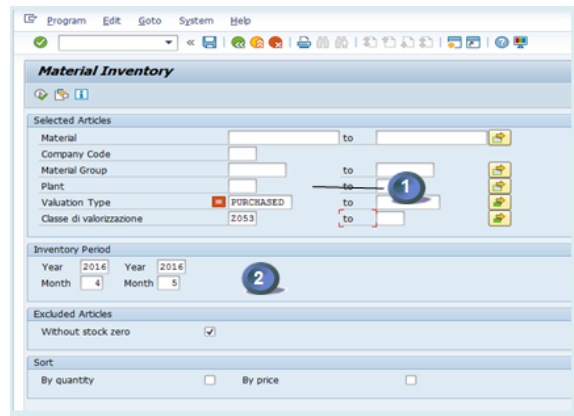
Start the transaction **ZZM_MAT_VAL_C OMP** and select the layout

1. Select layout by clicking on 
2. Click on **IAC 01.02**




STEP 2

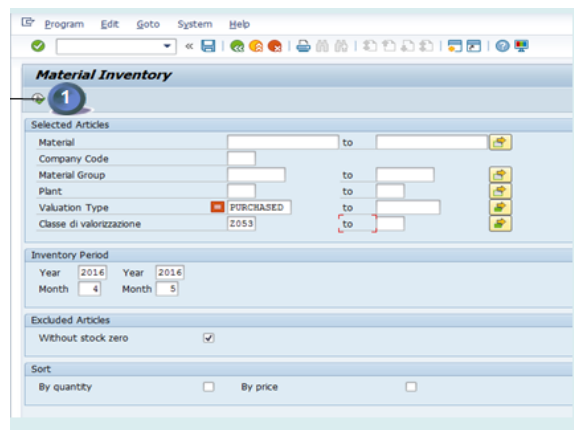
1. Enter a plant or a list of plants
2. Enter the periods (N-1 and N)



STEP 3


Execute 

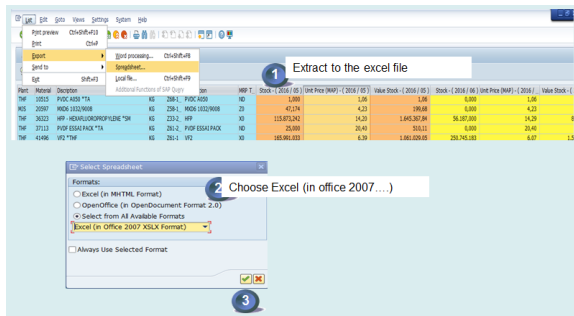
 It may result in a long run time.



STEP 4

Download the file to excel

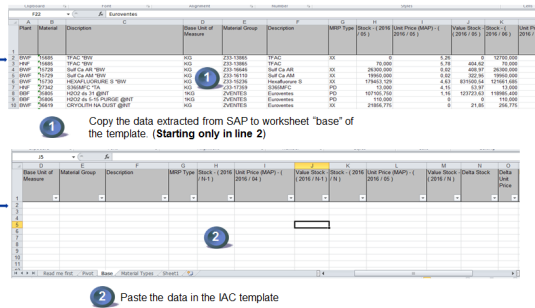
1. Extract the file through "export -> Spreadsheet"
2. Choose Excel (in office 2007...)
3. Execute 



STEP 5

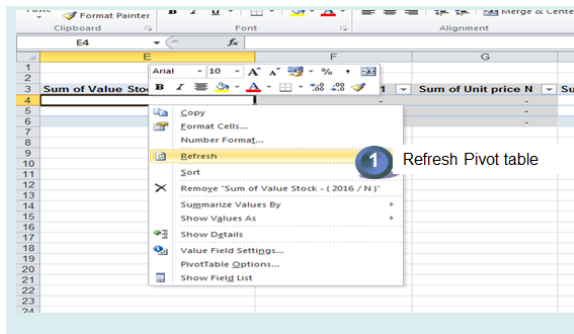
Update the template with the data retrieved in **STEP 4**

1. Open excel file created in **STEP 4** and copy all data starting **"line 2"**
2. Paste the data in the template of IAC 01.02 PF2



STEP 6

The Pivot table in the template is refreshed



STEP 7

Comment all the materials lines marked as **"To be validated"**

