

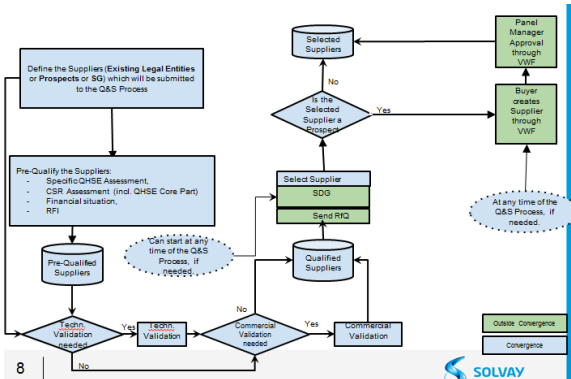
# A14 - Supplier qualification and selection

First steps in Convergence

## Added Value

Within Convergence, you can manage your supplier qualifications from the simplest case (a supplier qualified for one product for a specific site) to the most complex cases (a supplier qualified for several products, on several sites, etc.). You can also deal with Multi Zone Sourcing qualifications. All in one place.

Qualification and selection process map in Convergence:



## Table of Contents

- [A1400 - Master Keys](#)
- [A1410 - Pre-qualification documents \(RFI, CSR, fin. situation\)](#)
- [A1411 - New Account properties](#)
- [A1412 - MZS qualification](#)
- [A1413 - Qualification process \(advanced\)](#)
- [A1415 - Search for suppliers' qualifications with the Search Tool](#)

## What you need to know to start...

Qualifications in Convergence are represented by "Account properties". Each account property is defined for a given account and on 3 axis (the Master Keys) :

1. Geographical Axis : which zone, country or site ?
2. Organisational Axis : which GBU or business line ?
3. GPS Axis : which segment, material group or sub-material group ?

If you need to qualify several suppliers in one time, don't forget to use the Qualification process.

Last but not least, a bunch of reports can help you manage those account properties.

 Need Help?

## How to ask for assistance?

---

*Dear SalesForce  
Convergence user,*

For any question or issue regarding Convergence, please :

- create a request in **Service One** with the following information:
  - I want to update data in Convergence [Maintain data ownership in CONVERGENCE](#)
  - I want to upload procurement data [Maintain procurement data in CONVERGENCE](#)
  - Process : Data & Analysis
  - PTP-Subprocess: Purchasing Tools Support
  - PTP-Category: Convergence

For account creation, please refer to [here](#).

Thank you very much,

*Convergence Team.*