

I fill the template IAC 01.02 PF2

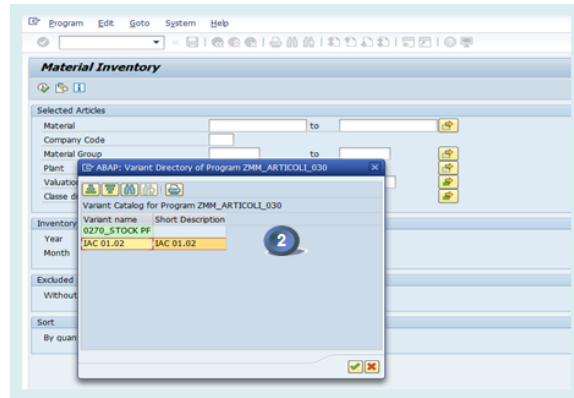
STEP 1

Start the transaction **ZZM_MAT_VAL_C OMP** and select the layout

1. Select layout by clicking on

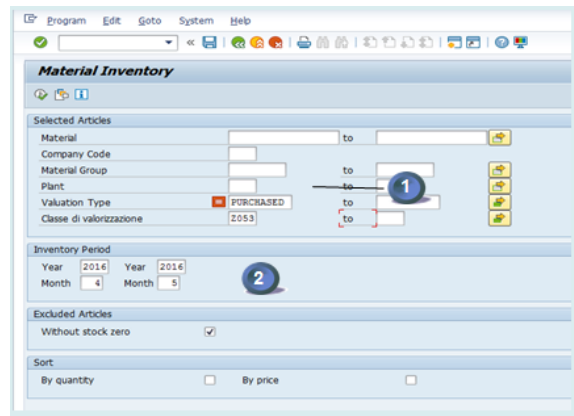


2. Click on **IAC 01.02**



STEP 2

1. Enter a plant or a list of plants
2. Enter the periods (N-1 and N)

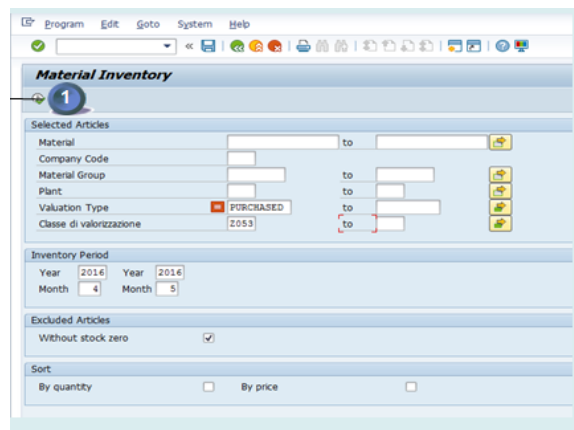


STEP 3

Execute



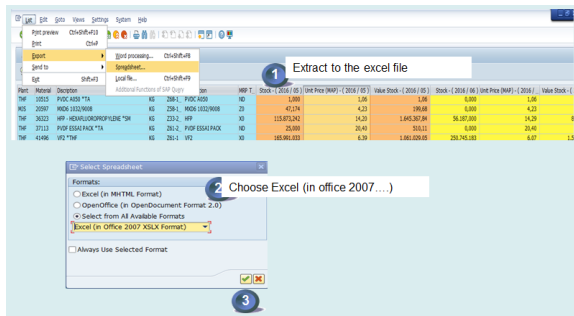
i It may result in a long run time.



STEP 4

Download the file to excel

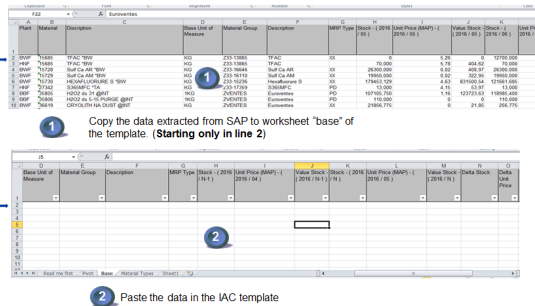
1. Extract the file through "export -> Spreadsheet"
2. Choose Excel (in office 2007...)
3. Execute



STEP 5

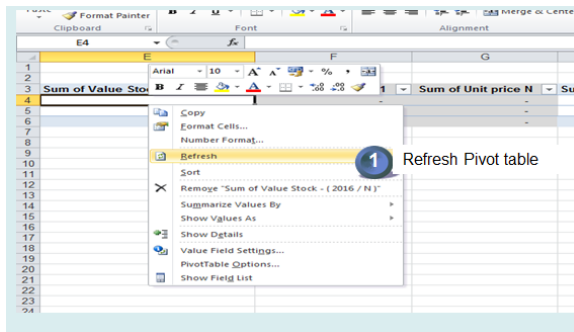
Update the template with the data retrieved in **STEP 4**

1. Open excel file created in **STEP 4** and copy all data starting **"line 2"**
2. Paste the data in the template of IAC 01.02 PF2



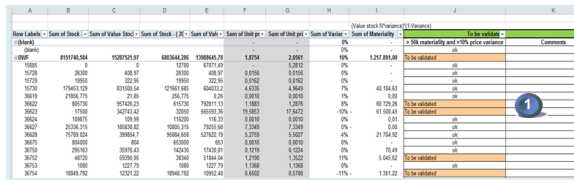
STEP 6

The Pivot table in the template is refreshed



STEP 7

Comment all the materials lines marked as **"To be validated"**



Workflow history

This view shows the 5 most recent entries. The complete workflow log is available from the 'Document Activity' menu item.

Nov 30, 2025	Actor	Type	Activity	Version
Published	TORNPETCH, Ubonrat	State	changed state to Published at 5:32 am	v9
Draft	TORNPETCH, Ubonrat	State	gave <i>Approvers</i> approval at 5:32 am	

Oct 08, 2025



WIROONSRI, Phattarapha

Edit updated the page at 5:02 am

State changed state to **Draft** at 3:02 am [v9](#)

Oct 12, 2016

Published

[Marielle MOINET](#)

Edit updated the page at 8:14 am

[Marielle MOINET](#)

State changed state to **Published** at 6:20 am [v8](#)
